



Cooperative Update

Julie Parsley, Chief Executive Officer

August 20, 2018

Board Meeting | Open Session

Welcome to the Marble Falls District Office!



Highlight – Marble Falls District



55

Employees

29,428

Accounts
(9.5% of total)

1,112

Square Miles
(13.7% of total)

4,500

Average Monthly Member
Contacts (2018)

1,110

In-office Member Contacts
(2018 Monthly Average)

1,220

Drive-thru Contacts
(2018 Monthly Average)

2,000

Phone Calls
(2018 Monthly Average)

492

Line Extensions in 2018
(4.5% of total)

Proposed Board Meeting Locations



August – Marble Falls

September – Kyle

October – Cedar Park/Rail Yard

November – Canyon Lake

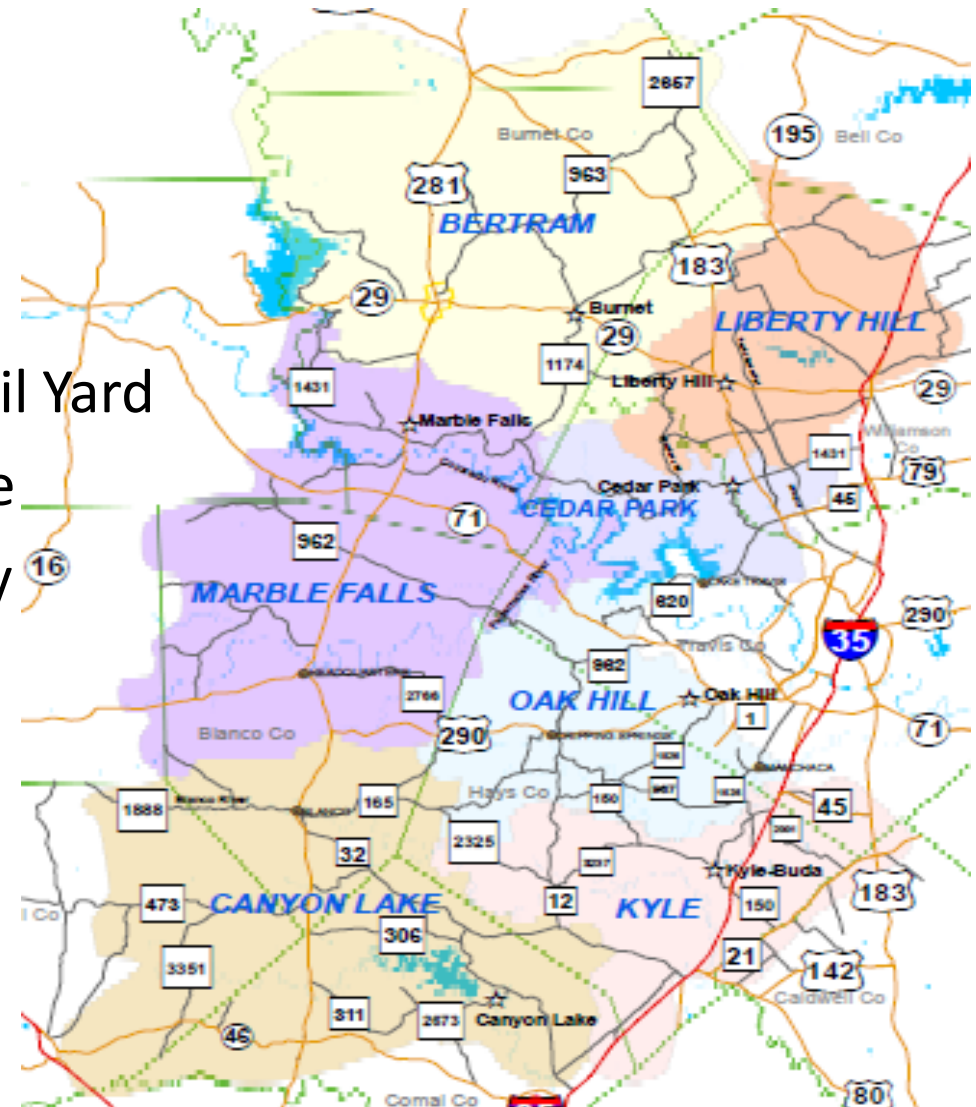
December – Johnson City

January – Bertram

February – Oak Hill

March – Liberty Hill

April – Junction



Visit From Congressman Roger Williams



TEC Annual Meeting



ERCOT – 2018 Peak Demand Set in July



ERCOT Peak 2017

- 69,629 MW on July 28, 2017
- 1,418 MW PEC coincident peak

ERCOT Peak 2018

- 73,259 MW on 07/19/18—3,630 MW higher than 2017
- 1,481 MW PEC coincident peak—only 63 MW higher

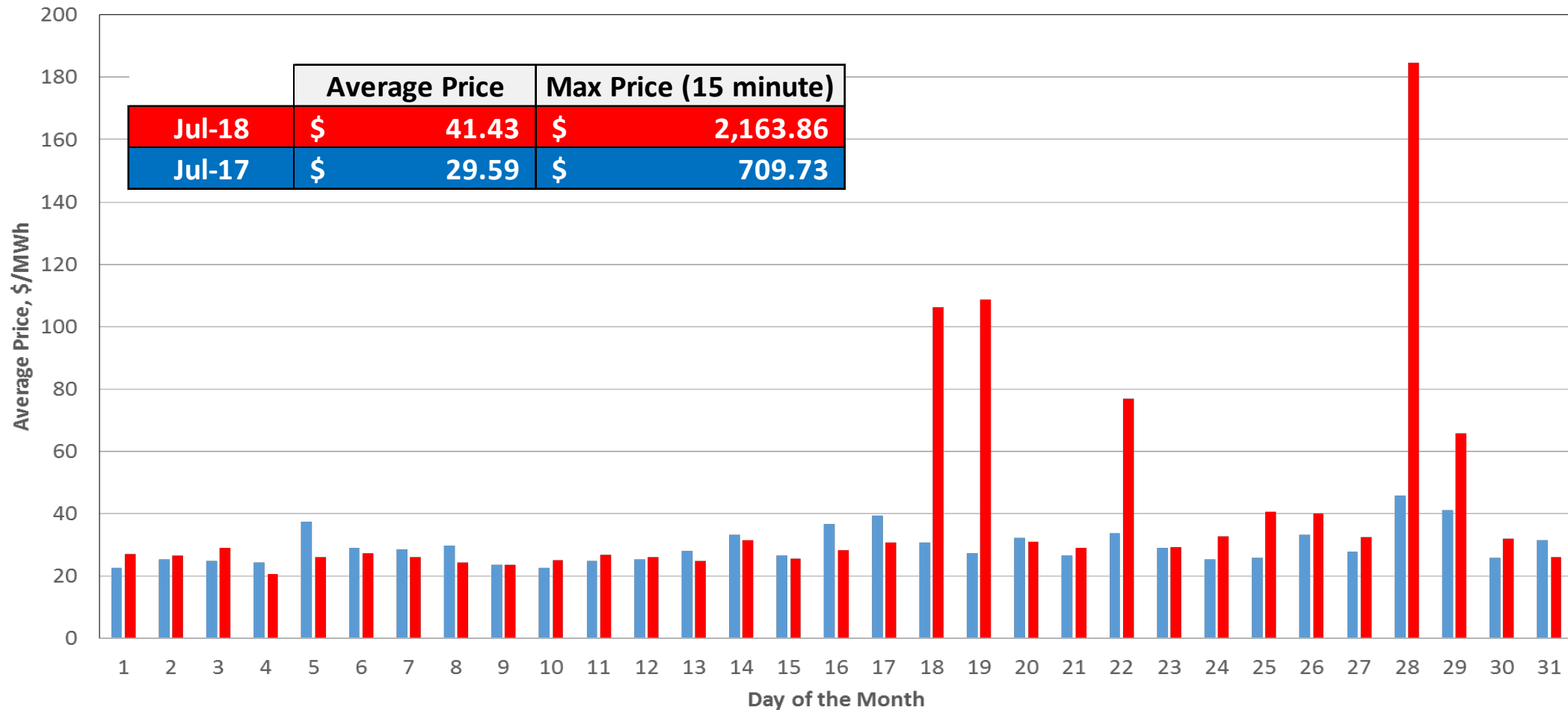
PEC Is a Winter Peaking System

- 1,730.5 MW PEC peak on January 17, 2018

ERCOT – Daily Average Prices in July

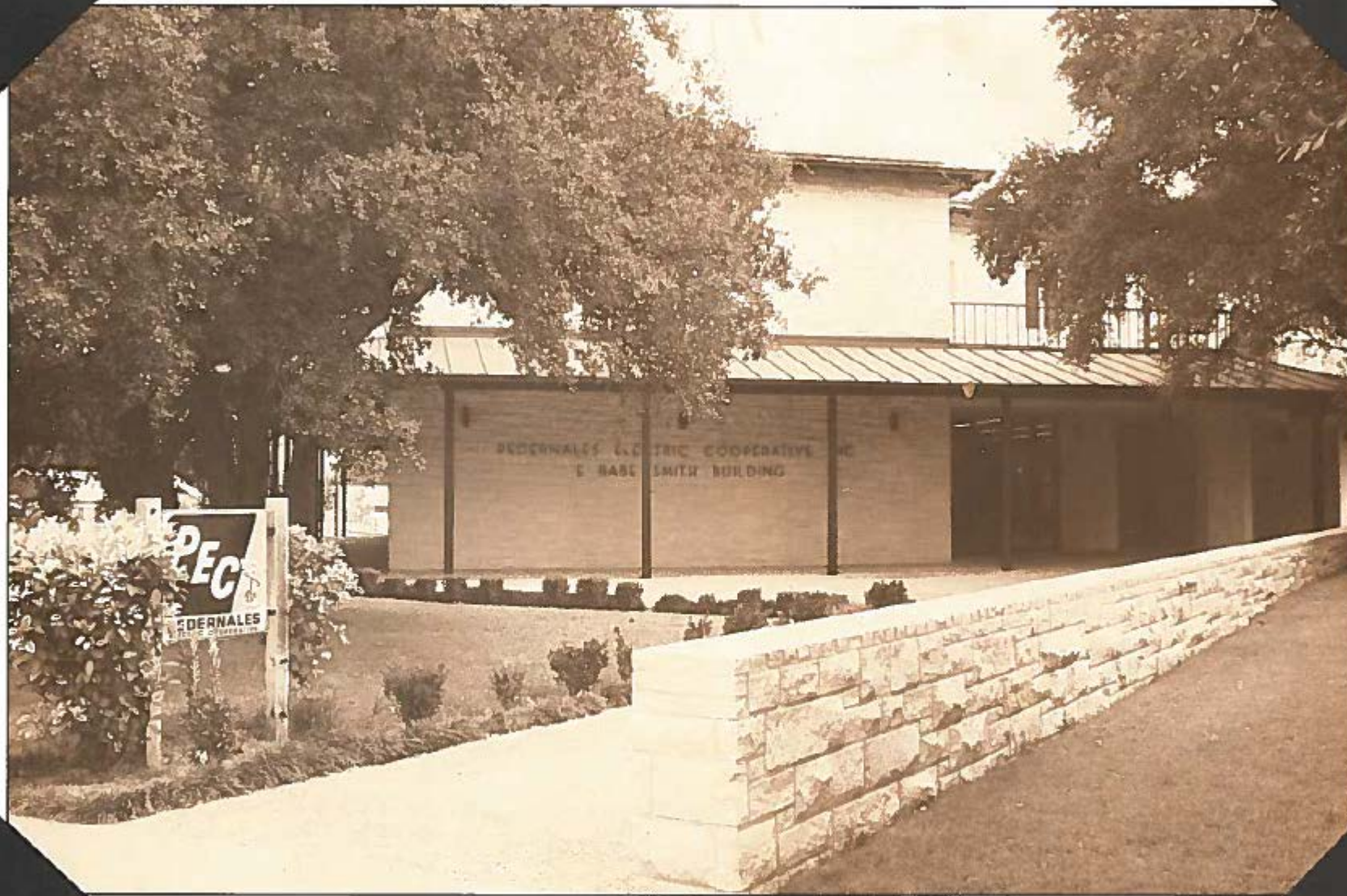


ERCOT Prices for July



Note: Prices shown use Real-Time LCRA Load Zone 15 minute prices

1988 CALENDAR

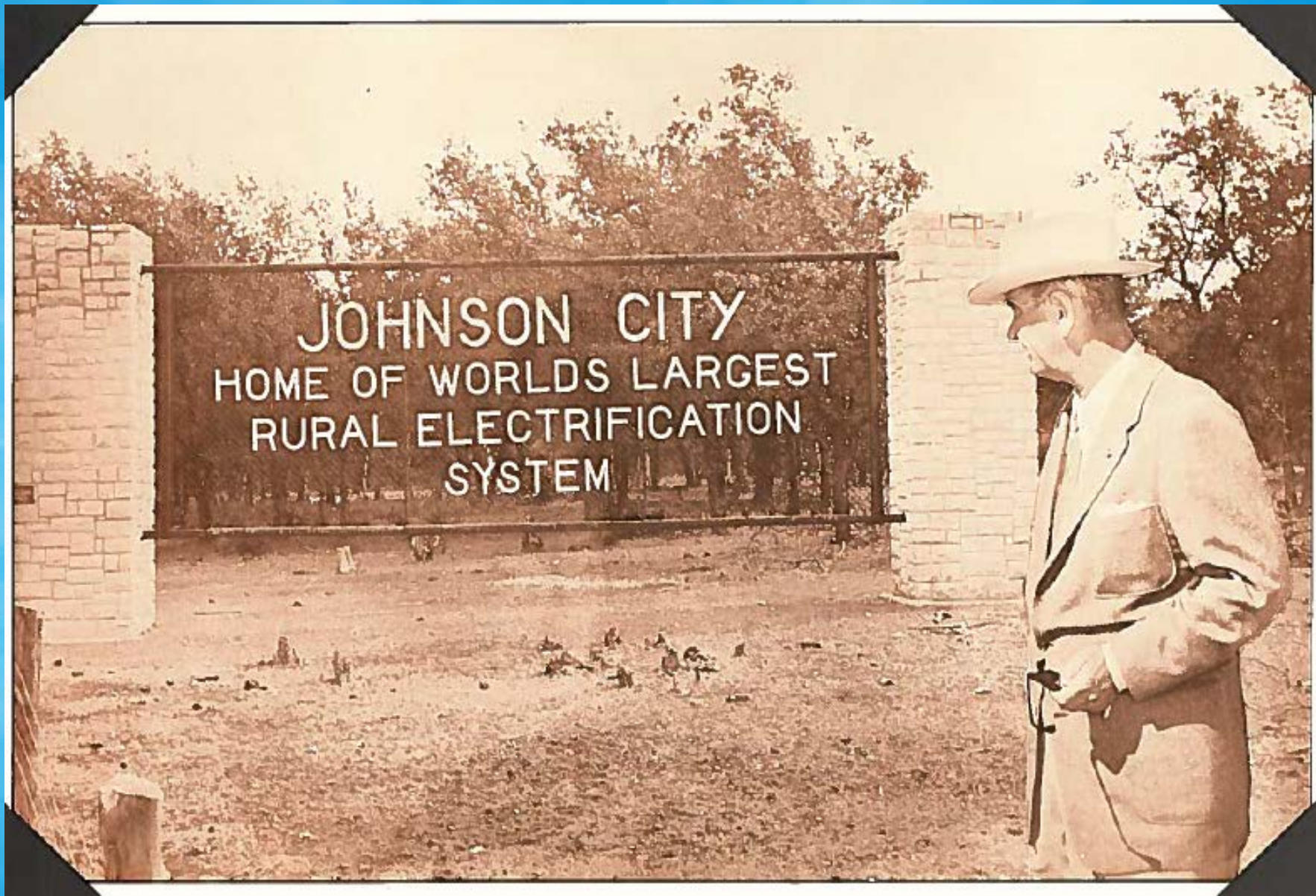


PEDERNALES ELECTRIC COOPERATIVE, INC.

Good Neighbors In Energy for 50 Years
1938-1988



PEC headquarters, built by the National Youth Administration, while under construction in 1939.



PEC was the world's largest cooperative in 1947.



The first rural community in the United States to have street illumination was Lago Vista on Lake Travis when the street lights were turned on in October, 1959.

PEC Offices

Johnson City
P.O. Box 467
78636-1467
868-4055

Headquarters
868-7155
Austin line
476-9815

Bertram
P.O. Box 449
78605-0449
355-2131

Canyon Lake
HC3 Box 27E
78133-4514
964-3346

Lake Travis
13301 Low Water Crossing Road
78732-1628
266-1313

Cedar Park
P.O. Box 2620
78613-2620
331-8883

Dripping Springs
P.O. Box 346
78620-0346
858-5611

Kyle-Buda
P.O. Box 100
78640-0100
268-2791

Marble Falls
P.O. Box 750
78654-0750
693-5525



LBJ as he leaves the PEC Headquarters in Johnson City after voting in a national election.



PROUD

