



Director District Revision and Member Balance

Daniel Gibson

Don Richards

Richards, Elder and Gibson, PLLC

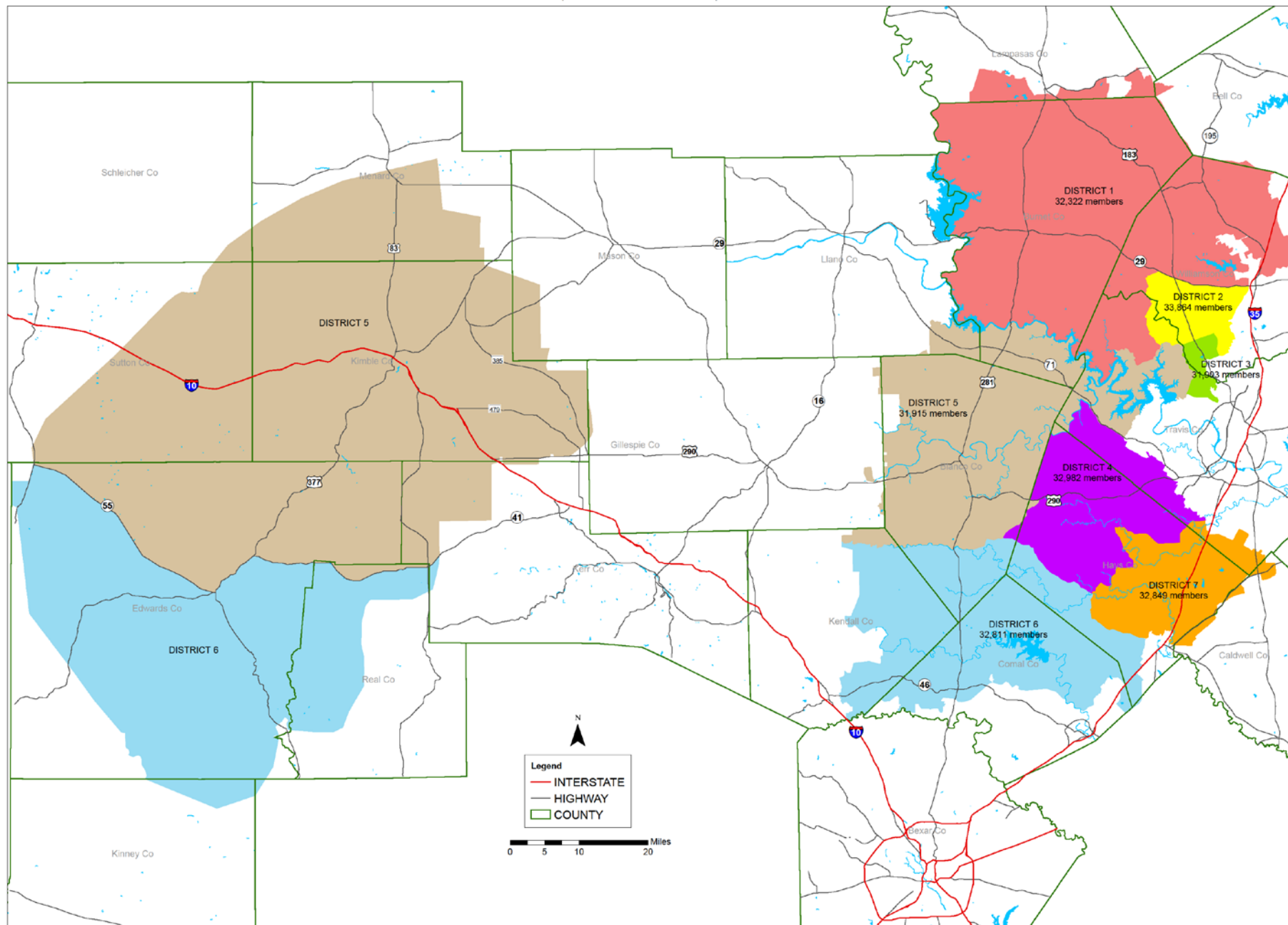
History

- Last revisions happened in 2015.
- Key consideration at that time was balancing members from an extreme variance. Ranged from 25% above to 29% below even distribution.
- Keep to a rivers and roads approach to the extent allowed.
- Keep within a 10% variance.

Results of Option Adopted by Board

Active Membership Count as of July 7, 2015 Option 1A Map				
Voting District	# of Members	Even Distribution of Members	Variance from Even Distribution	% Variance from Even Distribution
1	32,322	32,664	(342)	-1.05%
2	33,864	32,664	1,200	3.67%
3	31,903	32,664	(761)	-2.33%
4	32,982	32,664	318	0.97%
5	31,915	32,664	(749)	-2.29%
6	32,811	32,664	147	0.45%
7	32,849	32,664	185	0.57%
Unassigned				
	228,646			

Proposed Board District Revision Option 1A



HOW DID THE VARIANCE HOLD UP?

JUNE 1, 2018 Variance

Voting District	# of Members	Even Distribution Of Members	Variance from Even Distribution	% Variance from Even Distribution
1	34,937	36,077	(1140)	-3.16%
2	41,190	36,077	5113	+14.2%
3	33,047	36,077	(3030)	-8.4%
4	36,241	36,077	164	+.45%
5	34,009	36,077	(2068)	-5.73%
6	35,752	36,077	(325)	-.9%
7	37361	36,077	1284	+3.56%
	TOTAL			
	252,537			

Key Considerations for 2018 Rebalancing

- Move back within the 10% Variance (Range of 32,470 to 39,685)
- Maintain Integrity of Current Districts (small but impactful changes)
- Maintain rivers and roads approach where possible.
- Consider communities of interest that were split with 2015 sweeping changes or prior.
- Allow for growth in Districts lagging behind.

What did we have to work with?

- Atlas Maps
- PEC Maps showing meter distribution that could be taken down to nearly street level. Newly platted developments were included.
- Polygons overlaying Google Earth to allow use of landmarks and roads that might not appear on other maps.



Untitled Map

Write a description for your map.

Legend

- Absolute Water Solutions LC
- Angel's Icehouse
- DISTRICT 1
- DISTRICT 2
- DISTRICT 3
- DISTRICT 4
- DISTRICT 5
- DISTRICT 6
- DISTRICT 7
- Feature 1
- Feature 2
- Grace Outreach Family Church
- Hamilton Pool Nature Preserve
- Hill Country Auto Care Center
- Hillcrest Oaks House
- La Cabana Grill
- Lakeway Real Estate Agent
- Paleface Feed & Garden Supply
- Paleface Veterinary Clinic
- Poodies Hilltop Roadhouse

Hamilton Pool

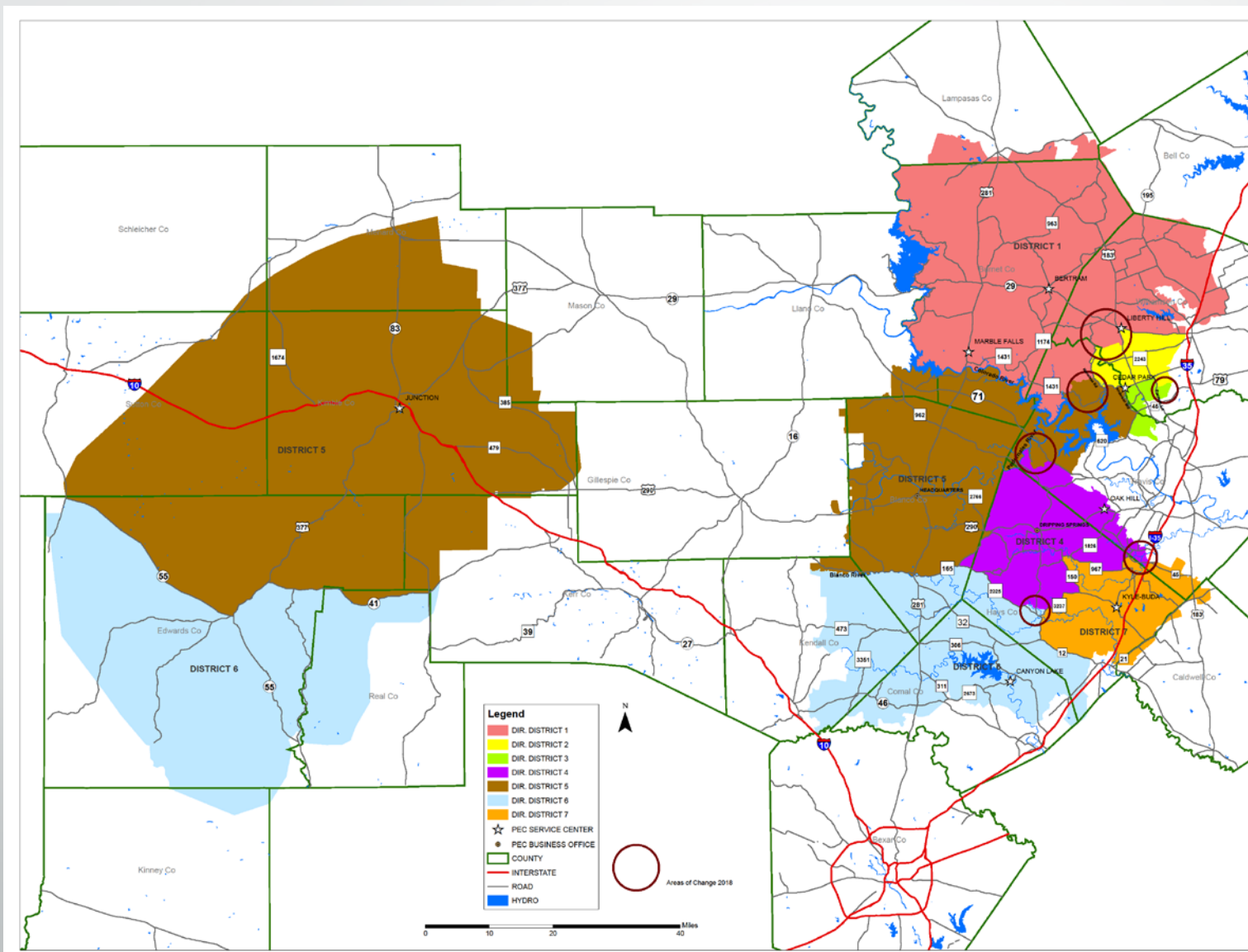
Google Earth

© 2018 Google

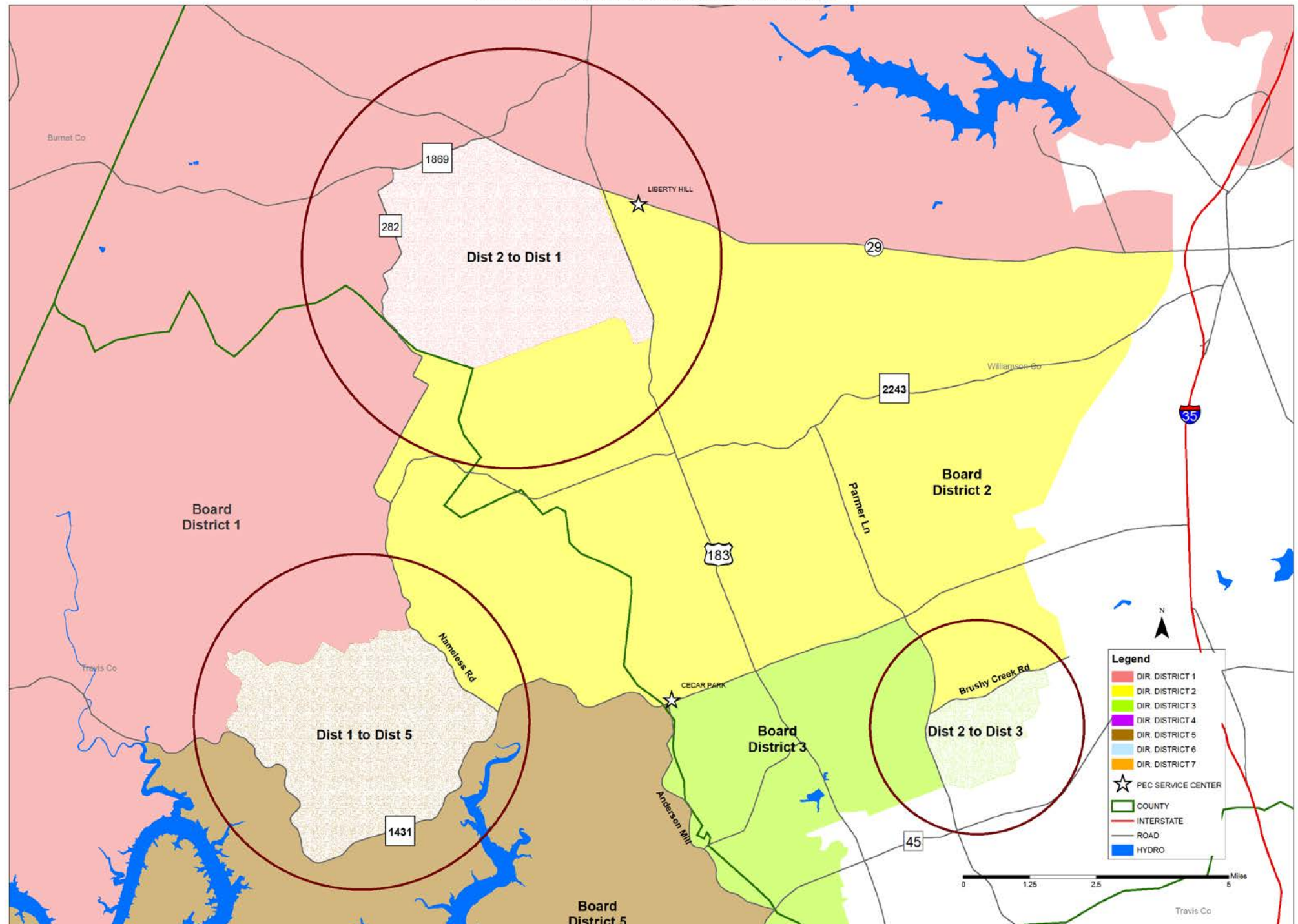
4000 ft

N

What Kind of Changes?

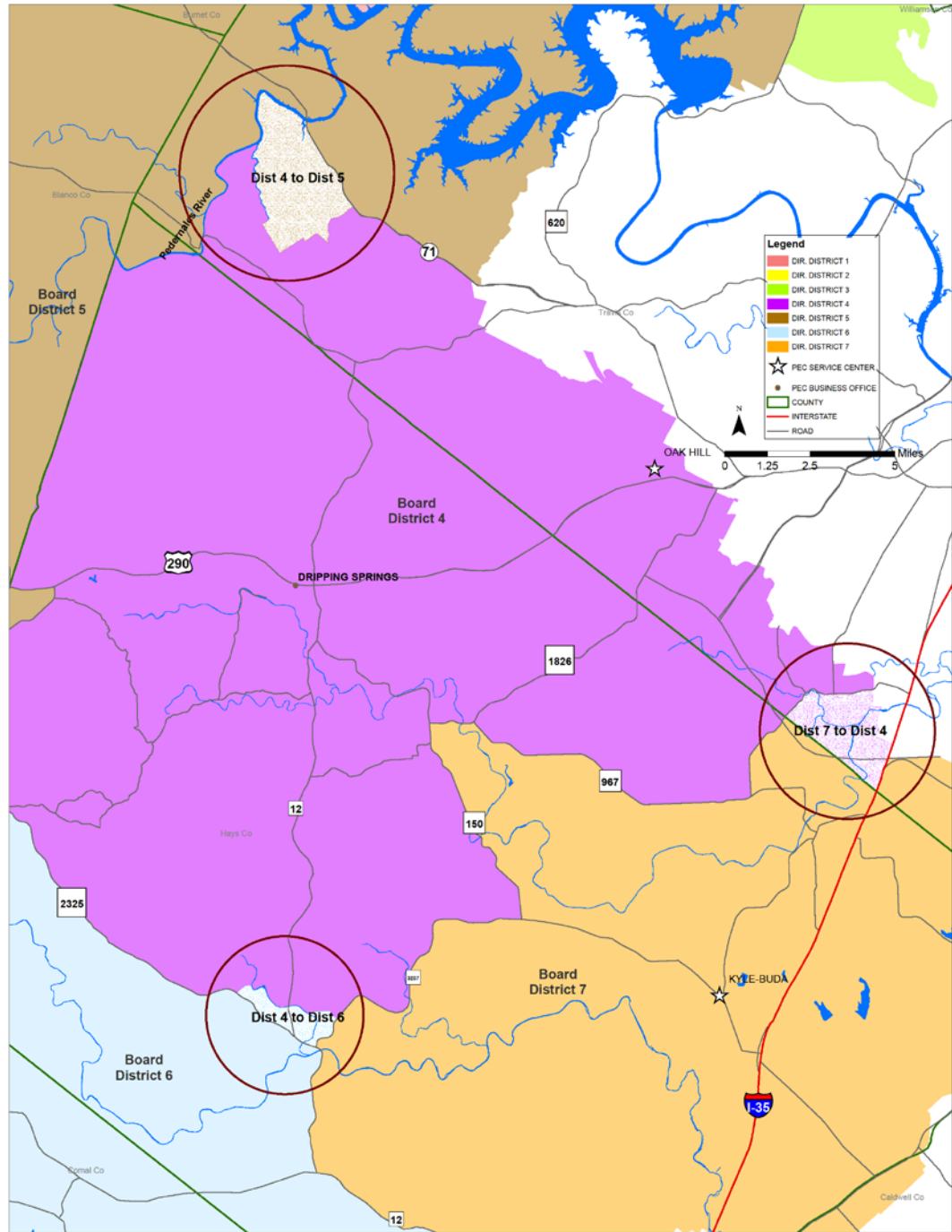


(Certain areas within the boundaries shown do not receive PEC electric service)



Director District Boundaries(with 2018 changes highlighted)

(Certain areas within the boundaries shown do not receive PEC electric service)



RESULTS OF PROPOSED CHANGES

JUNE 1, 2018 Variance

Voting District	# of Members	Even Distribution Of Members	Variance from Even Distribution	% Variance from Even Distribution
1	36,154	36,077	77	+.21%
2	35,737	36,077	(340)	-.94%
3	36,444	36,077	367	+1.01%
4	36,230	36,077	153	+.42%
5	35,556	36,077	(521)	-1.44%
6	36,262	36,077	185	+.51%
7	36,154	36,077	77	+.21%
	TOTAL			
	252,537			

COMPARISON

June 1 Variance from 36,077 Even Distribution

Voting District	Number of Members Before Adjustments	% Variance from 36077	Number of Members After Adjustments	% Variance from 36077
1	34,937	-3.16%	36,154	+.21%
2	41,190	+14.2%	35,737	-.94%
3	33,047	-8.4%	36,444	+1.01%
4	36,241	+.45%	36,230	+.42%
5	34,009	-5.73%	35,556	-1.44%
6	35,752	-.9%	36,262	+.51%
7	37361	+3.56%	36,154	+.21%

An abstract geometric design featuring a large, light blue triangle. Inside this triangle, there are several smaller, darker blue and grey shapes that create a sense of depth and perspective. The shapes are composed of parallel lines, giving them a three-dimensional appearance. The overall composition is clean and modern, with a focus on geometric forms and color contrast. The word "Questions?" is written in a bold, black, sans-serif font in the upper right quadrant of the image.

Questions?

