

# PEC Director Districts

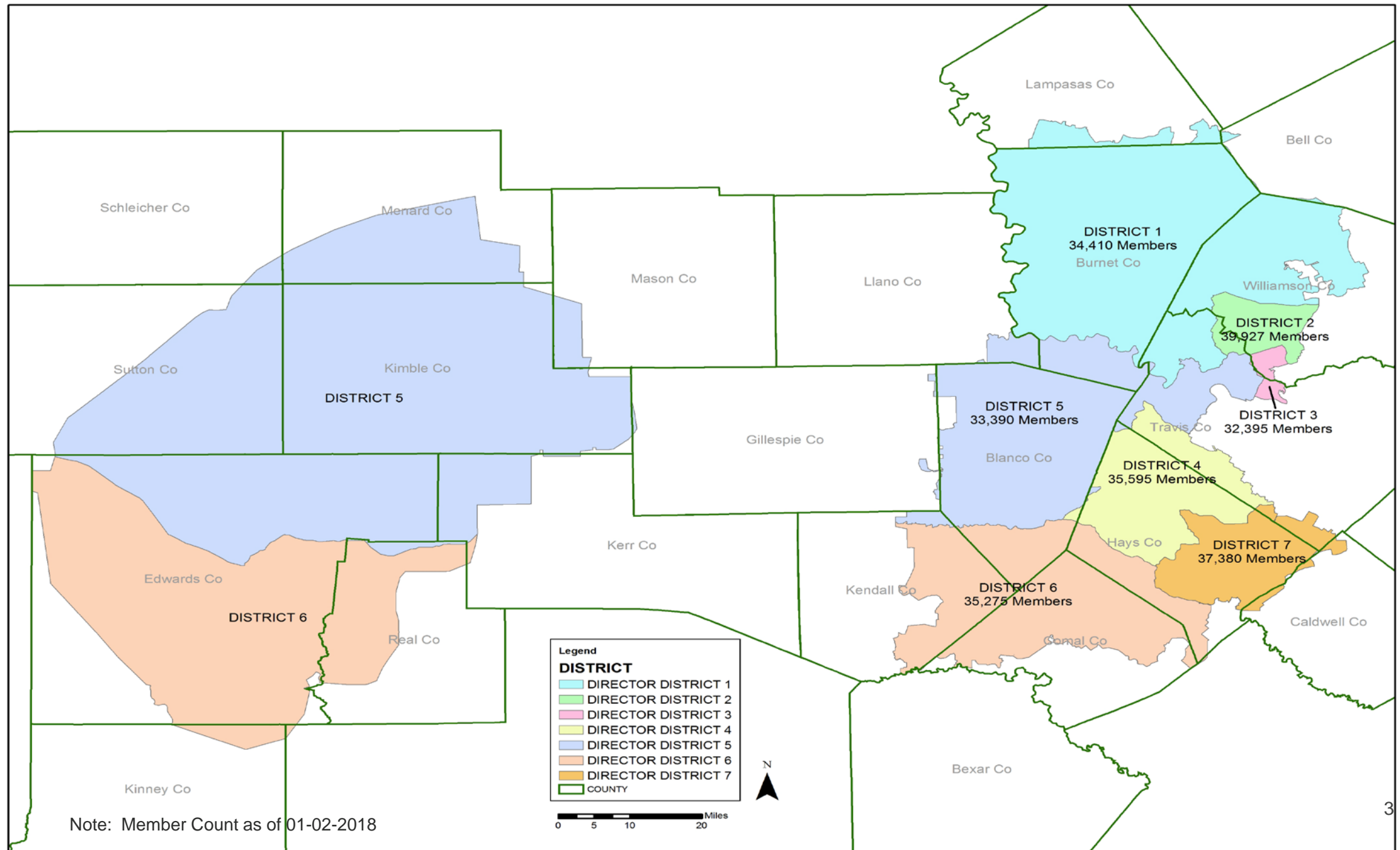
---

Board Meeting: January 16, 2018

# PEC Bylaws

## Article III, Section 1

- Requires seven (7) Director Districts which “equitally represent the Members.”
- The Board may revise Director Districts boundaries “based on equitable consideration determined by the Board; *i.e.*,
  - Number of Members
  - Investment
  - Geography, etc.



# **PEC Membership**

## **(January 2, 2018)**

**248,365**

**7 Districts = 35,481 average**

**10% variance acceptable  
under “1-man – 1-vote” legal standard**

**PEC Membership -248,365  
35,481 per district average**

**10% variance of average – 3,548**

**31,922 low  
39,029 high**

# PEC Current District Count

District	Membership	Off Average
1	34,410	-1,070
2	39,927	+4,446
3	32,395	-3,086
4	35,595	+114
5	33,390	-2,091
6	35,275	-206
7	37,380	+1,899
Average District - 35,481 10% - 3,548		