

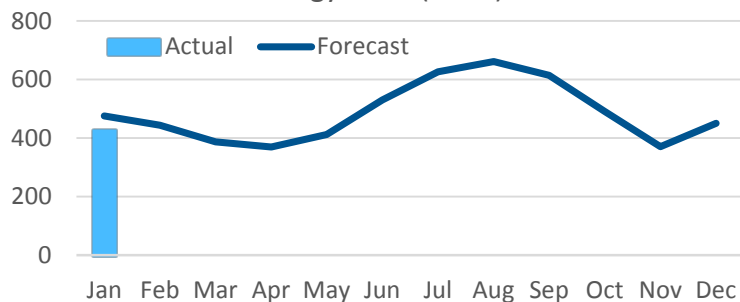


# Power Supply and Energy Services Report

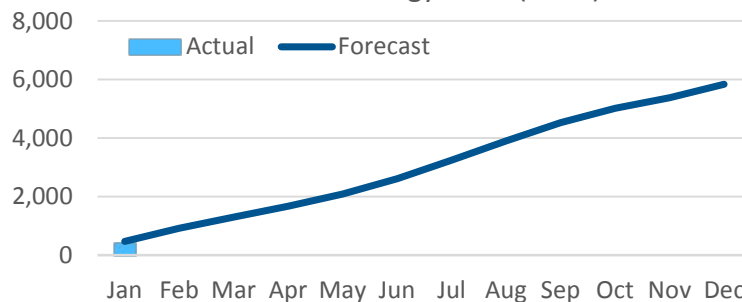
Ingmar Sterzing, VP, Power Supply and Energy Services

# PEC Energy Sales Summary for January 2017

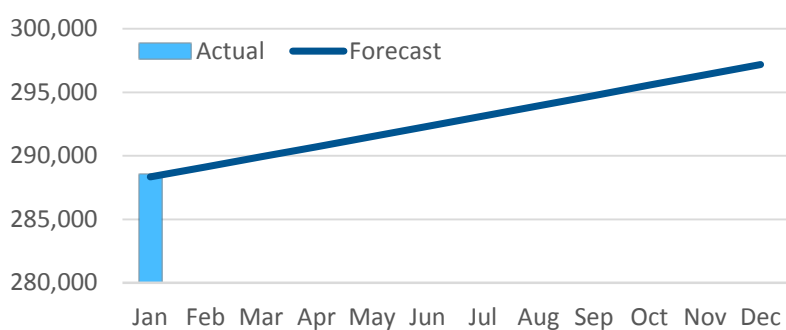
Energy Sales (GWh)



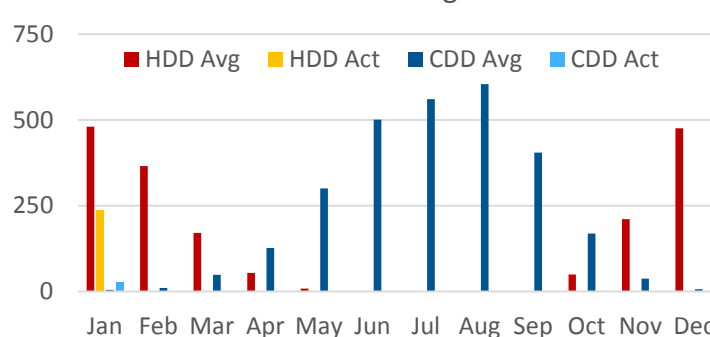
Cumulative Energy Sales (GWh)



Total Meter Count



HDD\* and CDD\* Average vs Actual



\* HDD- Heating Degree Days and CDD-Cooling Degree Days – An indication of the need for heating or cooling.



# Energy Services Update for January 2017

	2016	Jan	Feb	Mar	Apr	May	Jun	Jul	Aug	Sep	Oct	Nov	Dec	Total
Energy Audits Performed	281	21												
Interconnections Complete	354	26												
Residential Units Installed	1256	0												
Residential Rebates Monthly (\$k)	\$440	0												
Residential Rebate Budg. Remaining (\$k)	NA	500												
Comm. Rebate Applications Approved	18	0												
Comm. Rebates Monthly (\$k)	\$143	0												
Commercial Rebates Budg. Remaining (\$k)	NA	200												
Empower Loan Applications Received	29	0												
*Empower Loans Final Approval Monthly	10	2												

\* The Empower Loan Final approval is contingent upon approval of the interconnection and installation



# Rate Competitiveness - January 2017

	Jan	Feb	Mar	Apr	May	Jun	Jul	Aug	Sep	Oct	Nov	Dec
<b>PEC Residential Bill at 1,000 kWh Usage</b>	\$105.20											
<b>Texas Coop Average Bill at 1,000 kWh</b>	\$112.77											
<b>Texas Residential Average Bill at 1,000 kWh</b>	\$108.60											
<b>National Residential Average Bill at 1,000 kWh</b>	\$122.10											

# Residential Rate Option Participation – Jan 2017

	Jan	Feb	Mar	Apr	May	Jun	Jul	Aug	Sep	Oct	Nov	Dec
<b>Conventional</b>	174,683											
<b>ESaver</b>	19,130											
<b>EBilling</b>	50,990											
<b>EDraft</b>	27,424											
<b>Time of Use</b>	-											
<b>Renewable Rider</b>	352											
<b>Interconnection Net Metering</b>	1,292											
<b>Water Wells</b>	1,999											

# Project Status January 2017

Project or Initiative	Status
Time of Use (TOU) Rates	<ul style="list-style-type: none"> <li>Time of Use rate pilot has been initiated</li> <li>Time of Use calculator now available through PEC SmartHub</li> <li>Member communications under development</li> <li>TOU rate option go live planned for April 1, 2017</li> </ul>
Distributed Solar Project	<ul style="list-style-type: none"> <li>Preliminary construction planning has been completed</li> <li>Project execution is anticipated to start in April 2017</li> </ul>
Community Solar Program	<ul style="list-style-type: none"> <li>Technical and system requirements are under development</li> <li>Program policy under development</li> </ul>
Time of Use (TOU) for Interconnected Members	<ul style="list-style-type: none"> <li>Technical and system upgrades are in development</li> </ul>
Electric Vehicle (EV) Charging Pilot	<ul style="list-style-type: none"> <li>Vendor proposals have been received and are in evaluation</li> </ul>
Bring Your Own Thermostat (BYOT) Program	<ul style="list-style-type: none"> <li>Vendor proposals have been received and are in evaluation</li> </ul>
Economic Development Rider	<ul style="list-style-type: none"> <li>Final Tariff amendment proposed for the March 2017 PEC Board Mtg.</li> </ul>
Large and Small Power Interconnected Tariff	<ul style="list-style-type: none"> <li>Final Tariff amendment to be presented at the March 2017 PEC Board Mtg.</li> </ul>
Power Supply and Energy Management Initiative	<ul style="list-style-type: none"> <li>Draft policy prepared and awaiting responses from third party Energy Managers</li> </ul>



pec.coop