



Power Supply and Energy Services Report

Ingmar Sterzing, VP, Power Supply and Energy Services

May 15, 2017

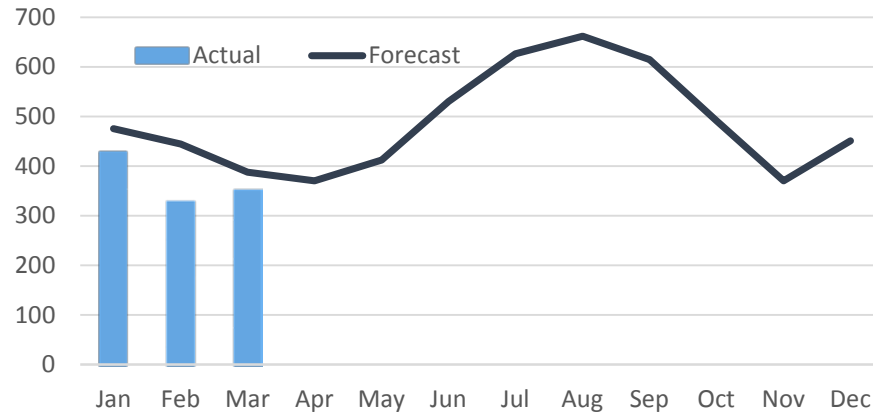
Electric Vehicle EV Charging

- Number of plug-in vehicles is increasing
- Potential benefits to Members and PEC
 - Member energy savings
 - Increased Load Factor, Distributed Energy Resource, and Demand Management
- Request for Information (RFI) complete January 2017
- Key components for a successful EV charging program
 - Proven network service and data analytics partner
 - Smart and connected charge station technology
 - Turn-key solution delivery options
 - Supporting rates and adoption incentives
- Implement and test pilot installations
- Consider adoption of an EV charging rate
- Consider home charging program offer that includes charging stations in empower loan program

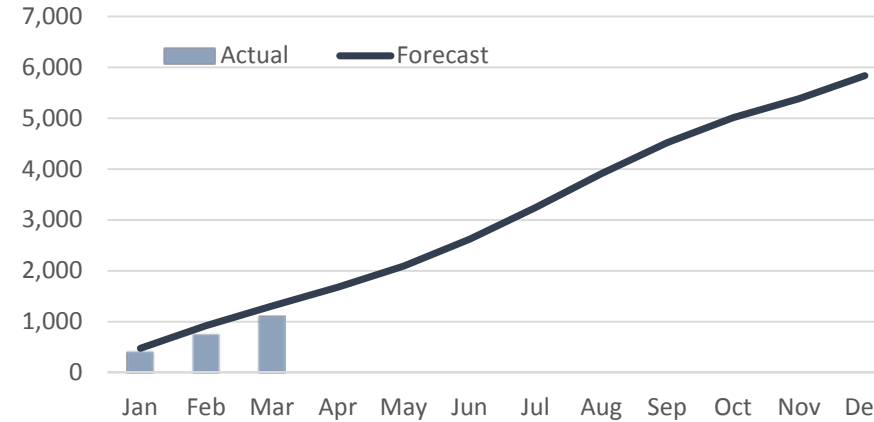


PEC Energy Sales Summary for March 2017

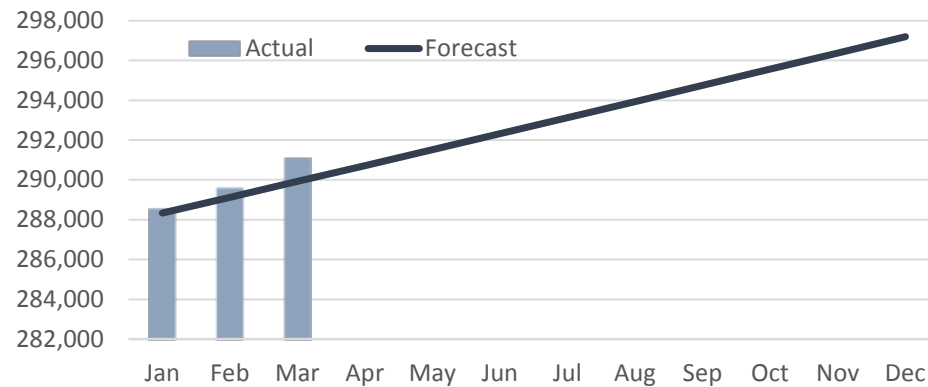
Energy Sales (GWh)



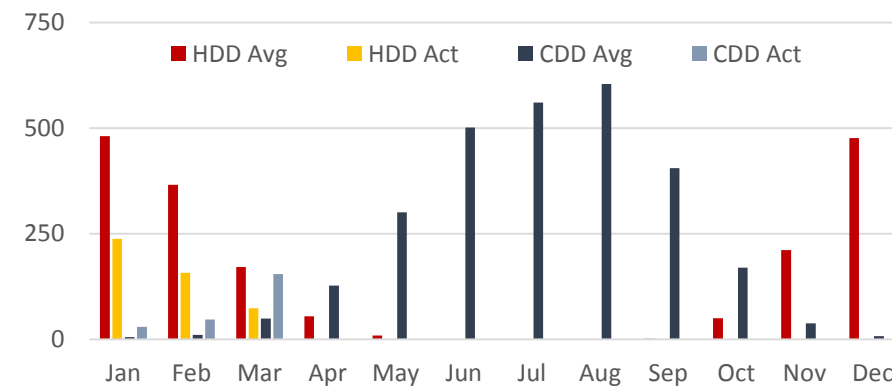
Cumulative Energy Sales (GWh)



Total Meter Count



HDD* and CDD* Average vs Actual



Energy Services Update for March 2017

	2016	Jan	Feb	Mar	Apr	May	Jun	Jul	Aug	Sep	Oct	Nov	Dec	Total
Energy Audits Performed	281	21	22	19										62
Interconnections Complete	354	26	27	34										87
Residential Units Installed	1256	0	128	80										208
Residential Rebates Monthly (\$k)	\$440	0	41	25										66
Residential Rebate Budget Remaining (\$k)	NA	300	259	234										234
Comm. Rebate Applications Approved	18	0	3	1										4
Comm. Rebates Monthly (\$k)	\$143	0	24	1										25
Commercial Rebates Budget Remaining (\$k)	NA	200	176	175										175
Empower Loan Applications Received	29	0	0	1										1
*Empower Loans Final Approval Monthly	10	2	0	0										2

* The Empower Loan Final approval is contingent upon approval of the interconnection and installation



Rate Competitiveness- As of Mar 2017

	Jan	Feb	Mar	Apr	May	Jun	Jul	Aug	Sep	Oct	Nov	Dec
PEC Residential Bill at 1,000 kWh Usage	\$105.20	\$105.20	\$105.20									
Texas Coop Average Bill at 1,000 kWh	\$112.77	\$110.50	\$110.50									
Texas Residential Average Bill at 1,000 kWh	\$108.60	\$108.82	\$114.10									
National Residential Average Bill at 1,000 kWh	\$122.10	\$122.10	\$128.20									

Residential Rate Option Participation – Mar 2017

	Jan	Feb	Mar	Apr	May	Jun	Jul	Aug	Sep	Oct	Nov	Dec
Conventional	174,683	165,993	167,237									
Esaver	19,130	18,799	18,919									
Ebilling	50,990	50,298	50,735									
Edraft	27,424	26,349	26,550									
Time of Use	-	21	24									
Renewable Rider	352	352	352									
Interconnection Net Metering	1,292	1,319	1355									
Water Wells	1,999	1,971	1967									

Project Status March 2017

Project or Initiative	Status
Time of Use (TOU) Rates	<ul style="list-style-type: none"> • Time of Use effective April 1, 2017 • Development of Large Power TOU calculator under way
Distributed Solar Project	<ul style="list-style-type: none"> • Power Purchase Agreements (PPAs) for 11 projects totaling 11 MWs have been completed • The remaining 4 projects totaling 4 MWs will be completed in May/June • Construction to start in May/June 2017
“Cooperative” Solar Rate Option	<ul style="list-style-type: none"> • Final Tariff Amendment to be presented to PEC Board in May 2017 • Tariff Effective date anticipated for Winter 2018
Electric Vehicle (EV) Charging Pilot	<ul style="list-style-type: none"> • Following completion of the Vendor Request for Information (RFI), PEC is working to establish preliminary agreements for networking, installation, and equipment partners • Initiating first pilot installations in conjunction with Johnson City HQ remodel project
Bring Your Own Thermostat (BYOT) Program	<ul style="list-style-type: none"> • Vendor proposals have been received and are in evaluation • Project is proposing a limited scope pilot test to complete during Summer of 2017
Empower Loan Program	<ul style="list-style-type: none"> • Revise loan guidelines to adjust requirement for 12 Mo. Billing history and add car charging stations as a covered loan item
Large and Small Power Interconnected Tariff	<ul style="list-style-type: none"> • Tariff amendment approved and will be effective July 1, 2017
Power Supply and Energy Management Initiative	<ul style="list-style-type: none"> • Draft policy prepared and awaiting responses from third party Energy Managers
Time of Use (TOU) for Interconnected Members	<ul style="list-style-type: none"> • Technical and system upgrades are in development
TCEQ Battery Storage Project	<ul style="list-style-type: none"> • Preliminary project planning continues
Microgrid Marble Falls Operations Center Project	<ul style="list-style-type: none"> • Executive meeting with Advanced Microgrid Systems (AMS) complete, • Engineering discussion ongoing, final one lines on microgrid configuration underway



pec.coop