



Information Technology

Lawanda Parnell, Chief Information Officer

July 17, 2017



iVUE 2.38/2.39 Upgrade Schedule

July 7th – July 16th	Test system down for upgrade preparation and refreshes
July 18th – Aug 4th	Testing (Round 1)
Aug 7th – Aug 8th	Defect Fixes
Aug 9th – Aug 23rd	Testing (Round 2)
Aug 26th - Aug 27th	GoLive

iVUE 2.38/2.39 Highlights

Accounting & Business	Customer Care & Billing
<ul style="list-style-type: none"> Simplified vendor payment processes with Single Vendor Payment functionality Improved Purchasing workflow and efficiencies Corrections to Procurement processes Ability to process vendor payments electronically through e-payments Ability to close PO's with multiple lines Ability to reopen a PO after reopening the Work Order Ability to release agreement dollars based on final receipt 	<ul style="list-style-type: none"> New messages warns of Account Conflicts when merging accounts New functionality that determines eligibility for bad debt write-off accounts Modifications to No Future Connections functionality, preventing connection a locations as required
<ul style="list-style-type: none"> Ability to close work and start capturing depreciation without waiting for overheads Capture work order allocations 	<ul style="list-style-type: none"> New field displaying last refund amount for accounts New field added to provide additional methods for calculating tax
<ul style="list-style-type: none"> New reporting tools for CIP Budget and Payroll processes Corrections to Month End Close processes Ability to create a project for a zero dollar amount 	<ul style="list-style-type: none"> More efficient Month End Reconciliation reporting process New option to assist with month end close and GL journal entries reconciliation processes
<ul style="list-style-type: none"> Improved invoicing and payment processes to combined payroll deductions, benefits and taxes Ability to pull OT hours from PL Option to select GL account when they default from PL on employee tab Ability to reallocate distribution by time Allow entry of an invoice before received 	<ul style="list-style-type: none"> Custom discount certification retirement process



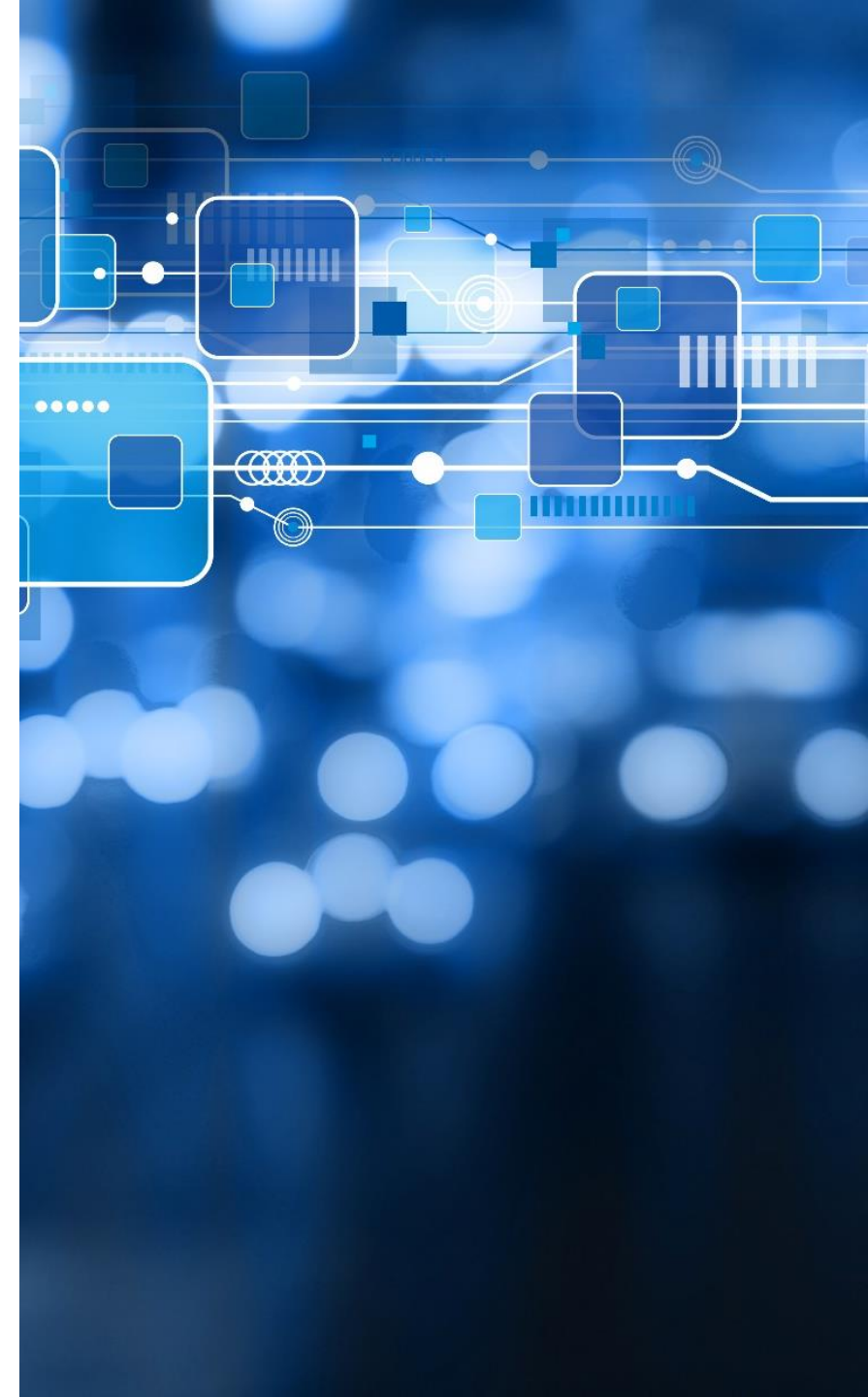


iVUE 2.38/2.39 Highlights

Meter Data Management	SmartHub & Messenger
<ul style="list-style-type: none">• Corrected access to VEE Editor in MDM Analytics	<ul style="list-style-type: none">• MR payments through SmartHub & PayNow
Document Vault	SmartTrack
<ul style="list-style-type: none">• Ability to use multiple screens within Document Vault	<ul style="list-style-type: none">• New Messaging for Peer to Peer; which is a more reliable method of communication between CC&B and SmartTrack.
<ul style="list-style-type: none">• Ability to rotate pages• Ability to set reminders• Ability to open video and audio files directly in Vault• Ability to set default search and insert attributes	<ul style="list-style-type: none">• Enhanced ordering of tasks on the calendar within SmartTrack
<ul style="list-style-type: none">• Changes to Vault Administrator	

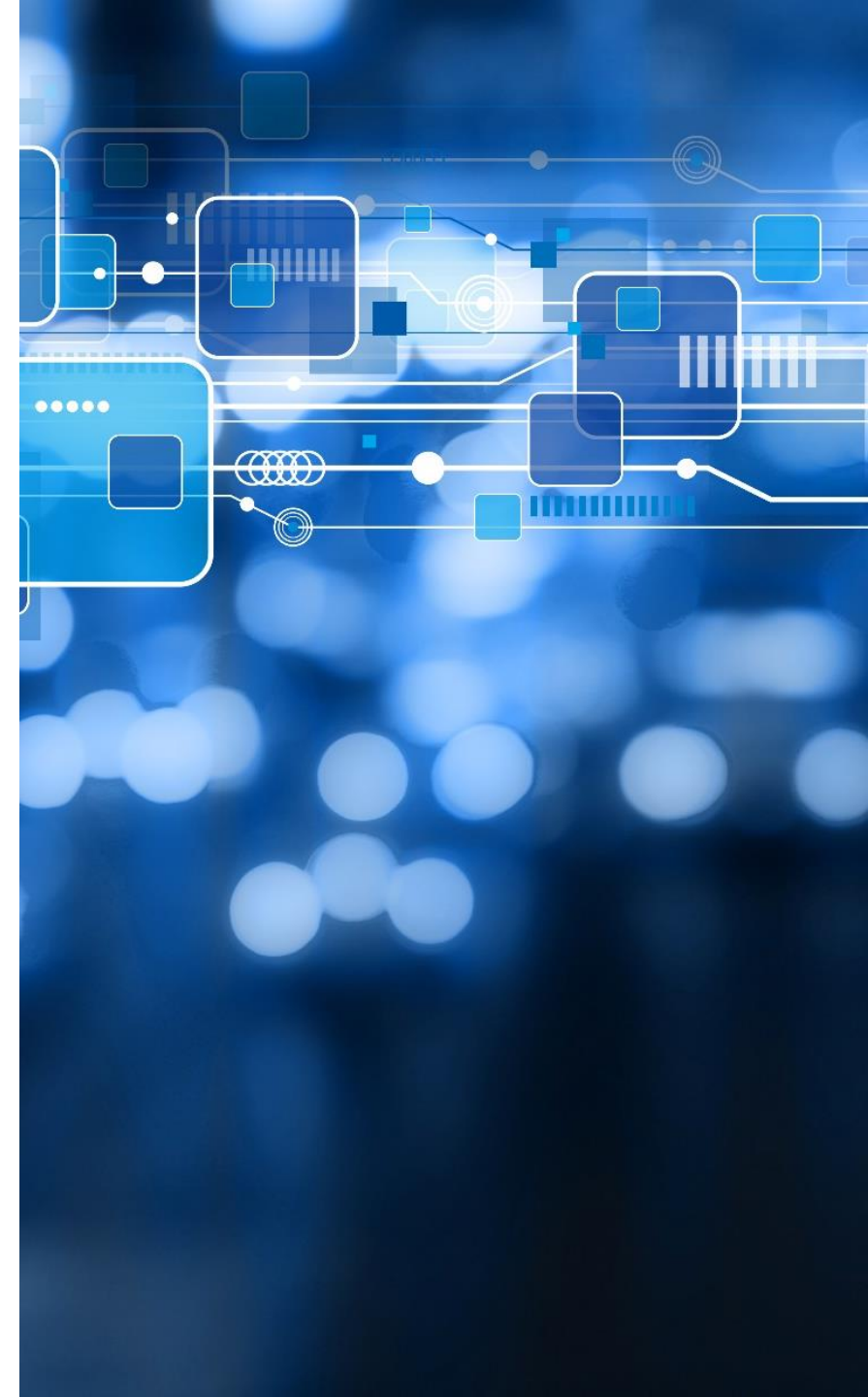
Agile Methodology Update

- Agile methodology deployed in the IT Applications group
- Team moved from one month sprints (development cycle) to a two week sprint schedule.
- Team is working “Epics” (large development requests) that are broken into efficient work efforts.
- Epics are delivered over several sprints. This provides critical new functionality faster, and builds foundational elements first.
- Epic example: OPEX (Operating) Budget Reports. Work was completed over the last 3 sprints. This epic was broken down to 5 sprints.



Delivered/Current IT Initiatives via Agile

May 15 th	May 30 th	June 19 th
Develop OPEX (Operating) budget reports – Data Preparation	CIS data pull for billing refunds	Fix Conflict of Interest Form Error
Update FMLA supplemental file for Benefit Solver	3DI Transformer Simulator - upload and access for lineman	Enhancement to Bill Restore Program
Bill Restore Program - Remove Restored Bills from Current Folder	Daily Misc. Validations Report - Large Interconnections	Develop OPEX (Operating) budget report – Build Dashboard
Develop Smart Track functionality for Pole Contacts, PTT, Central CIP	Develop OPEX (operating) budget reports – Data Modeling	Update KPI Qlik Dashboard – Update Dashboard
Update Output Options on Project Total Report	Update KPI Qlik Dashboard - Data Preparation	Develop SmartTrack functionality for Pole Contacts, PTT, Central CIP - Create perspectives
Reliability Data - Defining calculations and creating dashboards portion	Create Department SharePoint Page for Strategy & Research	





pec.coop