



Cooperative Update

Julie C. Parsley | Chief Executive Officer

Andrea Stover | General Counsel

Nathan Fulmer | Chief Operations Officer | Distribution

Randy Kruger | Chief Financial Officer

JP Urban | Chief Administrative Officer



CEO Report

Julie C. Parsley | Chief Executive Officer

Legislative Update

- House Passes State Budget (SB 1)
 - \$337 billion, two-year budget
 - \$2 billion for the Texas Energy Fund
 - Conference committee to settle differences
 - Approximately 322 amendments considered
- After Easter break, legislative action to increase
 - Deadline for bills to be engrossed from originating chamber: May 15
- June 2: Sine Die



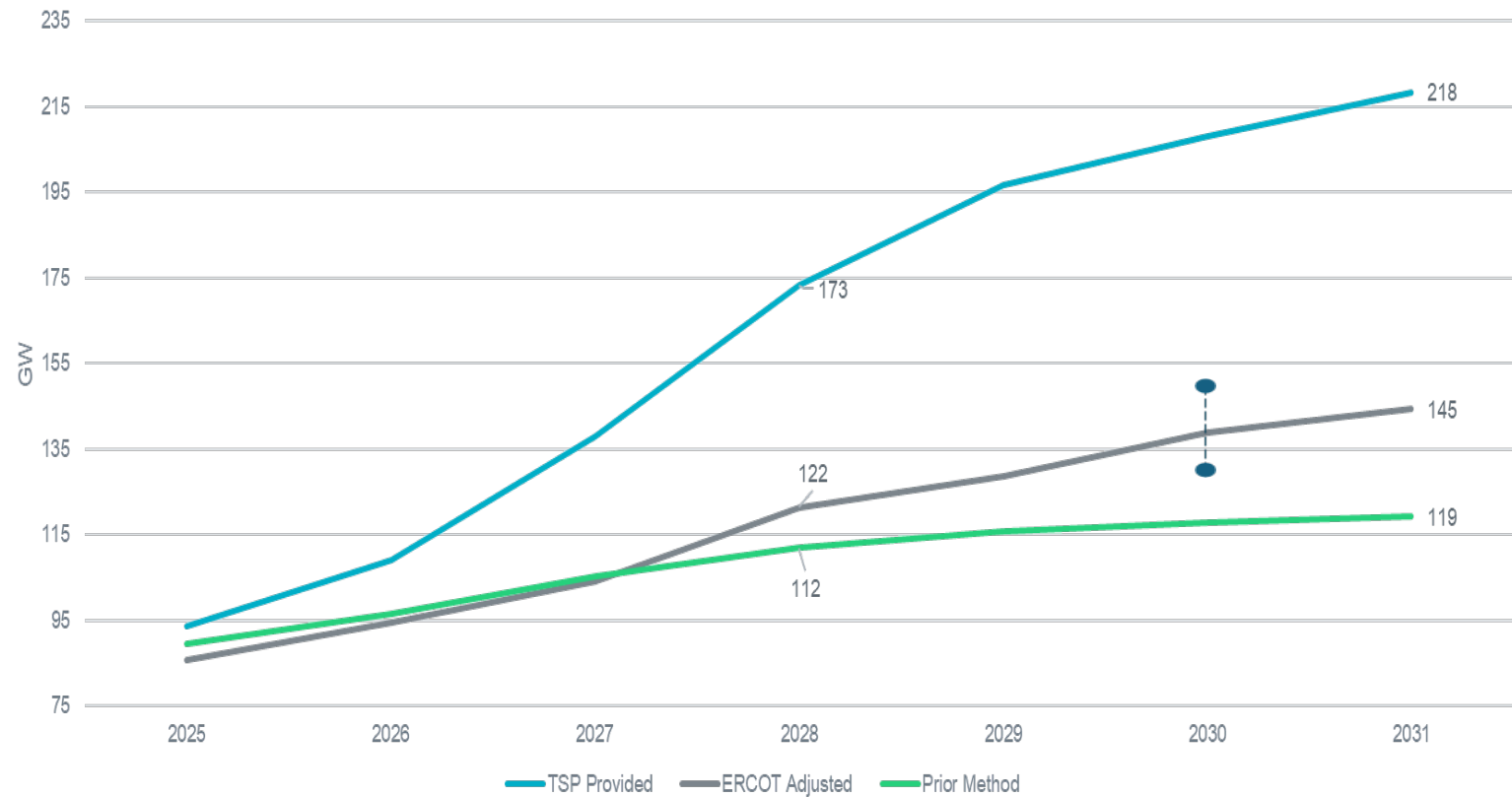
Regulatory Update: PUC

- On April 24, PUC Commissioners are expected to decide whether to move forward with either the 345 kV or 765 kV import paths to the Permian Basin and, potentially, the rest of the state
 - If approved, this would be the first introduction of the 765 kV line option into the ERCOT market
- Texas Energy Fund Update:
 - Two Generation Companies recently pulled projects from the Loan Program. In addition, the PUC Staff announced two other projects will not proceed as part of the loan program
 - These six projects totaled 2,472 MW
 - The 14 remaining applications total 7,285 MW of capacity



Regulatory Update: ERCOT

- ERCOT recently announced demand forecasts through 2031
- Utilizing information from Transmission Providers and their understanding of anticipated new load
- ERCOT reduced these estimates, but the adjusted total and expected demand in 2031 is still significant as shown on the ERCOT provided graph



PEC Partners with LCRA for Steps Forward

- 19 employees participated in LCRA's annual Steps Forward Day on Friday, April 11
- Project sites included:
 - Liberty Hill: Landscaping and beautification at the local water tower
 - Marble Falls: Landscaping a rain harvest garden at Lakeside Park
 - Wimberley: Painting handrails at Old Baldy Park



April 18 is Lineworker Appreciation Day!

2025-02-27 10:10:46

**Taking Our
Members to
New Heights**





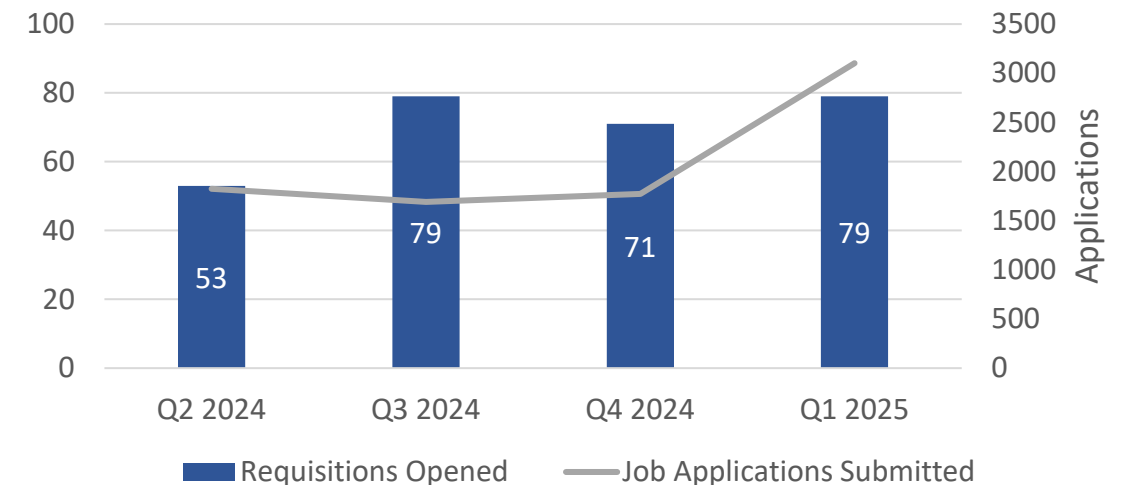
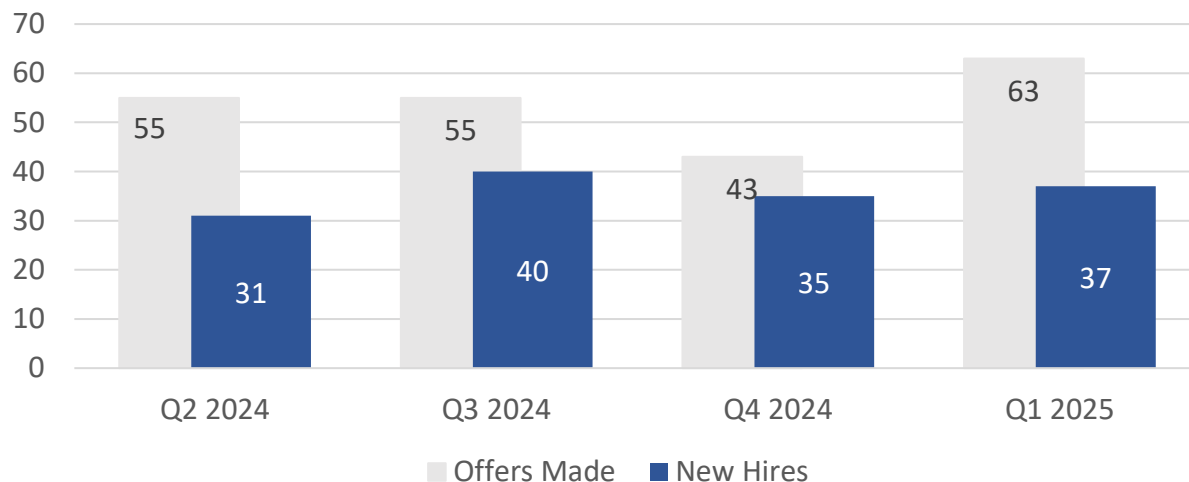
Quarterly Report

Andrea Stover | General Counsel

Over 1,000 Employees

- **For the first time in our history, PEC has over 1,000 active employees**
 - We officially hit 1,000 employees on March 24 and will maintain over 1,000 through the month of April
- **HR keeps pace with hires and applications**
 - HR has continued the pace of consistently filling openings each quarter and welcoming new employees

1,000



PEC 5K 2025

- **PEC 5K Run April 12, 2025 – Pedernales River Park**
 - PEC sponsored run as part of Employee Wellness Program
 - Had refreshments and food trucks
 - More than 160 participants
 - Collected almost 150 children's books for the Johnson City Library



Record Maintenance

- In 2024, PEC's records department updated more than 113,000 documents, purged nearly 250,000 documents, and completed the imaging of Board Of Directors records creating a digital library from PEC's founding in 1938 through today.
- Records Information Month is an opportunity for PEC Employees to evaluate their department's current management, storage and disposal of PEC business records.
- Employees will participate in training that will help align records storage processes with PEC's Records Management Policy and Procedures.

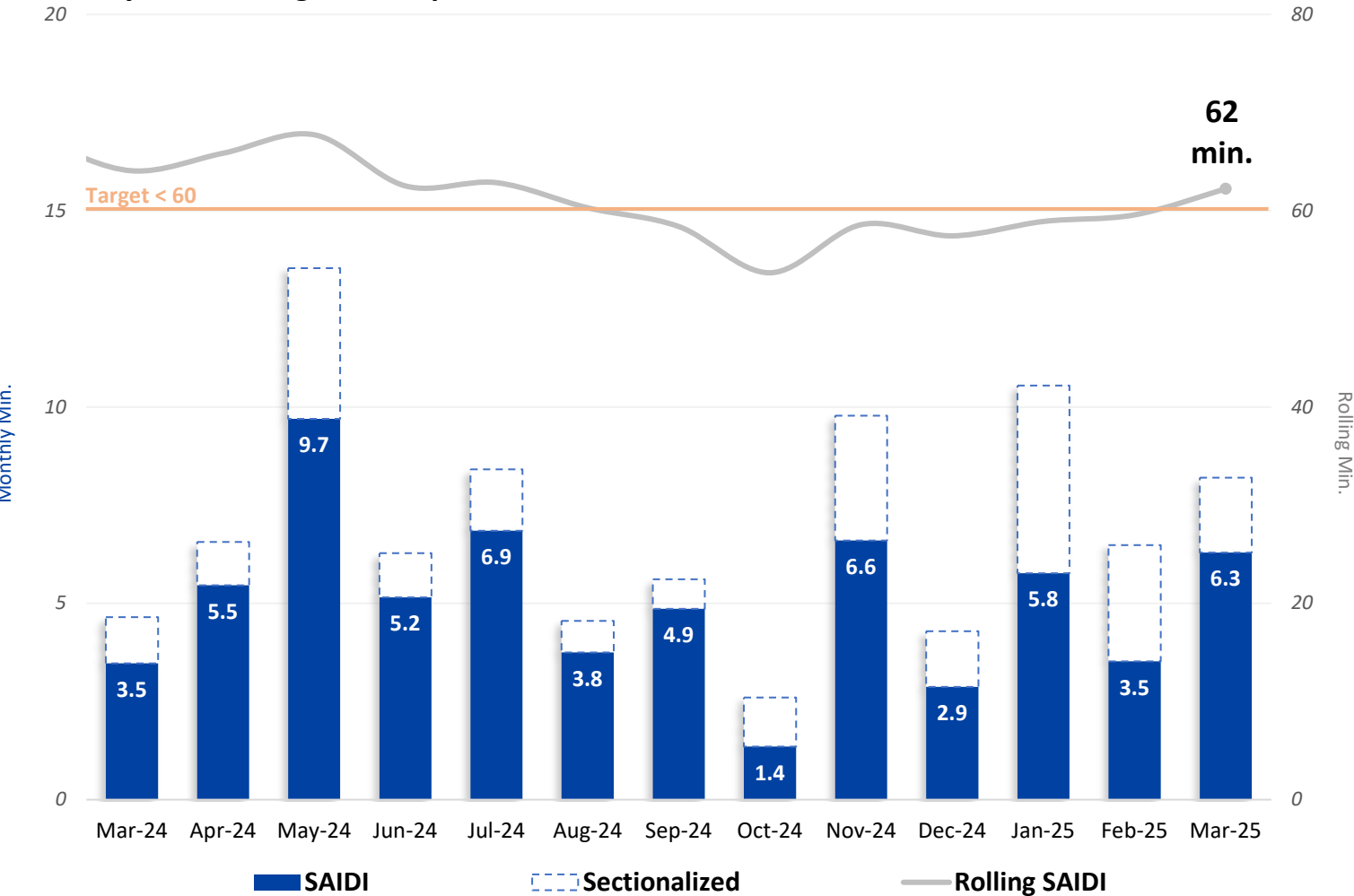




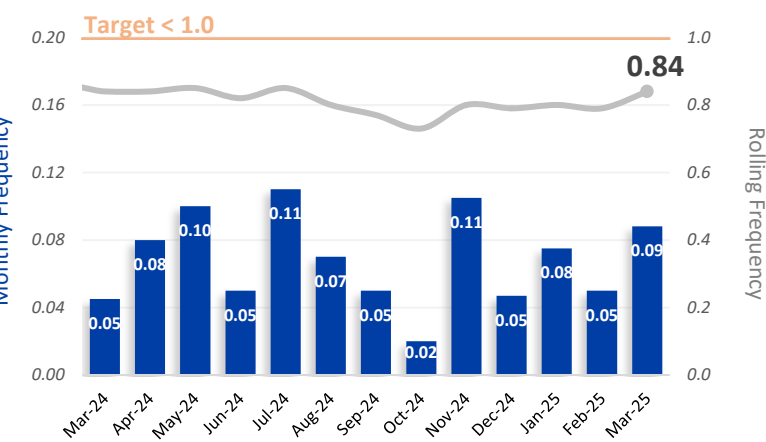
Operations Report

Nathan Fulmer | Chief Operations Officer -
Distribution

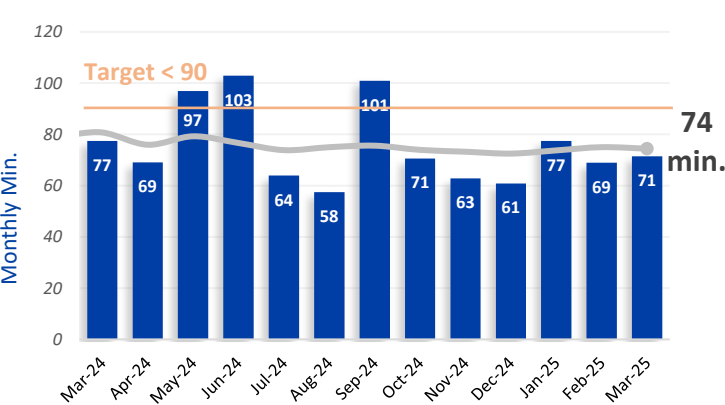
SAIDI System Average Interruption Duration Index



SAIFI System Average Interruption Frequency Index



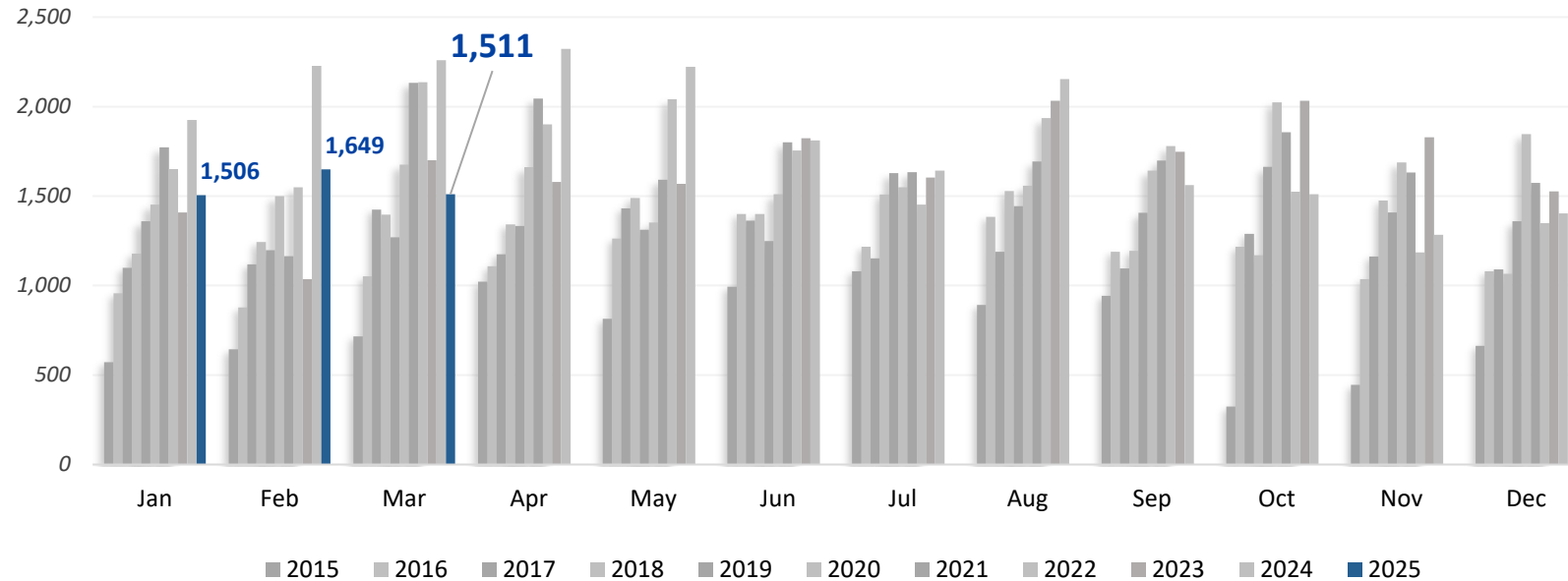
CAIDI Customer Average Interruption Duration Index



System Growth

Line Extensions Completed

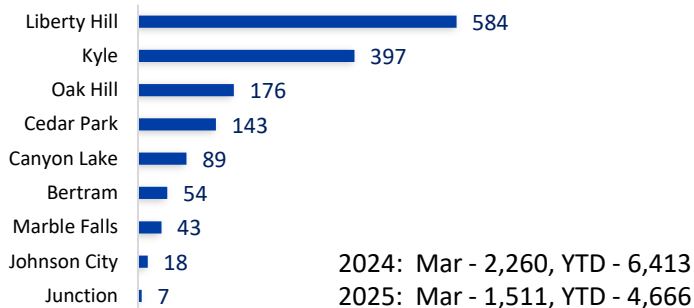
2021: 20,592 2022: 20,262 2023: 19,886 2024: 22,323 2025 YTD: 4,666



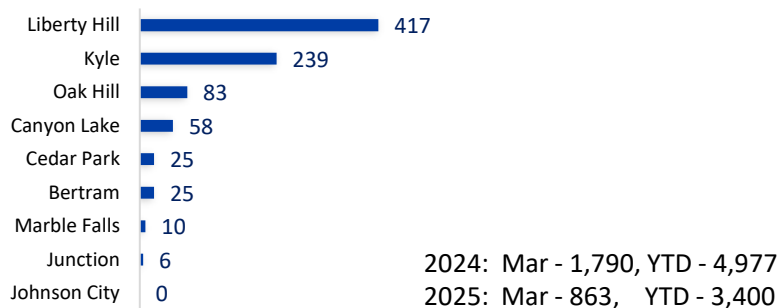
Miles of Distribution Line:

Overhead:	17,804	(69%)
Underground:	7,867	(31%)
Total:	25,671	

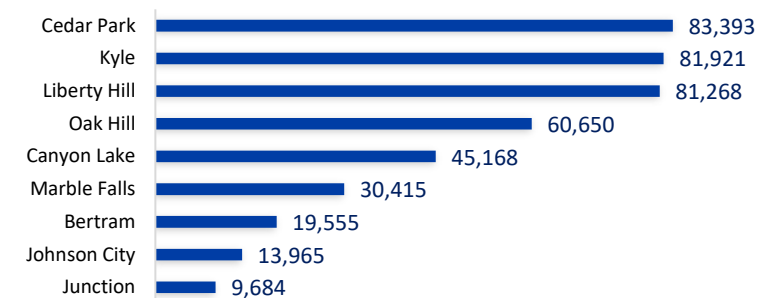
Line Extensions (1,511)



Meter Growth (863)



Meter Totals (426,019)



Voltage Conversions Update

Bertram District

- Burnet Substation
- May - September 2025
- 4,060 Members

Marble Falls District

- Fairland Substation
- March - April 2025
- 2,560 Members

Canyon Lake District

- Sattler Substation
- March 2025
- 3,199 Members

Marble Falls District

- Johnson City Substation
- October 2024
- 4,863 Members



Safety + Technical Training Update

Department Highlights

Safety Training

- On-line Field Safety Training
 - Second Points of Contact – 280 Employees
- On-line All Employees
 - Slips, Trips and Falls Refresher – 858 Employees

Safety Initiatives

- CPR & First Aid Certifications – 112
- Defensive Driving – 10
- DOT Physicals – 16
- Forklift Training/Certifications – 15
- Job Site Safety Observations
 - Safety Advisors - 37, Operations Management – 9
- District Conversions – 2
 - Safety Team representatives attended all days of the two system conversions to support Operations and help ensure that all required work practices and procedures were adhered to.

Safety Spotlight



Gage Faglie
Journeyworker
Marble Falls

As Lead Lineman for his crew, Gage demonstrates effective safety leadership by setting a positive example of fostering a safety culture where employees feel comfortable raising safety concerns through open communication and continuous improvement.

By holding himself and his team members accountable for following safety procedures and addressing safety concerns, Gage ensures that everyone is responsible for creating a safe environment.



March 2025 Financial Report

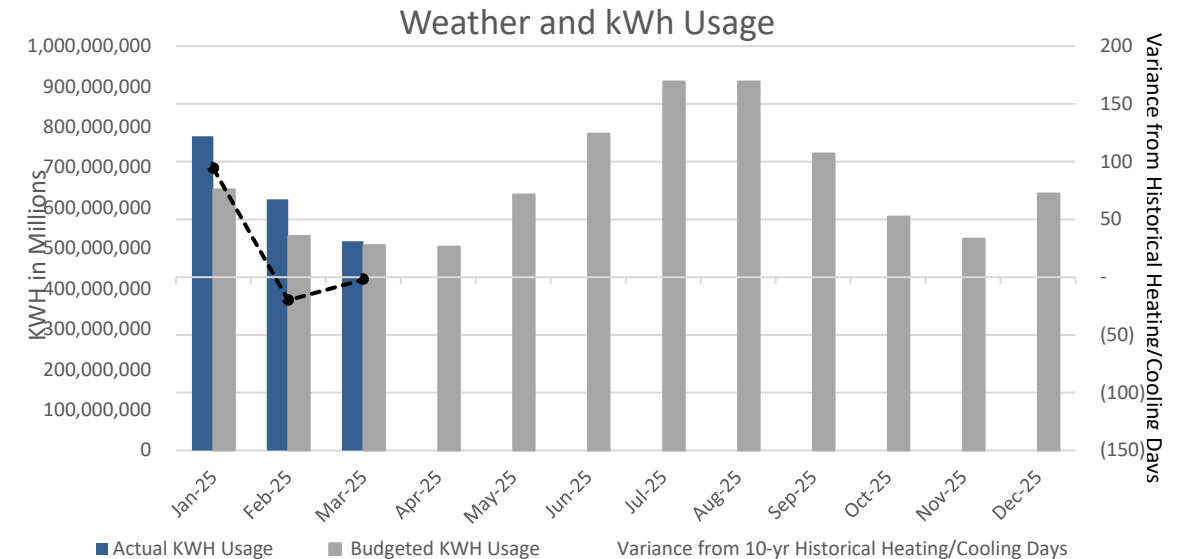
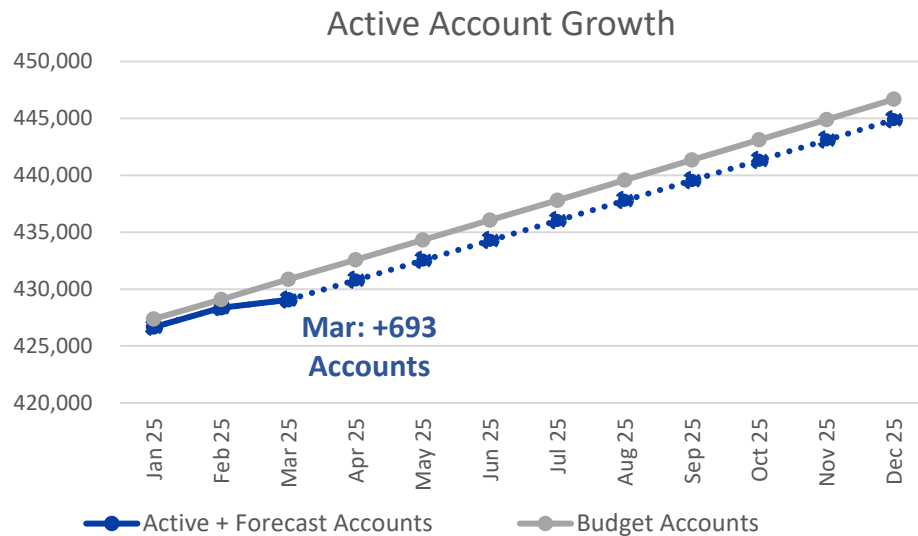
Randy Kruger | Chief Financial Officer

4. Financial Report

Finance at a Glance – March 2025

	MTD (\$ in millions)			YTD (\$ in millions)		
	Actual	Budget	Variance	Actual	Budget	Variance
MWH Sold	517,667	508,270	9,397	1,915,888	1,684,033	231,855
Gross Margins	\$ 26.7	\$ 30.3	\$ (3.6)	\$ 95.0	\$ 91.9	\$ 3.1
Net Margins	\$ (1.7)	\$ 3.2	\$ (4.9)	\$ 15.6	\$ 11.0	\$ 4.6
EBIDA	\$ 9.6	\$ 14.5	\$ (4.9)	\$ 49.1	\$ 44.7	\$ 4.4
Revenue O/(U)	\$ 5.7	\$ 4.9	\$ 0.8	\$ 0.4	\$ (11.0)	\$ 11.4
EBIDA(X)	\$ 15.3	\$ 19.4	\$ (4.1)	\$ 49.5	\$ 33.7	\$ 15.8

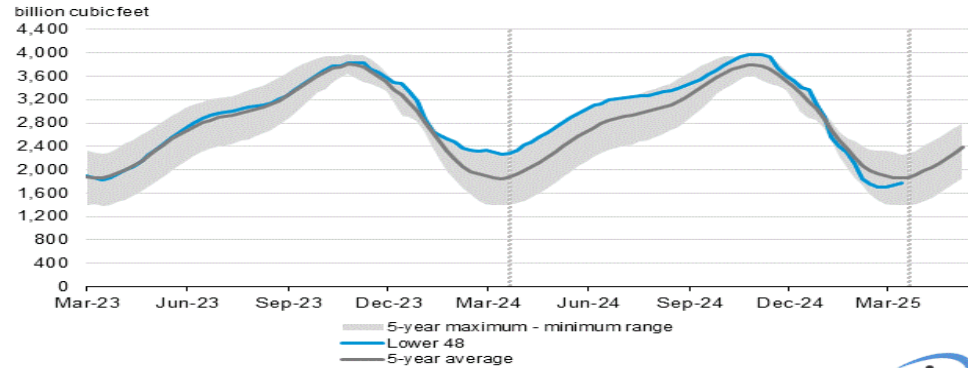
Liquidity Coverage	
Cash & Marketable Securities	\$ 27,734,480
Short Term Facilities	605,000,000
Less: Short Term Borrowings	149,443,581
Available Liquidity	\$ 483,290,899
Liquidity Coverage (Days)	203



4. Financial Report

Power Market Fundamentals

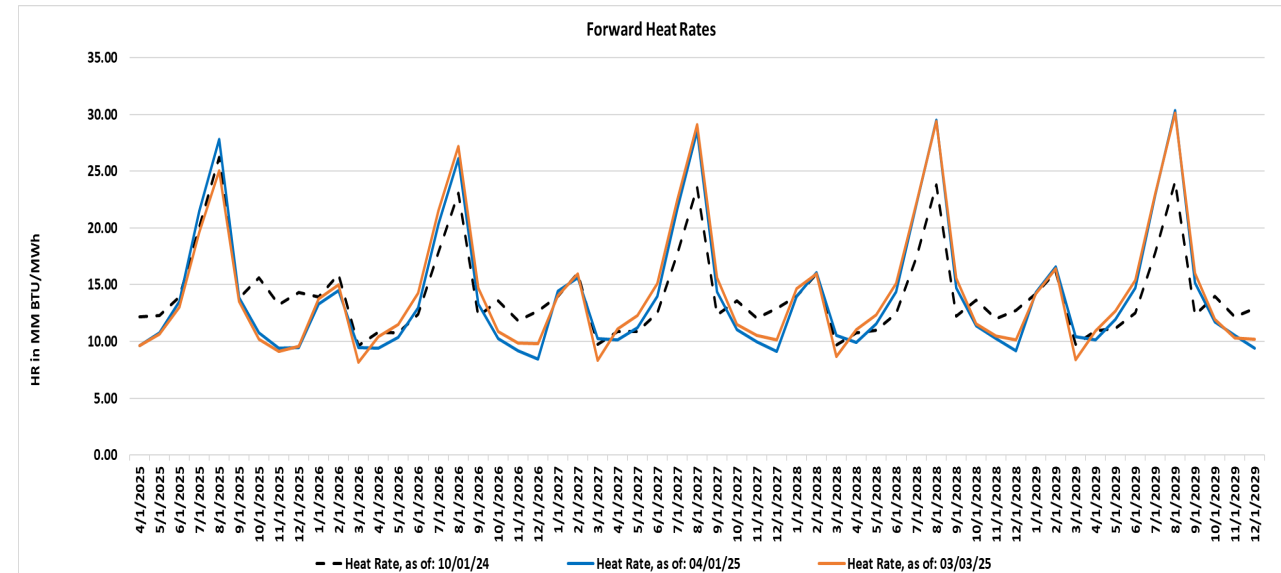
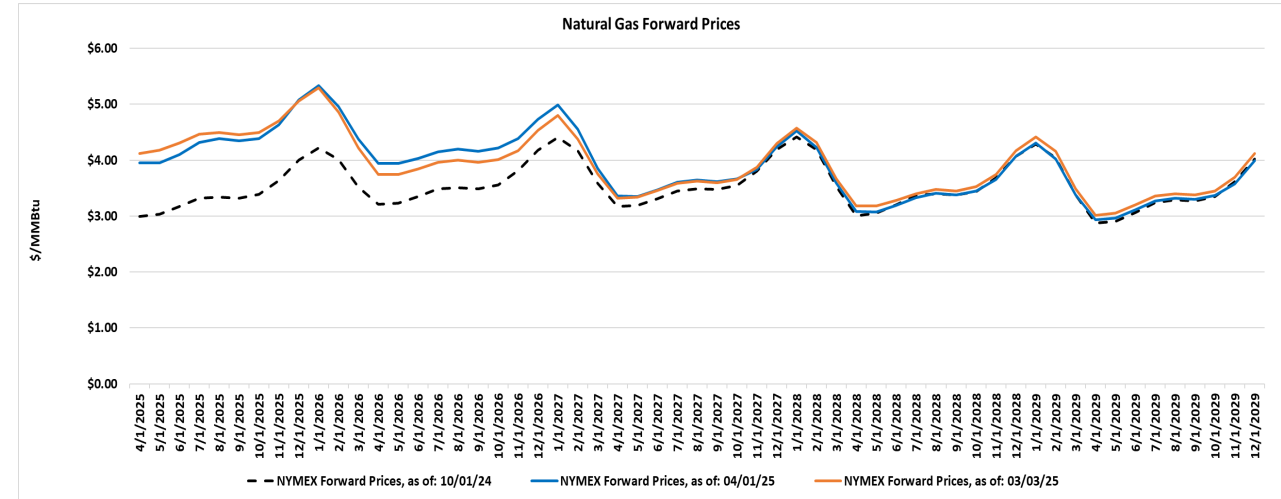
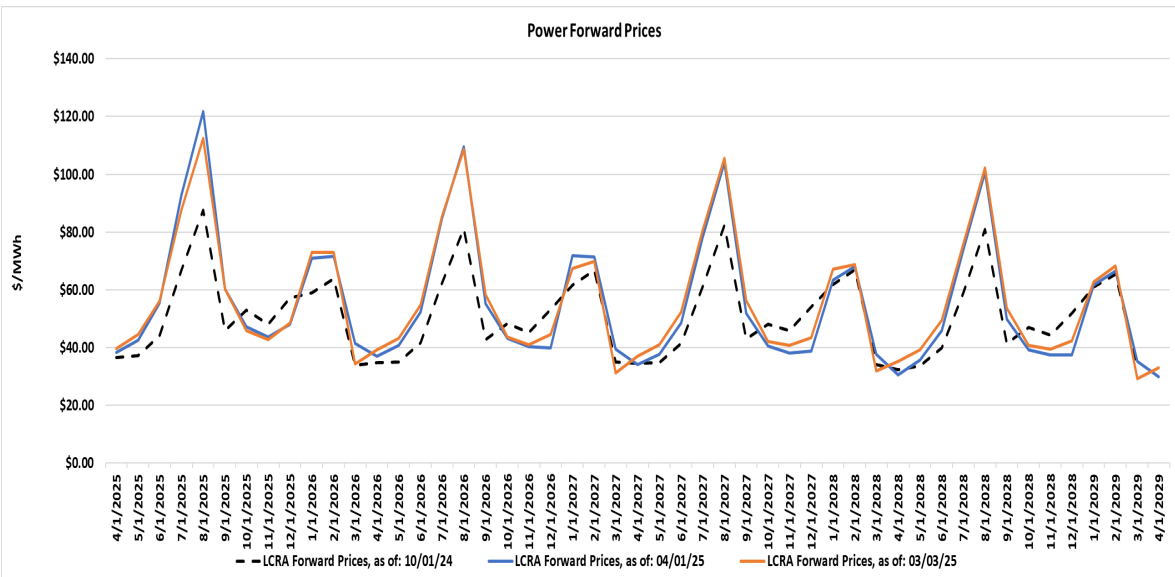
Working gas in underground storage compared with the 5-year maximum and minimum



Data source: U.S. Energy Information Administration

Note: The shaded area indicates the range between the historical minimum and maximum values for the weekly series from 2020 through 2024. The dashed vertical lines indicate current and year-ago weekly periods.

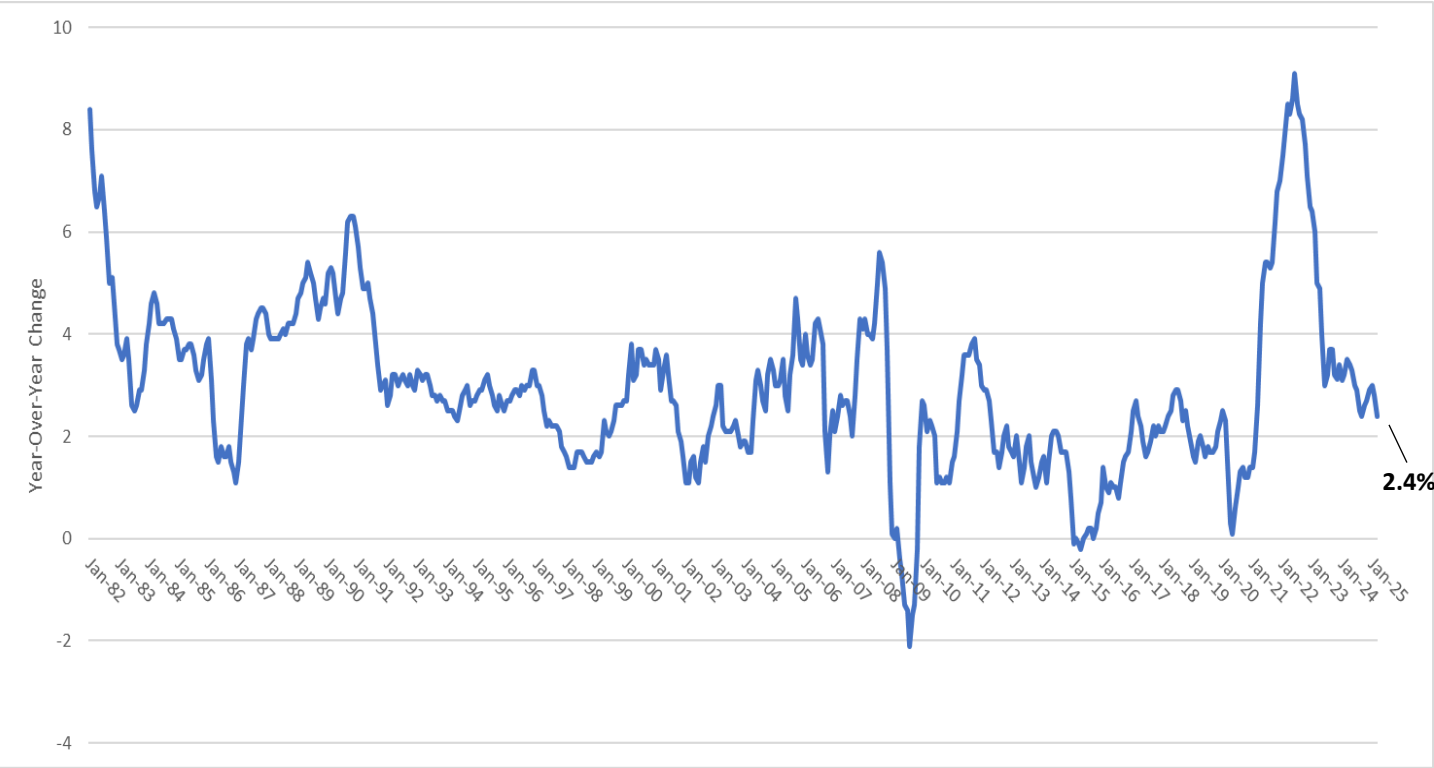
As of March 28, 2025



Inflation

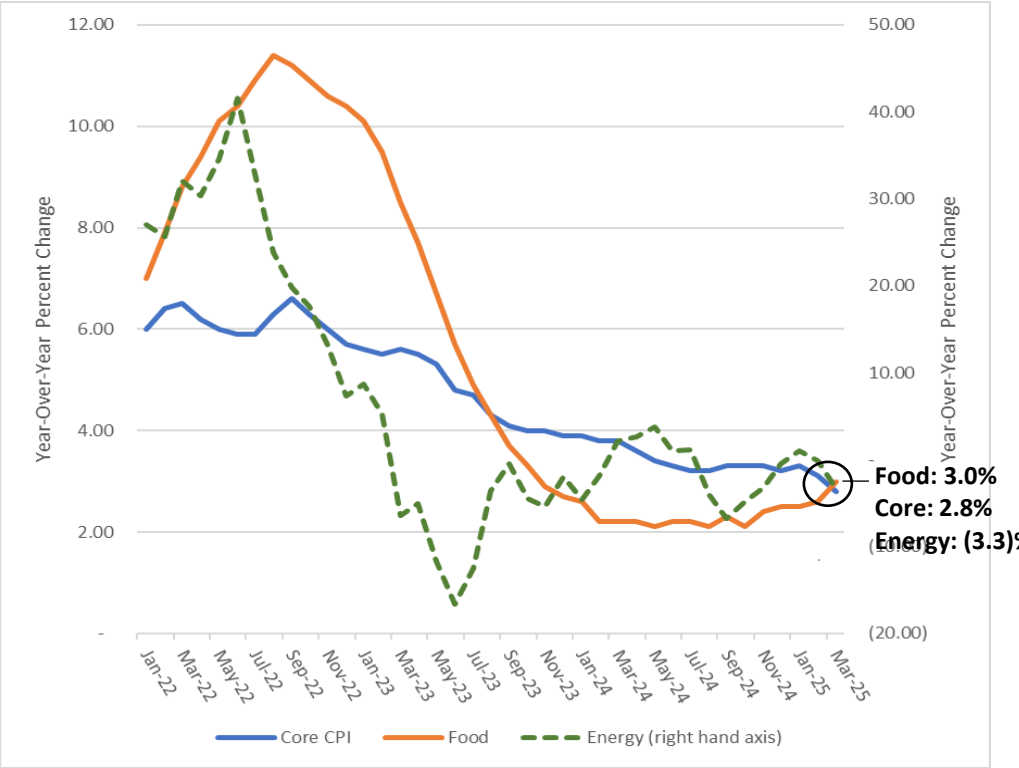
Overall CPI decreased to 2.4% YoY from 2.8% YoY in February; Core CPI decreased to 2.8% YoY from 3.1% YoY in February. Energy prices down -3.3% YoY driven by gasoline (-9.8%) and fuel oil (-7.6%); partially offset by utility gas service (+9.4%) and sustained increased to electricity prices (+2.8%).

CPI Jan 1982 to March 2025



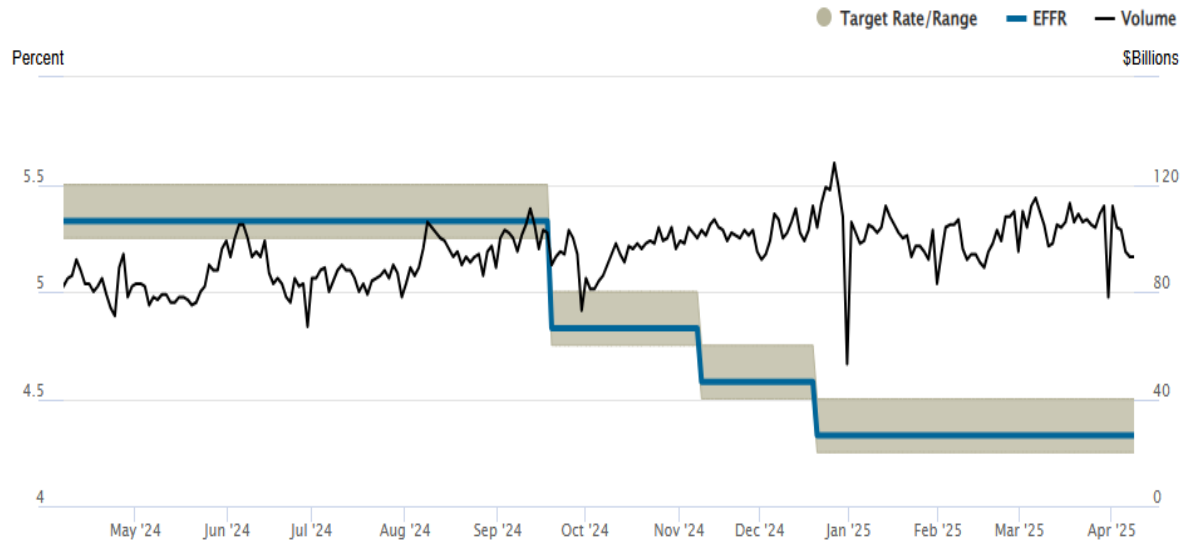
Source: U.S. Bureau of Labor Statistics

Core CPI, Food and Energy
Jan 2022 to Mar 2025



Source: U.S. Bureau of Labor Statistics

Federal Funds Rate



Source: Federal Reserve Bank of New York 04/09/2025

10-Year Note



Source: *The Wall Street Journal* 04/09/2025



CAO Report

JP Urban | Chief Administrative Officer

Member Relations Report

March Member Relations Metrics

- Calls Handled: 21,983
- Chats Handled: 1,359
- Member Experience Satisfaction Rating: 4.51 out of 5
- Member Experience First Contact Resolution: 88.24%
- Would member enjoy working with same agent again?: 93.91%
- Applications for Existing Service
 - Online 2,305 (25%)
 - Offline 6,868 (75%)



Register Today for Camp Save-a-Watt!



- Camp Save-a-Watt is turning five!
- Staff is gearing up — camp begins June 2
- Perfect for Kindergarten through fifth grade
 - Teaches electricity basics
 - Shows new ways to conserve energy
 - Encourages electrical safety at home
- Offering multiple in-person events, including Solar Car Derby
- Registration is open until May 30 at myPEC.com/camp

Community Relations – Power Connections

- Representatives from the City of Wimberley, the City of Horseshoe Bay, the City of Dripping Springs, Hays County, and Austin Energy attended the Power Connection event on Friday, March 28
- On April 3, representatives from the City of Lakeway, the City of Highland Haven, and Hays County visited, too
- During this event, attendees learned about PEC's processes, linework, and restoration procedures during planned and emergency power interruptions



Community Relations – Ready As One



- 100 PEC members attended the inaugural Ready as One event
- PEC and community agencies shared information on emergency resources



PEC Member Appreciation Events



Dripping Springs Founders Day Festival

Friday, April 25

PEC is proud to be this year's parade sponsor! Come meet us Friday and get "All Shook Up" with PEC and our special guest, Elvis Presley.



Mayfest

Saturday, May 3

Join PEC and members from across the Highland Lakes — we'll see you at the Cornhole Tournament!



Appreciation and Look Ahead

Employee Shoutouts*



Ida Horton

Member Relations
Agent
Marble Falls



Angela Fry

Member Relations
Agent 2
Marble Falls



Matt Eckhardt

Journeyworker
Cedar Park



Adam Gonzalez

Lineworker
Apprentice 3
Cedar Park



Justin Carbajal

Lineworker
Apprentice 4
Cedar Park

**These were selected from the hundreds of shoutouts PEC receives each month*



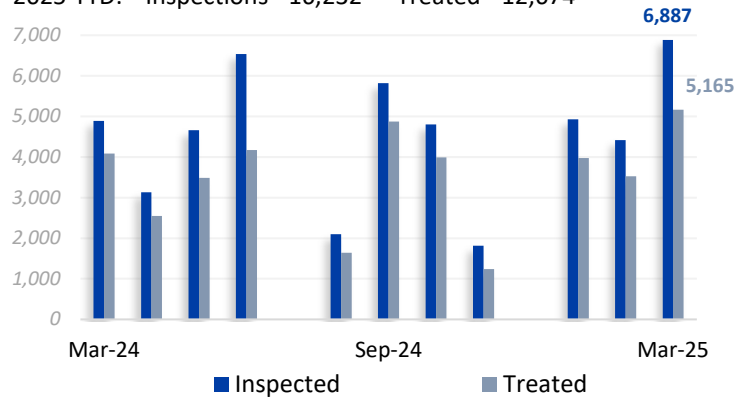
Appendix Pages

Maintenance & Technical Services

Pole Testing & Treatment (PTT)

Poles Inspected & Treated

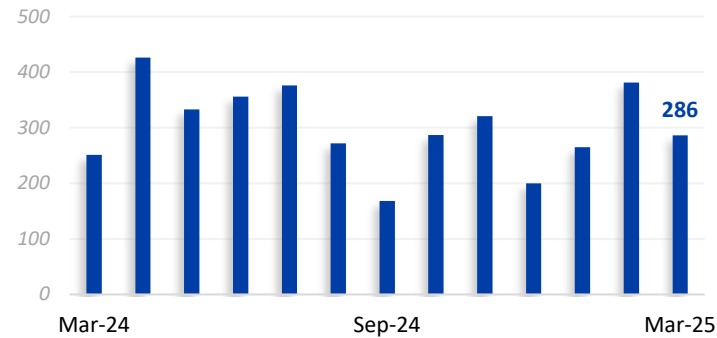
2024 YTD: Inspections - 14,396 Treated - 11,870
2025 YTD: Inspections - 16,232 Treated - 12,674



Underground Equipment

Pad Restorations

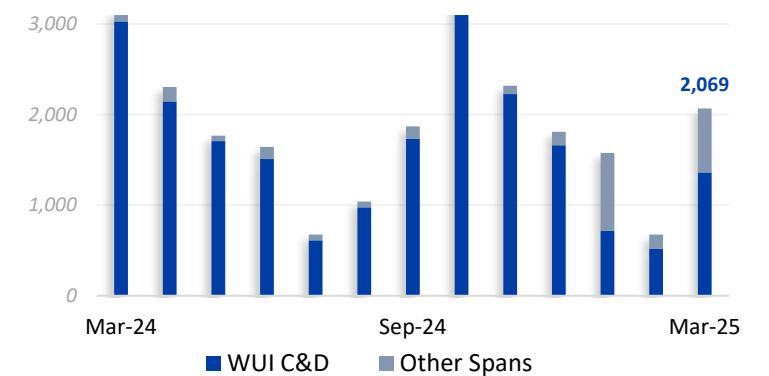
2024 YTD: 1,205
2025 YTD: 932



Vegetation Management

Span Clearings

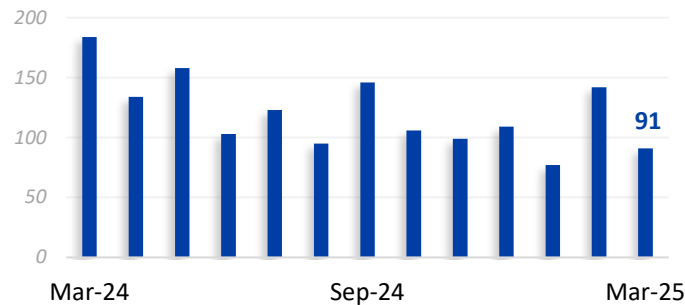
2024 YTD: Encroachments Completed - 8,280
2025 YTD: Encroachments Completed - 4,324



Technical Services

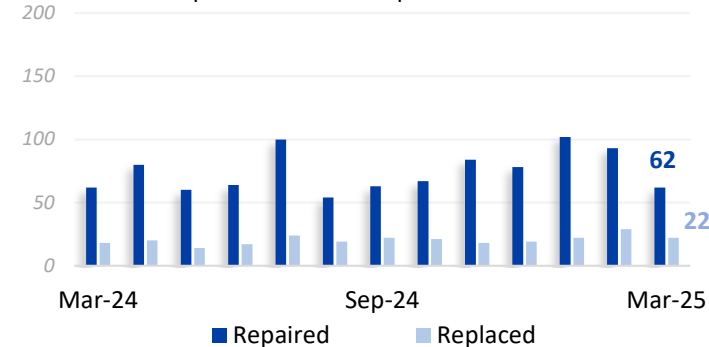
Equipment Inspections

2024 YTD: 652
2025 YTD: 310



Equipment Repaired or Replaced

2024 YTD: Repaired - 193 Replaced - 63
2025 YTD: Repaired - 257 Replaced - 73



Planning Engineering Projects

Project	Completion	Percent Complete
Load Projection Study	Feb 2025	100%
2025 CIP Project Maps	Feb 2025	100%
Capacitor Settings	Mar 2025	95%
4CP Study	Apr 2025	0%
Summer Contingency	May 2025	0%
UFLS Study	Jul 2025	0%
CIP (1 st Draft) Study	Jul 2025	5%
CIP (Final Draft) Study	Aug 2025	0%
Mock UFLS Study	Dec 2025	0%
20-Year Plan Study	Dec 2025	0%
Winter Contingency	Dec 2025	0%

Large Project Updates

Johnson City - Haley Road

Designing the remaining land for base and infrastructure.

Junction

Civil work is underway, project completion forecasted for November 2025.

Marble Falls

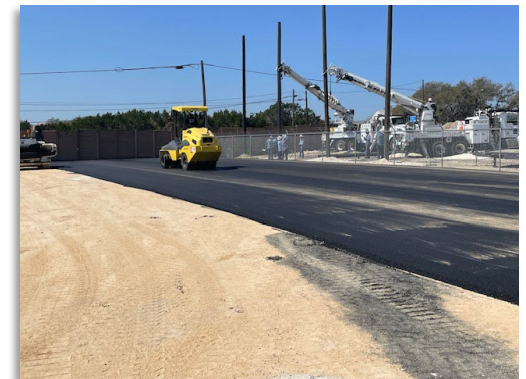
Foundation for fuel island has begun and completion is forecasted by July 2025.

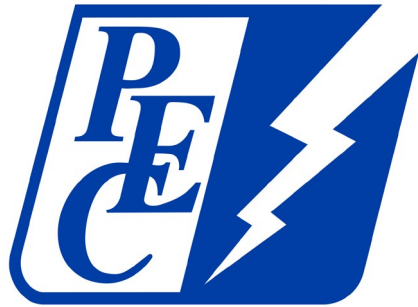
Liberty Hill Parking

Parking area with fence completed on March 3rd.

Kyle Parking

Expanding office parking lot into existing yard. Compacted base and fence is complete. Asphalt and striping is pending coordination with local operations team.





Appendix to March 2025 Financial Presentation to the Board

Randy Kruger | Chief Financial Officer

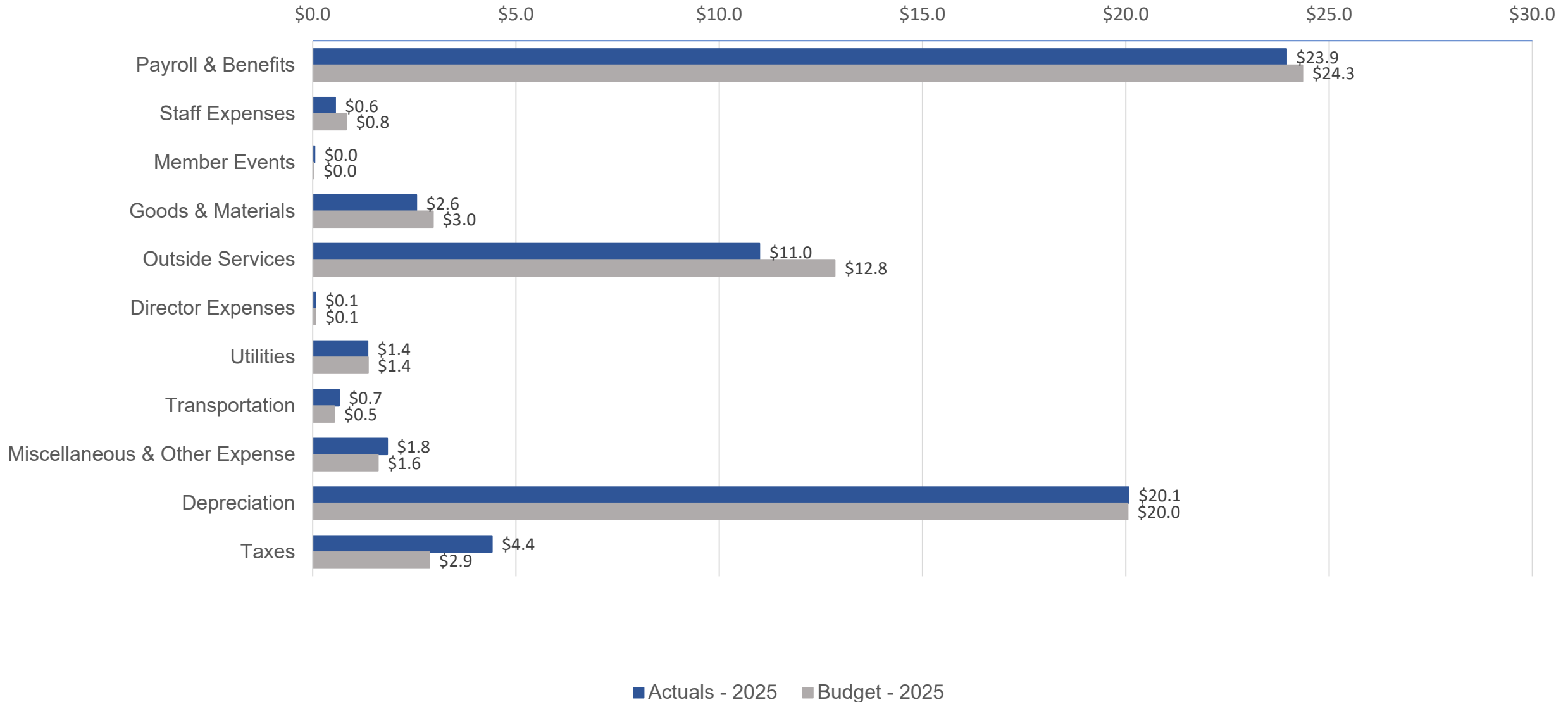
4. Financial Report

Financial Performance

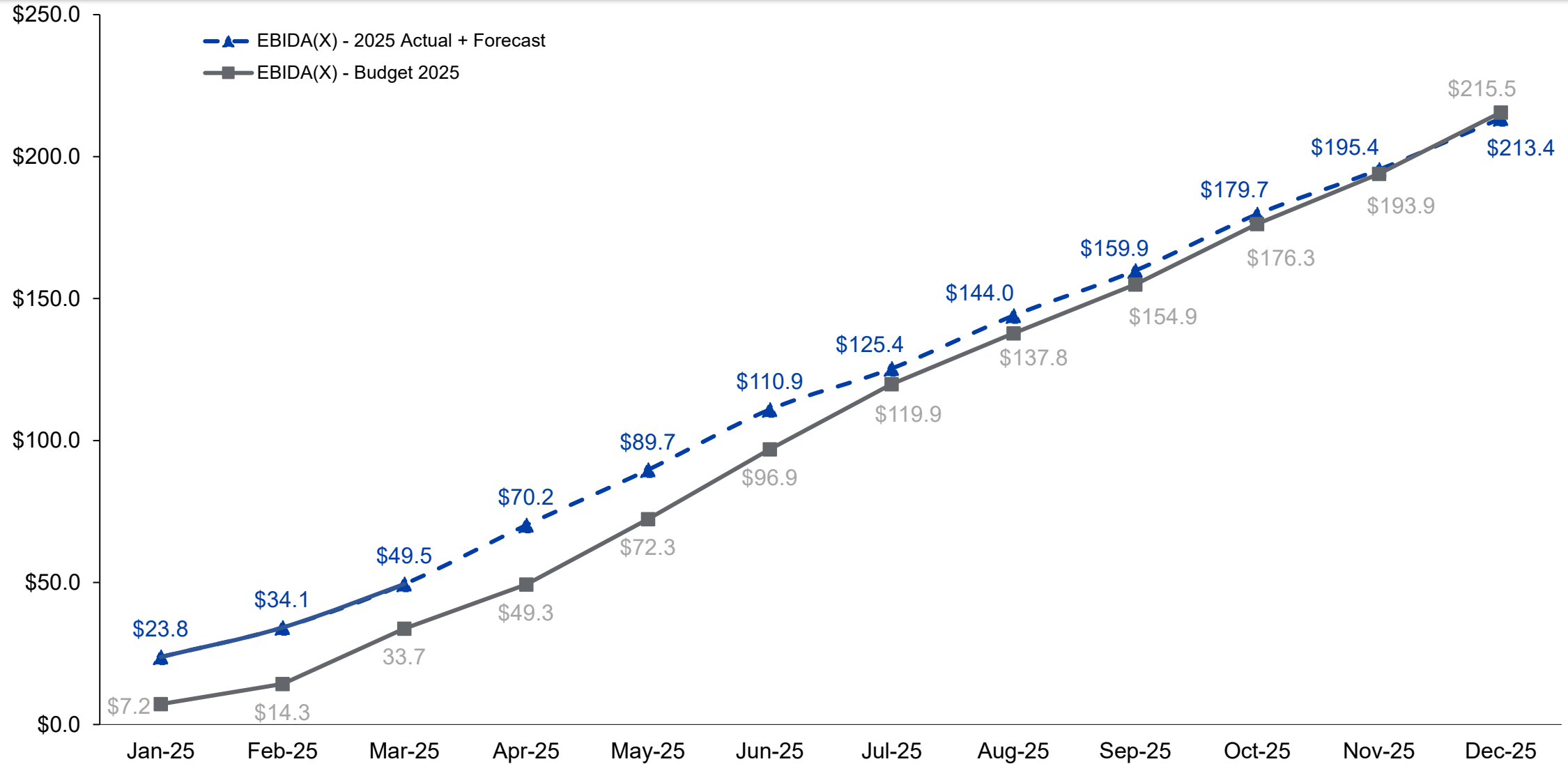
	MTD			YTD			Annual
	Actual	Budget	Prior Year	Actual	Budget	Prior Year	Budget
Gross Margins	\$ 26,684,879	\$ 30,311,879	\$ 26,567,978	\$ 95,033,402	\$ 91,904,452	\$ 85,105,014	\$ 400,301,897
Operating Expenses Ex. Depreciation	17,172,169	15,885,287	15,524,752	46,413,135	47,450,881	42,577,225	193,600,990
Depreciation	6,722,091	6,682,933	7,994,829	20,072,132	20,047,752	23,927,967	83,735,262
Interest Expense	4,516,384	4,621,088	4,220,701	13,443,730	13,628,963	12,449,504	55,458,822
Other Income	(67,137)	(90,000)	(70,117)	(483,346)	(270,000)	(339,997)	(3,873,000)
Net Margins	\$ (1,658,628)	\$ 3,212,571	\$ (1,102,187)	\$ 15,587,751	\$ 11,046,856	\$ 6,490,315	\$ 71,379,824
EBIDA	\$ 9,579,847	\$ 14,516,592	\$ 11,113,343	\$ 49,103,613	\$ 44,723,571	\$ 42,867,786	\$ 210,573,907
Over (Under) Collected Revenues	5,738,251	4,910,681	7,558,891	362,799	(11,023,512)	(6,569,758)	4,966,279
EBIDA(X)	\$ 15,318,098	\$ 19,427,273	\$ 18,672,234	\$ 49,466,412	\$ 33,700,059	\$ 36,298,028	\$ 215,540,186
Total Long-Term Debt							\$ 1,351,315,034
Debt Service							84,882,554
Debt Service Coverage Ratio							2.49
Equity as Percent of Assets							38.5%
Net Plant in Service							\$ 2,292,525,089
Capital Improvement Spend							\$ 238,626,599
Energy Sales kWh	517,666,522	508,269,740	491,903,286	1,915,887,974	1,684,033,209	1,676,683,229	7,910,451,206
Energy Purchases kWh	542,041,172	540,752,049	504,376,593	1,978,050,623	1,791,650,597	1,784,717,172	8,415,380,400
Active Accounts				429,057	430,847	409,610	446,678

Cost of Service (in millions)

YTD Actuals vs Budget through March 2025



EBIDA(X) Year to Date (in millions)



CIP Spend

Construction Category & Description	YTD Actuals	YTD Budget	Variance (Over)/Under Budget	Annual Budget
<u>Distribution</u>				
200 Tie Lines (new construction between existing lines)	1,311,460	5,518,467	4,207,007	14,793,728
300 Conversions or Line Changes	6,514,419	7,132,091	617,672	25,001,608
600 Miscellaneous Distribution Equipment	8,235,727	13,555,594	5,319,867	54,370,706
700 Other Distribution Items	103,104	97,346	(5,758)	391,422
Distribution Total	\$ 16,164,710	\$ 26,303,498	\$ 10,138,787	\$ 94,557,465
<u>Substation</u>				
400 New Substations, Switching Stations and Meter Points	5,841,415	5,149,463	(691,952)	20,969,733
500 Substations, Switching Stations and Meter Point changes	2,697,927	12,696,782	9,998,855	42,471,140
Substation Total	\$ 8,539,342	\$ 17,846,246	\$ 9,306,903	\$ 63,440,873
<u>Transmission</u>				
800 New Transmission Lines	(374,262)	117,074	491,336	1,125,657
1000 Line and Station Changes	3,648,939	9,685,730	6,036,790	49,195,185
Transmission Total	\$ 3,274,678	\$ 9,802,804	\$ 6,528,126	\$ 50,320,843
<u>General Plant</u>				
2000 Facilities	728,609	6,005,869	5,277,260	17,789,898
3000 Information Technology	214,817	2,108,154	1,893,337	7,017,520
4000 Tools & Equipment	75,200	125,000	49,800	500,000
5000 Vehicles	2,510,914	1,250,000	(1,260,914)	5,000,000
Total General Plant	\$ 3,529,540	\$ 9,489,023	\$ 5,959,483	\$ 30,307,418
Accrued WIP & Prepaid Aid	\$ (13,211,997)	\$ -	\$ 13,211,997	\$ -
Total Capital Improvement Plan Spend	\$ 18,296,273	\$ 63,441,570	\$ 45,145,297	\$ 238,626,599

Multi-Year CIP Spend – Distribution and Substation

Construction Category & Project (\$ in thousands)	Prior Years Spend	YTD Actuals	Project Actuals Post Approval	Project Budget	Remaining Budget
<u>Distribution</u>					
Fairland Make-ready Voltage Conversion	\$ 5,315.2	\$ 768.4	\$ 6,083.7	\$ 5,864.3	\$ (219.4)
HSB Make-ready Voltage Conversion	1,368.2	203.4	1,571.6	6,517.0	4,945.4
Convert Burnet to 24.9KV	6,519.7	670.3	7,190.0	5,757.7	(1,432.3)
BT30-BU30 Feeder Tie	-	38.7	38.7	4,849.8	4,811.1
Wirtz Voltage Conversion	-	6.7	6.7	4,011.1	4,004.4
Distribution Total	\$ 13,203.1	\$ 1,687.6	\$ 14,890.7	\$ 26,999.9	\$ 12,109.2
<u>Substation</u>					
Lago Vista Install 46.7 MVA Trf	\$ 6,711.1	\$ 1,265.7	\$ 7,976.9	\$ 17,054.5	\$ 9,077.6
Nameless Install 46.7 MVA Trf	448.0	103.8	551.8	6,086.6	5,534.8
Old Eighty One Construct New Substation	320.8	189.2	510.0	11,522.0	11,012.1
Bee Creek Upgrade T1 and T2 to 46.7 MVA	79.3	127.9	207.1	7,046.5	6,839.4
Ridgmar Install 46.7 MVA Trf	10.1	147.1	157.2	5,101.0	4,943.8
Spanish Oak Install 46.7 MVA Trf	74.6	49.5	124.2	4,657.4	4,533.2
Turnersville Upgrade to T2	0.2	-	0.2	3,358.2	3,358.0
Graphite Mine T1 Upgrade	758.3	155.8	914.2	4,955.6	4,041.4
Whitestone Upgrade T1 and T2 to 46.7 MVA	690.6	312.2	1,002.8	8,272.7	7,269.9
Friendship Upgrade T1 and T2 to 46.7 MVA	1,788.0	920.9	2,708.9	5,919.1	3,210.2
Cedar Valley T1 and T2 Upgrade	198.0	41.1	239.0	4,949.3	4,710.2
Dripping Springs Upg T1 & T2 to 46.7 MVA	4,786.4	(1,427.9)	3,358.6	4,323.4	964.8
T587 BN to MT Remote Ends	357.7	88.3	446.0	3,965.0	3,519.0
New Site 2147 - Construct 46.7 MVA Sub	-	-	-	1,772.1	1,772.1
Florence Construct new 46.7 MVA Sub	7,504.6	1,475.0	8,979.6	10,899.5	1,920.0
RR12-LaCima Construct 46.7 MVA Sub	503.4	75.5	578.9	5,362.3	4,783.4
Andice Install 3rd transformer	4.1	-	4.1	13,199.0	13,194.9
Yarrington Install Second Transformer	-	-	-	5,861.5	5,861.5
Transmission RTU Additions - Phase 2	-	2.2	2.2	7,905.6	7,903.4
Substation Total	\$ 24,235.3	\$ 3,526.3	\$ 27,761.6	\$ 132,211.3	\$ 104,449.7

Multi-Year CIP Spend – Transmission and General

Construction Category & Project (\$ in thousands)	Prior Years Spend	YTD Actuals	Project Actuals Post Approval	Project Budget	Remaining Budget
<u>Transmission</u>					
North Hays Cty Wimberley Transmn	\$ 339.5	\$ -	\$ 339.5	\$ 66,360.7	\$ 66,021.2
T318 BN-DH Overhaul	741.9	149.7	891.6	22,109.1	21,217.5
T587 BN-MT Overhaul	755.3	81.2	836.4	21,208.7	20,372.3
T360 FS-RU Storm Hardening	265.9	21.3	287.3	15,105.9	14,818.6
T333 LV to NL Overhaul	11,721.8	1,709.5	13,431.3	11,850.5	(1,580.8)
T623 TP-CV Storm Hardening	5,023.7	360.8	5,384.5	11,697.8	6,313.3
T358 CV-FS Storm Hardening	483.9	69.6	553.5	9,318.9	8,765.5
T380 BD-TV Overhaul	7,465.4	946.0	8,411.4	5,880.0	(2,531.4)
T323 PF-MF Overhaul	13,427.0	0.5	13,427.5	13,675.8	248.3
T328 BU-MC Upgrade 440MVA	-	-	-	10,615.7	10,615.7
Transmission Total	\$ 40,224.3	\$ 3,338.6	\$ 43,562.8	\$ 187,823.1	\$ 144,260.3
<u>General Plant</u>					
JC District Operations	\$ 3,146.3	\$ 42.5	\$ 3,188.8	\$ 31,451.6	\$ 28,262.8
Cedar Park Improvements	-	-	-	13,487.6	13,487.6
Liberty Hill Additional yard/warehouse expansion	-	6.0	6.0	13,787.6	13,781.6
Junction Warehouse Yard Expansion	2,732.6	913.7	3,646.3	17,795.4	14,149.2
Total General Plant	\$ 5,878.9	\$ 962.2	\$ 6,841.1	\$ 76,522.2	\$ 69,681.1



myPEC.com