



Cooperative Update

Julie C. Parsley | Chief Executive Officer
Eddie Dauterive | Chief Operations Officer
Randy Kruger | Chief Financial Officer
Don Ballard | General Counsel
JP Urban | EVP, External Relations



CEO Report

Julie C. Parsley | Chief Executive Officer

Legislative Update

- Governor Greg Abbott called a third special session of the Texas Legislature
 - Began Monday, October 9 at 1 p.m.
 - School vouchers, border security, public safety, and ending COVID-19 restrictions are the focus of this special session
 - No utility or wholesale power market issues at this time; staff continues to monitor



Regulatory Update: ERCOT and PUC Transition to Winter Preparedness

ERCOT and PUC are shifting attention to winter preparedness

PUC Activities

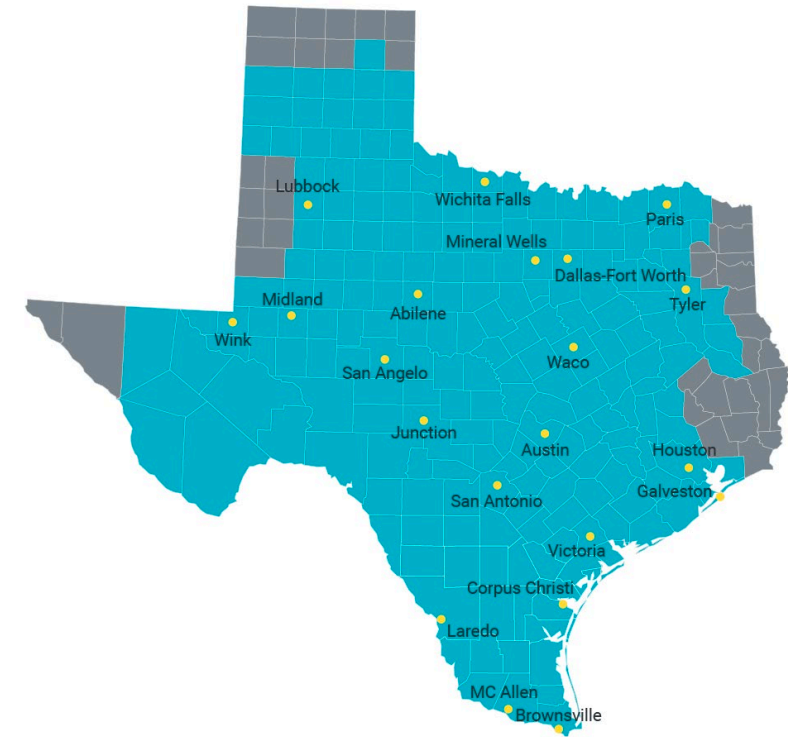
- PUC and ERCOT are hosting a workshop today, Friday, October 20, on winter storm preparedness
- PUC approved new EEA thresholds, which will trigger entering an emergency event sooner

ERCOT Activities

- Announced a new Monthly Outlook for Resource Adequacy (MORA) report, which will replace the Seasonal Assessment of Resource Adequacy (SARA) report
 - Shift to probability-based assessment
 - MORA report released for December 2023
 - Using Winter Storm Elliott-like conditions, report indicated a 20% risk of entering EEA conditions in December
- ERCOT issued an RFP seeking 3,000 MW of capacity to manage grid reliability this winter season
 - Procuring these 3,000 MW lowers risk to less than 10%

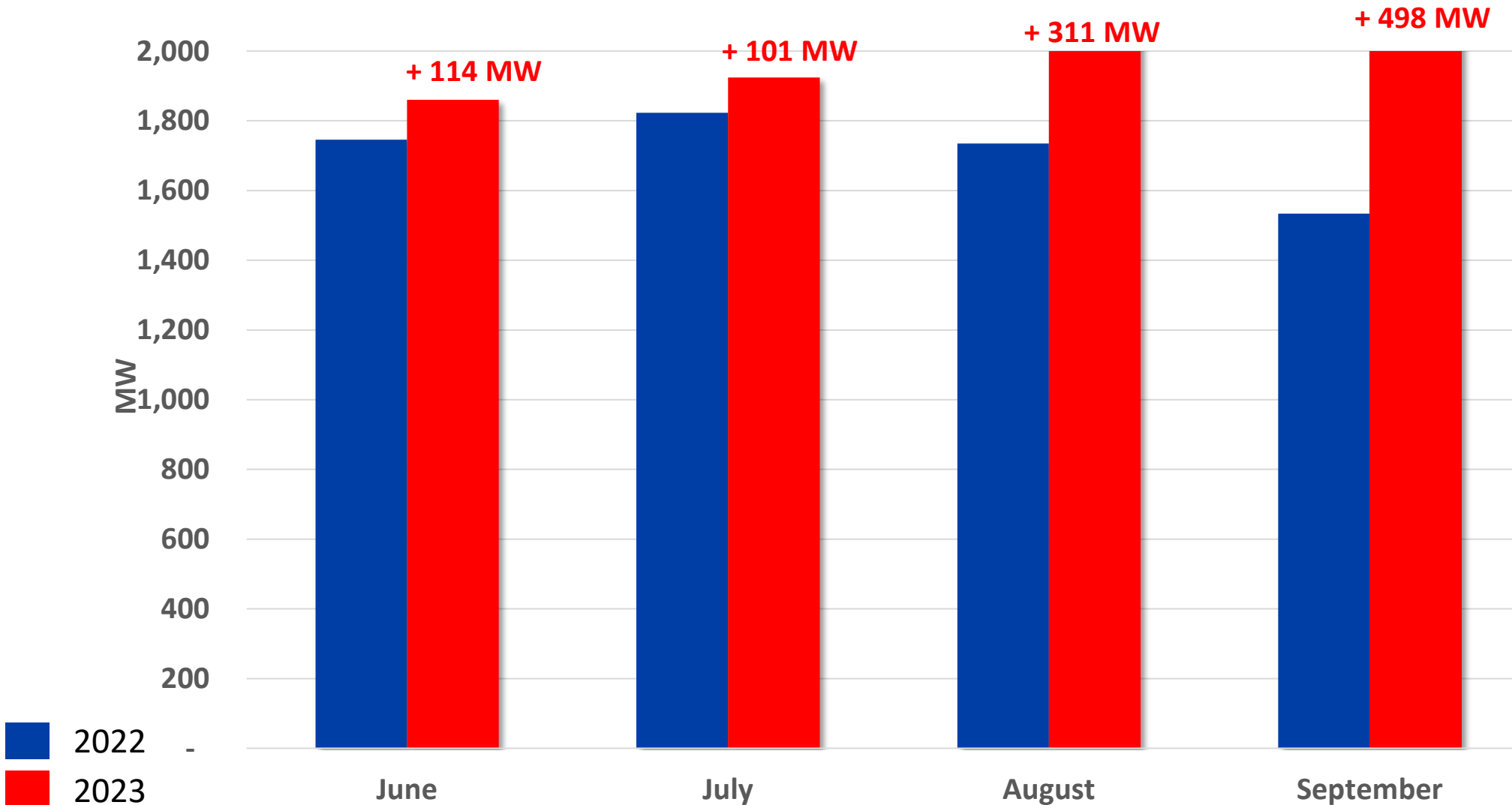
ERCOT Releases Fall SARA

- ERCOT recently released its Fall 2023 Seasonal Assessment of Resource Adequacy (SARA) report
- ERCOT region is expected to have sufficient installed generating capacity to serve peak demands in the upcoming fall season (October – November) under normal system conditions
- Fall 2023 peak demand of 69,654 MW anticipated (includes impacts of rooftop solar and large flexible load additions)



Monthly 4CP Summer Peak Comparison

PEC Peaks for TCOS calculations (4CP)



- 15% increase compared to last year
- Peaks determined by 15-min settlement interval
- 2023 peaks are indicative at this time but not expected to change significantly

PUC Interim Chair Jackson Visits PEC



- The PUC's newest Commissioner and current Interim Chair Kathleen Jackson spent September 29 with staff in Johnson City and was treated to the following:
 - Hands-on Transbanker demonstration
 - Presentation on PEC's history
 - Roundtable discussion with employees from across PEC
 - Tour of LBJ Boyhood Home

PEC Welcomes OPUC in Johnson City

- PEC proudly hosted the Office of the Public Utility Counsel (OPUC) on September 25
 - Courtney Hjaltnan, Chief Executive and Public Counsel
 - Matthew Cooksey, GR Specialist
- Toured headquarters and received updates on PEC business and upcoming projects



Utility Industry News and Events



**Gulf Coast Power Association
38th Annual Fall Conference
Austin, Texas
October 3–4**

- Staff attended event hosted at the AT&T Conference Center in Austin
- Provided opportunity to meet with industry leaders, share ideas, and learn the latest market developments
- Sessions covered a variety of topics impacting the wholesale power market and Texas utilities, including resource adequacy, energy efficiency and demand response, plus resiliency

PEC Helps Power Local Educators

- \$23,000 in contributions to area education foundations
- Helps fund classroom activities, teacher grants, and scholarships
- Funded **100%** through Power of Change and the generosity of PEC members





**Happy
National
Cooperative
Month!**



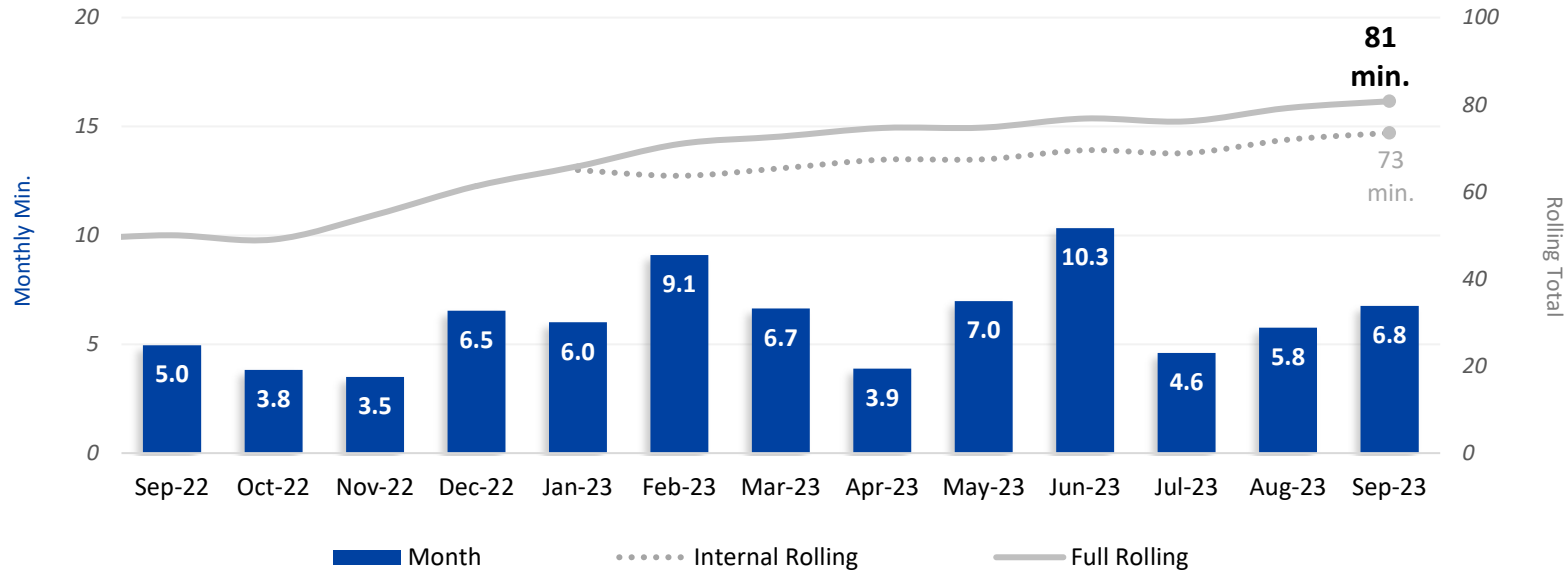


Operations Report

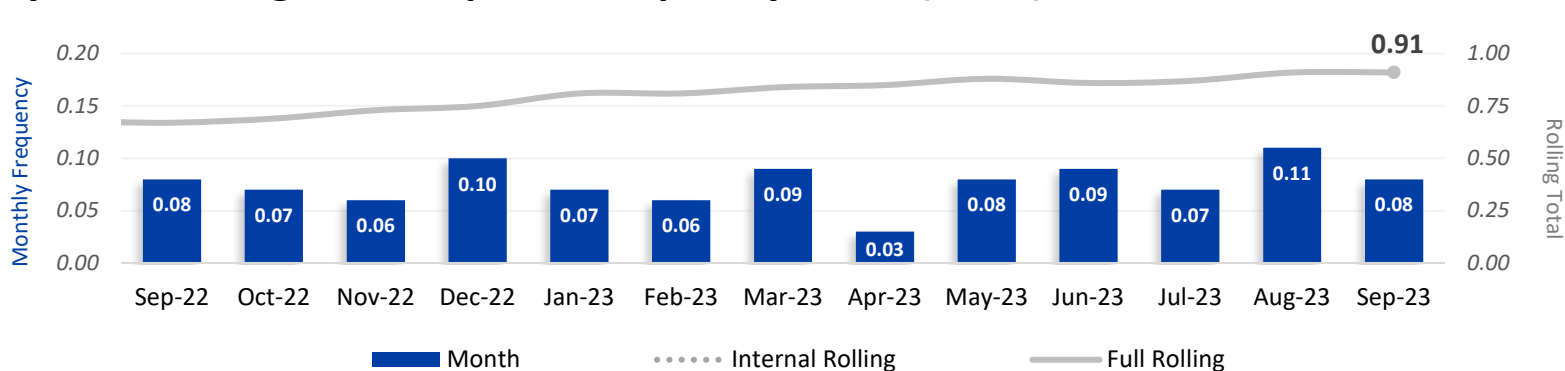
Eddie Dauterive | Chief Operations Officer

Reliability

System Average Interruption Duration Index (SAIDI)



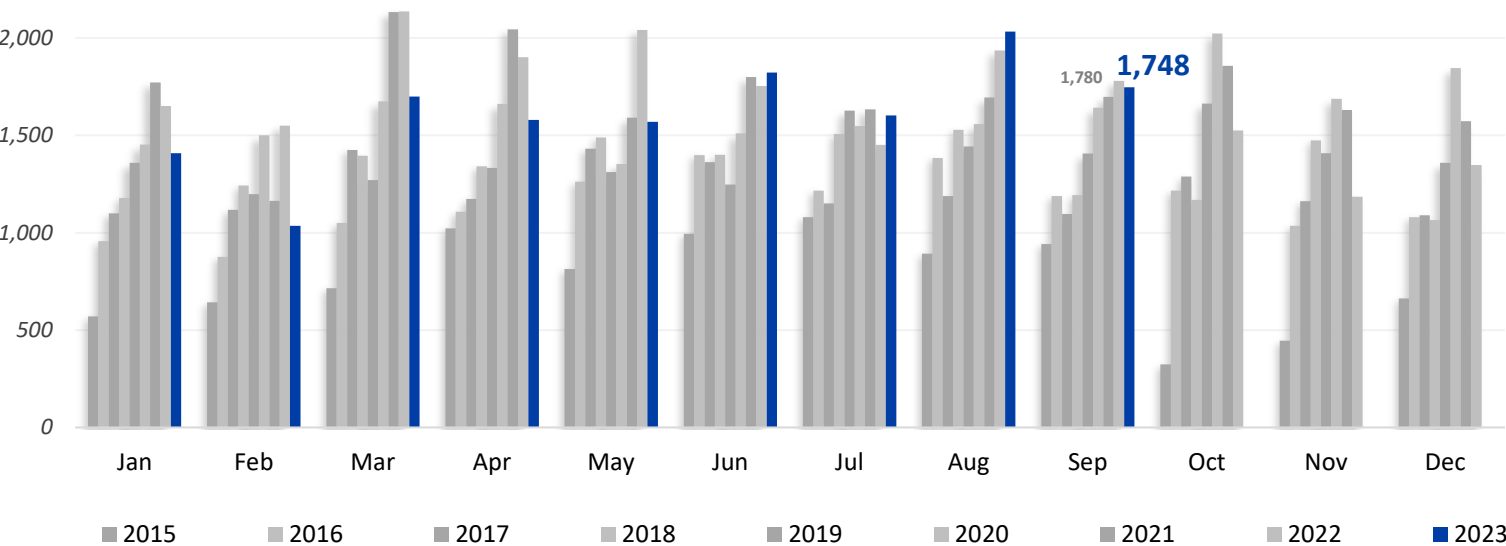
System Average Interruption Frequency Index (SAIFI)



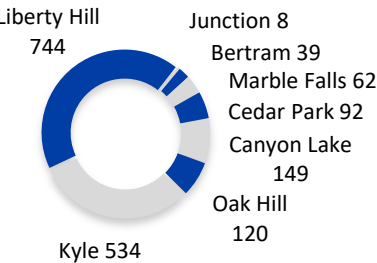
System Growth

Line Extensions Completed

2019: 16,640 2020: 19,458 2021: 20,592 2022: 20,262 2023 YTD: 14,500



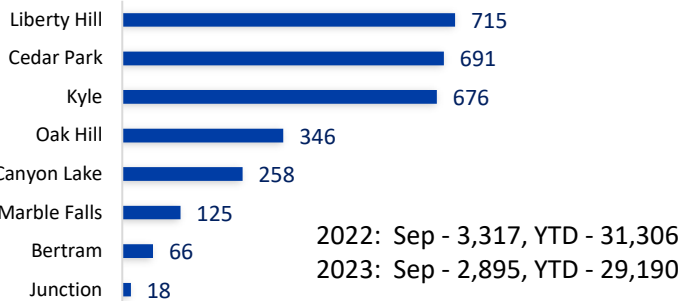
Line Extensions Per District (1,748)



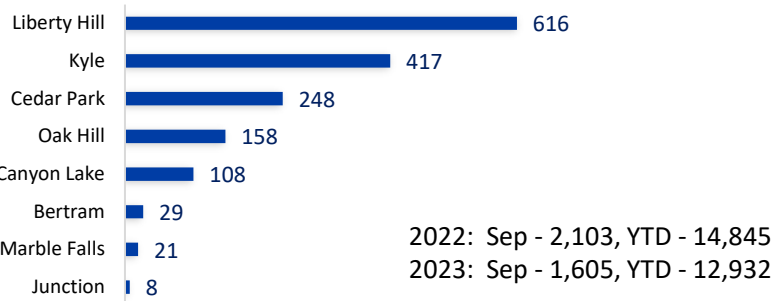
Miles of Distribution Line:
Overhead: 17,686 (71%)
Underground: 7,127 (29%)
Total: 24,813



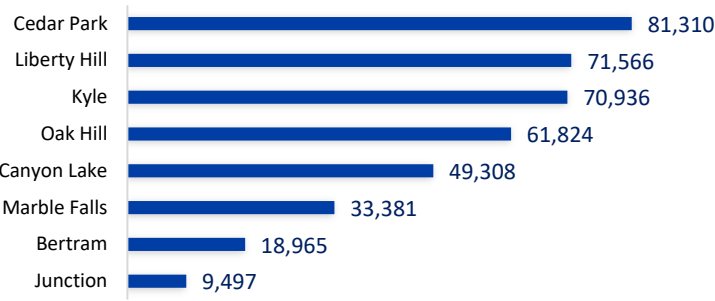
Member Applications (2,895)



Meter Growth (1,605)



Meter Totals (396,787)



AMI Deployment

Deliveries and Exchange Schedule (as of October 1)

Estimated completion dates dependent on continued fulfillment of meter delivery.

**Meters exchanged since
deployments restarted:**

57,502

**Total RF meters installed
coop-wide:**

208,290

Projected full completion:

End of 2nd Qtr 2024

Projected district completions:

CP: Oct. 23

MF: Apr. 24

KY: Dec. 23

BT: May. 24

OH: Feb. 24

CL: Jul. 24

Cedar Park Exchanges:

- Placed: 44,022
- Remaining: 317

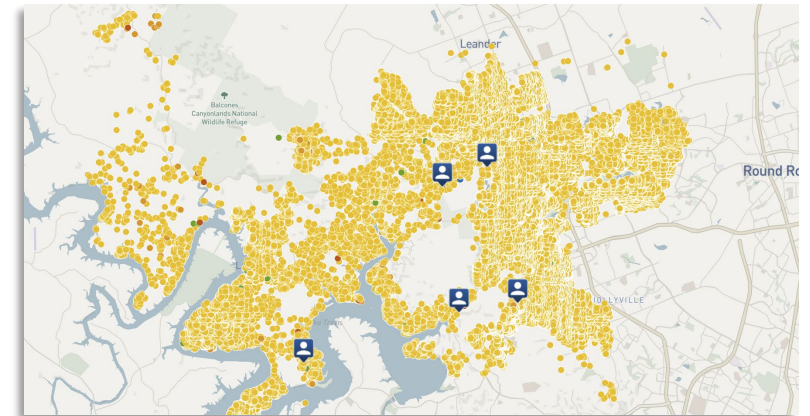
Kyle Exchanges:

- Placed: 13,480
- Remaining: 39,182

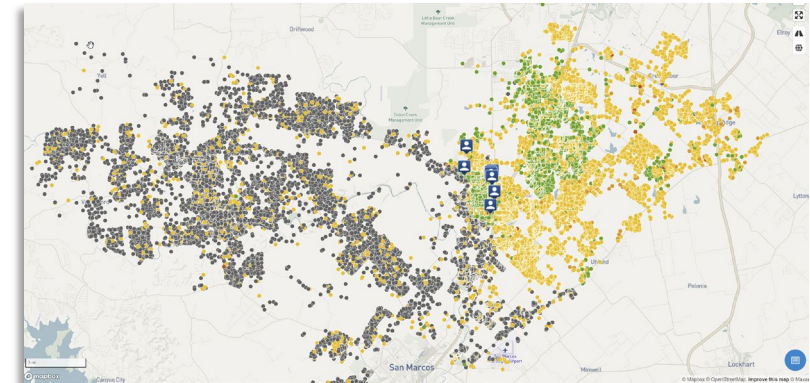
Correspondence Completed (in Sep.):

- Letters: 16,400
- Emails: 12,320
- Calls: 3,938
- Texts: 9,542

Cedar Park Completions



Kyle Planning

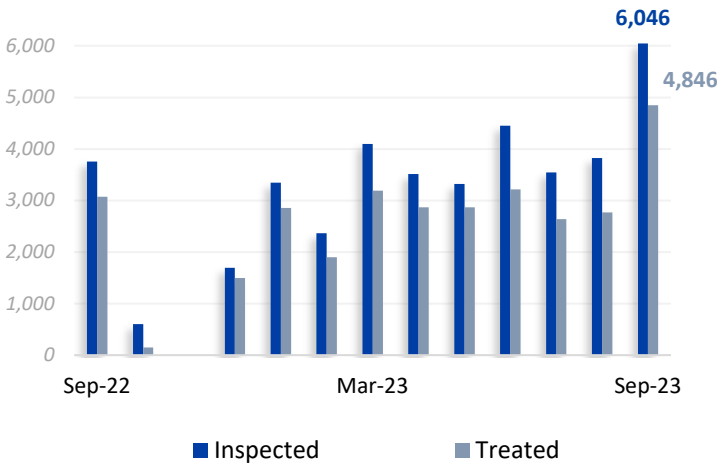


Distribution Maintenance

Pole Testing & Treatment (PTT)

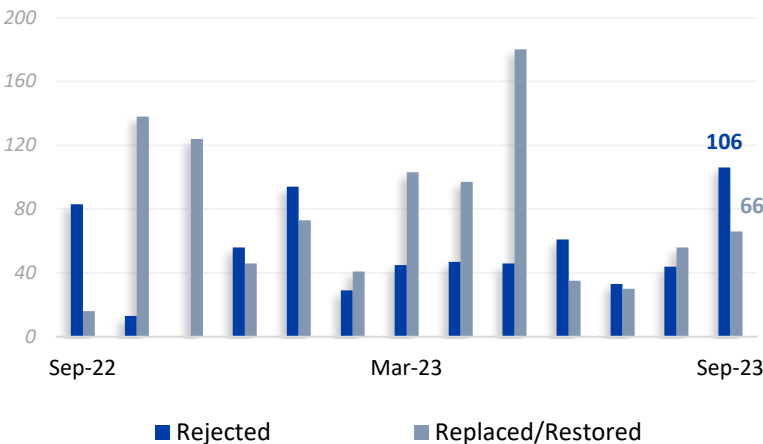
Poles Inspected & Treated

2022 YTD: Inspections - 34,740 Treated - 27,785
2023 YTD: Inspections - 34,502 Treated - 27,154



Poles Rejected & Replaced/Restored

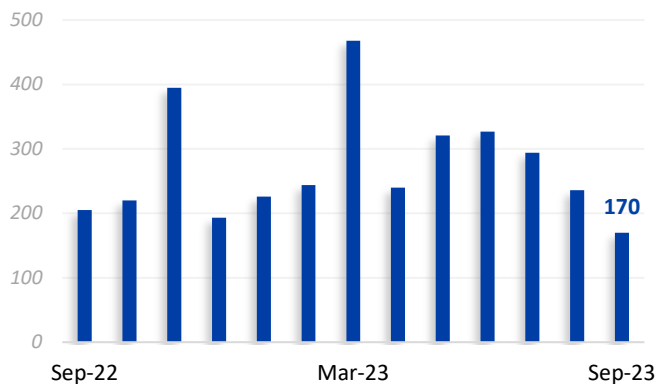
2022 YTD: Rejected - 590, Restored - 375
2023 YTD: Rejected - 505, Restored - 681



Underground Equipment

URD Pad Restorations

2022 YTD: Restorations - 1,895
2023 YTD: Restorations - 2,526



Vegetation Management

LiDAR Assessment Audits Completed:

Type	Jan	Feb	Mar	Apr	May	Jun	Jul	Aug	Sep
C&D WUI 3 Phase	50	239	453	841	134	46	15	10	8
C&D WUI 1 Phase	333	330	1,241	761	1,392	1,011	581	993	877
C&D Other 3 Phase	48	28	109	121	207	250	143	195	179
C&D Other 1 Phase	362	161	95	233	860	604	532	763	517
All C&D	793	758	1,898	1,956	2,595	1,920	1,271	1,962	1,582



Distribution Maintenance

Vegetation Maintenance

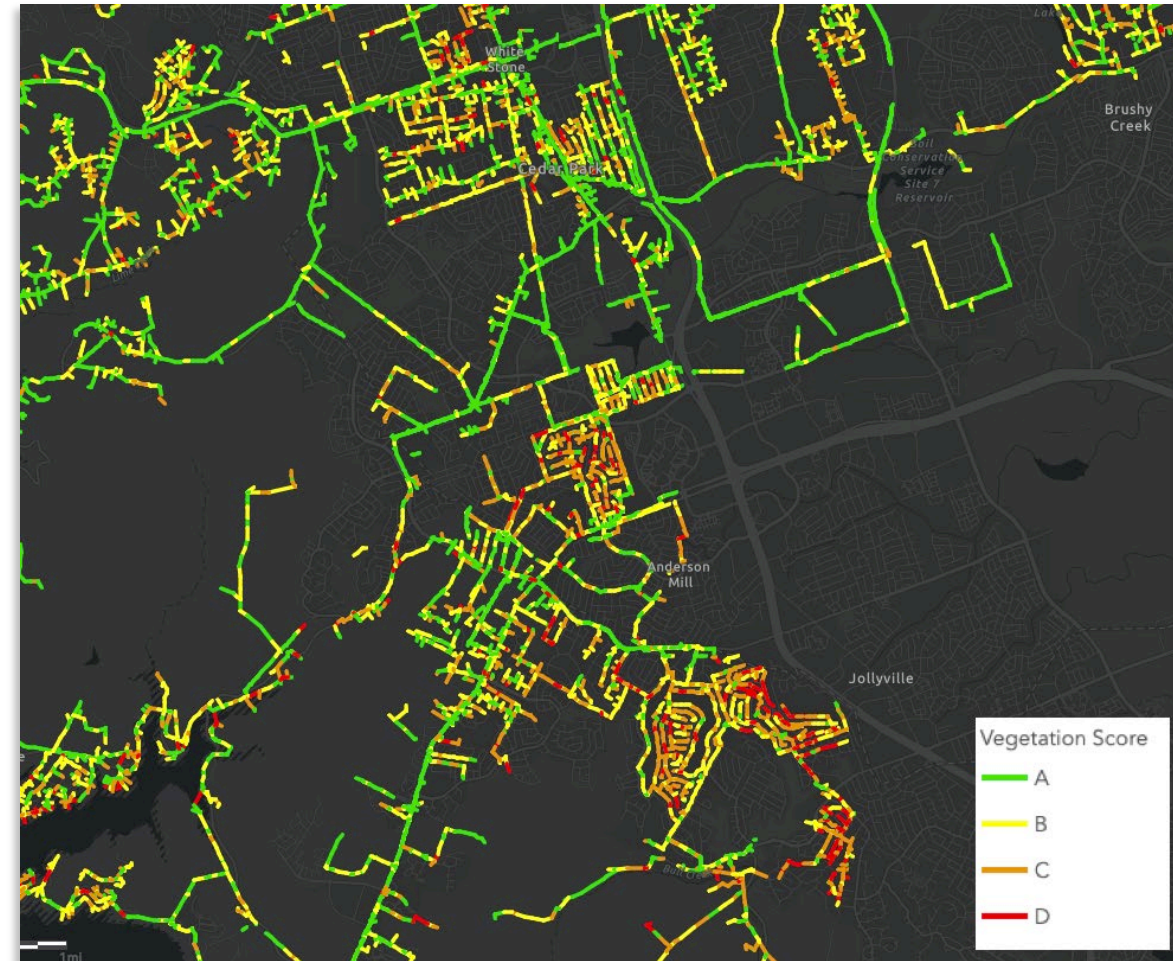
- From PEC's LiDAR assessments, all critical C&D rated feeders are scheduled for completion by year-end 2023.
- Over 29K locations were identified in PEC's 2021 scan.

Critical Locations Completed in 2023

Type	Completions	%	Remaining
C&D 3-Phase	1,796	99%	12
C&D Single-Phase	7,519	70%	4,027

Non-Critical Locations Completed in 2023

Type	Completions	%	Remaining
C&D 3-Phase	1,280	65%	769
C&D Single-Phase	4,127	41%	7,899

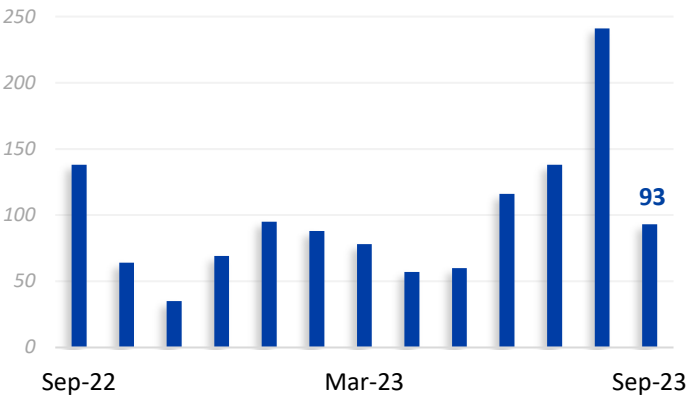


Distribution Maintenance

Technical Services

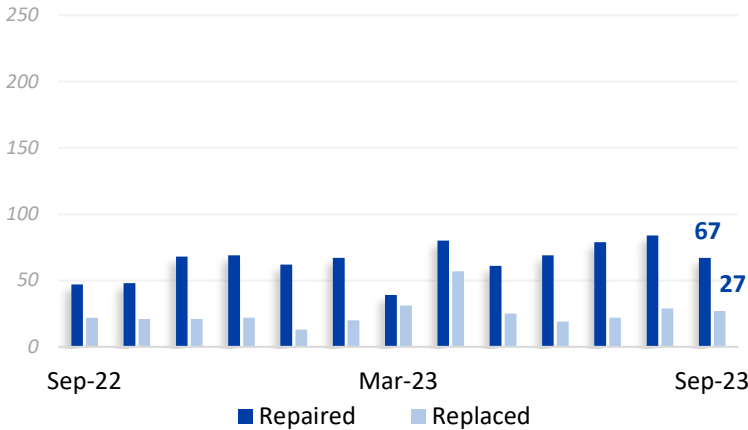
Equipment Inspections

2022 YTD: 1,108
2023 YTD: 966



Equipment Repaired & Replaced

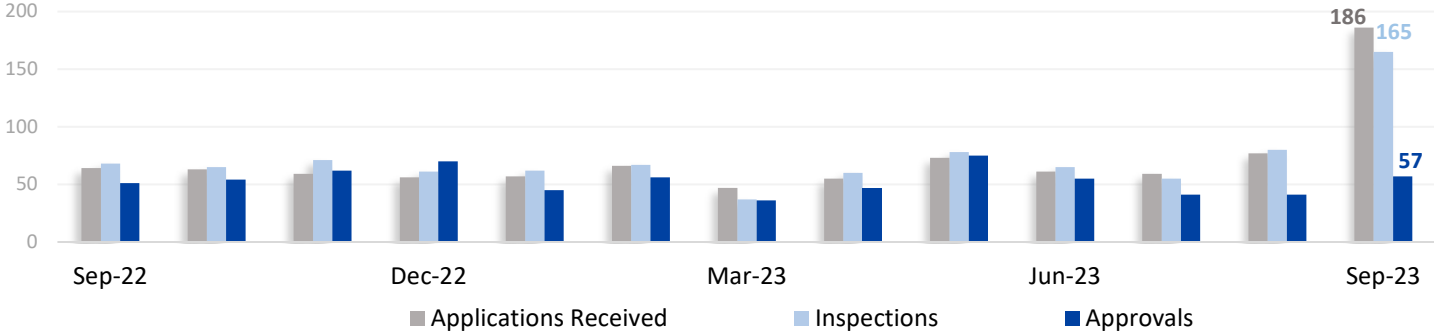
2022 YTD: Repaired - 641, Replaced - 211
2023 YTD: Repaired - 608, Replaced - 243



Pole Contacts

Applications Received & Permits Issued

2022 YTD: Received - 570, Inspected - 591, Approved - 512
2023 YTD: Received - 681, Inspected - 669, Approved - 452



Large Crane Pole Changeout

SW 150 Pole Project in Cedar Park





September 2023 Financial Report

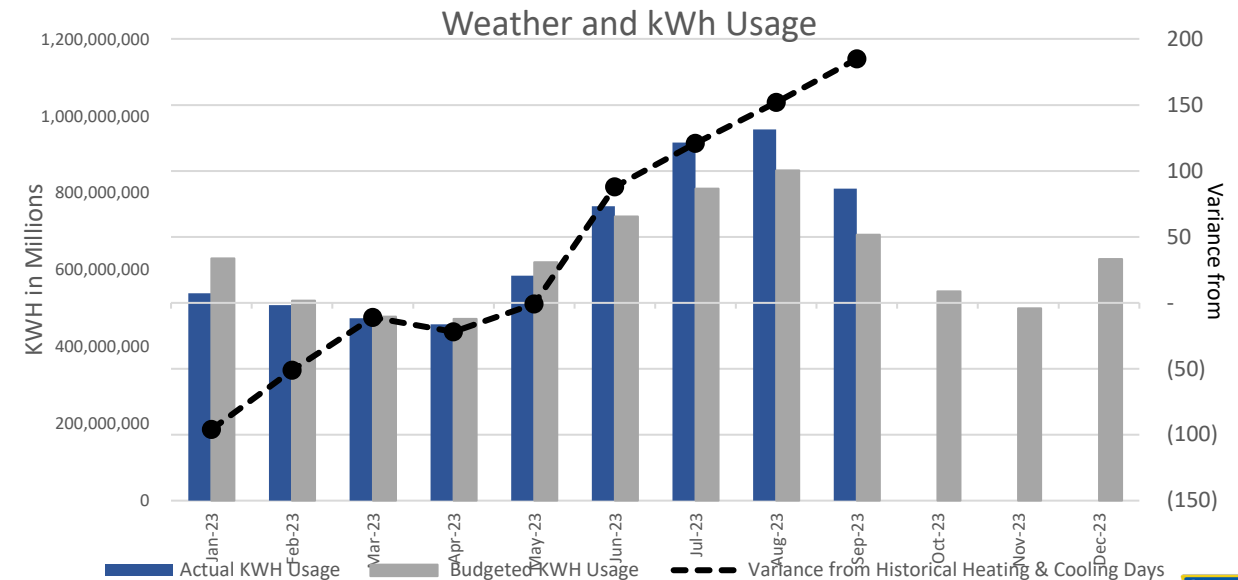
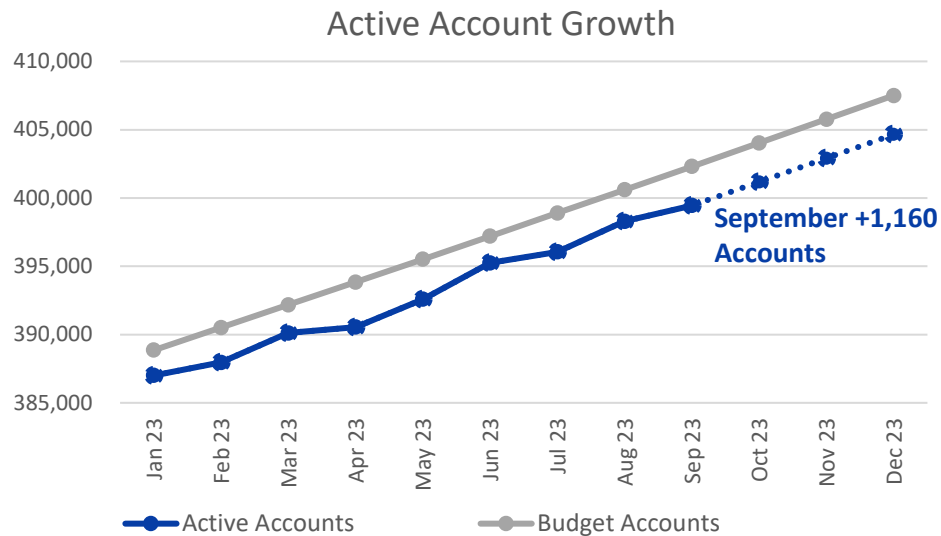
Randy Kruger | Chief Financial Officer

3. Financial Report

Finance at a Glance – September 2023

	MTD (\$ in millions)			YTD (\$ in millions)		
	Actual	Budget	Variance	Actual	Budget	Variance
MWH Sold	811,148	691,264	119,884	6,037,298	5,819,337	217,961
Gross Margins	\$ 36.8	\$ 31.7	\$ 5.1	\$ 284.8	\$ 270.8	\$ 14.0
Net Margins	\$ 13.1	\$ 6.2	\$ 6.9	\$ 56.4	\$ 20.7	\$ 35.7
EBIDA	\$ 23.9	\$ 18.4	\$ 5.5	\$ 154.7	\$ 137.4	\$ 17.3
Revenue O/(U)	\$ (25.1)	\$ 1.5	\$ (26.6)	\$ 3.5	\$ 15.8	\$ (12.3)
EBIDA(X)	\$ (1.2)	\$ 19.8	\$ (21.0)	\$ 158.2	\$ 153.2	\$ 5.0

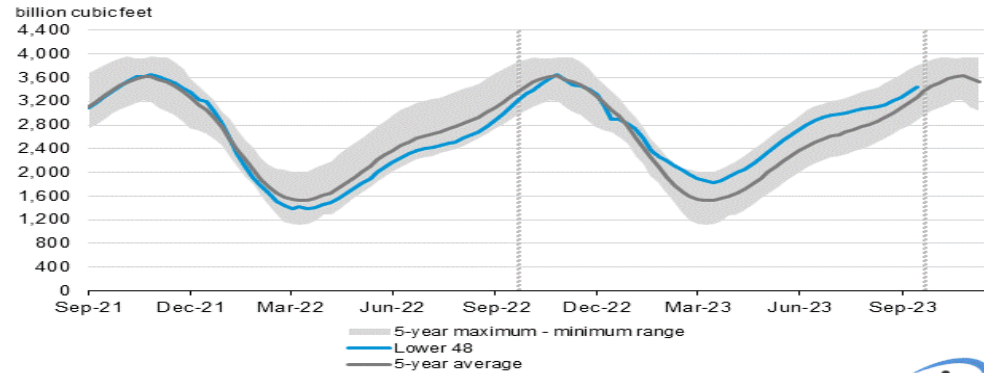
	Liquidity Coverage
Cash & Marketable Securities	\$ 15,889,256
Short Term Facilities	505,000,000
Less: Short Term Borrowings	44,926,438
Available Liquidity	\$ 475,962,818
Liquidity Coverage (Days)	244



3. Financial Report

Power Market Fundamentals

Working gas in underground storage compared with the 5-year maximum and minimum



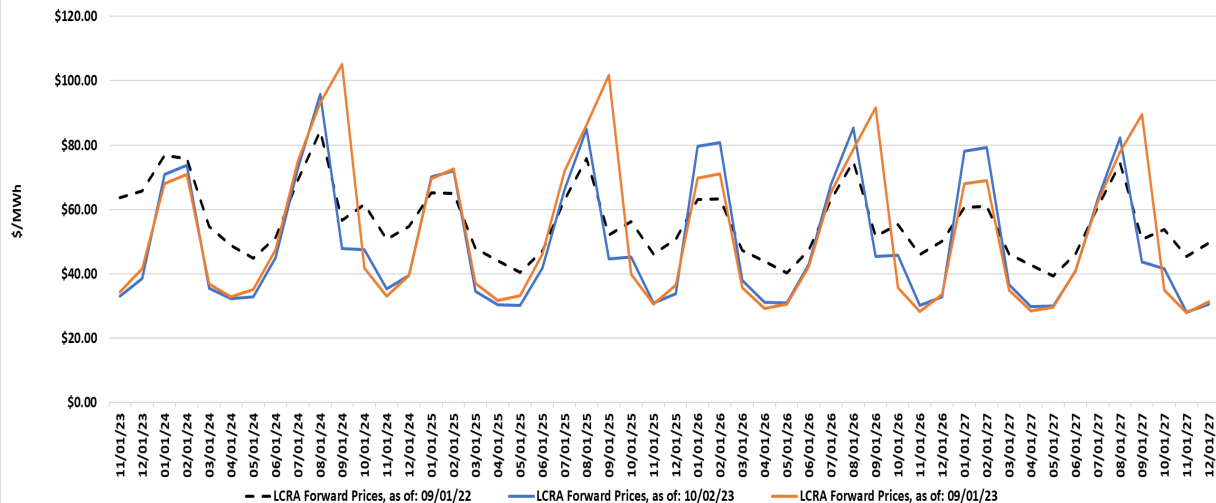
Data source: U.S. Energy Information Administration

Note: The shaded area indicates the range between the historical minimum and maximum values for the weekly series from 2018 through 2022. The dashed vertical lines indicate current and year-ago weekly periods.

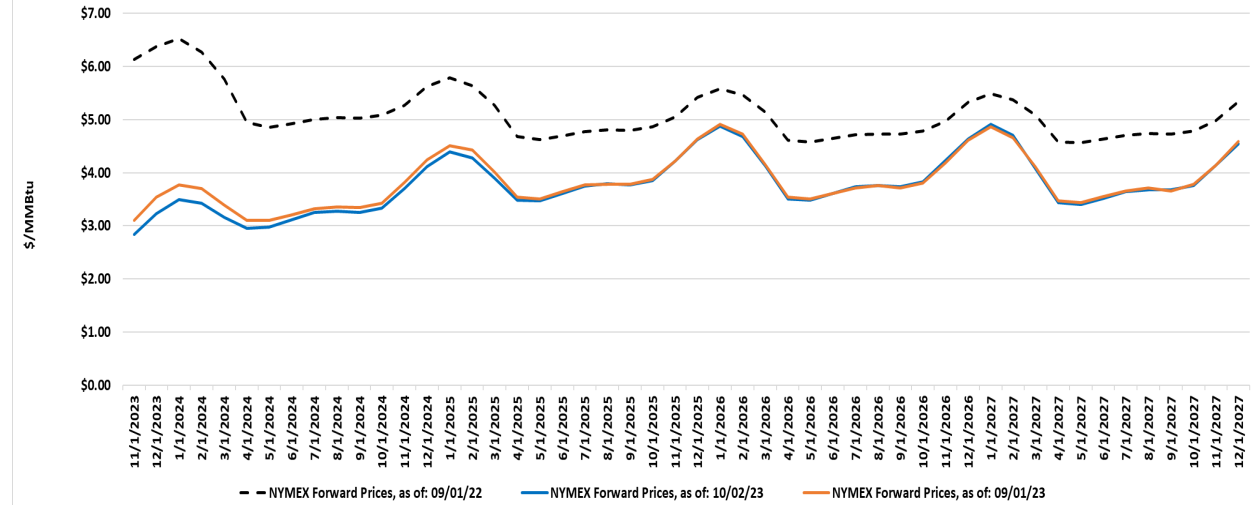


As of October 5

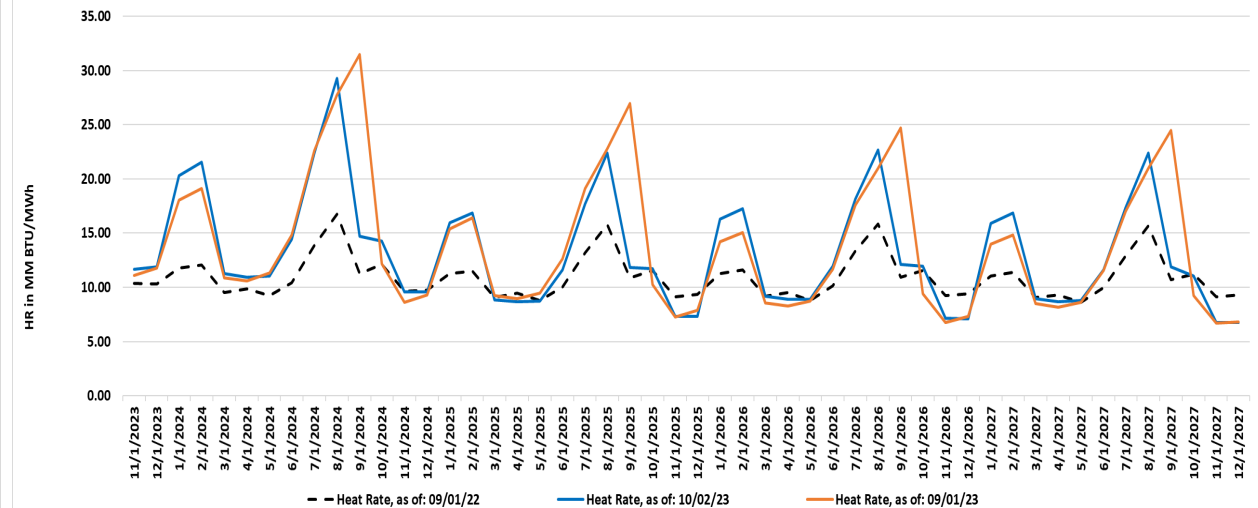
Power Forward Prices



Natural Gas Forward Prices



Forward Heat Rates



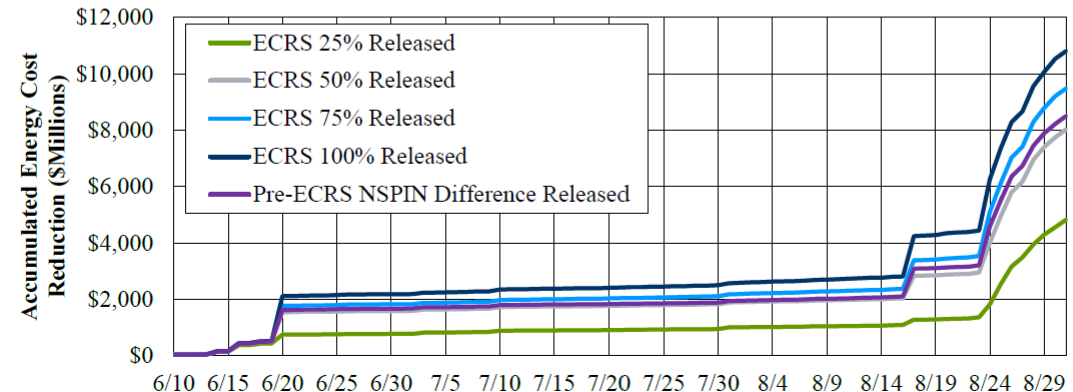
ERCOT Contingency Reserve Service

- June 10 ERCOT implemented ERCOT Contingency Reserve Service (ECRS) to provide more reserve capacity to cope with variability in intermittent renewables.
- The ERCOT IMM estimates ECRS to have raised real-time market energy value by approximately \$8 to \$10 billion between June 10 and August 31.
- Reserve Procurement increases for June - 3 p.m. to 8 p.m. hours:
 - 81% more reserve capacity procured in June 2022 than June 2020
 - After June 10, 2023, reserve procurement increased 22.5% more than the preceding month.
- These reserves do not appear as available to ERCOT's market price calculation algorithms which raises both energy and congestion costs.
- The IMM is recommending ERCOT conduct a holistic review of ancillary services.

Simulated Energy Cost Increases from Higher Online Reserve Procurements: June 10 - August 31, 2023

ERCOT's increase in online reserve procurements with the introduction of ECRS likely raised real-time market energy value by ~\$8-10 billion in three months. Additional costs continue to accumulate, notably in early September.

	25% Released	50% Released	75% Released	100% Released	Pre-ECRS NSPIN Difference Released
June	-\$774,345,448	-\$1,587,969,782	-\$1,823,128,056	-\$2,183,715,958	-\$1,670,295,524
July	-\$230,429,049	-\$303,797,235	-\$356,456,936	-\$388,845,385	-\$272,166,972
August	-\$3,818,750,565	-\$6,132,111,308	-\$7,303,871,948	-\$8,236,831,344	-\$6,557,867,403
Total	-\$4,823,525,063	-\$8,023,878,324	-\$9,483,456,940	-\$10,809,392,687	-\$8,500,329,899



© 2023 Potomac Economics

-9-

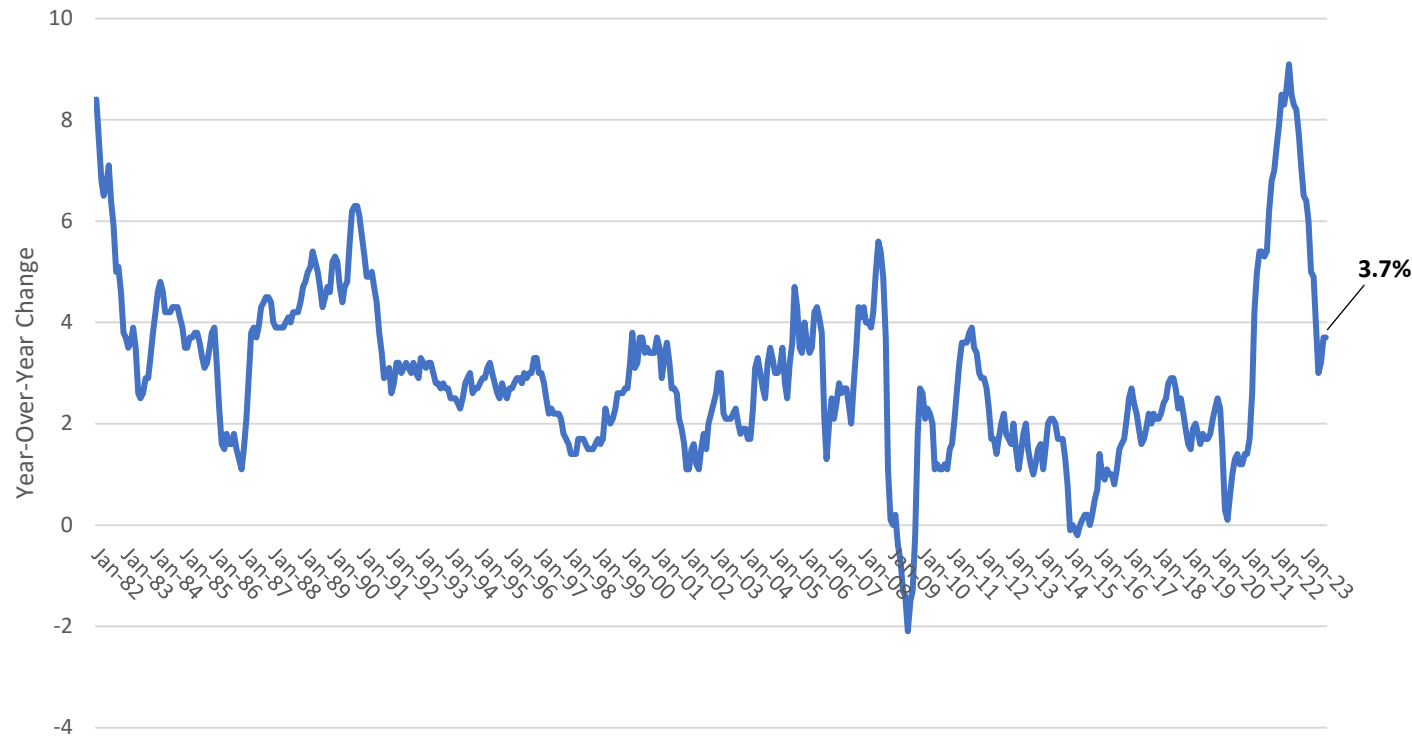
POTOMAC
ECONOMICS

Source: Potomac Economics' IMM office for ERCOT presentation to Sept. 22 meeting of ERCOT's Wholesale Market Working Group

Inflation

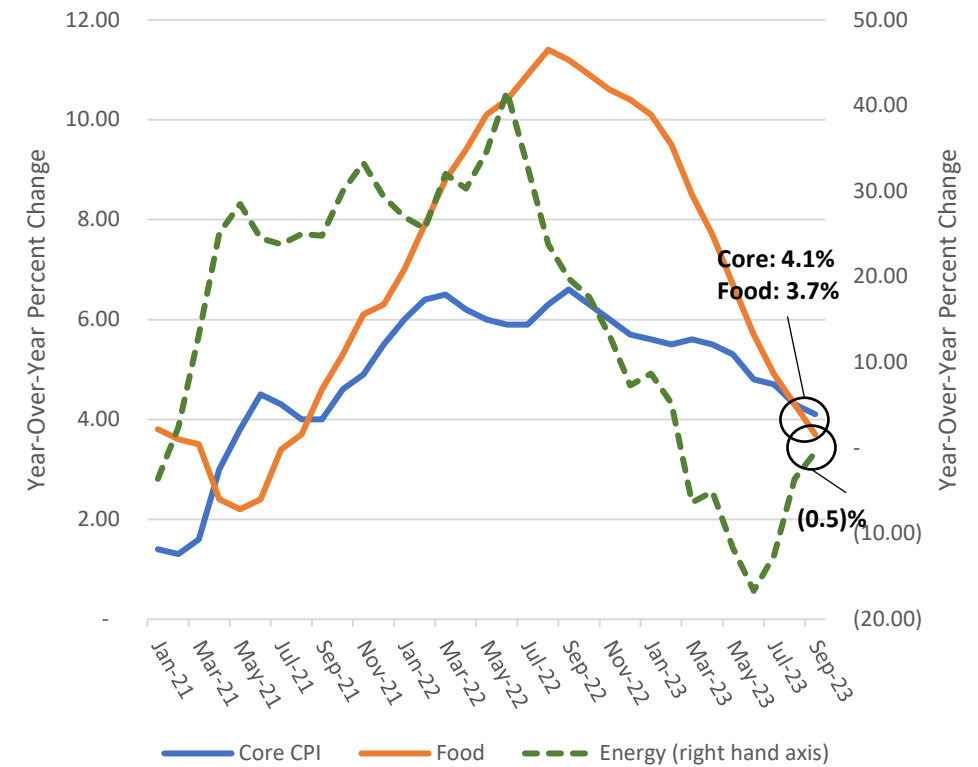
Overall CPI remains constant at 3.7%; Core CPI has dropped below the previous range of 4.3% to 4.1%; Energy prices recovered in September but remain down 0.5% YoY driven by fuel oil (-5.1%) and utility gas services (-19.9%) offset by gasoline (+3.0%) and sustained increases to electricity (+2.6%) prices

CPI Jan 1982 to September 2023



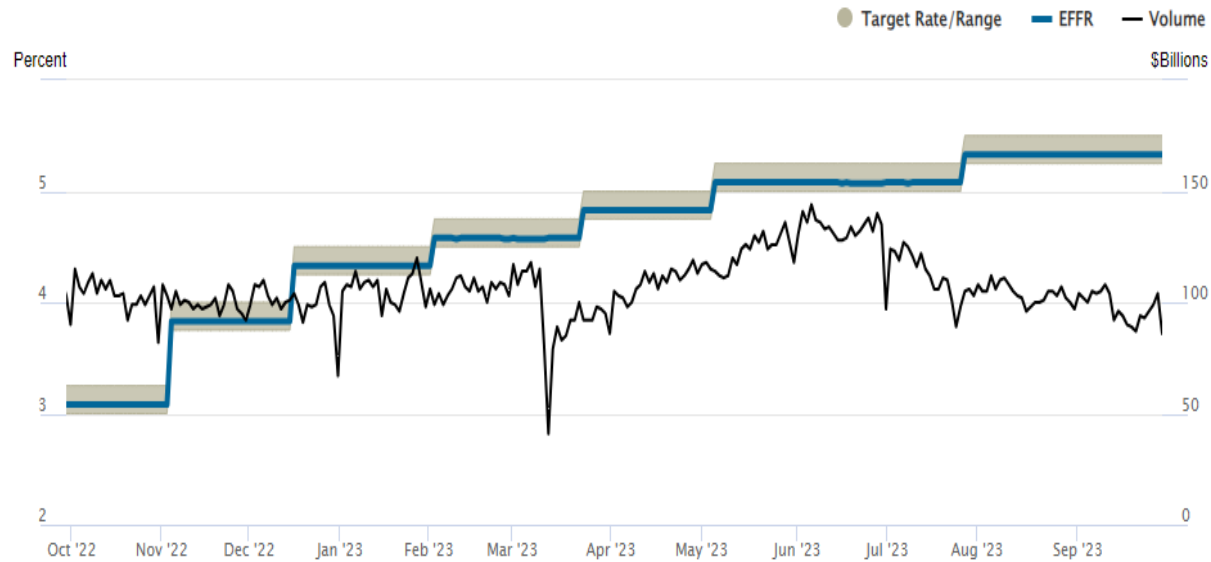
Source: U.S. Bureau of Labor Statistics

Core CPI, Food and Energy
Jan 2021 to September 2023



Source: U.S. Bureau of Labor Statistics

Federal Funds Rate



Source: Federal Reserve Bank of New York 10/02/2023

10-Year Note



Source: The Wall Street Journal 10/02/2023



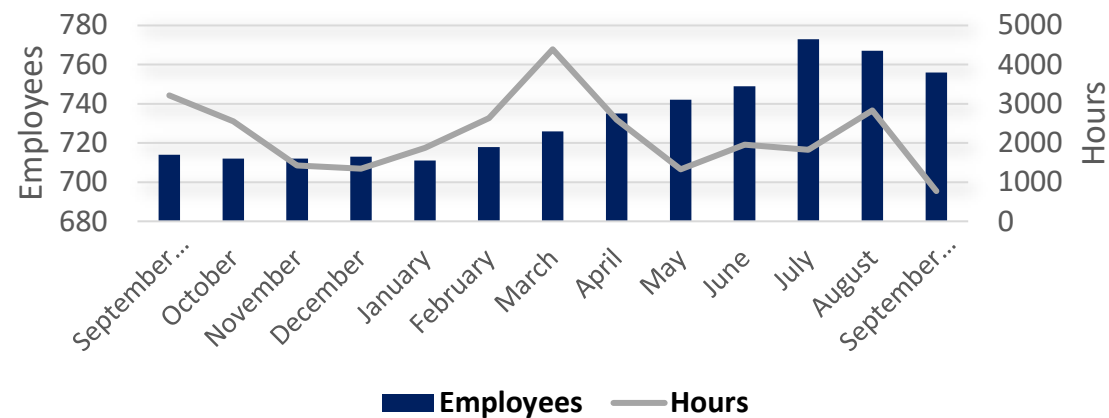
Workforce and Governance Report

Don Ballard | General Counsel

September Employee Development

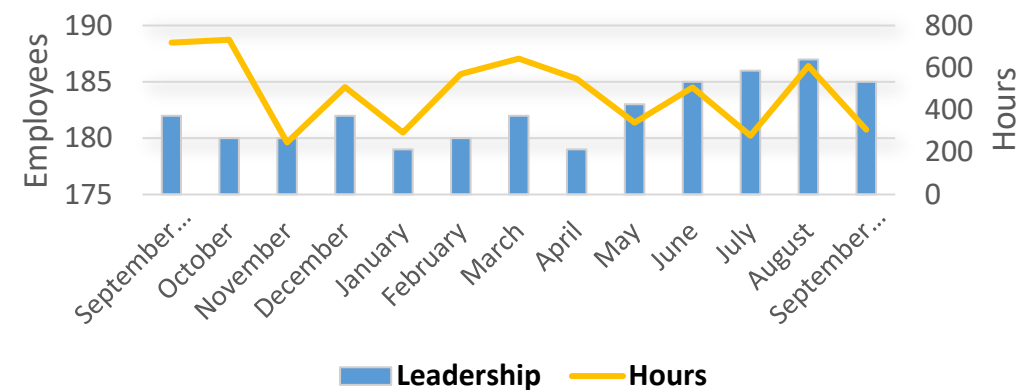
Employee Training

Hours for employees and leadership overall by month



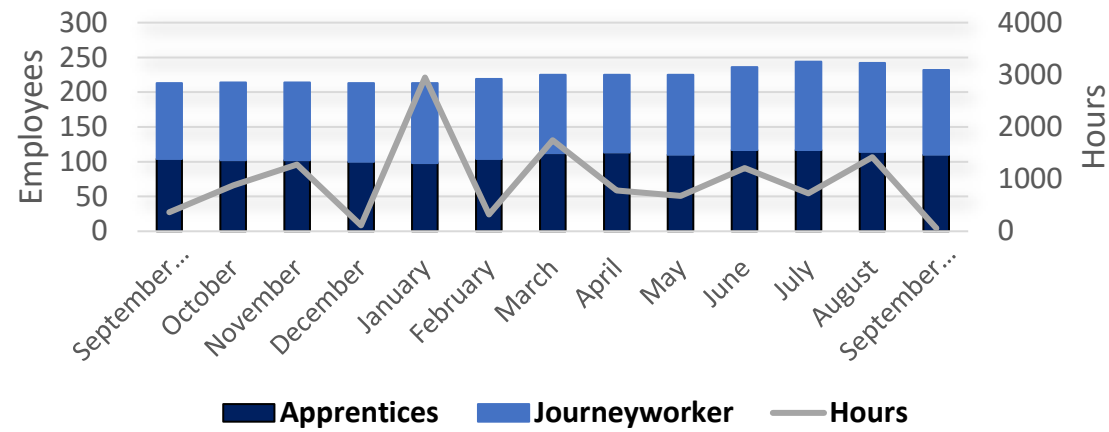
Leadership Training

Hours for employees and leadership overall by month



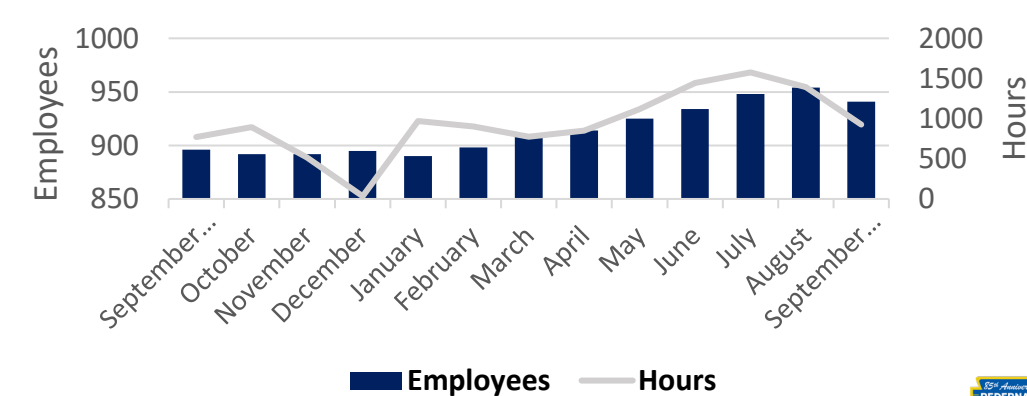
Apprentices & Journeyworker Training Hours

Hours trained for Apprentices & Journeyworkers per month



Safety Training Hours

Safety training hours per month



Employee Development Spotlight



Blake Jackson

Blake is a Lineworker Apprentice 4 from Liberty Hill and is part of the inaugural class that has gone through all four years of the apprenticeship program administered at the Safety and Technical Training Center. During his recent class, Blake actively encouraged others and engaged in constructive discussions around crew leadership and equipment operation. Blake delivered a strong presentation and will help drive the culture of change with his leadership and willingness to help others.



Shane Powers

Shane is a Lineworker Apprentice 3 from Junction, and he joined the apprenticeship program as a Year 3 apprentice with outside experience as a contractor. During class, Shane has helped demonstrate to his peers proper work technique and shared personal experiences regarding troubleshooting. Shane has been a great example of being patient and willing to work with others to complete all the tasks asked of him.

October is Cybersecurity Awareness Month

PEC is committed to keeping our employees, members, and infrastructure safe

- Routine internal scam and phishing exercises
- Required security training
- Dedicated team to mitigate and respond to issues



PEC Set to Participate in GridEx

- NERC's Electricity Information Sharing and Analysis Center (E-ISAC) is hosting the seventh biennial grid security and resilience exercise, GridEx
- Largest grid security event in North America
- Gives E-ISAC member and partner organizations a forum to practice how they would respond to and recover from coordinated cyber and physical security threats and incidents
- PEC is participating November 14-15



PEC Visits TEEX Lineworker Academy



- The Technical Training team, HR, and our Community Relations team recently visited the TEEX Lineworker Academy in College Station
- Technical Training Manager Josh Hanawalt provided keynote speech to trainees
- Shared PEC opportunities with trainees and discussed our training programs



Community and Member Engagement

JP Urban EVP, External Relations

PEC Communities Benefit from Partnership

More than \$53,000 in CDPP Support



Commemorative
Air Force—
Central Texas
Wing

\$8,800 to
replace 55
mercury vapor
lights with
energy-saving
LED lights

Round
Mountain
Volunteer
Fire Dept.

\$24,750 to
purchase
personal
protective
equipment and
portable radios

North Hays Co.
Emergency
Services
District #1

\$19,800 to
replace two
aging chest
compression
devices used
during CPR

New Work Environments for Member Relations



- Member Relations has successfully rolled out a new hybrid schedule for agents
- Currently, 30 agents are rotating between home and a PEC office
- Proven extremely valuable as we were able to quickly activate staff remotely during August and September's ERCOT events and tight grid conditions

5. Member and
Community
Engagement

Employees Bake Their Best for 85th Anniversary



85 Years and Celebrating with Members!

- Celebrating 85th Anniversary with elder members across the cooperative
- Events include live music, dancing, games, and cake and ice cream
- Identifying elder members to interview for PEC's history



Don't Let Energy Vampires Haunt Your Bill

- This month, PEC is launching a spooktacular new communications campaign just in time for Halloween
- Highlighting energy vampires, the video gives tips and tricks to help members save electricity and money every month





Appreciation and Look Ahead

Employee Kudos*



Angela Fry
Member Relations
Agent
Marble Falls



Clarissa Torres
Member Relations
Analyst
Kyle



Nick Wall
Journeyworker
Marble Falls



Brandon Culton
Journeyworker
Marble Falls



**Rachel
Rodriguez**
Member Relations
Analyst
Canyon Lake

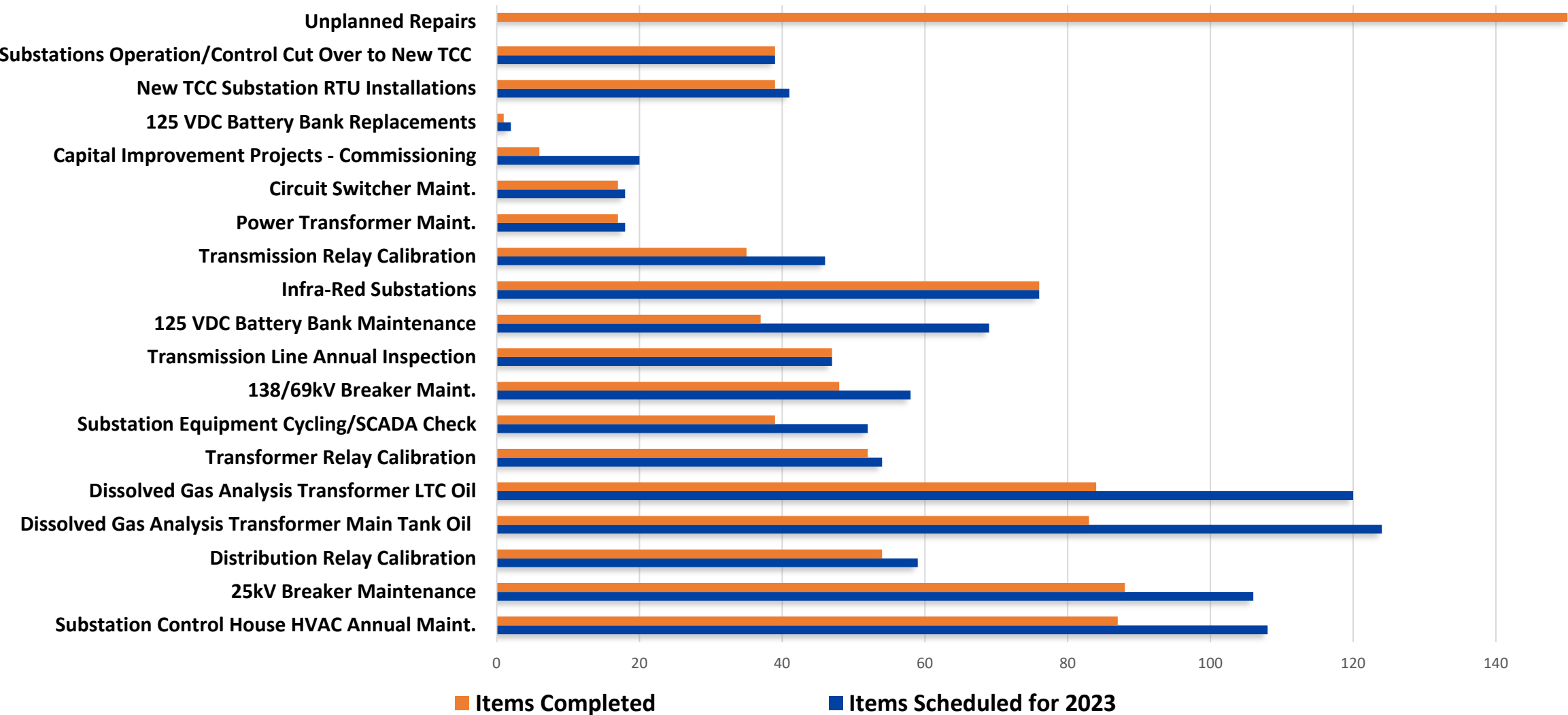
**These were selected from the hundreds of kudos PEC receives each month*



Appendix Pages From Operations and Financials Reports

Substation & Transmission Maintenance

2023 Itemized Maintenance By Equipment



Planning Engineering Projects

Overall Status

Project	Completion Date	Percent Complete
Load Projections Study	Jan 2023	100%
2023 CIP Project Maps	Feb 2023	100%
Capacitor Settings	Mar 2023	100%
4CP Study	Apr 2023	100%
Summer Contingency	May 2023	100%
20 Year Plan	Jun 2023	100%
UFLS Study	Jun 2023	100%
CIP (1st draft) Study	Jul 2023	100%
CIP Final Study	Sep 2023	90%
Mock UFLS Study	Dec 2023	0%
Winter Contingency	Dec 2023	0%
2 Year System Protection Coordination Review	Dec 2023	75%
PEC System Arc Flash Study	Feb 2024	50%

Substation Engineering Projects

District	Phase		Start Date	Completion Date	Percent Complete
Cedar Park	Construction	Upgrade bus to double-bus double-breaker	Apr-21	Apr-23	100%
Oak Hill	Construction	Upgrade line protection relay panels	Apr-21	May-24	81%
Junction	Construction	Upgrade transformer and add line breakers	May-21	Oct-23	89%
All Districts	Construction	Upgrade circuit switches and relay protection on three mobile substations	Nov-21	Jun-23	72%
Liberty Hill	Construction	Construct new substation	Dec-21	Dec-23	88%
Liberty Hill	Construction	Add third power transformer	Apr-22	Aug-23	90%
Kyle	Construction	Add third power transformer	May-22	Jul-23	90%
Bertram	Construction	Upgrade power transformer	Jun-22	Sep-23	89%
Cedar Park	Construction	Make improvements to ground grid for reliability	Aug-22	Apr-23	100%
All Districts	Engineering	Develop transmission protection philosophy for protective settings	Jan-23	Sep-23	81%
All Districts	Engineering	Develop configuration for engineering to have access to RTU settings	Nov-22	Dec-23	25%
Oak Hill	Engineering	Upgrade two power transformers	Feb-23	Jan-25	32%
Liberty Hill	Engineering	Upgrade power transformer	Feb-23	May-24	50%
Cedar Park	Engineering	Add third power transformer	Feb-23	Nov-24	30%
Kyle	Engineering	Construct new substation	Feb-23	Nov-24	38%
Liberty Hill	Engineering	Construct new substation	Feb-23	Nov-24	37%
Oak Hill	Engineering	Add feeder breaker and feeder	Mar-23	Nov-23	88%
Oak Hill	Engineering	Add feeder	Mar-23	Nov-23	88%
Bertram	Engineering	Add circuit switcher on power transformer	Mar-23	Dec-23	34%
Kyle/Canyon	Engineering	Add substation capacitor	May-23	May-24	41%
Liberty Hill	Engineering	Add substation capacitor	May-23	May-24	41%
Liberty Hill	Engineering	Add second power transformer	Aug-23	Dec-24	10%

Transmission Projects

Overall Status

District	Phase	Description	Completion Date	Percent Complete
Canyon Lake	Complete	Increase clearance to meet USACE requirements	Dec 2022	100%
Marble Falls and Cedar Park	Complete	Reconductor (Phase 1)	Feb 2023	100%
Oak Hill	Complete	Harden transmission line to meet severe weather requirements	Mar 2023	100%
Kyle	Closeout	Harden transmission line to meet severe weather requirements	May 2023	99%
Junction	Engineering	Extend tap to new substation bay	Dec 2023	30%
Liberty Hill	Construction	Harden transmission line to meet severe weather requirements	Dec 2023	65%
Liberty Hill	Construction	Add Fiber to existing transmission line	Dec 2023	50%
Liberty Hill	Procurement	Developer funded transmission line relocation	May 2024	30%
Liberty Hill	Construction	Harden transmission line to meet severe weather requirements	May 2024	60%
Marble Falls and Cedar Park	Procurement	Overhaul (Phase 2)	May 2024	55%
Kyle	Engineering	Transmission line overhaul	Jan 2025	25%
Oak Hill	Procurement	Harden transmission line to meet severe weather requirements	May 2025	40%
Cedar Park	Engineering	Harden transmission line to meet severe weather requirements	May 2025	40%

Large Project Updates

Cedar Park

Construction for additional bathrooms underway. Expected completion in December.

Johnson City

Developing a master plan for the Haley Rd site. Fencing of new property lines complete. Drainage design in progress. Contract awarded for 7,000 sq. ft. facilities storage building; permit submitted to the city.

Junction

Fuel Island, generator, oil containment pad, power upgrade to complete in October. Engaging architect & engineers for site work, fencing, new entrance, etc.

Oak Hill Contact Center

Design and demo completed with construction underway. Targeted completion in January 2024.

Marble Falls

Parameter fence designed and RFP released. Furniture for Contact Center changes on order, expected to install early October.

Oak Hill Fuel Island

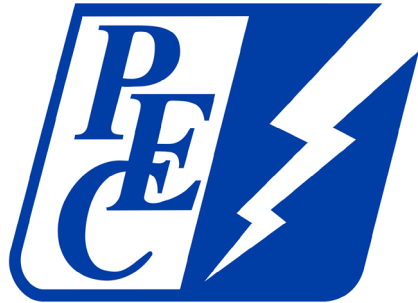
Slab poured, canopy on order, fuel equipment on order. Completion in December.



Facility Management Metrics

PEC Facilities staff complete approx. 400 orders/mo.

	Goal	2023 YTD	2022
Avg Response Time	< 1 day	.27 days	.54 days
Completed On-Time	> 90%	84%	79%
Proactive Work Orders	> 80%	95%	85%
Satisfaction Rating	> 95%	97.9%	100%



Appendix to September 2023 Financial Presentation to the Board

Randy Kruger | Chief Financial Officer

3. Financial Report

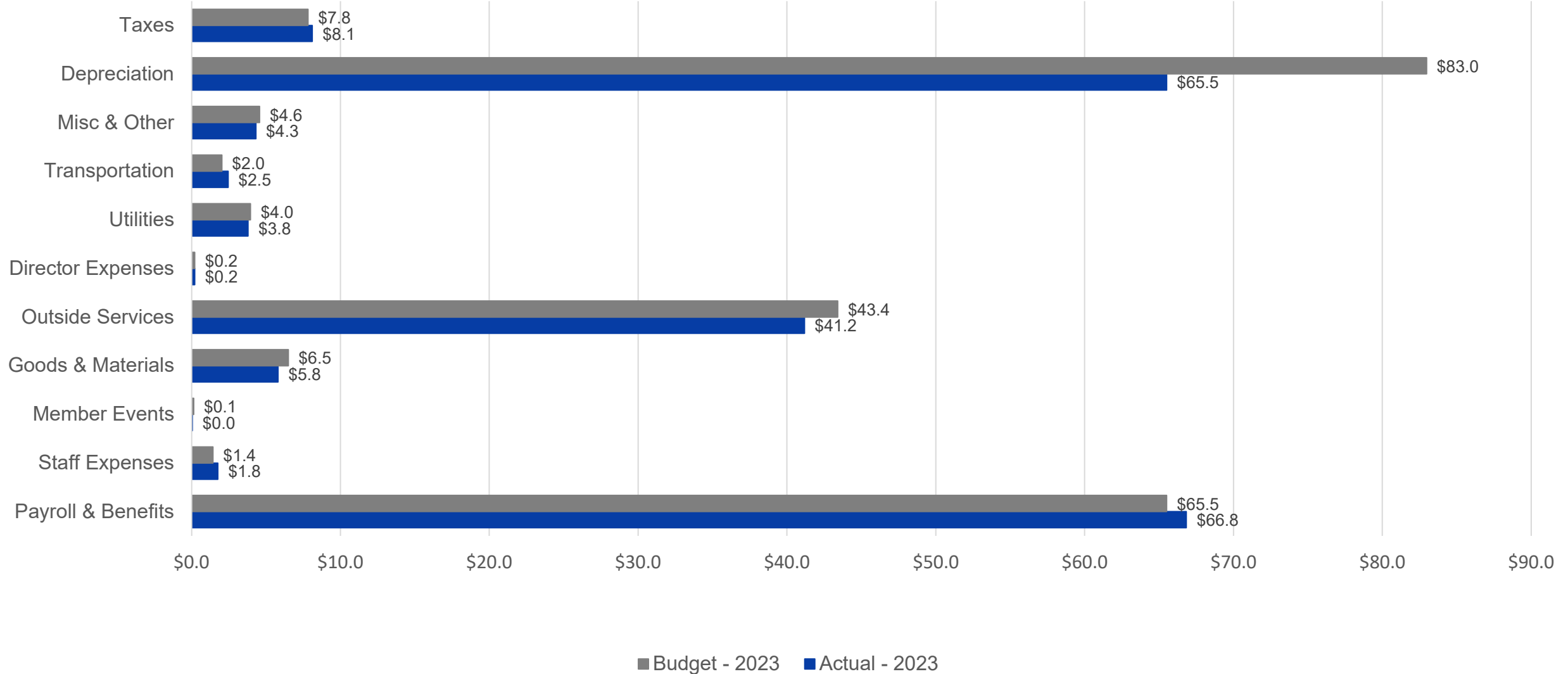
Financial Performance

	MTD			YTD			Annual	2022 to 2023 % Change
	Actual	Budget	Prior Year	Actual	Budget	Prior Year	Budget	
Gross Margins	\$ 36,837,256	\$ 31,721,137	\$ 30,836,129	\$ 284,765,498	\$ 270,801,614	\$ 266,862,686	\$ 352,088,225	6.71%
Operating Expenses Ex. Depreciation	14,219,881	14,618,197	14,533,408	134,534,388	135,588,271	112,168,980	178,635,500	19.94%
Depreciation	7,083,887	8,395,338	8,266,127	65,503,310	82,972,166	79,028,562	108,552,698	
Interest Expense	3,649,121	3,750,274	3,840,407	32,809,062	33,775,524	33,797,417	45,173,483	
Other Income	(1,237,587)	(1,260,047)	(1,285,987)	(4,473,801)	(2,195,974)	(5,932,114)	(5,371,928)	
Net Margins	\$ 13,121,954	\$ 6,217,375	\$ 5,482,174	\$ 56,392,539	\$ 20,661,627	\$ 47,799,841	\$ 25,098,473	
EBIDA	\$ 23,854,962	\$ 18,362,987	\$ 17,588,708	\$ 154,704,911	\$ 137,409,317	\$ 160,625,820	\$ 178,824,653	-3.69%
Over (Under) Collected Revenues	(25,051,487)	1,461,634	2,397,822	3,474,371	15,829,155	30,257,440	3,749,120	
EBIDA(X)	\$ (1,196,525)	\$ 19,824,621	\$ 19,986,530	\$ 158,179,282	\$ 153,238,472	\$ 190,883,260	\$ 182,573,772	
Total Long-Term Debt							\$ 1,114,322,192	
Debt Service							65,690,519	
Debt Service Coverage Ratio							2.96	
Equity as Percent of Assets							39.6%	
Net Plant in Service							\$ 1,985,228,388	
Capital Improvement Spend							\$ 209,863,100	
Energy Sales kWh	811,147,684	691,263,853	684,551,115	6,037,298,159	5,819,337,004	5,993,458,659	7,500,307,799	0.73%
Energy Purchases kWh	857,079,891	739,093,575	713,015,956	6,447,796,449	6,222,447,866	6,345,288,516	8,019,713,349	1.62%
Active Accounts				399,454	402,313	382,457	407,506	4.44%

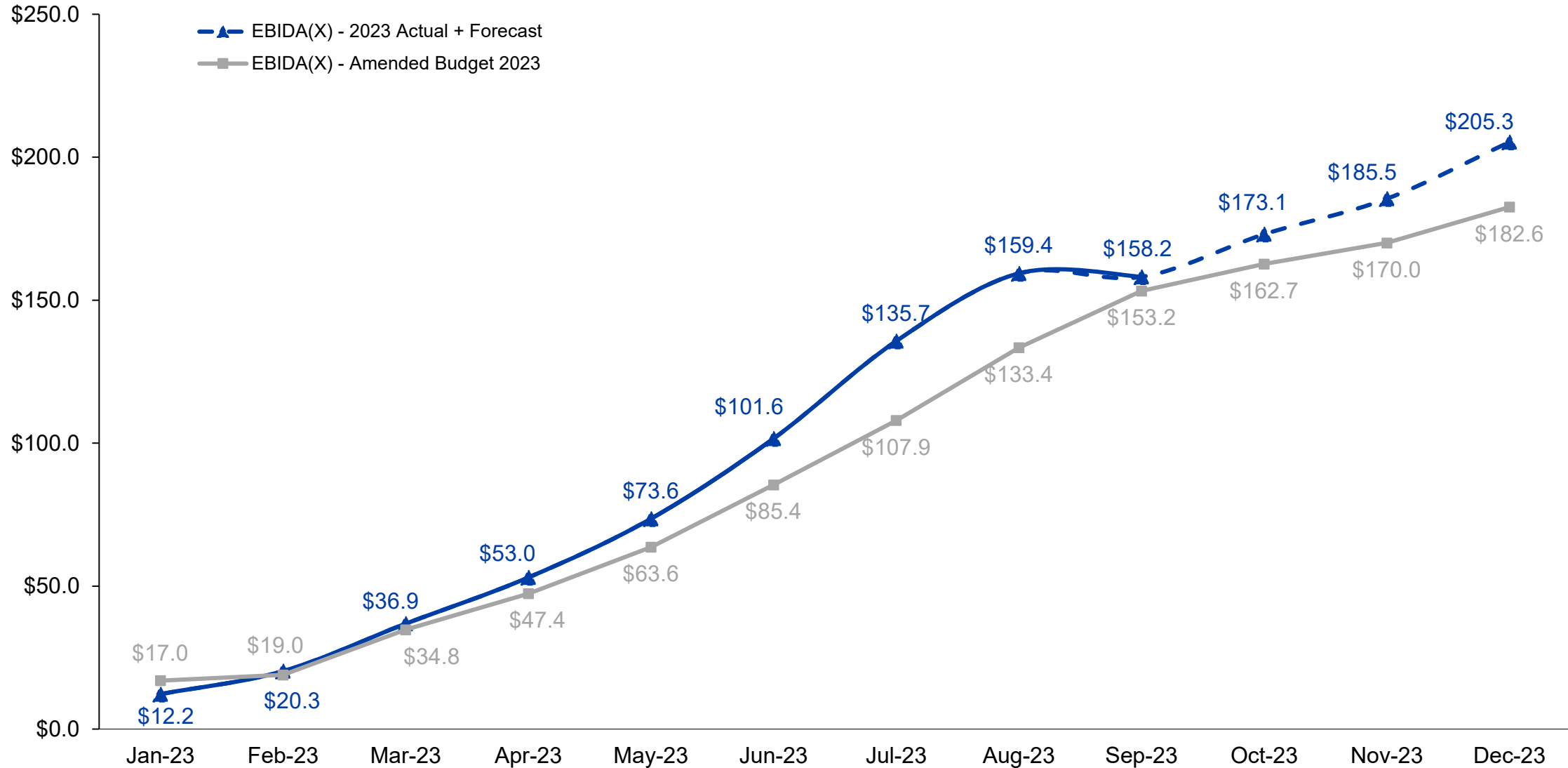
3. Financial Report

Cost of Service (in millions)

YTD Actuals vs Amended Budget through September 2023



EBIDA(X) Year to Date (in millions)



CIP Spend

Construction Category & Description		YTD Actuals	YTD Budget	Variance (Over)/Under Budget	Annual Budget
<u>Distribution</u>					
100	New Lines (Line Extensions for new primary, secondary and service lines)	\$ 12,092,597	\$ -	\$ (12,092,597)	\$ -
200	Tie Lines (new construction between existing lines)	4,391,339	7,447,433	3,056,094	9,608,071
300	Conversions or Line Changes	16,254,503	20,580,719	4,326,217	27,514,015
600	Miscellaneous Distribution Equipment	41,127,967	45,662,391	4,534,424	58,775,582
700	Other Distribution Items	231,043	390,000	158,957	520,000
Distribution Total		\$ 74,097,449	\$ 74,080,543	\$ (16,906)	\$ 96,417,668
<u>Substation</u>					
400	New Substations, Switching Stations and Meter Points	\$ 11,951,426	\$ 17,575,695	\$ 5,624,269	\$ 20,798,652
500	Substations, Switching Stations and Meter Point changes	25,107,476	21,886,342	(3,221,135)	24,856,760
Substation Total		\$ 37,058,902	\$ 39,462,036	\$ 2,403,134	\$ 45,655,412
<u>Transmission</u>					
800	New Transmission Lines	\$ 685,988	\$ 1,507,229	\$ 821,241	\$ 2,030,593
1000	Line and Station Changes	7,404,016	8,757,039	1,353,023	19,698,276
Transmission Total		\$ 8,090,004	\$ 10,264,268	\$ 2,174,264	\$ 21,728,869
<u>General Plant</u>					
2000	Facilities	\$ 7,297,355	\$ 23,129,151	\$ 15,831,796	\$ 29,346,563
3000	Information Technology	1,954,770	6,262,239	4,307,469	7,776,588
4000	Tools & Equipment	165,134	349,248	184,114	438,000
5000	Vehicles	2,536,156	6,375,000	3,838,844	8,500,000
Total General Plant		\$ 11,953,415	\$ 36,115,638	\$ 24,162,224	\$ 46,061,151
Accrued WIP		\$ 5,554,711	\$ -	\$ (5,554,711)	\$ -
Total Capital Improvement Plan Spend		\$ 136,754,480	\$ 159,922,485	\$ 23,168,005	\$ 209,863,100

3. Financial Report

Multi-Year CIP Spend

Construction Category & Project (\$ in thousands)	Prior Years		YTD		Project		Project		Remaining	
	Spend		Actuals		Actuals Post		Budget		Budget	
					Approval					
<u>Distribution</u>										
JC make-ready - voltage conversion	\$	5,440.1	\$	4,399.0	\$	9,839.1	\$	12,546.0	\$	2,706.9
Fairland Make-ready Voltage Conversion		1,230.1		1,849.2		3,079.3		7,500.0		4,420.7
Convert Burnet to 24.9KV		2,191.4		1,187.6		3,379.0		5,000.0		1,621.0
Cranes Mill Conversion		766.6		2,353.0		3,119.5		3,800.0		680.5
Distribution Total	\$	9,628.1	\$	9,788.9	\$	19,417.0	\$	28,846.0	\$	9,429.0
<u>Substation</u>										
Junction - Upgrade T1 to 22.4 MVA	\$	1,069.8	\$	5,787.7	\$	6,857.5	\$	6,994.3	\$	136.8
Hero Way Construct new 46.7 MVA Subst		822.2		7,390.2		8,212.4		8,323.4		111.0
Florence Construct new 46.7 MVA Sub		-		119.5		119.5		7,179.7		7,060.2
Yarrington Construct new 46.7 MVA Subst		-		1,522.7		1,522.7		8,075.9		6,553.2
RR12-LaCima Construct 46.7 MVA Sub		-		28.3		28.3		7,337.6		7,309.3
New Site 2147 - Construct 46.7 MVA Sub		-		-		-		8,641.2		8,641.2
Dripping Springs Upg T1 & T2 to 46.7 MVA		-		28.5		28.5		5,257.1		5,228.6
Seward Junction Install 46.7 MVA Trf		327.8		4,210.0		4,537.8		3,289.5		(1,248.3)
Lehigh Install 46.7 MVA Trf		438.3		4,159.7		4,597.9		3,686.2		(911.8)
Pipeline Install 46.7 MVA Trf		-		18.9		18.9		3,778.3		3,759.4
Lago Vista Install 46.7 MVA Trf		-		149.7		149.7		8,858.7		8,708.9
SCADA RTU's		624.5		5,287.5		5,912.0		4,326.3		(1,585.7)
Substation Total	\$	3,282.6	\$	28,702.7	\$	31,985.3	\$	75,748.2	\$	43,762.9
<u>Transmission</u>										
T323 PF-MF Overhaul	\$	1,181.4	\$	930.5	\$	2,111.8	\$	10,976.6	\$	8,864.8
T327 LA-NL Overhaul		676.2		3,924.9		4,601.0		11,005.2		6,404.1
T324 ML-HT – Single Circuit		248.5		-		248.5		3,329.2		3,080.7
T380 BD-TV Overhaul		-		295.9		295.9		5,777.7		5,481.8
MF-TP (T315) Storm Hardening		6,533.2		1,536.2		8,069.3		8,525.5		456.2
North Hays County Wimberley Transmission		135.0		46.0		181.0		70,054.7		69,873.7
T623 TP-CV Storm Hardening		223.4		71.5		294.8		11,289.1		10,994.3
T333 LV to NL Overhaul		388.8		30.3		419.0		11,730.5		11,311.5
EMS Hardware Software		2,656.0		618.8		3,274.8		3,441.7		166.9
Transmission Total	\$	12,042.4	\$	7,453.8	\$	19,496.2	\$	136,130.1	\$	116,633.9
<u>General Plant</u>										
Transmission Control Center	\$	28,326.2	\$	3,122.2	\$	31,448.4	\$	32,500.0	\$	1,051.6
Spring Branch - Warehouse and Shop Build		-		-		-		11,837.0		11,837.0
Marble Falls Additional Property Fence & Improvements		42.4		21.5		63.9		5,025.4		4,961.5
Junction/Warehouse Yard Expansion		80.3		-		80.3		13,801.0		13,720.7
JC District Operations		-		1,719.0		1,719.0		8,861.1		7,142.1
Safety Tech Training Cntr Improvements		282.7		-		282.7		5,483.4		5,200.7
Total General Plant	\$	28,731.7	\$	4,862.7	\$	33,594.4	\$	77,507.9	\$	43,913.3



pec.coop