



Director District Revision and Member Balance

Don R. Richards

D. Daniel Gibson

Richards, Elder & Gibson, PLLC

May 21, 2018

PEC Bylaws

Article III, Section 1

- Requires seven (7) Director Districts which “equitably represent the Members.”
- The Board may revise Director Districts boundaries “based on equitable consideration determined by the Board; *i.e.*,
 - Number of Members
 - Investment
 - Geography, etc.
 - Communities of Interest
 - Generally follows:
 - Rivers, Roads, Railroads
 - Review growth trends on East / West basis

PEC Board Election Terms

DISTRICT	2017	2018	2019	2020
Cristi Clement (1)		X		
Emily Pataki (2)	X			X
Randy Klaus (3)	X			X
Jim Powers (4)			X	
James Oakley (5)			X	
Paul Graf (6)		X		
Amy Akers (7)		X		

PEC Membership

(May 4, 2018)

254,044

7 Districts = 36,292 average

10% variance acceptable
under “1-member – 1-vote” legal standard

As of May 4, 2018

PEC Membership -254,044
36,292 per district average

10% variance of average – 3,630

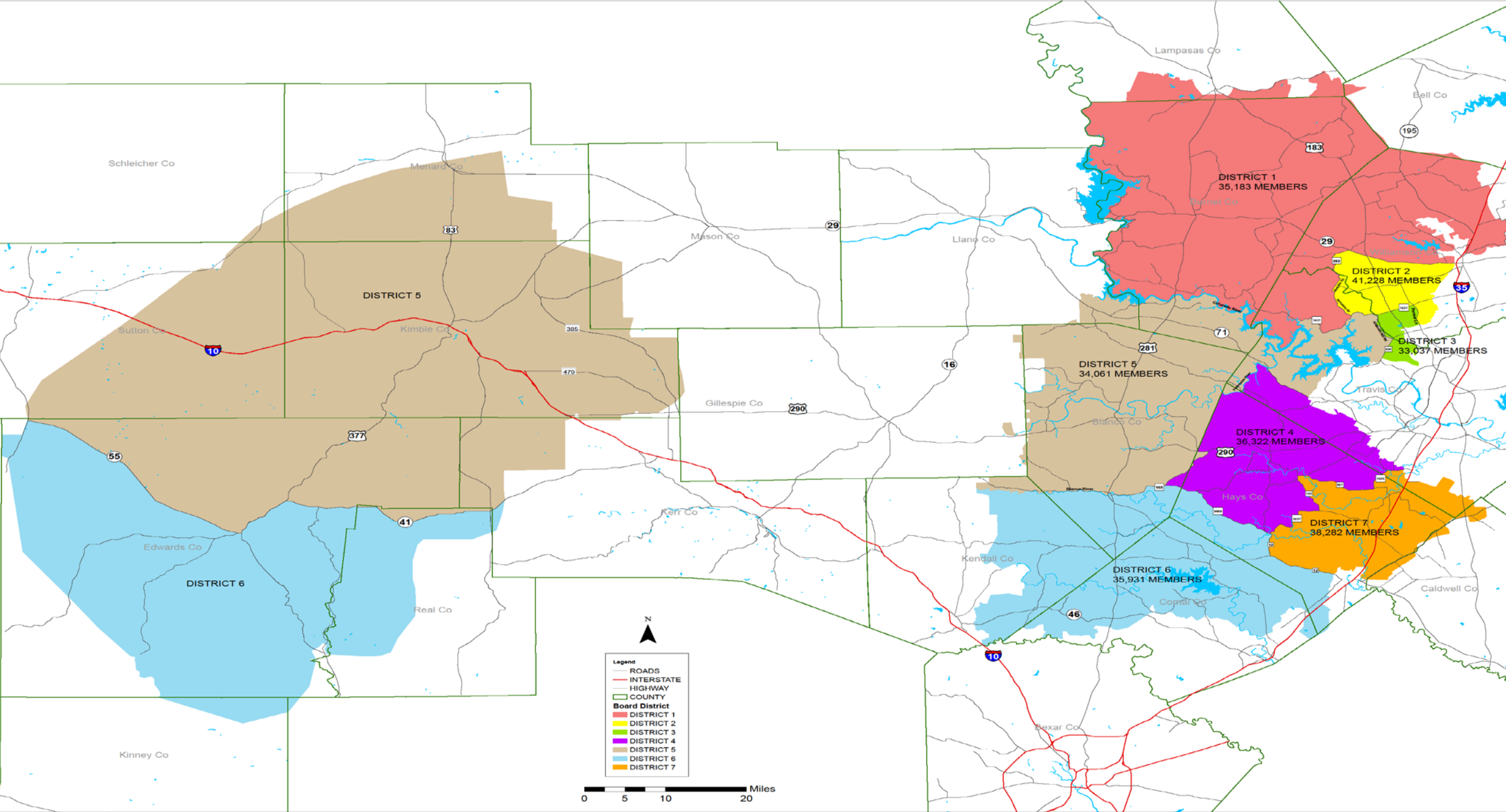
32,662 low
39,922 high

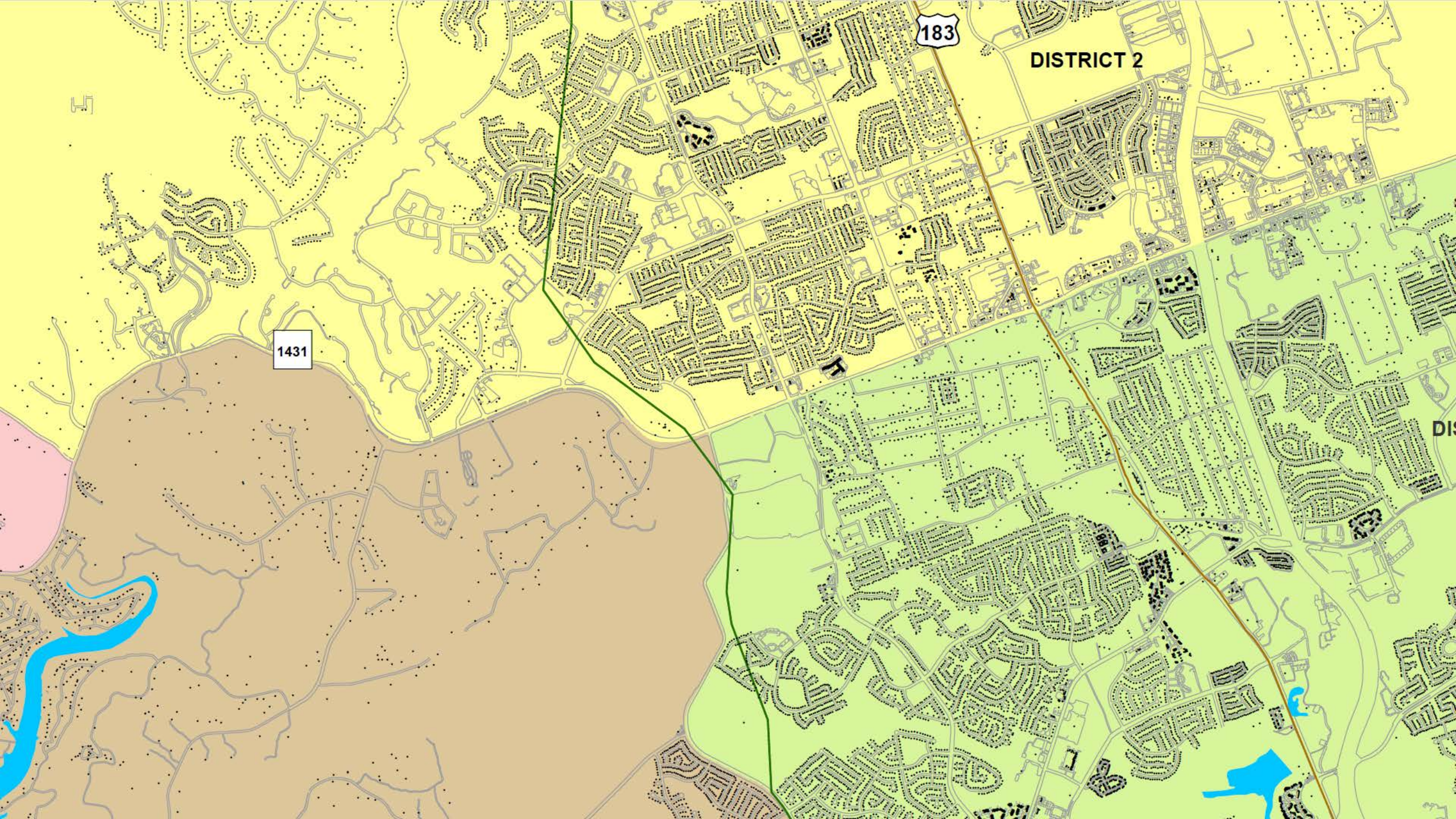
PEC Current District Count

	6/2/2015	7/7/2015 (approved)	1/2/2018	5/4/2018	+ / -
1 - Clement	30,255	32,322	34,410	35,183	-1,109
2 – Pataki	40,704	33,864	39,927	41,228	+4,936
3 – Klaus	36,143	31,903	32,395	33,037	-3,255
4 – Powers	31,345	32,911	35,595	36,322	+30
5 – Oakley	23,125	32,231	33,390	34,061	-2,231
6 – Graf	28,143	31,959	35,275	35,931	-361
7 - Akers	36,542	33,456	37,380	38,282	+1,990
TOTAL	226,672	228,646	248,365	254,044	
AVERAGE	(32,322)	(32,664)	(35,481)	(36,292)	

NOTES:

- Districts 4, 6 OK as is
- Remove 5,000+ from District 2
- Remove 2,000+ from District 7
- Spread 7,000 to 1, 3 and 5

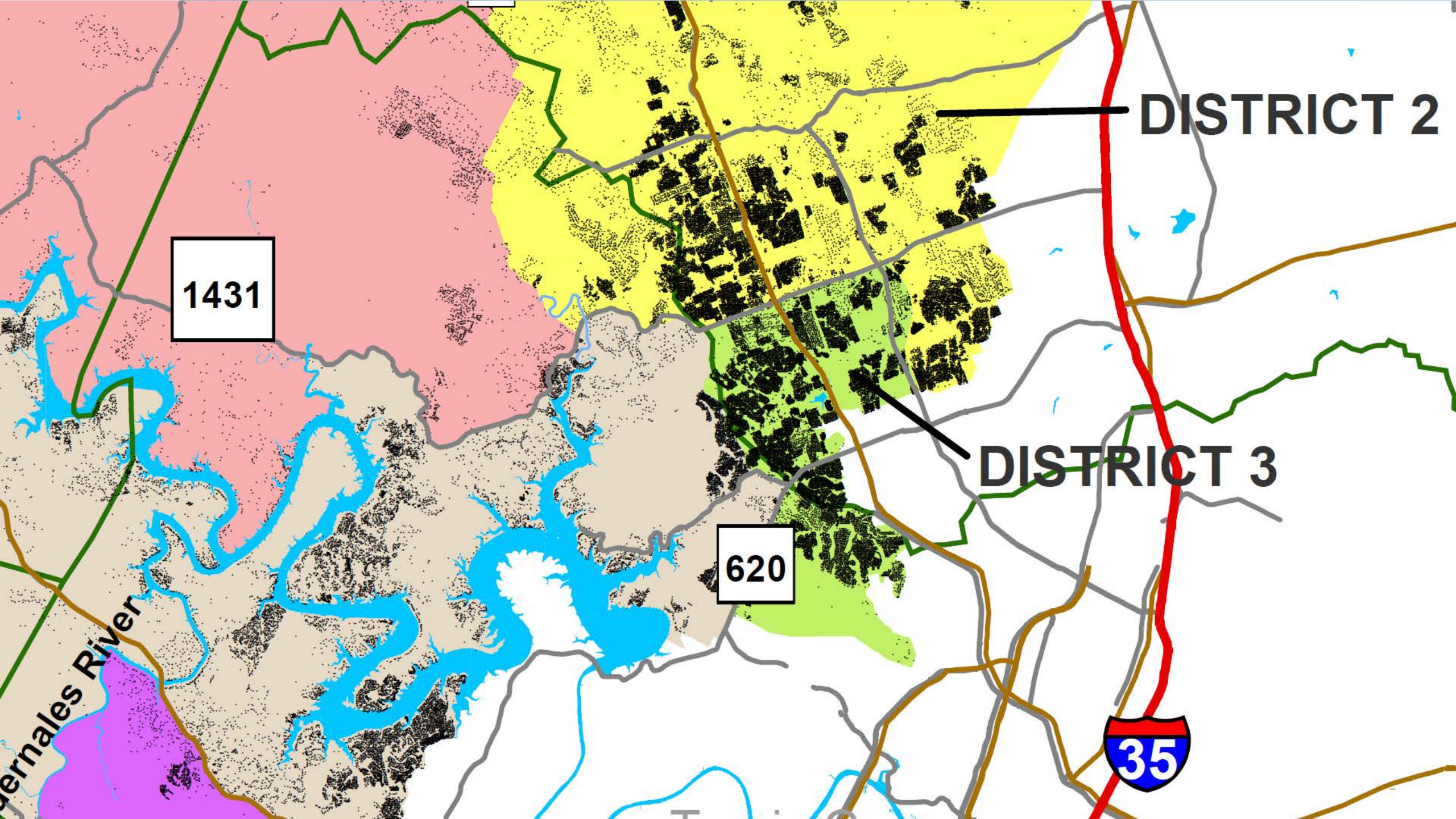




183

DISTRICT 2

1431



DISTRICT 2

1431

DISTRICT 3

620

ghales River





QUESTIONS ???

THANK YOU!