



Cooperative Update

Julie C. Parsley | Chief Executive Officer

Jonathan Greene | Chief Operations Officer — Transmission

Nathan Fulmer | Chief Operations Officer — Distribution

Randy Kruger | Chief Financial Officer

JP Urban | Chief Administrative Officer



Cooperative Weather Report for July

Julie C. Parsley | Chief Executive Officer

Nathan Fulmer | Chief Operations Officer - Distribution

JP Urban | Chief Administrative Officer

Preliminary Selected Rainfall Reports Associated With The Central Texas Independence Day Catastrophic Flooding



Bertram	20.9"
Liberty Hill	20.6"
Marble Falls	18.5"
Lago Vista	18.4"
Leander	15.3"
Burnet	13.4"
Junction	9.2"
Canyon Lake	6.0"
Kyle	1.3"

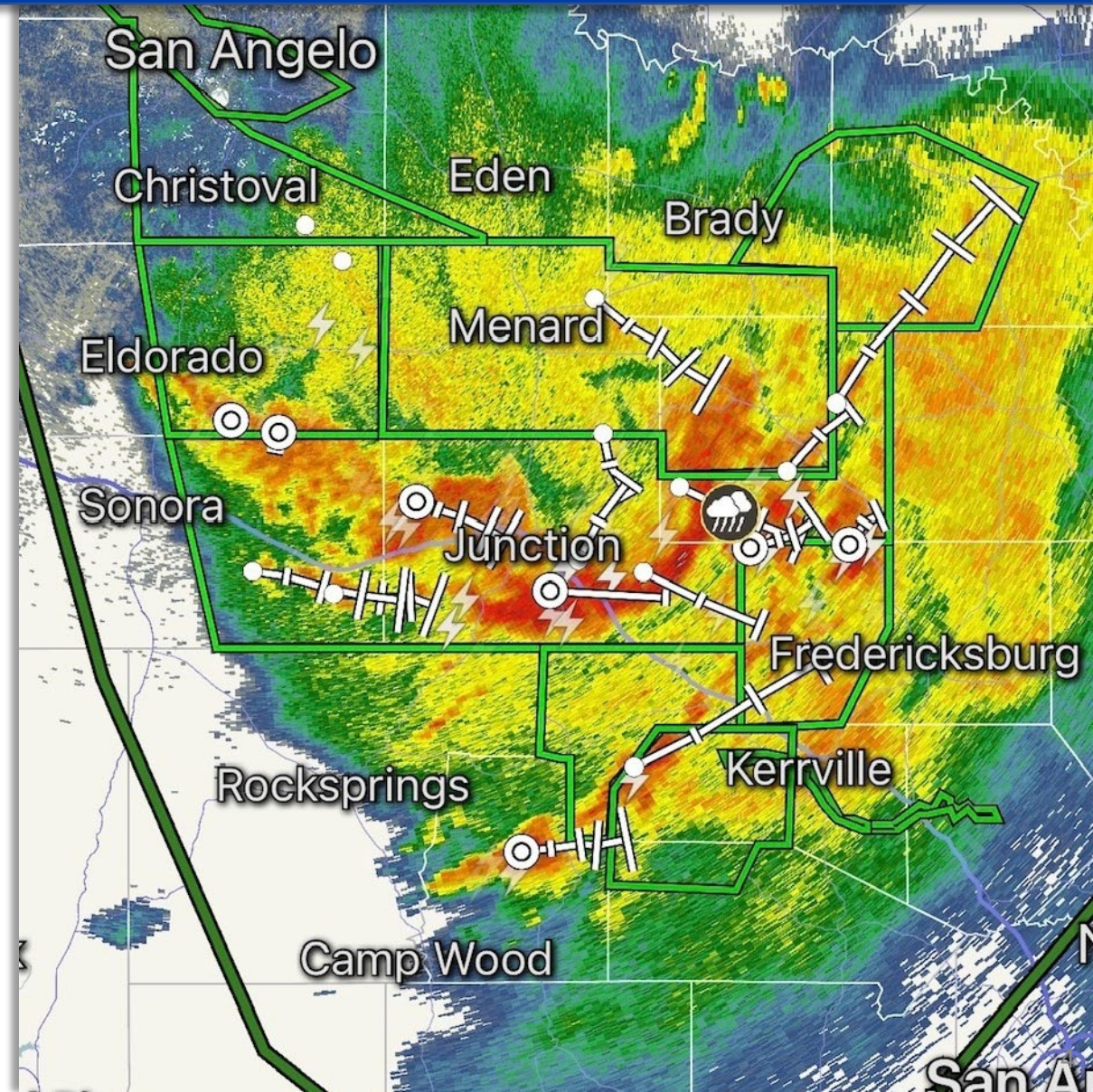
Estimated Rainfall Amounts valid between 7 am CT July 3 through 7 am CT July 8... most prolific amounts occurred July 3 - July 5

Updated 07/08/2025 11 AM CT

July 4: PEC Response

Significant rainfall in western service area

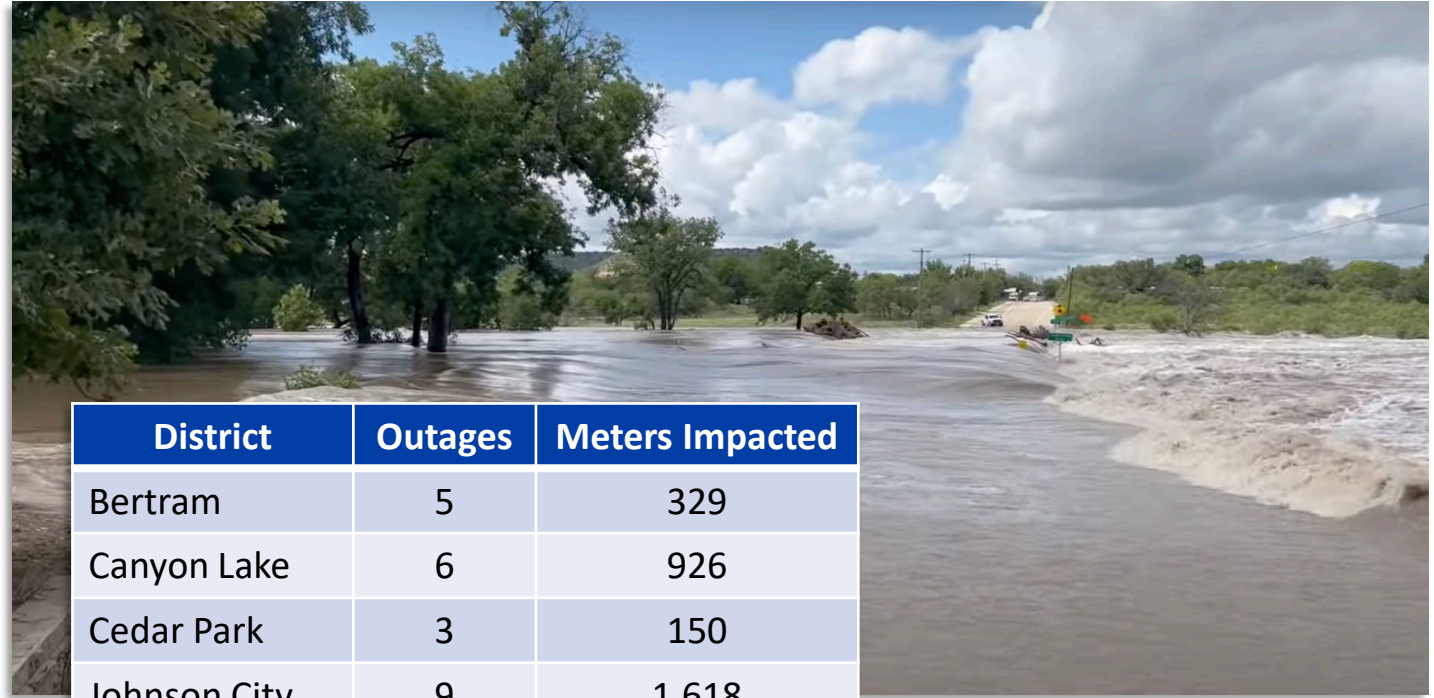
- Extreme flooding began around 4 a.m. July 4 when thunderstorms dropped more than 10 inches of rain in and around the Co-op's western service area
- Rainfall caused Guadalupe and Llano rivers to quickly rise, flooding communities in their path as a wall of water moved through service area
- Around 9 a.m., a flash-flood warning was issued for Kimble County
- Areas on River Road in Canyon Lake began to flood and were impassable



July 4: PEC Response

As crews responded to outages in the Junction District, the Co-op prepared for imminent flooding downriver

- Canyon Lake District braced for loss of infrastructure at Guadalupe River crossings, staged crews and identified pole tags
- Marble Falls, Bertram, and Liberty Hill districts prepped for the Llano River, Highland Lakes, and local creeks to swell



Flooding along South Llano River in Junction

District	Outages	Meters Impacted
Bertram	5	329
Canyon Lake	6	926
Cedar Park	3	150
Johnson City	9	1,618
Junction	19	2,060
Kyle	3	5
Liberty Hill	9	4,856
Marble Falls	6	176
Oak Hill	8	593
Total	68	10,713

July 5: PEC Response

Outages surged July 5 after storms dropped more than 20 inches of rain in Burnet County

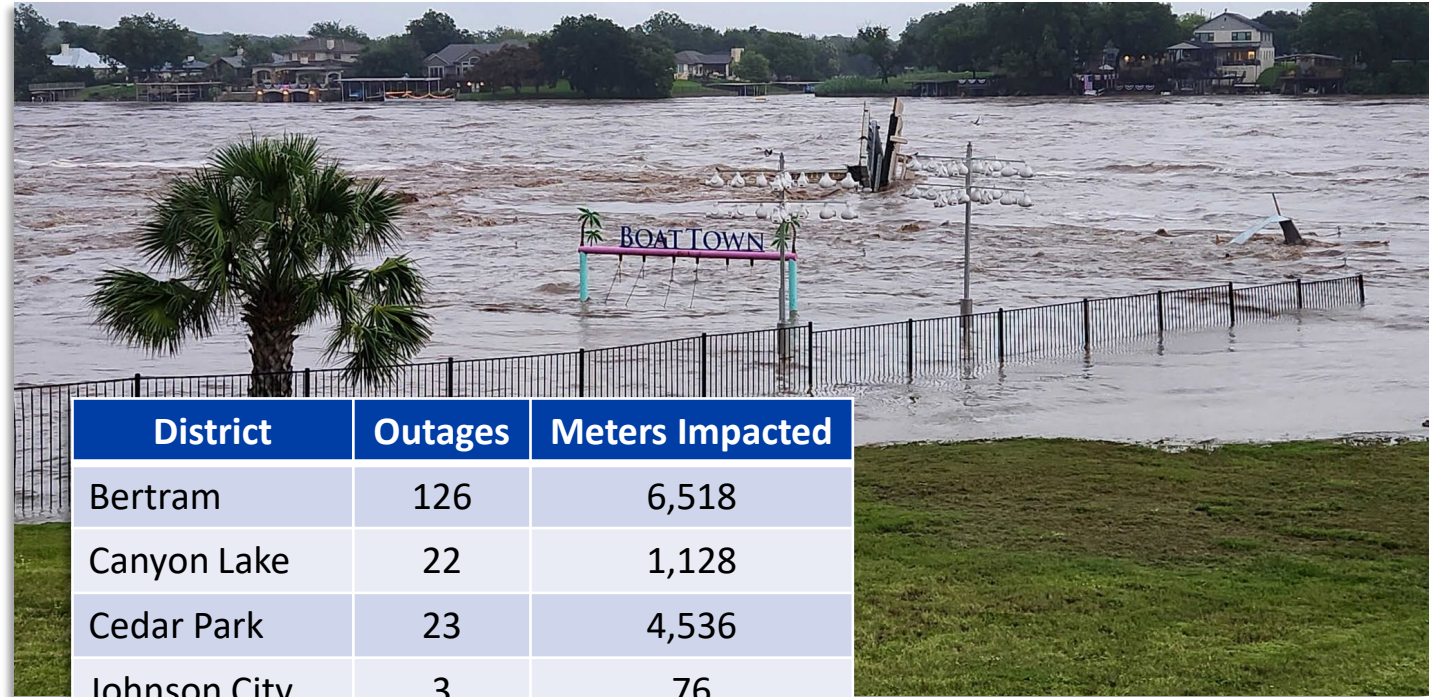
- Flooded rivers and rushing debris destroyed critical bridges and roadways, cutting off access
- Arcing at Nameless Substation required infrastructure be taken offline
- Fleet answered six callouts to pull out stuck trucks and replace blown tires
- Peaked with 12,000 meters out in Bertram, Liberty Hill, and Cedar Park
- Day ended with 10 outages



July 5: PEC Response

Burnet and Williamson counties experienced the most significant damage

- Crews from other districts and contractors came in to assist
- DOC deactivated ETRs on locations identified as inaccessible
- DOC and districts worked hand-in-hand to redirect resources and map out accessible routes
- Southern districts remained ready to respond as storms continued across the Hill Country



District	Outages	Meters Impacted
Bertram	126	6,518
Canyon Lake	22	1,128
Cedar Park	23	4,536
Johnson City	3	76
Junction	7	10
Kyle	12	57
Liberty Hill	28	6,743
Marble Falls	23	252
Oak Hill	11	1,218
Total	255	20,538

Flooding along Llano River in Kingsland. The Llano River feeds the Highland Lakes.

July 6: PEC Response

Floodwaters began receding in areas and damage assessments continued

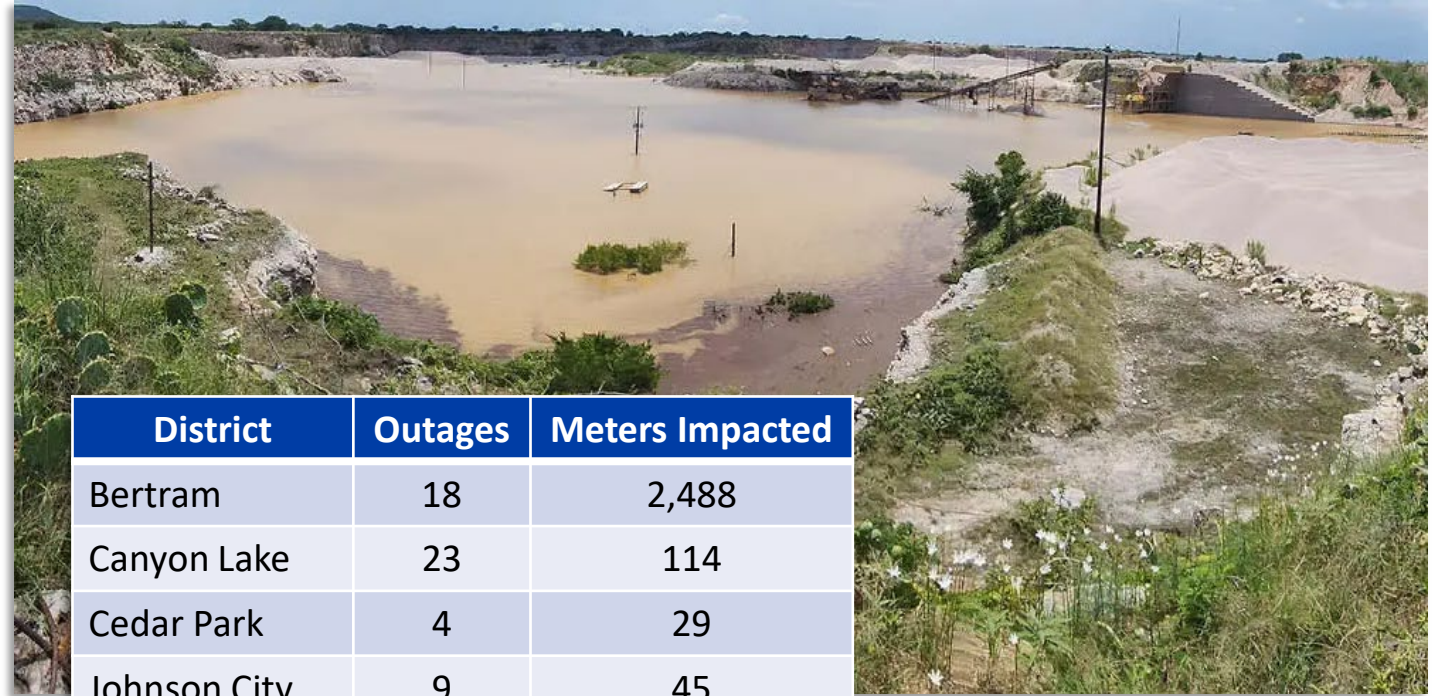
- Rain and flash-flood warnings continued across the Hill Country
- Crews worked to bring isolated areas back online as safely and quickly as possible
- Evacuations and search-and-rescue activities occurred alongside crews working in the field



July 6: PEC Response

Skies began to clear, and crews made good progress

- Fewer than 100 outages all day
- Handful of neighborhoods along Sandy Creek and Nameless Road continued to be inaccessible to crews — many structures could not be reconnected due to significant damage
- Staff began compiling reports for local municipalities and counties



District	Outages	Meters Impacted
Bertram	18	2,488
Canyon Lake	23	114
Cedar Park	4	29
Johnson City	9	45
Junction	4	6
Kyle	8	106
Liberty Hill	13	26
Marble Falls	14	35
Oak Hill	1	5
Total	94	2,854

Floodwaters fill the old Hanson quarry

July 13: PEC Response

Another round of heavy rainfall impacted Junction, Bertram, and Liberty Hill

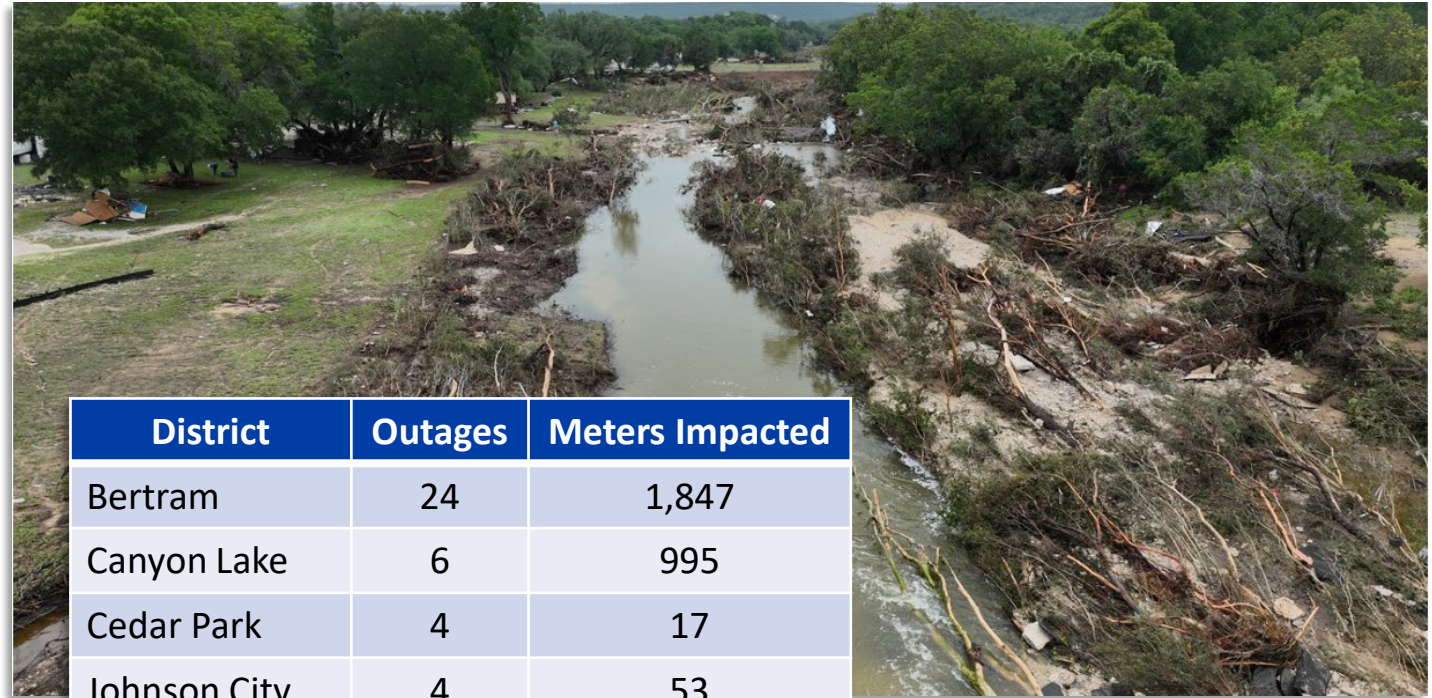
- Thunderstorms remained stationary overnight July 12, producing 3-4 inches between Menard and Llano; up to 9 inches of rain fell in western Lampasas and San Saba counties
- Sunday morning, the Llano River rose 14 ft in two hours, came back down, and rose 5 ft again
 - By 11 a.m., the river was nearly 8 ft above flood stage
- Lampasas River rose over 30 ft



July 13: PEC Response

Restorations paused due for safety

- Flooding in PEC's far northern territory impacted operations — restoration efforts in Bertram were suspended about 5 hours due to inaccessibility
- Crews working in Sandy Creek area paused restorations due to an evacuation order; work was completed later that afternoon
- As floodwaters receded, crews could safely access sites and continue working



Sandy Creek area after flooding

District	Outages	Meters Impacted
Bertram	24	1,847
Canyon Lake	6	995
Cedar Park	4	17
Johnson City	4	53
Junction	16	264
Kyle	1	3
Liberty Hill	10	4,418
Marble Falls	0	0
Oak Hill	3	319
Total	68	7,916

PEC Storm Recovery



Wire pull over Sandy Creek



UAV surveillance

PEC Storm Recovery



Lago Vista road damage



Poles damaged along 1431

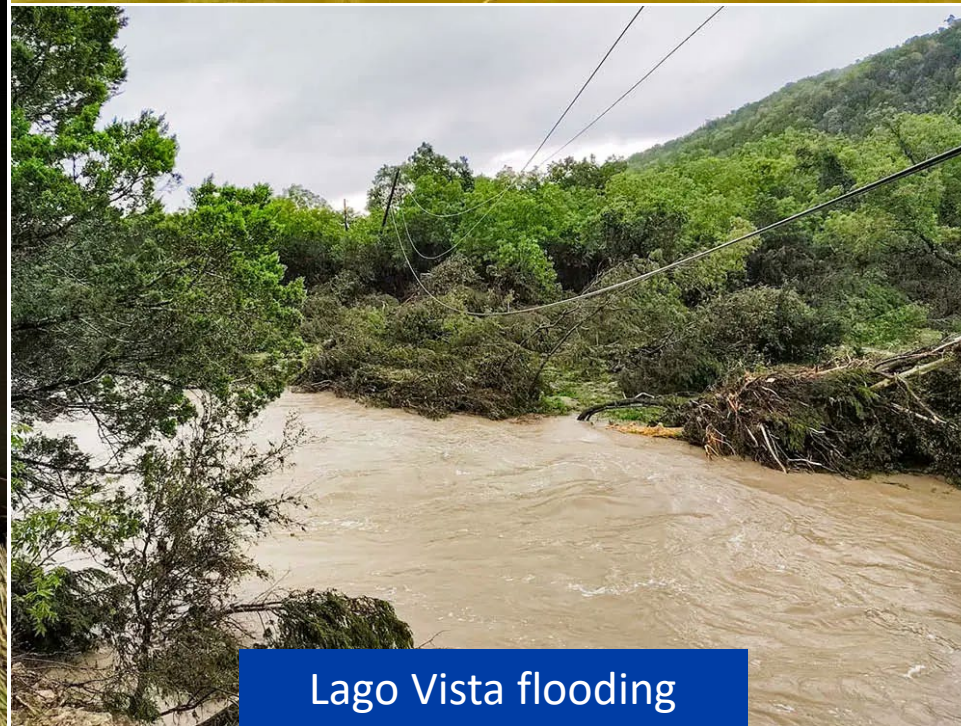
PEC Storm Recovery



Damage in Bertram



Sandy Creek line pull



Lago Vista flooding

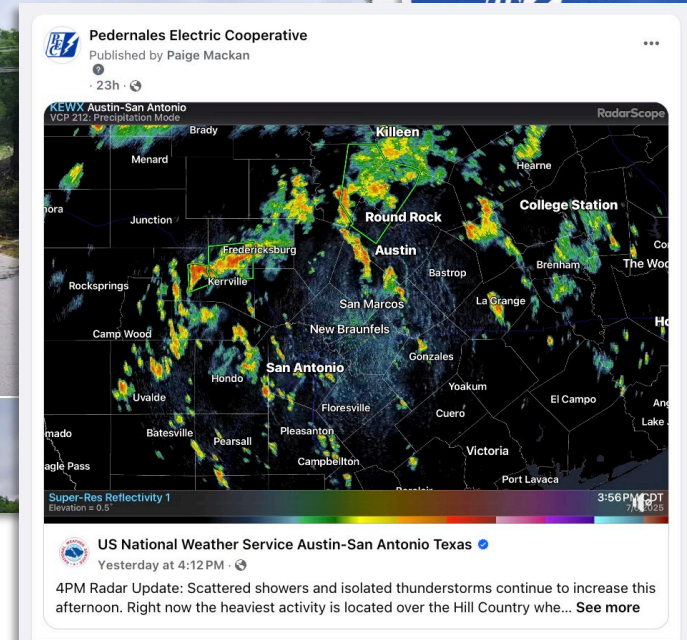
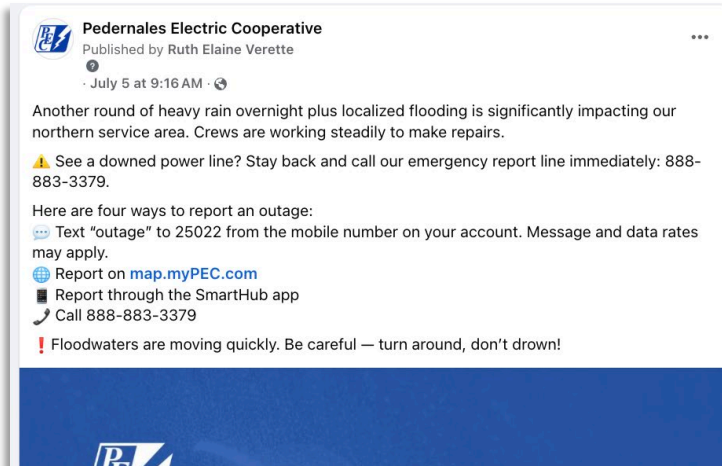
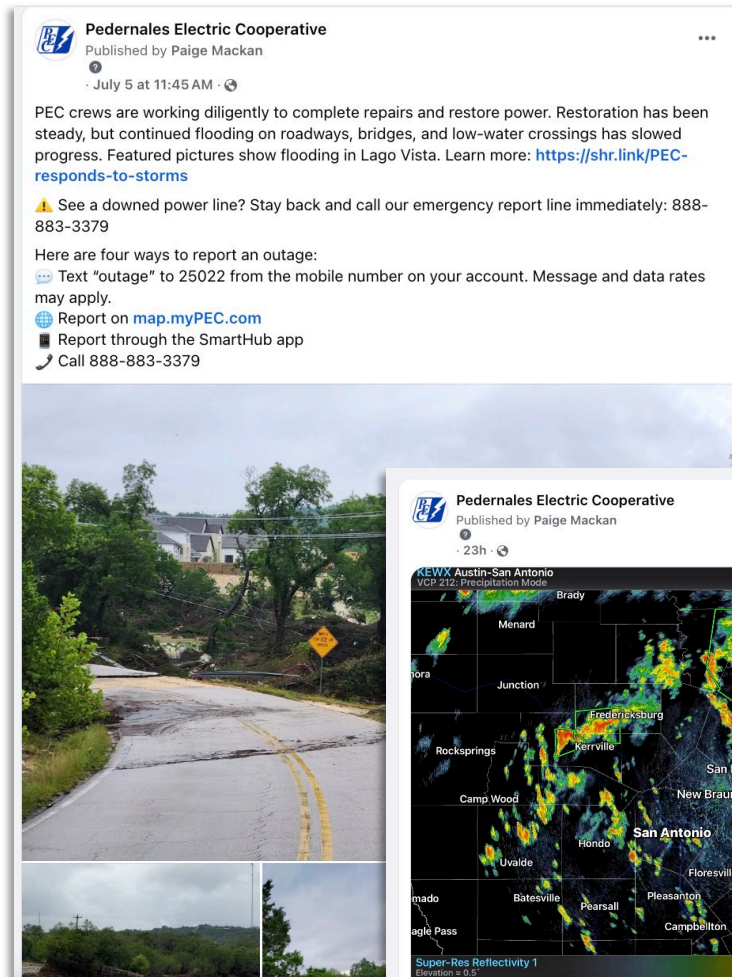


Flooded terrain

Member and Communications Support

PEC stayed in contact with members and our communities throughout the holiday weekend

- Member Relations brought in agents and activated our third-party contact center to assist with 1,200 calls
- External Relations utilized social media, myPEC.com, and media contacts to communicate PEC's activities throughout the flood
- External Relations Representatives worked with local governments and elected officials to relay updates and assist members in need



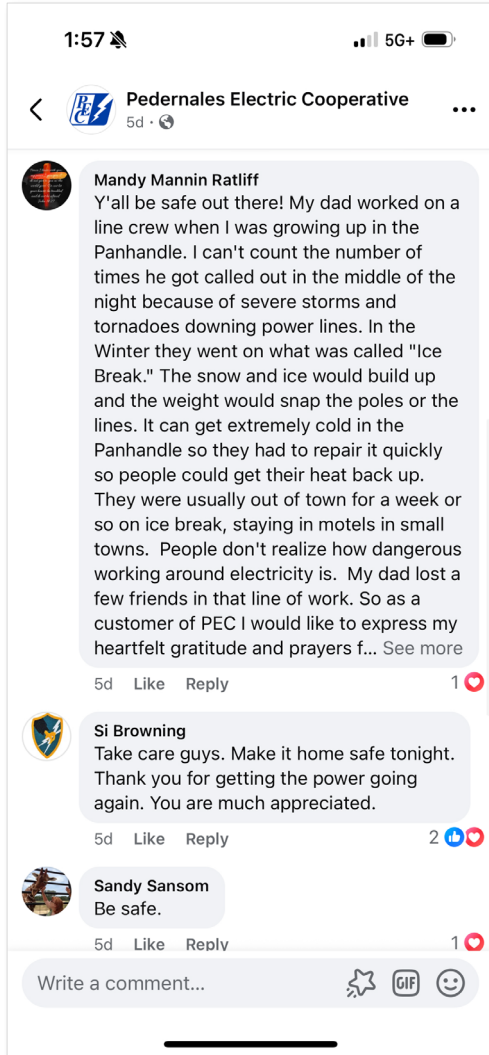
to Report
Outage

ge" to 25022

NE
rt on map.myPEC.com

THUB APP

Members Share Their Appreciation



PEC Staff Go Above and Beyond

Our team members answered the call to serve, volunteering to help members and local communities in need

These are examples among many who helped



Briar Schmitzinsky
Fleet



Nicole Campos
SCADA



Taggart Raffety
IT



Jesse Martinez
Field Services



Sarah Fischer
C & I Accounts



Lenny Jonas
SCADA



Cedar Park Journeyworker Zach Hartman and family after being rescued from their flooded home. Crews and apprentices have rallied to help Zach.



CEO Report

Julie C. Parsley | Chief Executive Officer

Regulatory Update: PUC

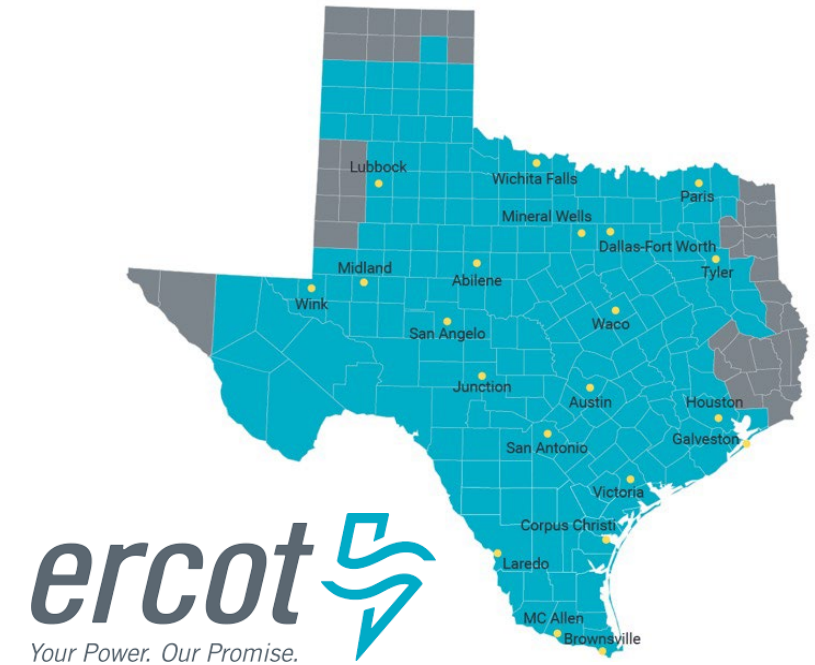
- At the July 10th PUC Open Meeting, the Texas Reliability Entity discussed the recent NERC 2025 State of Reliability report
 - Much of the report focuses on the impacts of large loads and artificial intelligence on grid operations
- Implementation plan for new laws passed during recent legislative session, including key bills that could impact PEC:
 - Senate Bill 6 - Addresses interconnection of Large Loads and requires the PUC to reassess the 4 Coincident Peak (4CP) for allocation of transmission costs; initial workshop to be held July 21
 - House Bill 145 - Requires utilities, including electric cooperatives, to submit Wildfire Mitigation Plans to the PUC; initial comments due July 25



ERCOT Summer Weatherization

ERCOT conducting weather inspections at PEC substations*

- ERCOT is conducting nine inspections at PEC substations for compliance with PUC weatherization requirements
- PEC provided ERCOT a Declaration of Summer Weather Preparedness documenting:
 - PEC preparation activities
 - Maximum temperatures experienced
 - Attestation to the completion of all required readiness activities



*ERCOT is required to conduct inspections of transmission facilities selected through a risk-based methodology of at least ten percent of substations to be inspected once every three years.

TPPA Annual Conference

Staff Joined Utility Leaders from Across Texas

- Keynote speakers included:
 - Taylor Kilroy, Executive Director, TPPA
 - Bill Flores, Chair, ERCOT Board
 - Courtney Hjaltman, Commissioner, PUC
- Topics ranged from gas peaker plant projects, water resources, ratemaking concerns, and Fitch Ratings
- Conference concluded with a CEO roundtable



TEXAS PUBLIC POWER ASSOCIATION

Texas Public Power Association

Annual Conference

July 14 - 16

Austin

Junction Appreciation Dinner



Join us!

September 9 at 6 p.m.

PEC invites you for a
community dinner and
business update

Coke R. Stevenson
Memorial Building
440 Highway 83 North
Junction, Texas

Good luck, Team PEC!

Texas Lineman's Rodeo
July 17-19, 2025
Nolte Island Park
Seguin, Texas





July Quarterly Report

Jonathan Greene | Chief Operating Officer -
Transmission

Florence Substation Addition

New Florence
Substation in the
northern end of our
service territory



Lago Vista T3 Addition

Lago Vista T3
upgrade supports
area load growth



Portable Transformer Upgrades

Portable transformers
used during upgrade
projects



T333 Lago Vista to Nameless

Overhaul project to improve storm hardening and reliability was completed and energized in May.



T623 Trading Post to Cedar Valley

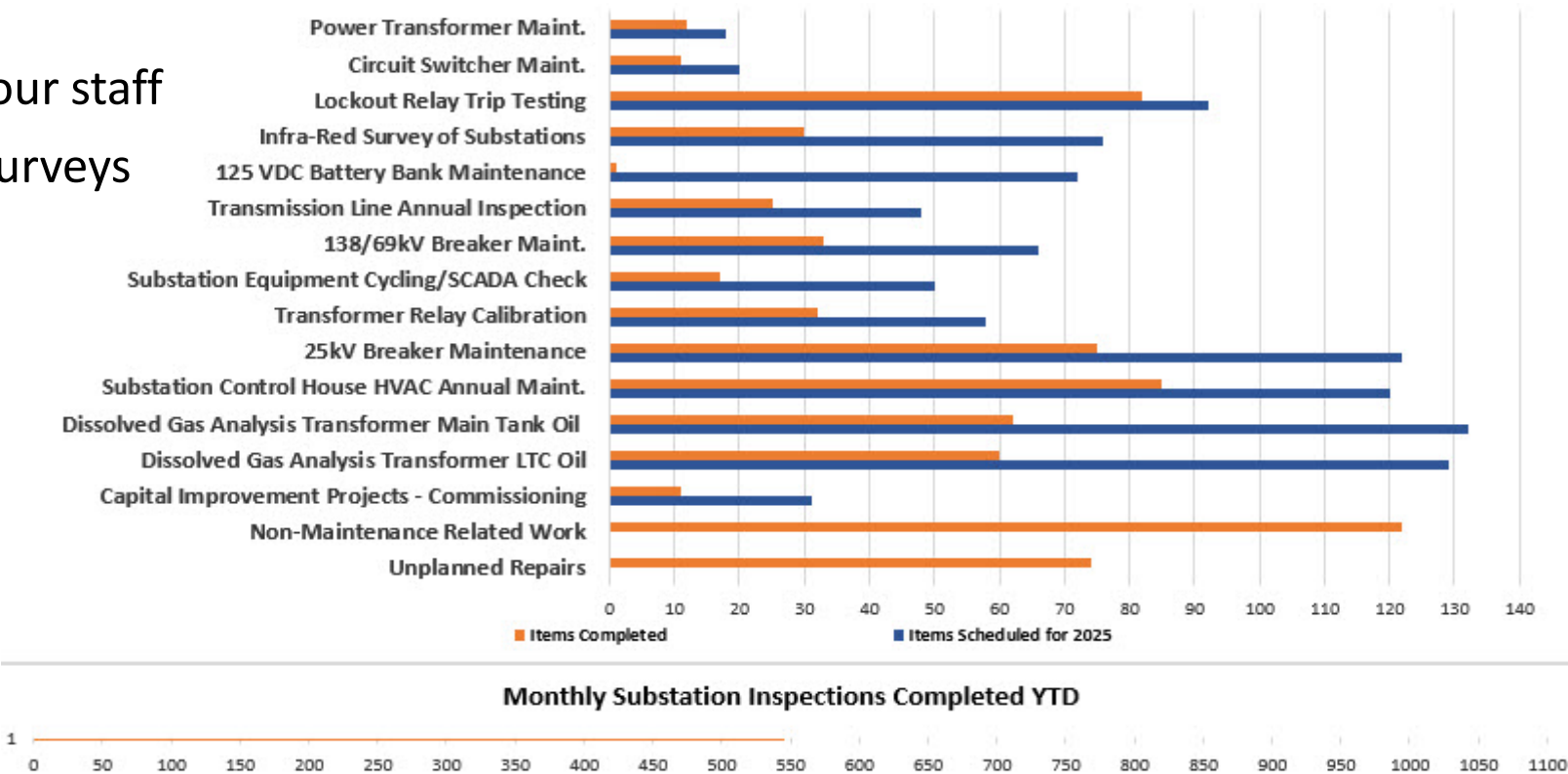
Storm hardening project completed in May, included circuit rebuild for reliability.



System Maintenance

2025 Transmission Maintenance

- Scheduled equipment maintenance is progressing as planned
- In addition, over **545** substation inspections and **190** corrective repairs have been completed
- Focus for the summer:
 - Summer heat safety for our staff
 - Completing all infrared surveys



System Performance – Calendar Year 2025

- Transmission System is performing well – system availability is high, trending similarly to 2024

Summer Operations

- Energized several transmission line projects, restoring lines prior to May 15
- Continue to monitor the system and load
- Managing outages and outage requests as submitted
- Currently training on UFLS and EEA load shed

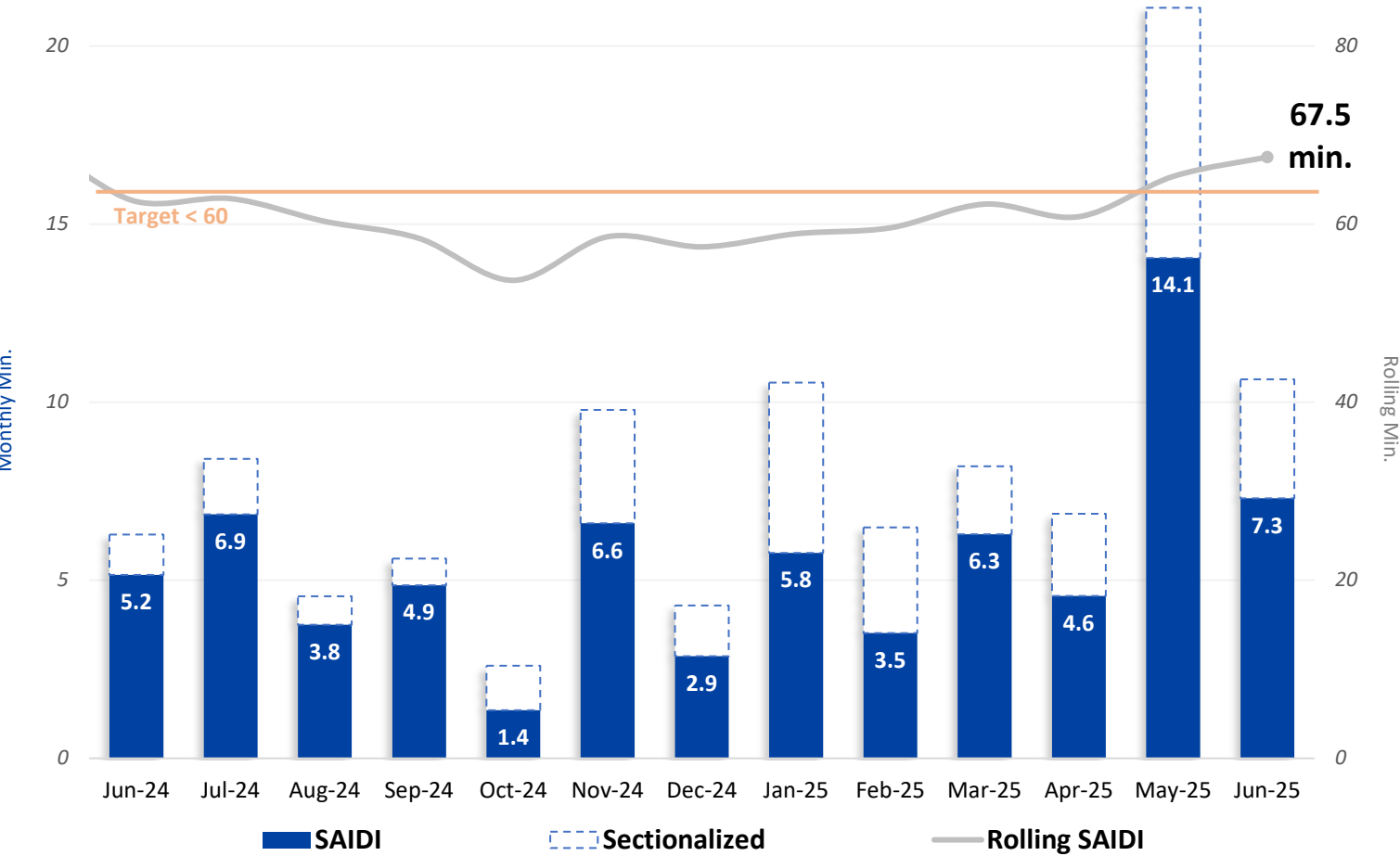


Operations Report

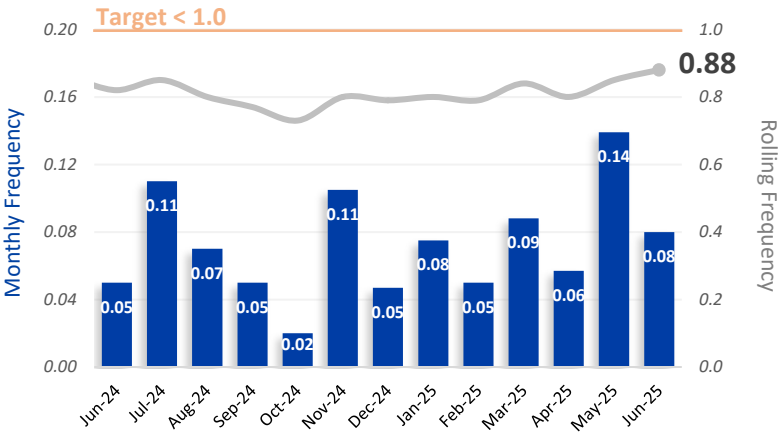
Nathan Fulmer | Chief Operations Officer -
Distribution

Reliability

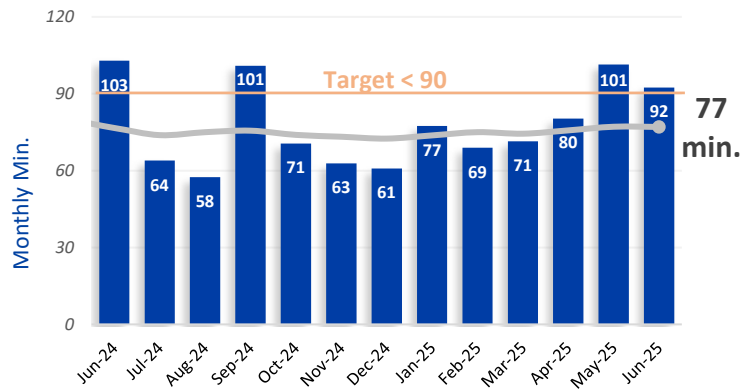
SAIDI System Average Interruption Duration Index
TX Avg SAIDI in 2023 = **150.3 min.** reported by the Dept. of Energy



SAIFI System Average Interruption Frequency Index



CAIDI Customer Average Interruption Duration Index



MC130 Lockout

Major vehicle accident in Oak Hill District - June 20

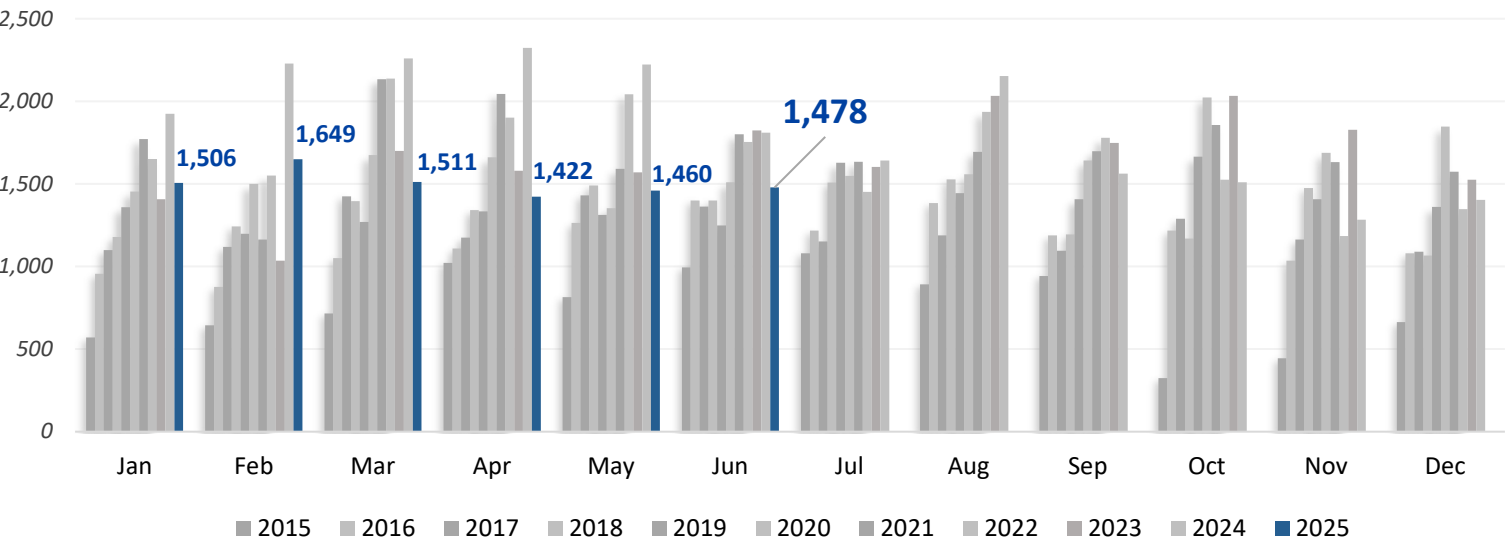
- A main feeder pole was struck by a vehicle that snapped the pole in two places and caused a large power outage
- DOC was able to quickly transfer much of the load from the Buda substation
- Crews worked to float phases for temporary repair and what could have been a significant outage event was greatly limited



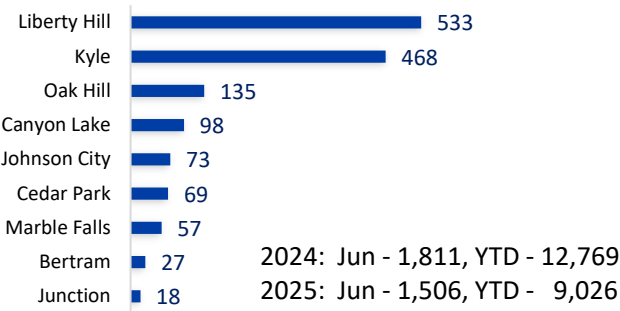
System Growth

Line Extensions Completed

2023: 19,886 2024: 22,323 2025 YTD: 9,026



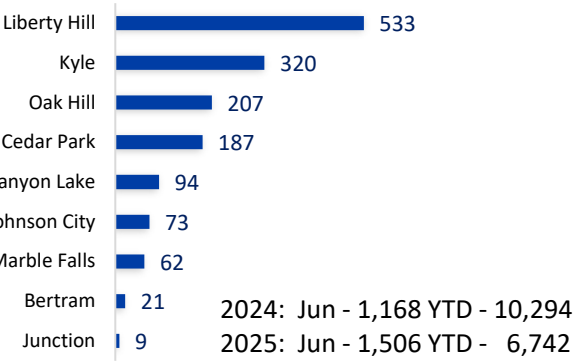
Line Extensions by District



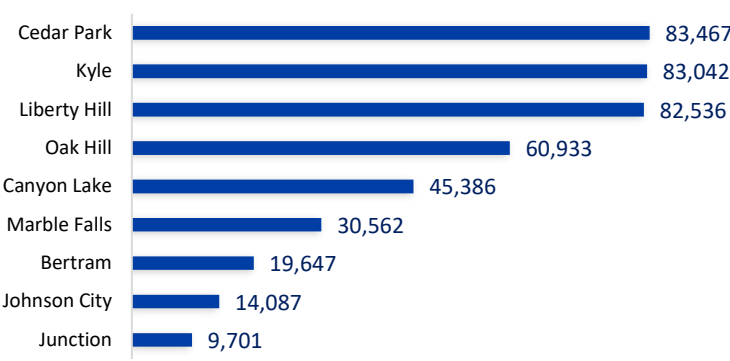
Miles of Distribution Line:

Overhead:	17,813	(69%)
Underground:	7,978	(31%)
Total:	25,791	

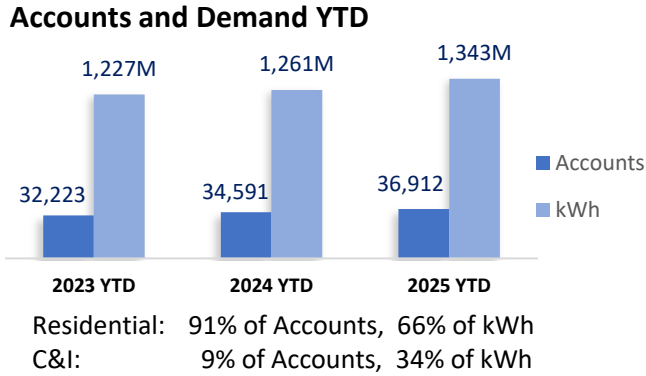
Meter Growth (1,506)



Meter Totals (429,361)



Commercial & Industrial



Safety & Technical Training

Safety Highlights

Training and Classes

- Meter Safety: 462 FTE
- Lock-out/Tag-out (LOTO): 16 TCC staff
- Housekeeping on the Job: 477 FTE
- Struck-by, Caught Between: 448 FTE
- CPR: 89 FTE
- DOT Physicals: 38 FTE

District Safety Meetings

- 34 completed in June

Jobsite Safety Observations

- Safety Advisors: 41
- Operations Management: 6

Technical Training Overview

Activation of the Workhands App

- Improved apprentice tracking
- Automated alerts for time coding
- Monthly evaluations
- Accurate tracking of skills and hours



Technical Training Spotlight

Technical Training Team

James Vasquez

Director, Safety & Technical Training

Josh Hanawalt

Technical Training Manager

Brent Guenter

Technical Training Instructor

Nicholas Morris

Technical Training Instructor

Ryan McGuire

Technical Training Instructor

Melissa Nodecker

Safety and Technical Training Analyst





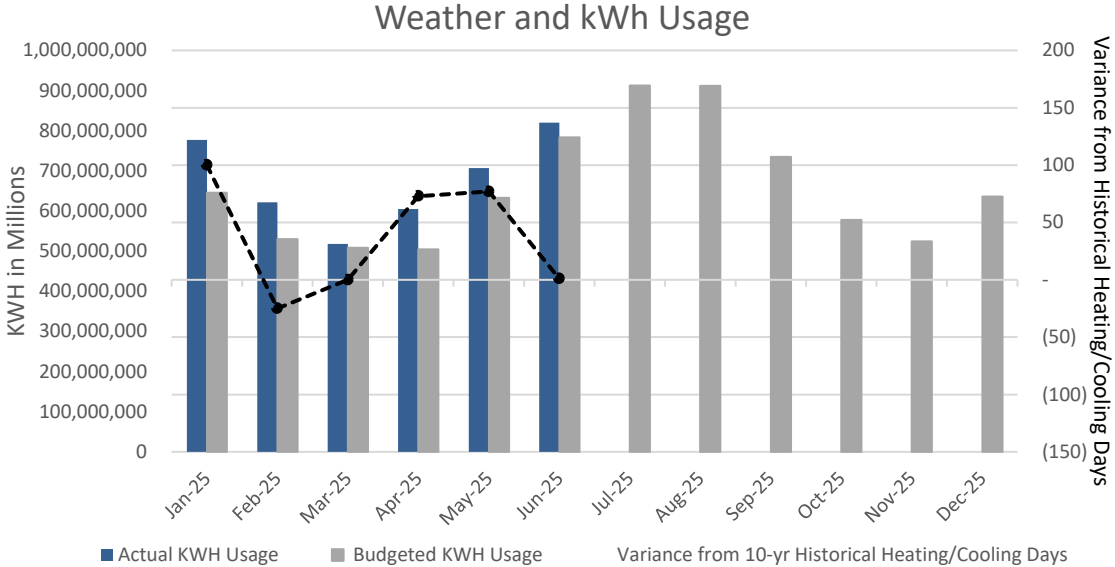
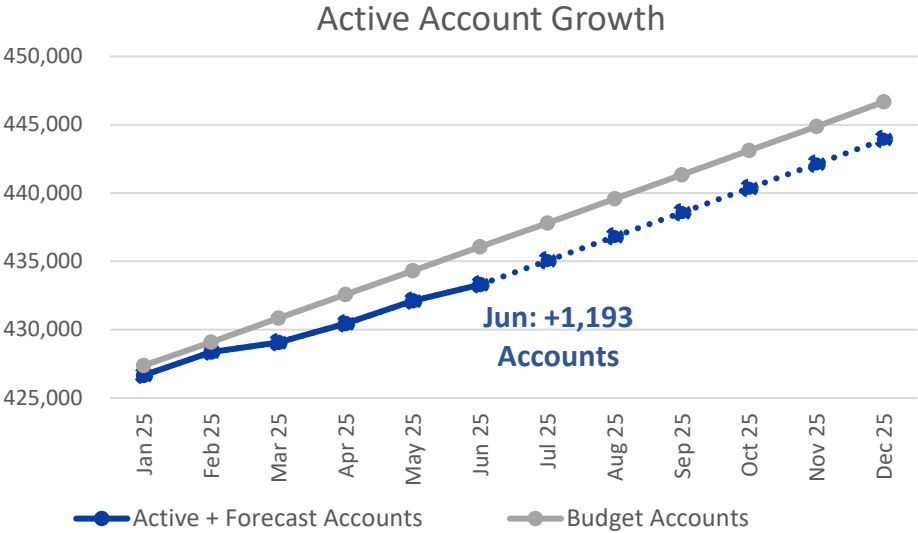
June 2025 Financial Report

Randy Kruger | Chief Financial Officer

Finance at a Glance – June 2025

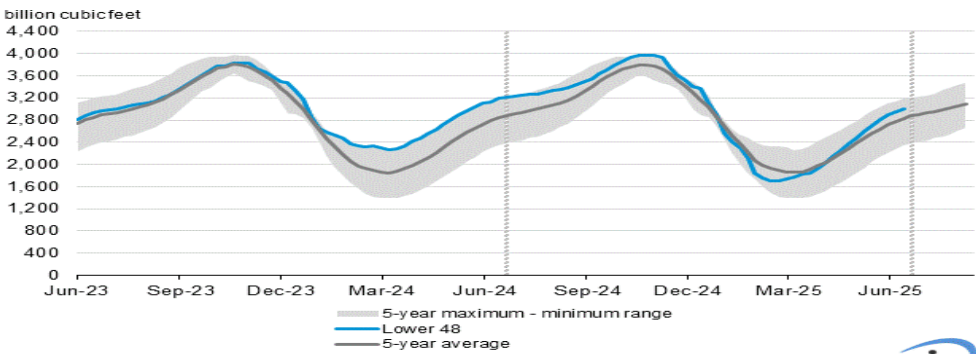
	MTD (\$ in millions)			YTD (\$ in millions)		
	Actual	Budget	Variance	Actual	Budget	Variance
MWH Sold	820,375	783,152	37,223	4,048,583	3,604,347	444,237
Gross Margins	\$ 38.0	\$ 36.1	\$ 1.9	\$ 199.2	\$ 190.8	\$ 8.4
Net Margins	\$ 8.1	\$ 8.6	\$ (0.5)	\$ 36.3	\$ 26.9	\$ 9.4
EBIDA	\$ 19.2	\$ 20.2	\$ (1.0)	\$ 103.5	\$ 95.4	\$ 8.1
					\$ -	
Revenue O/(U)	\$ 7.0	\$ 4.3	\$ 2.7	\$ 21.9	\$ 1.4	\$ 20.5
EBIDA(X)	\$ 26.3	\$ 24.5	\$ 1.8	\$ 125.4	\$ 96.8	\$ 28.6

	Liquidity Coverage
Cash & Marketable Securities	\$ 25,813,958
Short Term Facilities	605,000,000
Less: Short Term Borrowings	159,276,257
Available Liquidity	\$ 471,537,701
Liquidity Coverage (Days)	198



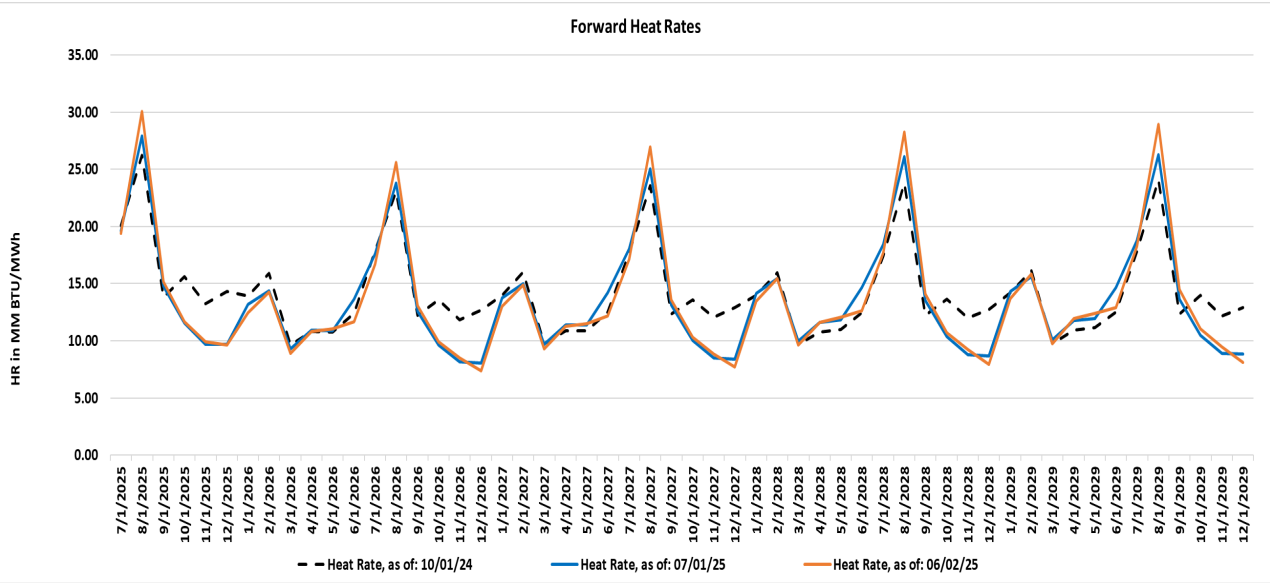
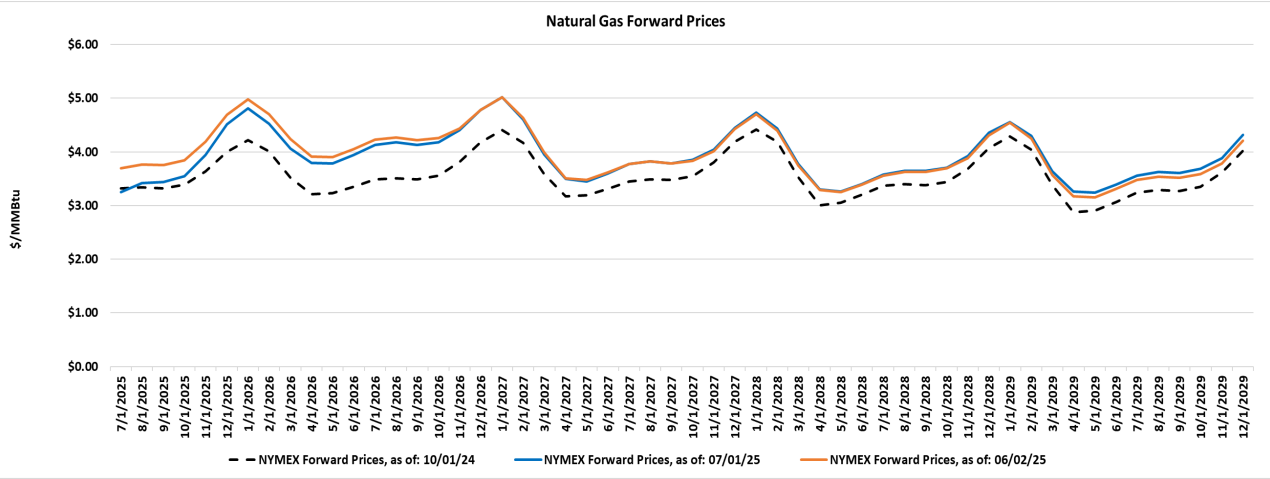
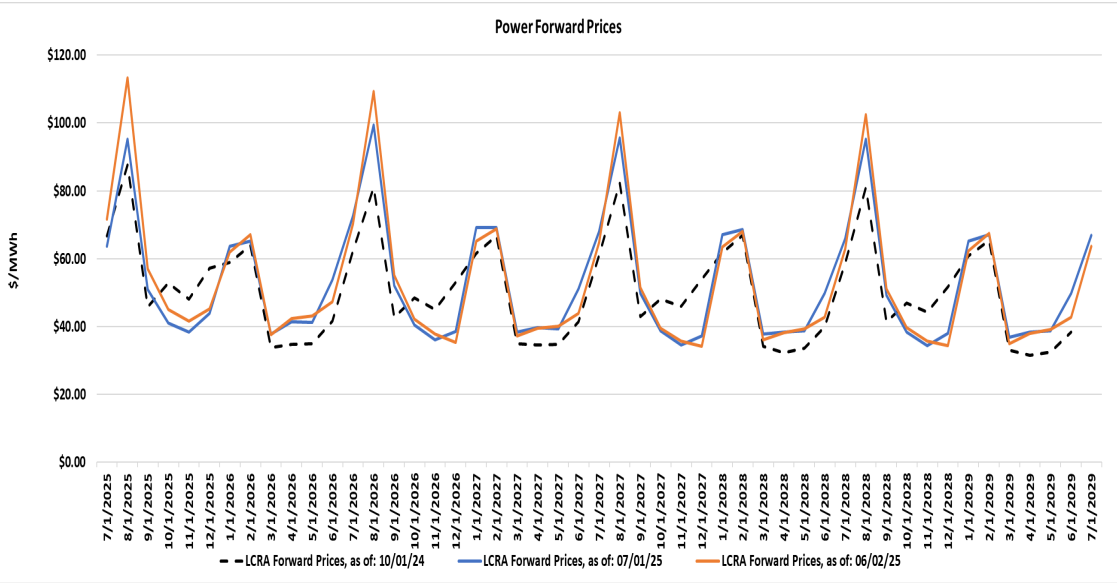
Power Market Fundamentals

Working gas in underground storage compared with the 5-year maximum and minimum



Data source: U.S. Energy Information Administration
Note: The shaded area indicates the range between the historical minimum and maximum values for the weekly series from 2020 through 2024. The dashed vertical lines indicate current and year-ago weekly periods.

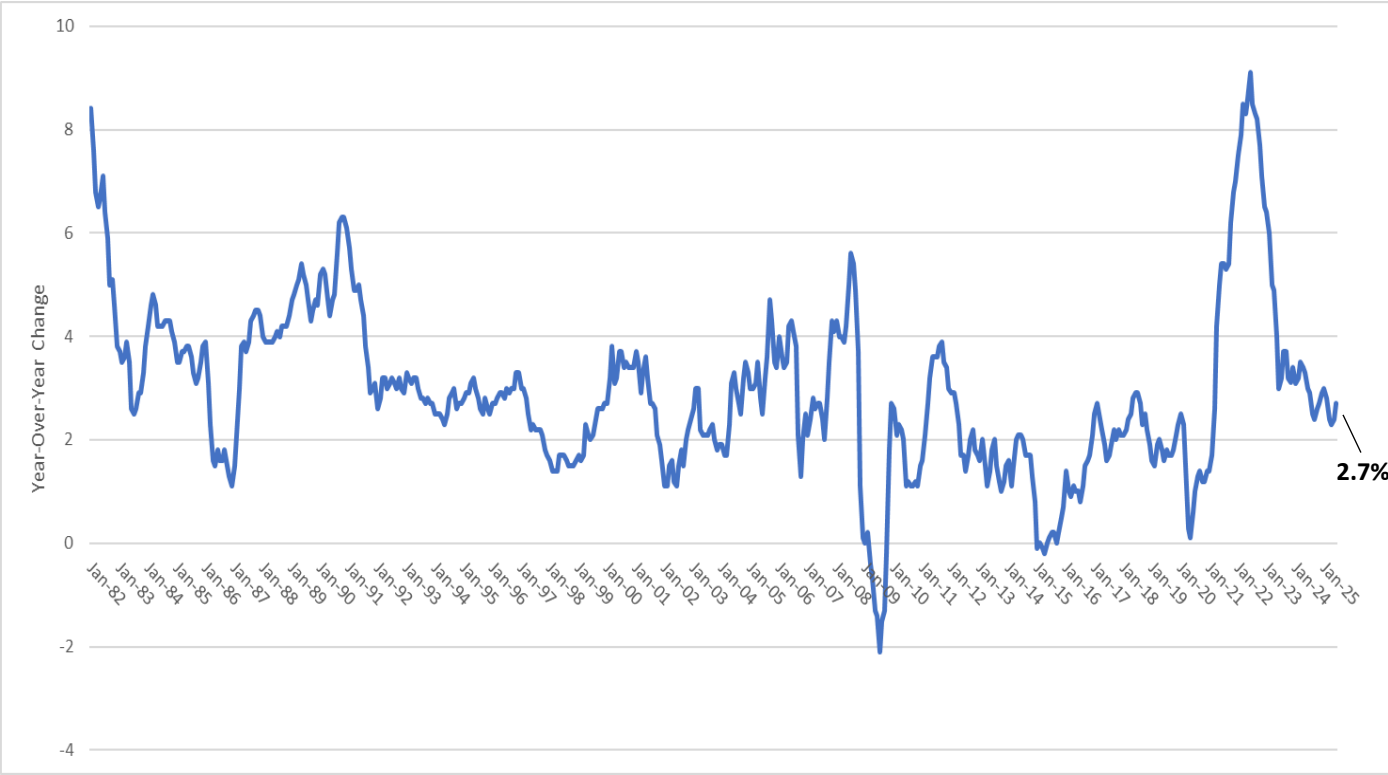
As of July 4, 2025



Inflation

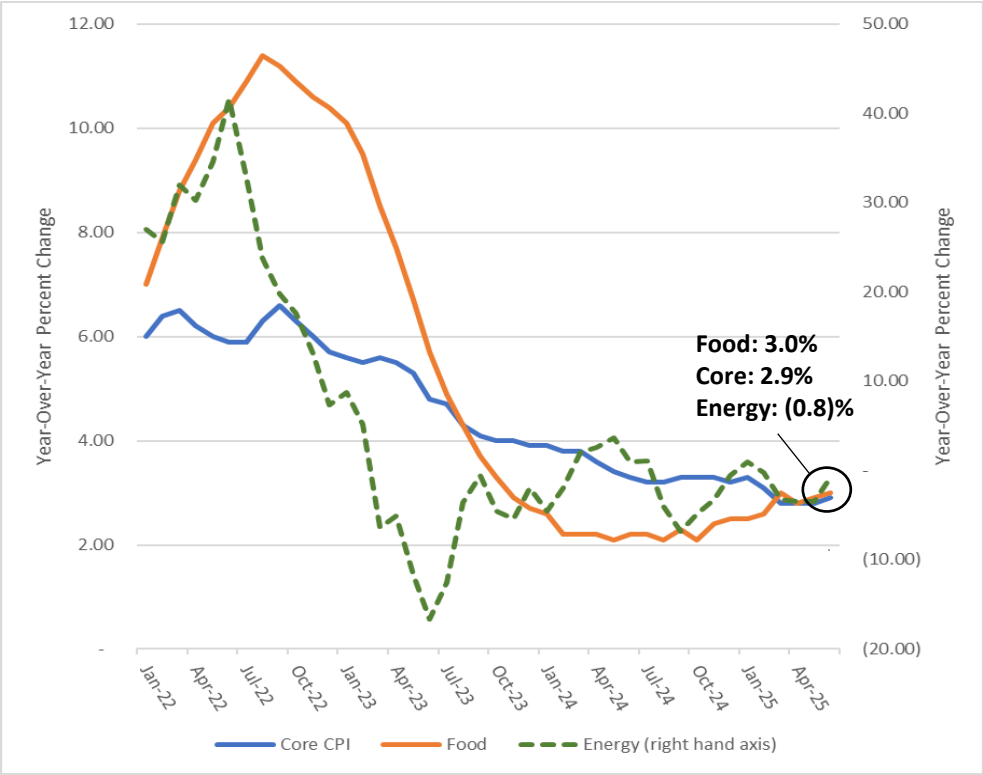
Overall CPI increased to 2.7% YoY from 2.4% YoY in May; Core CPI increased to 2.9% YoY from 2.8% YoY in May. Energy prices were down -0.8% YoY driven by gasoline (-8.3%) and fuel oil (-4.7%); partially offset by utility gas service (+14.2%) and sustained increases to electricity prices (+5.8%).

CPI Jan 1982 to Jun 2025



Source: U.S. Bureau of Labor Statistics

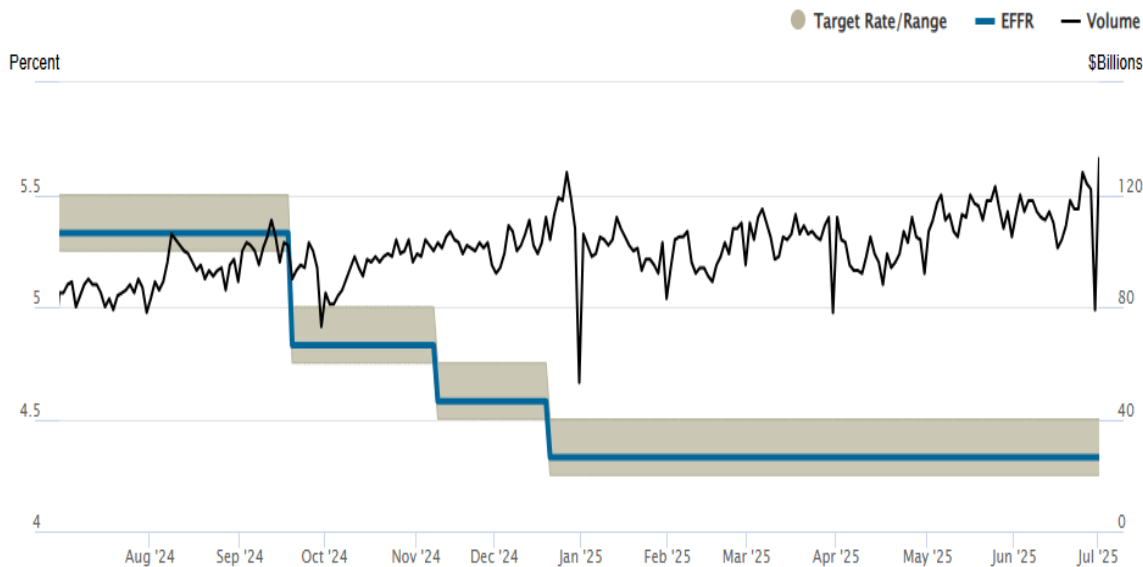
Core CPI, Food and Energy
Jan 2022 to Jun 2025



Source: U.S. Bureau of Labor Statistics

Interest Rates

Federal Funds Rate



Source: Federal Reserve Bank of New York 07/02/2025

10-Year Note



Source: The Wall Street Journal 07/10/2025



CAO Report

JP Urban | Chief Administrative Officer

Member Relations Report

June Member Relations Metrics

- Calls handled: 22,597
- Chats handled: 1,612
- Applications for existing service
 - Online: 3,664 (32%)
 - Phone: 7,432 (68%)
- Satisfaction rating: 4.58 out of 5
- First-contact resolution: 91.08%
- 94.77% of members say they would enjoy working with the same agent again



Camp Save-A-Watt Solar Car Derby

100 Campers Joined Race

- PEC welcomed Camp Save-A-Watt campers and their families to the fourth annual Solar Car Derby
- Hosted on Thursday, June 26 at Putters and Gutters in Marble Falls
- Egg Drop Challenge(s): July 18 and 29



Power Alliance Meeting

PEC Hosts Update with ERCOT

- Power Alliance Partners in Energy met July 10 in Austin
 - Alliance was created last year to foster relationships and brainstorming between some of Texas' largest utilities
- PEC hosted a roundtable discussion with ERCOT public affairs and communications leadership



2025 Youth Tour Trip

PEC Delegates Return Home

- After a week in our nation's capital, our 2025 Youth Tour delegates are back home!
 - 10 delegates from PEC joined teens from cooperatives across the country
- PEC's group toured historical sites, saw government in action, and met with their Texas representatives
- 2025 marked the 60th anniversary of the Youth Tour, created by LBJ





Appreciation and Look Ahead

Employee Shoutouts*



Angel Almanza
Member Relations
Analyst
Oak Hill



Guy Lowe
Journeyworker
Bertram



Annie Johnson
Member Relations
Agent 2
Marble Falls



Alyssa Moore
Distribution Planner 1
Bertram



Lynne Monette
Member Relations
Analyst
Marble Falls

**These were selected from the hundreds of shoutouts PEC receives each month*



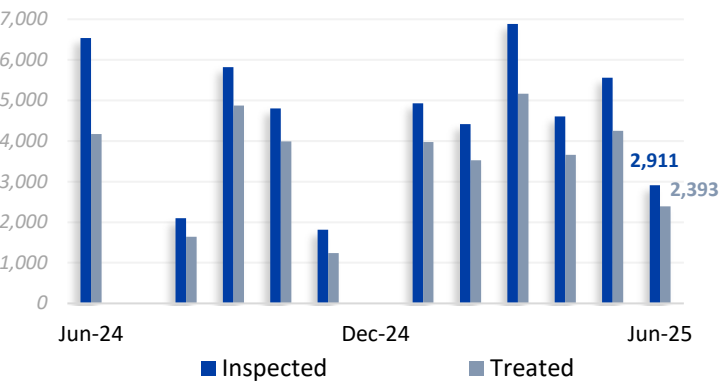
Appendix Pages

Maintenance & Technical Services

Pole Testing & Treatment (PTT)

Poles Inspected & Treated

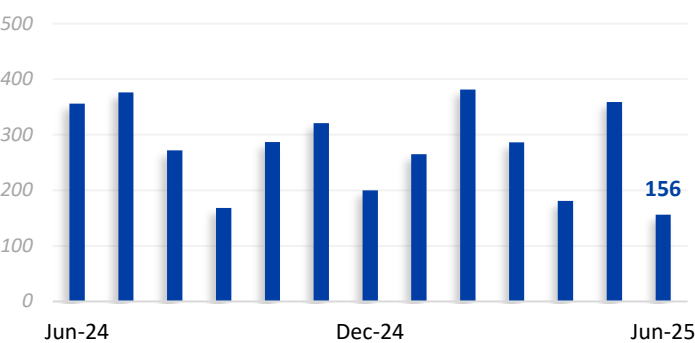
2024 YTD: Inspections - 28,731 Treated - 22,082
2025 YTD: Inspections - 29,315 Treated - 22,975



Underground Equipment

Pad Restorations

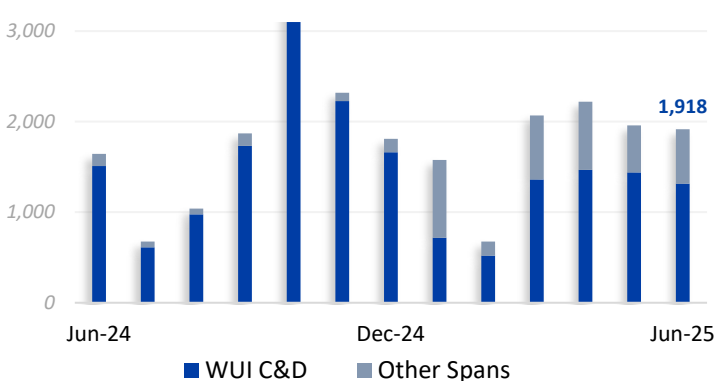
2024 YTD: 2,320
2025 YTD: 1,628



Vegetation Management

Span Clearings

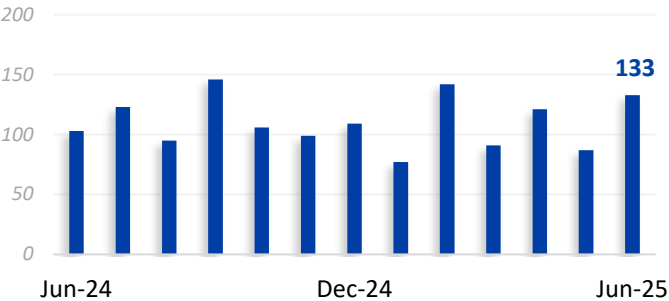
2024 YTD: Encroachments Completed - 13,999
2025 YTD: Encroachments Completed - 10,418



Technical Services

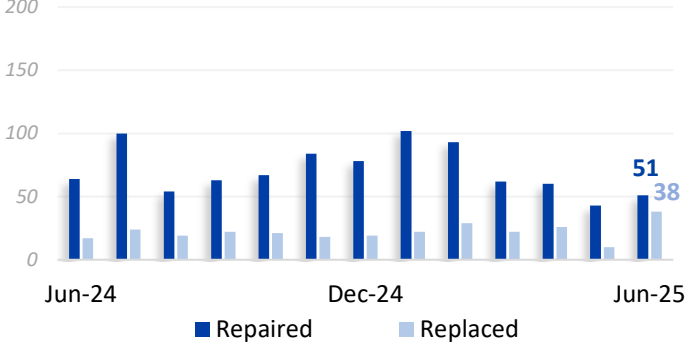
Equipment Inspections

2024 YTD: 1,047
2025 YTD: 651



Equipment Repaired or Replaced

2024 YTD: Repaired - 397 Replaced - 112
2025 YTD: Repaired - 411 Replaced - 147



Planning Engineering Projects

Project	Completion	Percent Complete
Load Projection Study	Feb 2025	100%
2025 CIP Project Maps	Feb 2025	100%
Capacitor Settings	Mar 2025	100%
4CP Study	Apr 2025	100%
Summer Contingency	May 2025	100%
UFLS Study	Jul 2025	100%
CIP (1 st Draft) Study	Jul 2025	20%
CIP (Final Draft) Study	Aug 2025	0%
Mock UFLS Study	Dec 2025	0%
20-Year Plan Study	Dec 2025	10%
Winter Contingency	Dec 2025	0%

Large Project Updates

Johnson City - Haley Road Phase II Yard Expansion

RFP responses received June 18 and currently under review for GC award. Completion forecasted for Nov. - Dec. timeframe.

Junction

Site electrical, fencing, and Fleet Building construction are underway. Warehouse office space expansion began in mid-June. Project completion forecasted for Nov. 2025.

Headquarters Facility Generator Replacement

Facility back-up generator replaced to support 100% functionality in the event of power outages. Legacy generator inventoried for future use. Work complete on June 30.

Liberty Hill Materials Yard Expansion

RFP responses received on June 26 and are currently under evaluation for GC award. Project completion forecasted for end of year, 2025.

Kyle Yard Base Stabilization

Yard base stabilization effort began on June 22 with an estimated 30-day completion timeline. Phase I completed July 1.





Appendix to June 2025 Financial Presentation to the Board

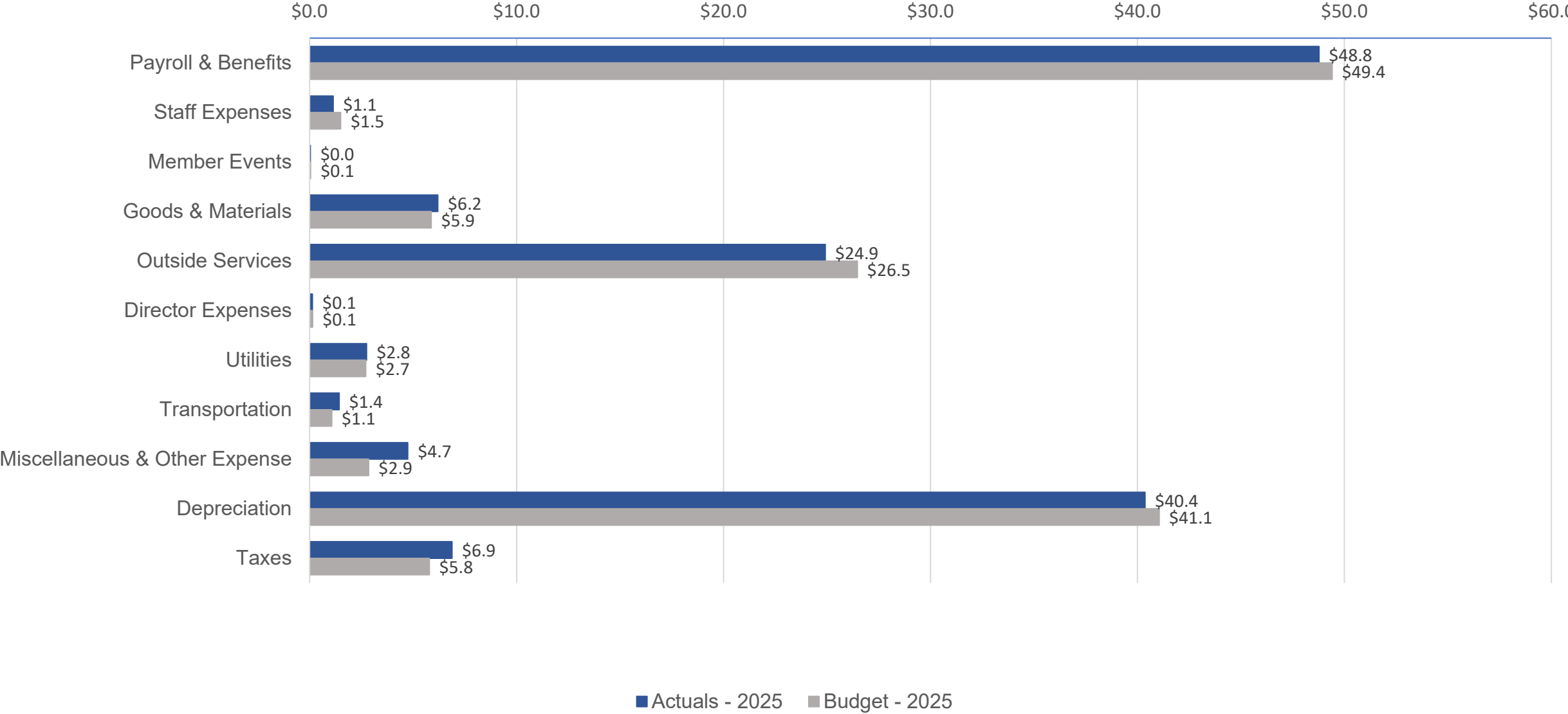
Randy Kruger | Chief Financial Officer

Financial Performance

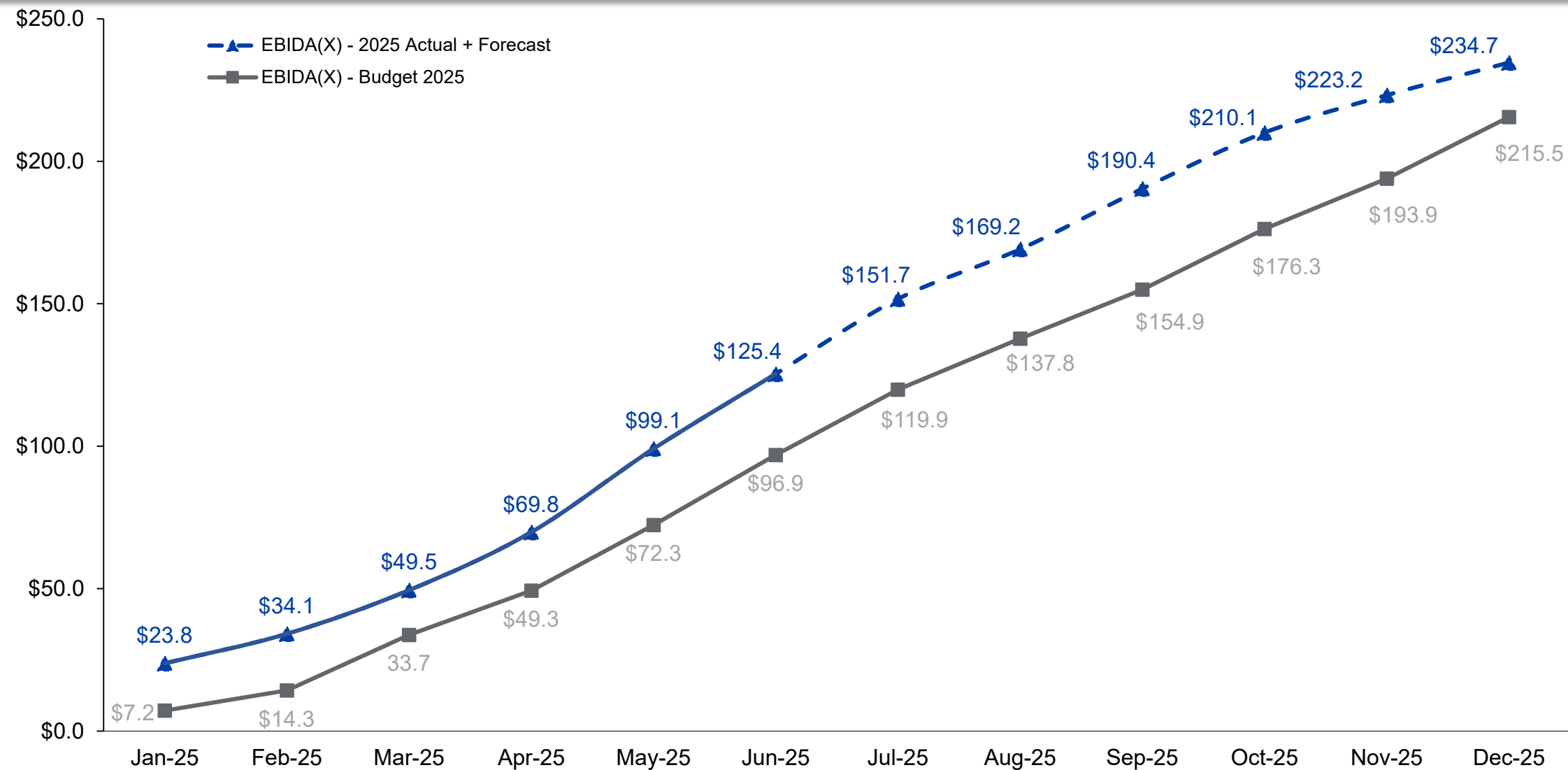
	MTD			YTD			Annual
	Actual	Budget	Prior Year	Actual	Budget	Prior Year	Budget
Gross Margins	\$ 37,979,994	\$ 36,063,340	\$ 33,736,470	\$ 199,188,711	\$ 190,756,623	\$ 177,293,143	\$ 400,301,897
Operating Expenses Ex. Depreciation	18,931,214	15,968,789	15,752,782	97,003,802	95,865,976	90,570,975	193,600,990
Depreciation	6,771,855	7,010,515	8,095,445	40,366,363	41,052,326	48,144,510	83,735,262
Interest Expense	4,410,710	4,598,953	4,396,370	26,839,183	27,439,117	25,507,642	55,458,822
Other Income	(188,107)	(90,000)	(366,731)	(1,304,908)	(540,000)	(2,979,197)	(3,873,000)
Net Margins	\$ 8,054,322	\$ 8,575,083	\$ 5,858,604	\$ 36,284,271	\$ 26,939,204	\$ 16,049,213	\$ 71,379,824
EBIDA	\$ 19,236,887	\$ 20,184,551	\$ 18,350,419	\$ 103,489,817	\$ 95,430,647	\$ 89,701,365	\$ 210,573,907
Over (Under) Collected Revenues	7,048,553	4,338,075	3,176,200	21,890,276	1,357,484	1,202,224	4,966,279
EBIDA(X)	\$ 26,285,440	\$ 24,522,626	\$ 21,526,619	\$ 125,380,093	\$ 96,788,131	\$ 90,903,589	\$ 215,540,186
Total Long-Term Debt							\$ 1,351,315,034
Debt Service							84,882,554
Debt Service Coverage Ratio							2.49
Equity as Percent of Assets							38.5%
Net Plant in Service							\$ 2,292,525,089
Capital Improvement Spend							\$ 238,626,599
Energy Sales kWh	820,375,347	783,152,299	807,886,923	4,048,583,344	3,604,346,817	3,658,388,632	7,910,451,206
Energy Purchases kWh	856,132,488	833,189,101	864,050,185	4,192,356,705	3,834,683,301	3,912,715,114	8,415,380,400
Active Accounts				433,295	436,057	415,482	446,678

Cost of Service (in millions)

YTD Actuals vs Budget through June 2025



EBIDA(X) Year to Date (in millions)



CIP Spend

Construction Category & Description		Non MultiYear YTD Actuals	Brd Appr MultiYear YTD Actuals	Total YTD Actuals	YTD Budget	Variance (Over)/Under Budget	Annual Budget
<u>Distribution</u>							
200	Tie Lines (new construction between existing lines)	4,350,602	71,513	4,422,115	8,832,904	4,410,789	14,793,728
300	Conversions or Line Changes	9,857,653	5,049,952	14,907,605	13,608,845	(1,298,760)	25,001,608
600	Miscellaneous Distribution Equipment	21,547,950	-	21,547,950	27,247,942	5,699,992	54,370,706
700	Other Distribution Items	457,644	-	457,644	195,198	(262,446)	391,422
Distribution Total		\$ 36,213,849	\$ 5,121,465	\$ 41,335,314	\$ 49,884,889	\$ 8,549,575	\$ 94,557,465
<u>Substation</u>							
400	New Substations, Switching Stations and Meter Points	4,532,506	3,051,858	7,584,364	10,212,943	2,628,579	20,969,733
500	Substations, Switching Stations and Meter Point changes	4,839,445	11,929,676	16,769,121	22,191,249	5,422,128	42,471,140
Substation Total		\$ 9,371,951	\$ 14,981,534	\$ 24,353,485	\$ 32,404,192	\$ 8,050,707	\$ 63,440,873
<u>Transmission</u>							
800	New Transmission Lines	175,767	-	175,767	178,258	2,491	1,125,657
1000	Line and Station Changes	2,279,105	8,285,147	10,564,252	20,914,088	10,349,837	49,195,185
Transmission Total		\$ 2,454,872	\$ 8,285,147	\$ 10,740,019	\$ 21,092,346	\$ 10,352,328	\$ 50,320,843
<u>General Plant</u>							
2000	Facilities	3,569,913	3,089,832	6,659,745	12,012,580	5,352,836	17,789,898
3000	Information Technology	341,789	-	341,789	4,151,994	3,810,205	7,017,520
4000	Tools & Equipment	237,638	-	237,638	250,000	12,362	500,000
5000	Vehicles	3,069,608	-	3,069,608	2,500,000	(569,608)	5,000,000
Total General Plant		\$ 7,218,947	\$ 3,089,832	\$ 10,308,779	\$ 18,914,574	\$ 8,605,795	\$ 30,307,418
Accrued WIP & Prepaid Aid		\$ (6,755,440)	\$ -	\$ (6,755,440)	\$ -	\$ 6,755,440	\$ -
Total Capital Improvement Plan Spend		\$ 48,504,178	\$ 31,477,978	\$ 79,982,156	\$ 122,296,001	\$ 42,313,845	\$ 238,626,599

Multi-Year CIP Spend – Distribution and Substation

Construction Category & Project (\$ in thousands)	Prior Years Spend	YTD Actuals	Project Actuals Post Approval	Project Budget	Board Approved Amendments	Amended Project Budget	Remaining Budget
<u>Distribution</u>							
Fairland Make-ready Voltage Conversion	\$ 5,315.2	\$ 1,393.6	\$ 6,708.8	\$ 5,864.3		\$ 5,864.3	\$ (844.5)
HSB Make-ready Voltage Conversion	1,368.2	1,443.7	2,811.8	6,517.0		6,517.0	3,705.2
Convert Burnet to 24.9KV	6,519.7	2,134.7	8,654.5	5,757.7		5,757.7	(2,896.8)
BT30-BU30 Feeder Tie	-	71.5	71.5	4,849.8		4,849.8	4,778.3
Wirtz Voltage Conversion	-	78.0	78.0	4,011.1		4,011.1	3,933.1
Distribution Total	\$ 13,203.1	\$ 5,121.5	\$ 18,324.6	\$ 26,999.9	\$ -	\$ 26,999.9	\$ 8,675.3
<u>Substation</u>							
Lago Vista Install 46.7 MVA Trf	\$ 6,711.1	\$ 6,074.4	\$ 12,785.6	\$ 17,054.5		\$ 17,054.5	\$ 4,268.9
Nameless Install 46.7 MVA Trf	448.0	330.2	778.2	6,086.6		6,086.6	5,308.4
Old Eighty One Construct New Substation	320.8	483.6	804.5	11,522.0		11,522.0	10,717.6
Bee Creek Upgrade T1 and T2 to 46.7 MVA	79.3	266.7	346.0	7,046.5		7,046.5	6,700.6
Ridgmar Install 46.7 MVA Trf	10.1	276.9	286.9	5,101.0		5,101.0	4,814.1
Spanish Oak Install 46.7 MVA Trf	74.6	162.7	237.3	4,657.4		4,657.4	4,420.0
Turnersville Upgrade to T2	0.2	0.3	0.5	3,358.2		3,358.2	3,357.7
Graphite Mine T1 Upgrade	758.3	523.1	1,281.4	4,955.6		4,955.6	3,674.2
Whitestone Upgrade T1 and T2 to 46.7 MVA	690.6	1,092.1	1,782.7	8,272.7		8,272.7	6,490.0
Friendship Upgrade T1 and T2 to 46.7 MVA	1,788.0	3,721.1	5,509.1	5,919.1		5,919.1	410.0
Cedar Valley T1 and T2 Upgrade	198.0	161.0	359.0	4,949.3		4,949.3	4,590.3
Dripping Springs Upg T1 & T2 to 46.7 MVA	4,786.4	(1,402.7)	3,383.7	4,323.4		4,323.4	939.7
T587 BN to MT Remote Ends	357.7	547.6	905.3	3,965.0		3,965.0	3,059.7
New Site 2147 - Construct 46.7 MVA Sub	-	-	-	1,772.1		1,772.1	1,772.1
Florence Construct new 46.7 MVA Sub	7,504.6	2,124.4	9,629.0	10,899.5		10,899.5	1,270.5
RR12-LaCima Construct 46.7 MVA Sub	503.4	443.8	947.1	5,362.3		5,362.3	4,415.1
Andice Install 3rd transformer	4.1	0.5	4.6	13,199.0		13,199.0	13,194.4
Yarrington Install Second Transformer	-	-	-	5,861.5		5,861.5	5,861.5
Transmission RTU Additions - Phase 2	-	176.0	176.0	7,905.6		7,905.6	7,729.6
Substation Total	\$ 24,235.3	\$ 14,981.5	\$ 39,216.8	\$ 132,211.3	\$ -	\$ 132,211.3	\$ 92,994.5

Multi-Year CIP Spend – Transmission and General

Construction Category & Project (\$ in thousands)	Prior Years Spend	YTD Actuals	Project Actuals Post Approval	Project Budget	Board Approved Amendments	Amended Project Budget	Remaining Budget
<u>Transmission</u>							
North Hays Cty Wimberley Transmn	\$ 339.5	\$ -	\$ 339.5	\$ 66,360.7		\$ 66,360.7	\$ 66,021.2
T318 BN-DH Overhaul	741.9	271.1	1,013.0	22,109.1		22,109.1	21,096.1
T587 BN-MT Overhaul	755.3	3,512.1	4,267.4	21,208.7		21,208.7	16,941.3
T360 FS-RU Storm Hardening	265.9	108.8	374.7	15,105.9		15,105.9	14,731.2
T333 LV to NL Overhaul	11,721.8	1,735.7	13,457.5	11,850.5	2,500.0	14,350.5	893.0
T623 TP-CV Storm Hardening	5,023.7	1,560.2	6,583.9	11,697.8		11,697.8	5,113.9
T358 CV-FS Storm Hardening	483.9	158.0	641.9	9,318.9		9,318.9	8,677.0
T380 BD-TV Overhaul	7,465.4	919.0	8,384.4	5,880.0	2,700.0	8,580.0	195.6
T323 PF-MF Overhaul	13,427.0	1.4	13,428.4	13,675.8	1,200.0	14,875.8	1,447.4
T328 BU-MC Upgrade 440MVA	-	18.7	18.7	10,615.7		10,615.7	10,597.0
Transmission Total	\$ 40,224.3	\$ 8,285.1	\$ 48,509.4	\$ 187,823.1	\$ 6,400.0	\$ 194,223.1	\$ 145,713.7
<u>General Plant</u>							
JC District Operations	\$ 3,146.3	\$ 87.7	\$ 3,234.0	\$ 31,451.6		\$ 31,451.6	\$ 28,217.5
Cedar Park Improvements	-	-	-	13,487.6		13,487.6	13,487.6
Liberty Hill Additional yard/warehouse expansion	-	227.7	227.7	13,787.6		13,787.6	13,559.9
Junction Warehouse Yard Expansion	2,732.6	2,774.5	5,507.0	9,135.3		9,135.3	3,628.3
Total General Plant	\$ 5,878.9	\$ 3,089.8	\$ 8,968.8	\$ 67,862.2	\$ -	\$ 67,862.2	\$ 58,893.4