



# Cooperative Update

Julie C. Parsley | Chief Executive Officer  
Eddie Dauterive | Chief Operations Officer  
Randy Kruger | Chief Financial Officer  
Don Ballard | General Counsel  
JP Urban | EVP, External Relations

# April 2023 Cooperative Update

- I. CEO Report
- II. Operations Report
- III. Financial Report
- IV. Workforce and Governance Report
- V. Community and Member Engagement
- VI. Appreciation and Look Ahead
- VII. Appendix



# Legislative Update

Electric Market Reform is a top priority of the 88<sup>th</sup> Texas Legislature:

- SB 6 (Schwertner) Creates the Texas Energy Insurance Program
  - *Engrossed to House*
- SB 7 (Schwertner) Allocates cost of ancillary services based on reliability
  - *Engrossed to House*
- SB 2012 (Schwertner) PCM Guardrails
  - *Pending in House State Affairs Committee*
- HB 4831 (Hunter) PCM Guardrails
  - *Pending in House State Affairs*



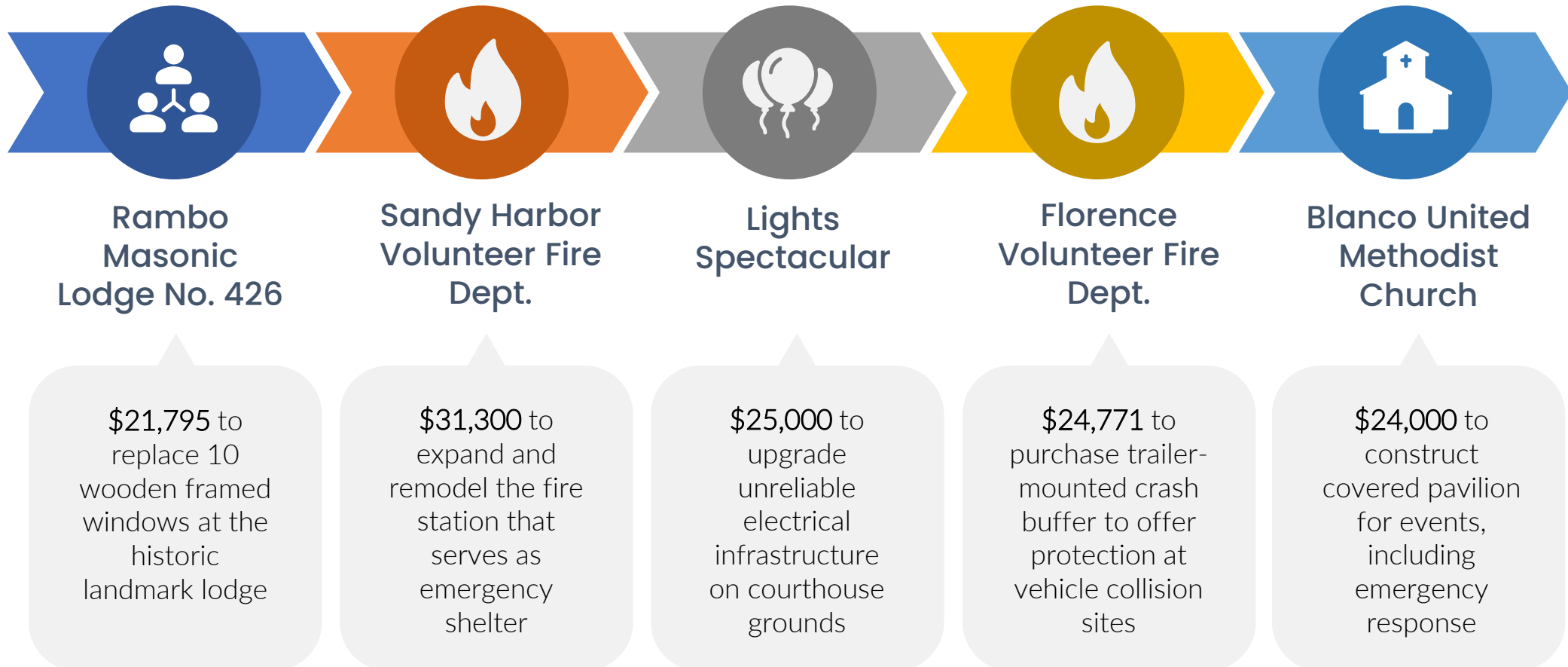
# Regulatory Update

- The PUC is relying on direction from the Legislature prior to its implementation of long or near-term market solutions, including the Performance Credit Mechanism (PCM)
- The PUC asked ERCOT to recommend “bridge solutions” for improved resiliency until a longer-term solution can be implemented
- After considering several proposals and market participant feedback, the ERCOT board voted earlier this week to recommend the PUC adopt multi-step floors to the Operating Reserve Demand Curve (ORDC)
- The PUC is expected to consider this at their next open meeting

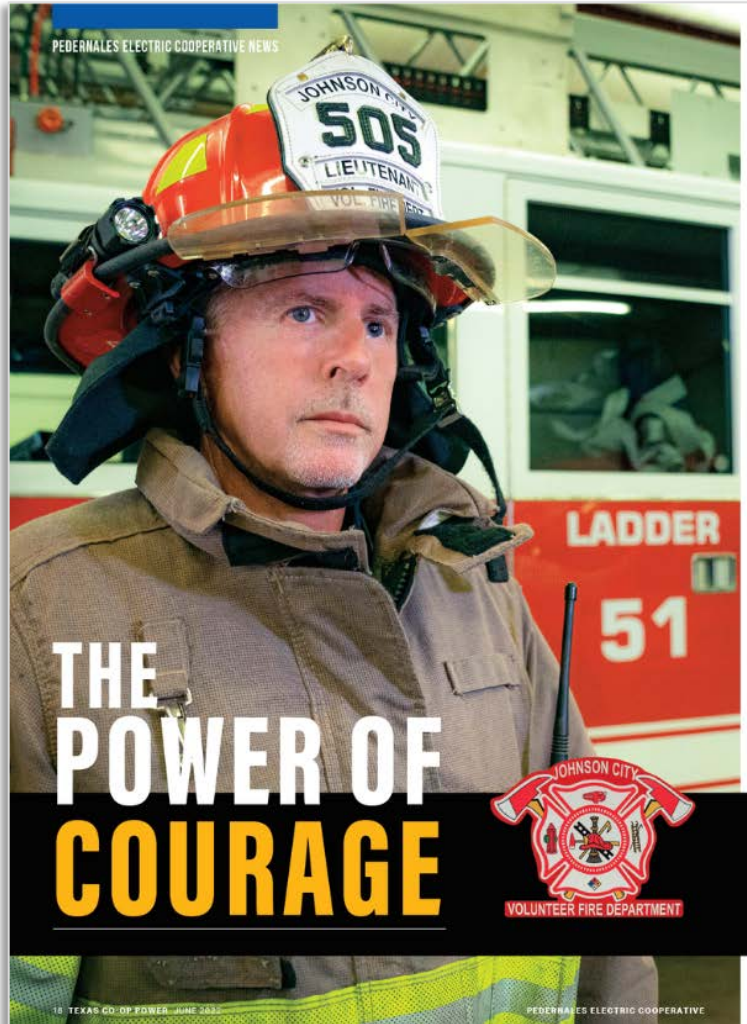




## Nearly \$127,000 in CDPP Support



# External Relations Receives National Awards



PEDERNALES ELECTRIC COOPERATIVE NEWS

## THE POWER OF COURAGE


JOHNSON CITY VOLUNTEER FIRE DEPARTMENT

WHAT WOULD YOU GIVE TO MAKE A **CHANGE?**

For less than **\$1 a month**, you can help support local nonprofits by rounding up your bill through PEC's Power of Change Program.

Together with other generous members, your donations can fund important projects at organizations that serve your community — like the Johnson City Volunteer Fire Department. They used a \$5,000 PEC grant to purchase rescue equipment capable not only of changing lives, but saving them.

Change lives here.  
Join today at [pec.coop/change](http://pec.coop/change).




Johnson City Volunteer Fire Department President Ray Bible has been with the department for almost three and a half decades. Like the other volunteers, he feels called to serve his community. When responding to emergencies, Ray and his team use their bravery, skills, and equipment to save lives.

"We have a great community around us, and it shows," Bible said. "Whenever we're in need, something happens and we're able to get it done."

Thanks to PEC members enrolled in Power of Change, they will soon have a new life-saving tool in their hands. They've used their \$5,000 grant to purchase equipment capable of keeping their extrication tools fully charged on the truck during rescues. Keeping those tools charged will save time when cutting people out of vehicles — time that could very well be the difference between life and death.

"Being in the position to get this grant thanks to community support is amazing to me," Bible said. "Imagine what we could do for other organizations if everyone who could participate in this program did."



**JOHNSON CITY VFD:**  
**POWER of CHANGE** GRANT RECIPIENT

18 TEXAS CO-OP POWER JUNE 2022 PEDERNALES ELECTRIC COOPERATIVE

PEC.COOP • 888-554-4732 JUNE 2022 TEXAS CO-OP POWER 19



- Most Innovative Use of Digital Communication: Ethics survival videos
- Best Total Communication Program: Power of Change – Summer 2022 marketing campaign





# *85<sup>th</sup> Anniversary* **PEDERNALES ELECTRIC CO-OP**

**“85 Years of  
Power-Full Memories”**



# Appreciating PEC Lineworkers

**National Lineman  
Appreciation Day  
April 18**





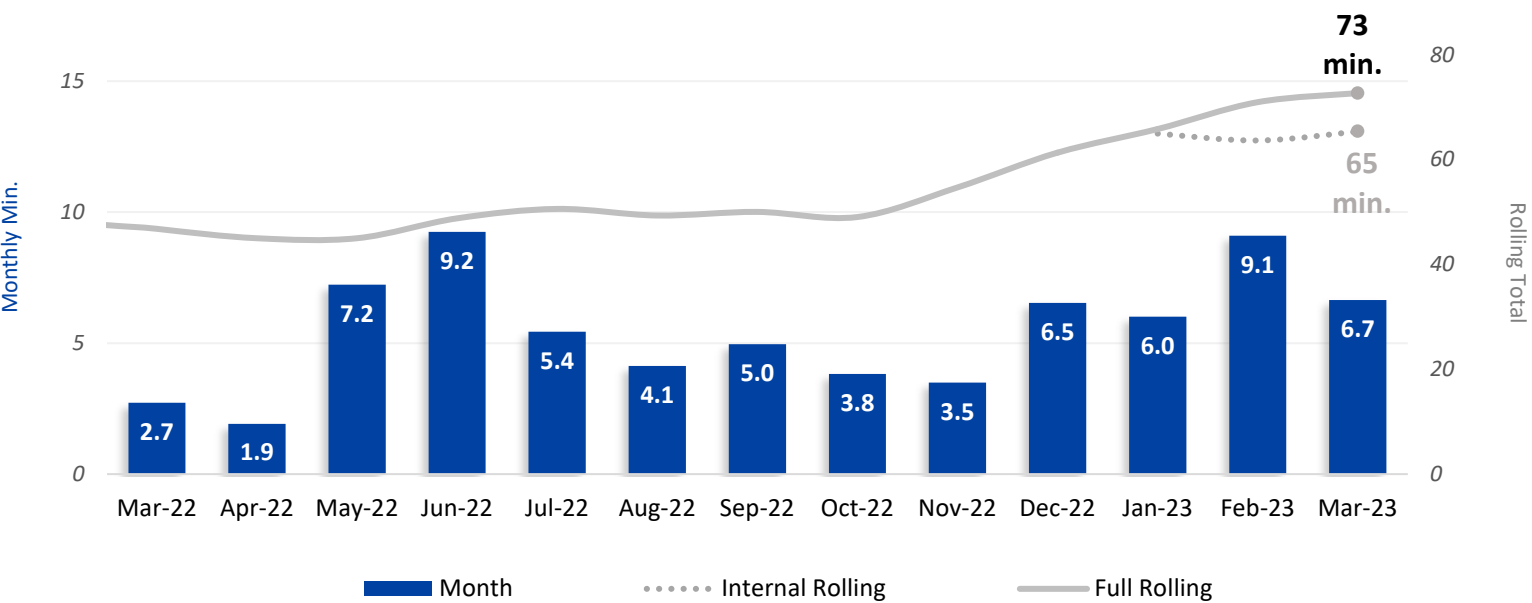


# Operations Report

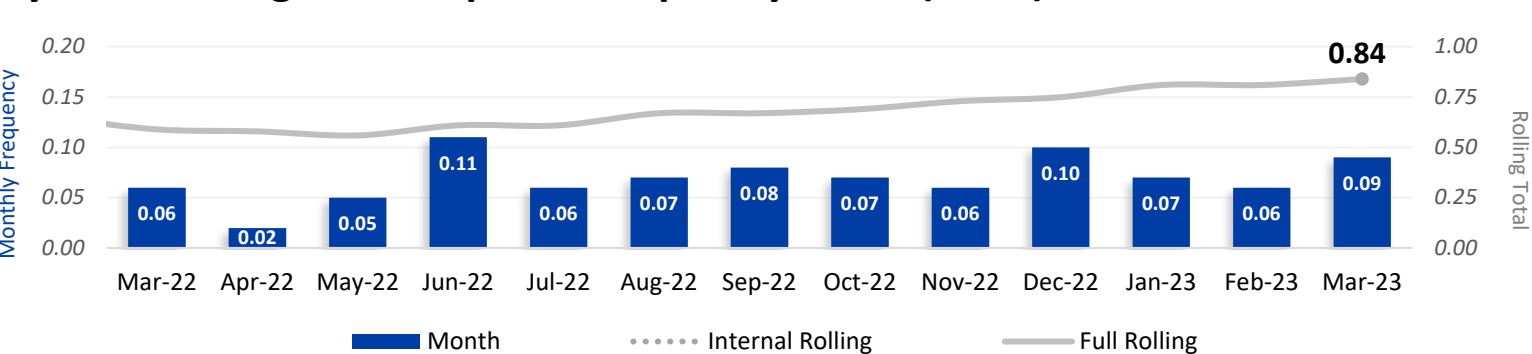
Eddie Dauterive | Chief Operations Officer

# Reliability

System Average Interruption Duration Index (SAIDI)



System Average Interruption Frequency Index (SAIFI)

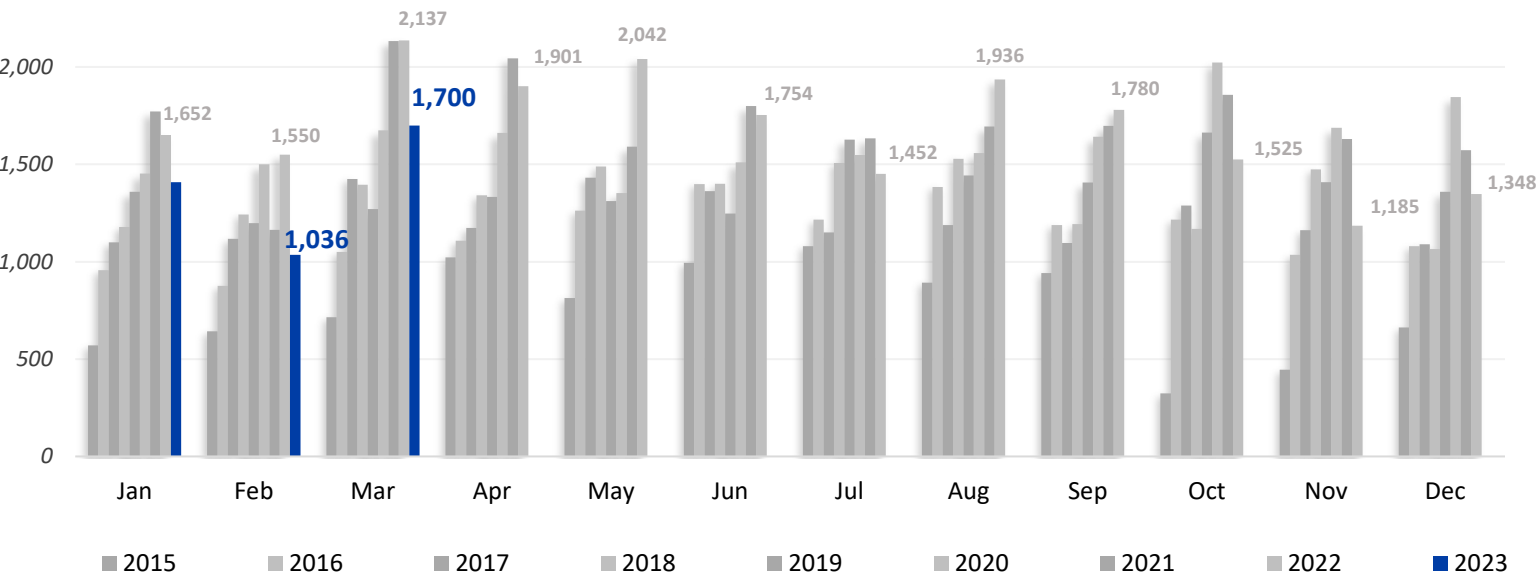




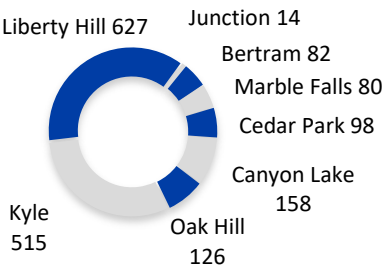
# System Growth

## Line Extensions Completed

2019: 16,640    2020: 19,458    2021: 20,592    2022: 20,262    2023 YTD: 4,144



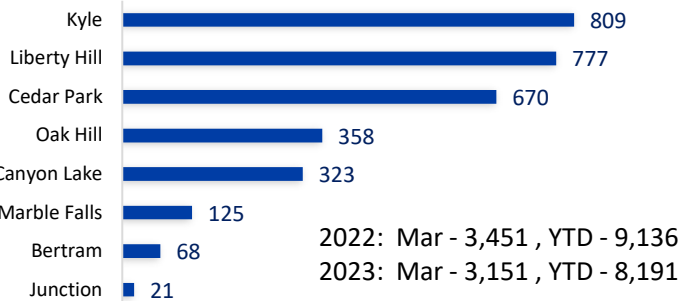
## Line Extensions Per District (1,700)



**Miles of Distribution Line:**  
Underground: 6,868 (28%)  
Overhead: 17,642 (72%)  
Total: 24,510

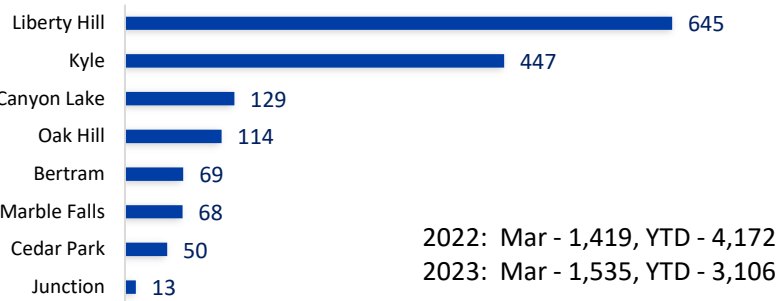


## Member Applications (3,151)



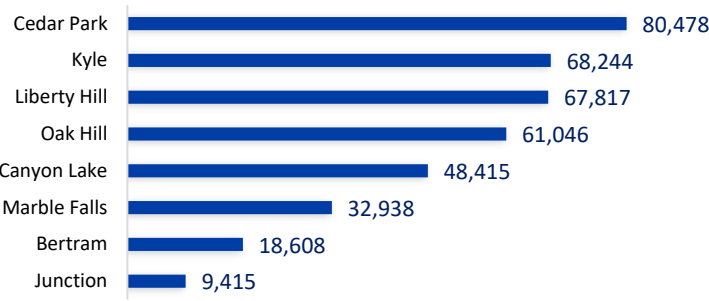
2022: Mar - 3,451, YTD - 9,136  
2023: Mar - 3,151, YTD - 8,191

## Meter Growth (1,535)



2022: Mar - 1,419, YTD - 4,172  
2023: Mar - 1,535, YTD - 3,106

## Meter Totals (386,961)

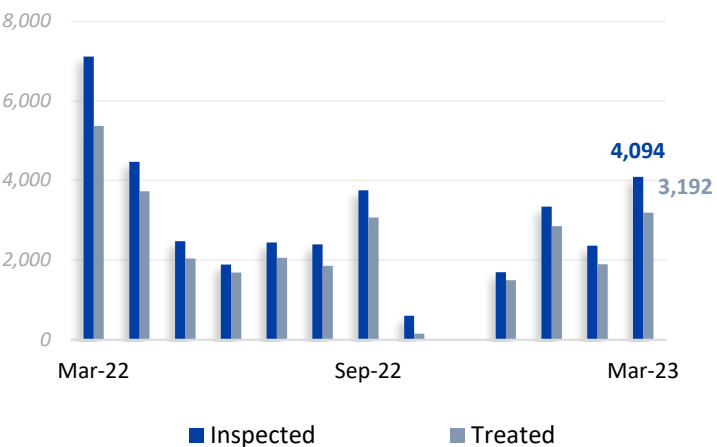


# Distribution Maintenance

## Pole Testing & Treatment (PTT)

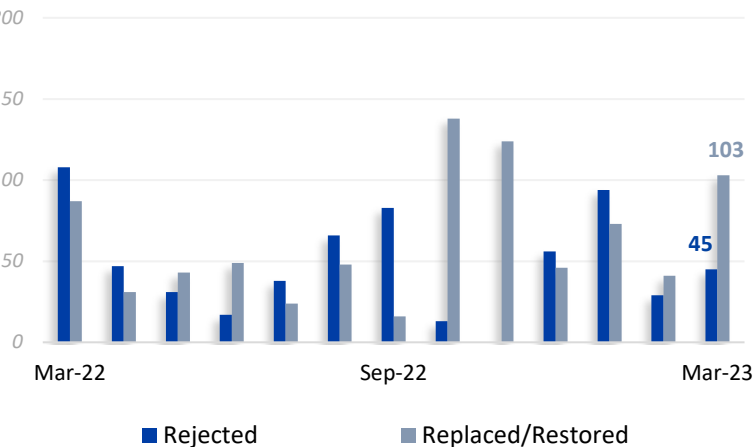
### Poles Inspected & Treated

2022 YTD: Inspections - 17,324    Treated - 13,342  
2023 YTD: Inspections - 9,081    Treated - 7,944



### Poles Rejected & Replaced/Restored

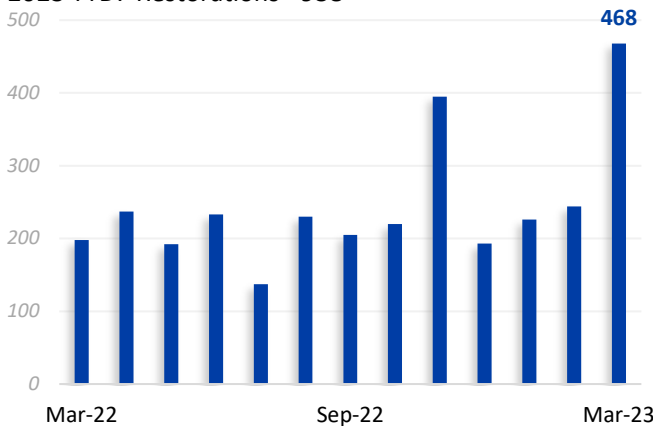
2022 YTD: Rejected - 308, Restored - 164  
2023 YTD: Rejected - 168, Restored - 217



## Underground Equipment

### URD Pad Restorations

2022 YTD: Restorations - 661  
2023 YTD: Restorations - 938



## Vegetation Management

### Wildland Urban Interface (WUI) Audits:

Type	Total C&D	Jan	Feb	Mar
C&D WUI 3 Phase	2,260	99	420	354
C&D WUI 1 Phase	12,514	401	116	269
C&D Other 3 Phase	2,004	66	35	43
C&D Other 1 Phase	12,590	454	228	75
All C&D	29,368	1,021	799	741

## LiDAR Assessment

Next Flyover  
**April 2023**

Data Available  
**August 2023**





# Cranes Mill Conversion

## Phase 1: March 14 – 15

## Phase 2: March 28 - 29

### Goals for System Improvement:

- Upgrade and convert the Cranes Mill T2 transformer at the substation from 7,200-14.4KV
- This will increase the voltage and overall system reliability

### Schedule:

- March 14-15: Convert approx. 1,000 transformers
- March 28-29: Complete T2 conversion
- May 9-10: Complete follow-up work on T1

### Support Crews:

- 150 linemen from 8 service districts and teams from Technical Services and substation crews, M&S Engineering, and Canyon Lake staff

### Impact to Membership

- Scheduled outages occurred without incident
- Members were notified through several communications: letters, notices, robo-calls, emails, and SMS



# Internal Lineman's Rodeo

**Wednesday, April 19, 2023**  
**Spring Branch**

## Overall Journeyman Teams

- Darren Donhauser, David Hernandez, Jason Dean (Canyon Lake/Junction)
- Caleb Brodock, Garrit Afman, Thomas Logan (Canyon Lake)
- Tyler Horn, Justin Ferry, Marshall Verette (Marble Falls)
- Charley Goines, Auston Shipley, Jayce Johnson (Kyle)
- Cooper Johnson, Jared Schmitt, Craig Hernandez (Kyle)

## Apprentices

- |                                |                                |
|--------------------------------|--------------------------------|
| • Daniel Wilson (Cedar Park)   | • Zackary McFee (Canyon Lake)  |
| • Zack Gough (Canyon Lake)     | • Matt Romero (Canyon Lake)    |
| • Matt Mabry (Cedar Park)      | • Blaine Preuit (Liberty Hill) |
| • Colton Harris (Cedar Park)   | • Quentin Schulze (Junction)   |
| • Justin Carbajal (Cedar Park) | • Chayton Boyd (Cedar Park)    |







# March 2023 Financial Report

Randy Kruger | Chief Financial Officer

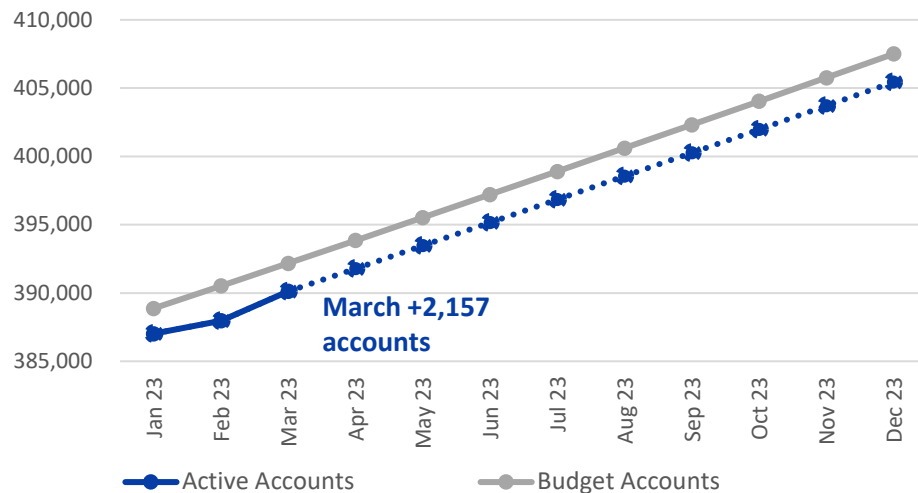
### 3. Financial Report

# Finance at a Glance – March 2023

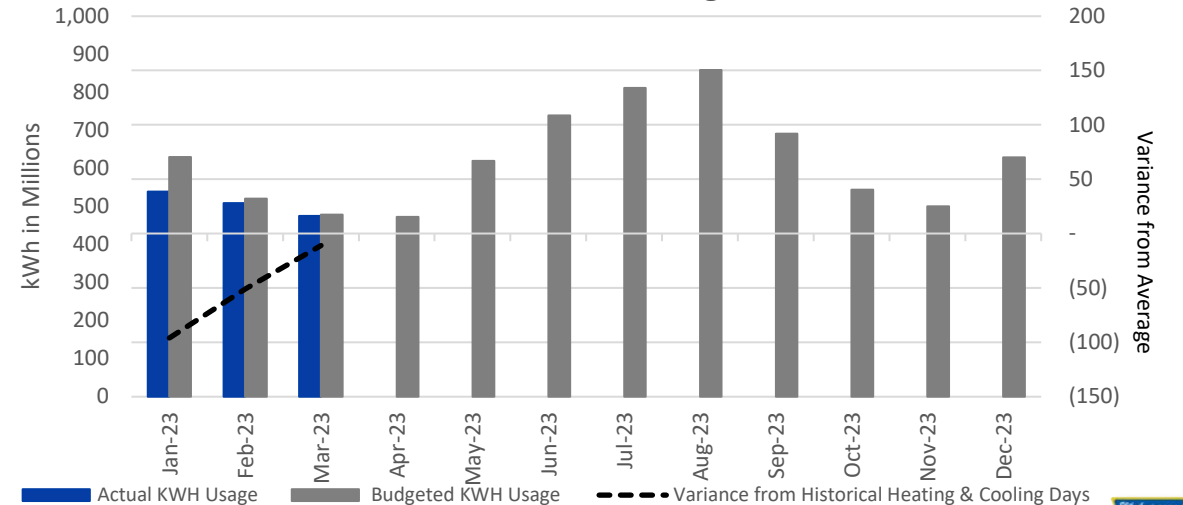
	MTD (\$ in millions)			YTD (\$ in millions)		
	Actual	Budget	Variance	Actual	Budget	Variance
<b>MWH Sold</b>	474,507	478,106	(3,598)	1,521,691	1,627,821	(106,129)
<b>Gross Margins</b>	\$ 26.3	\$ 26.0	\$ 0.3	\$ 83.6	\$ 82.3	\$ 1.2
<b>Net Margins</b>	\$ 2.7	\$ (1.0)	\$ 3.7	\$ 1.9	\$ 4.4	\$ (2.5)
<b>EBIDA</b>	\$ 14.1	\$ 11.8	\$ 2.3	\$ 36.3	\$ 42.9	\$ (6.6)
<b>Revenue O/(U)</b>	\$ 2.5	\$ 0.6	\$ 1.8	\$ 0.6	\$ (1.6)	\$ 2.2
<b>EBIDA(X)</b>	\$ 16.6	\$ 12.4	\$ 4.1	\$ 36.9	\$ 41.2	\$ (4.4)

	Liquidity Coverage
Cash & Marketable Securities	\$ 2,696,205
Short Term Facilities	505,000,000
Less: Short Term Borrowings	11,993,467
Available Liquidity	\$ 495,702,738
<b>Liquidity Coverage (Days)</b>	<b>259</b>

Active Account Growth



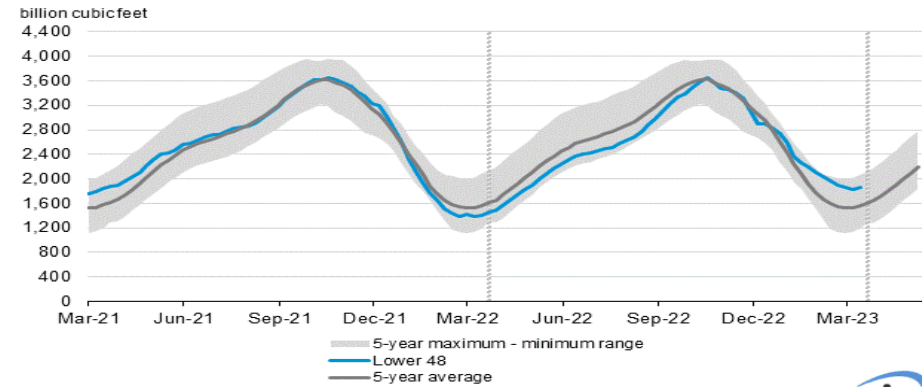
Weather and kWh Usage



### 3. Financial Report

# Power Market Fundamentals

Working gas in underground storage compared with the 5-year maximum and minimum

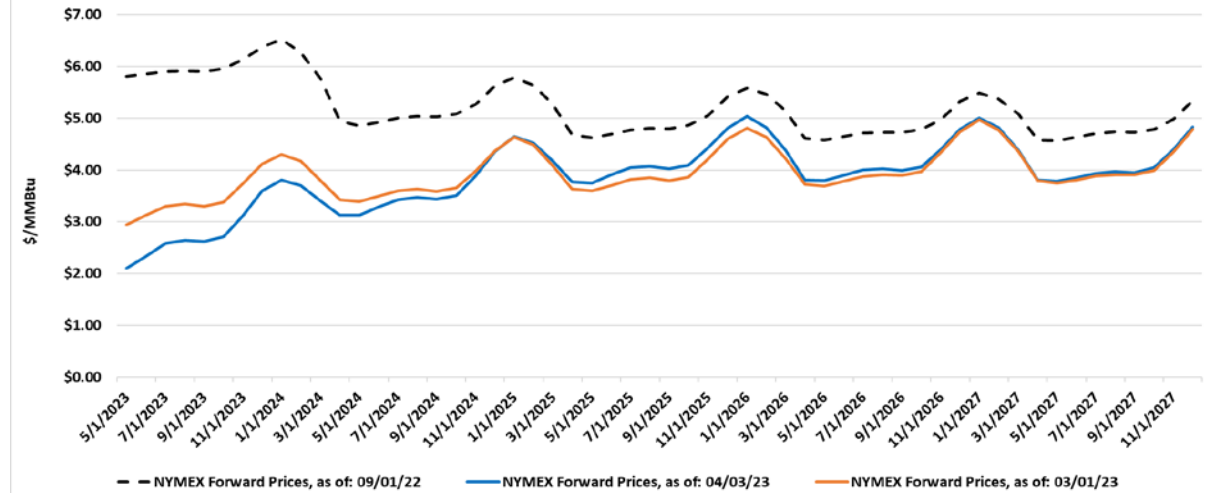


Data source: U.S. Energy Information Administration

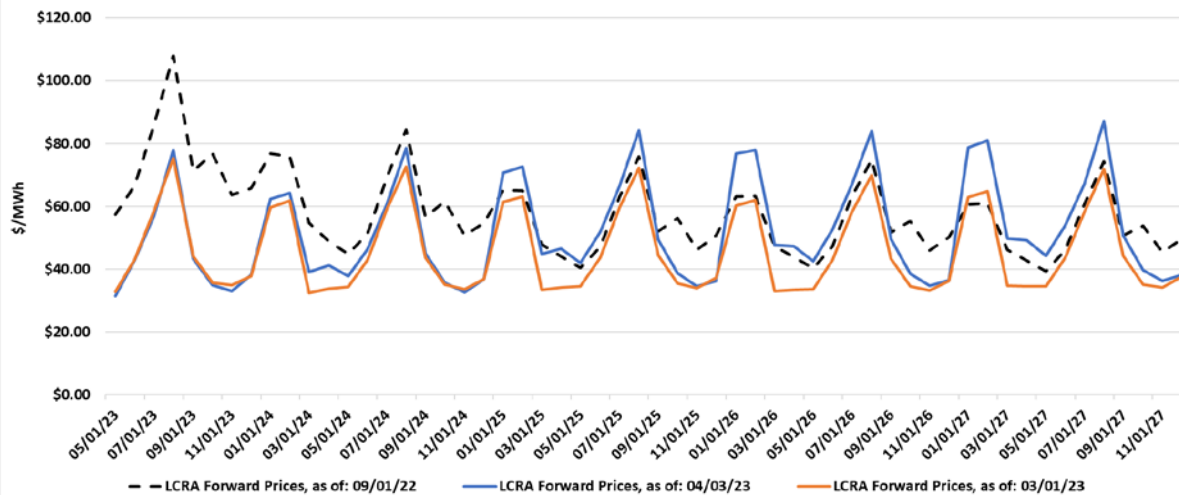
Note: The shaded area indicates the range between the historical minimum and maximum values for the weekly series from 2018 through 2022. The dashed vertical lines indicate current and year-ago weekly periods.



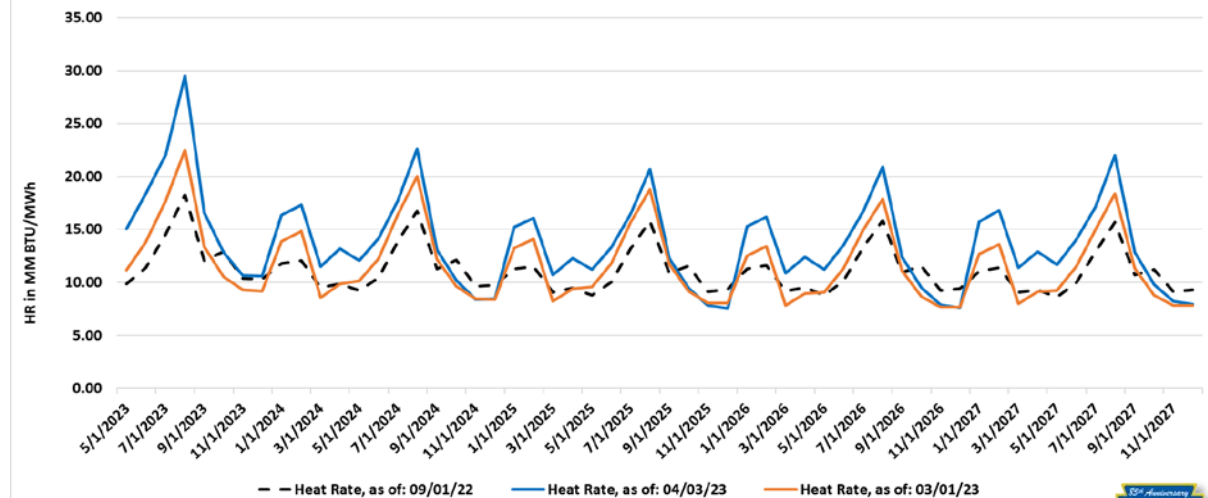
Natural Gas Forward Prices



Power Forward Prices



Forward Heat Rates

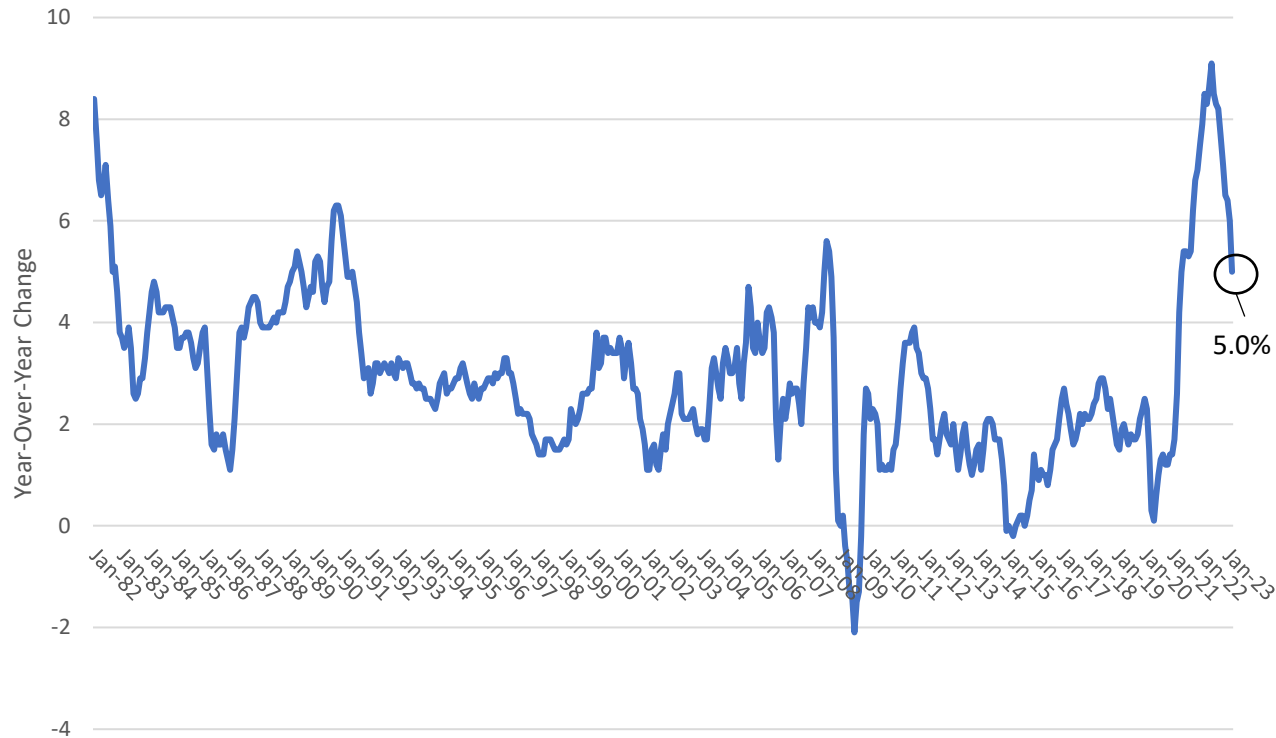




# Inflation

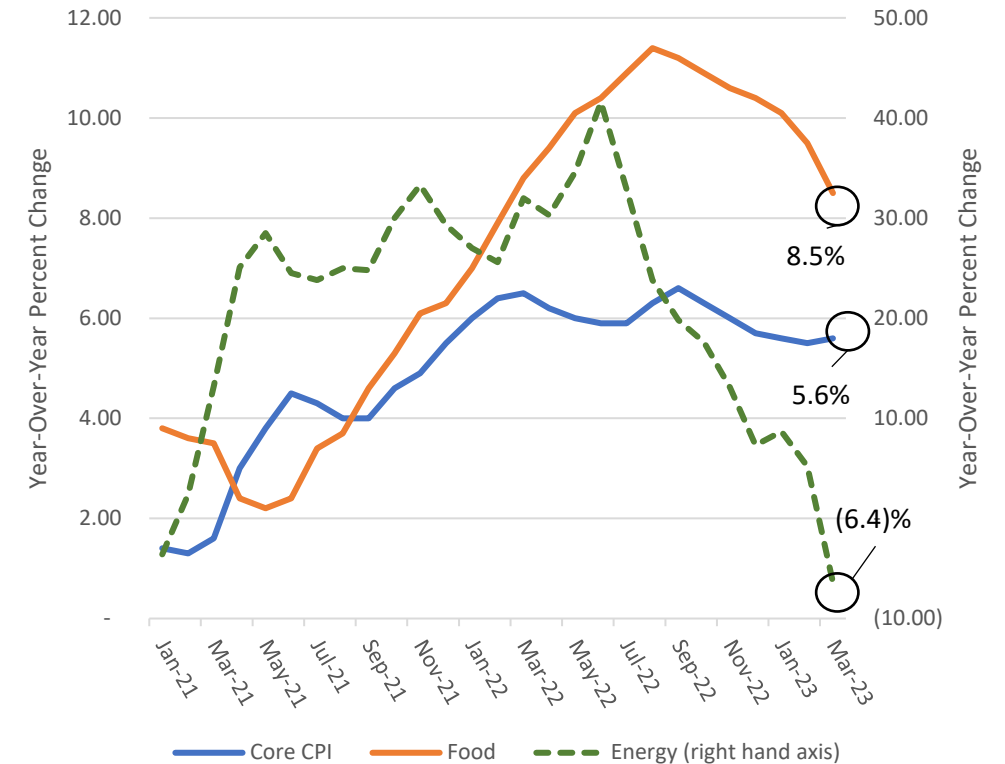
Overall CPI continues downward trend; Core CPI upticks slightly driven by shelter costs; Energy prices decline YoY driven by transportation fuel (-17.4%) and fuel oil (-14.2%) offset by increases to electricity (+10.2%) and utility gas services (+5.5%) prices

CPI Jan 1982 to Mar 2023



Source: U.S. Bureau of Labor Statistics

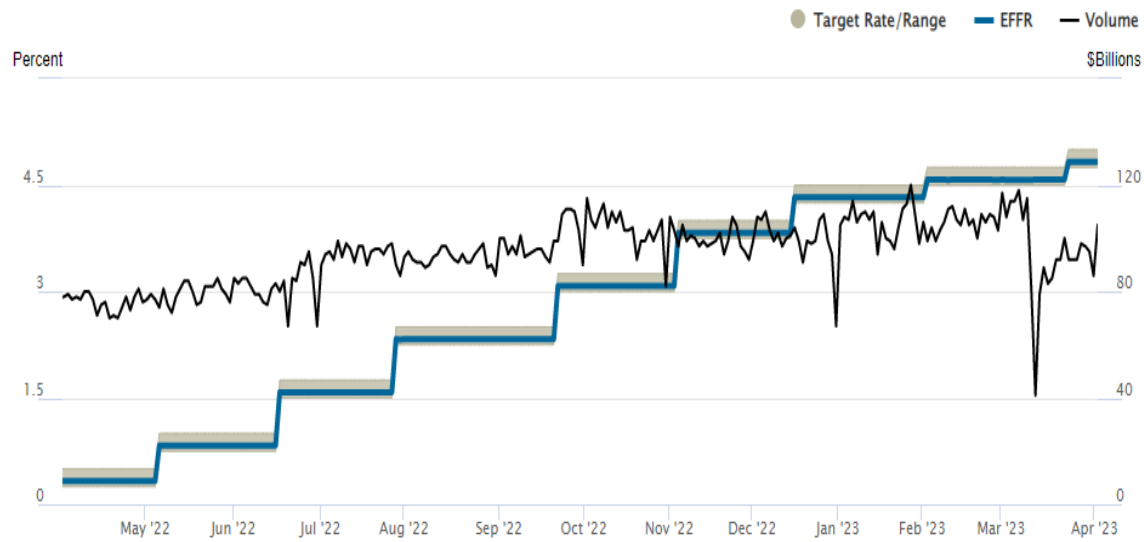
Core CPI, Food and Energy  
Jan 2021 to Mar 2023



Source: U.S. Bureau of Labor Statistics

# Interest Rates

## Federal Funds Rate



Source: Federal Reserve Bank of New York

## 10-Year Note



Source: *The Wall Street Journal* 4/4/2023



# Workforce and Governance Report

Don Ballard | General Counsel



# 2023 Election Timeline

## April 21

- Approval of candidates on ballots

## May 16 - June 9

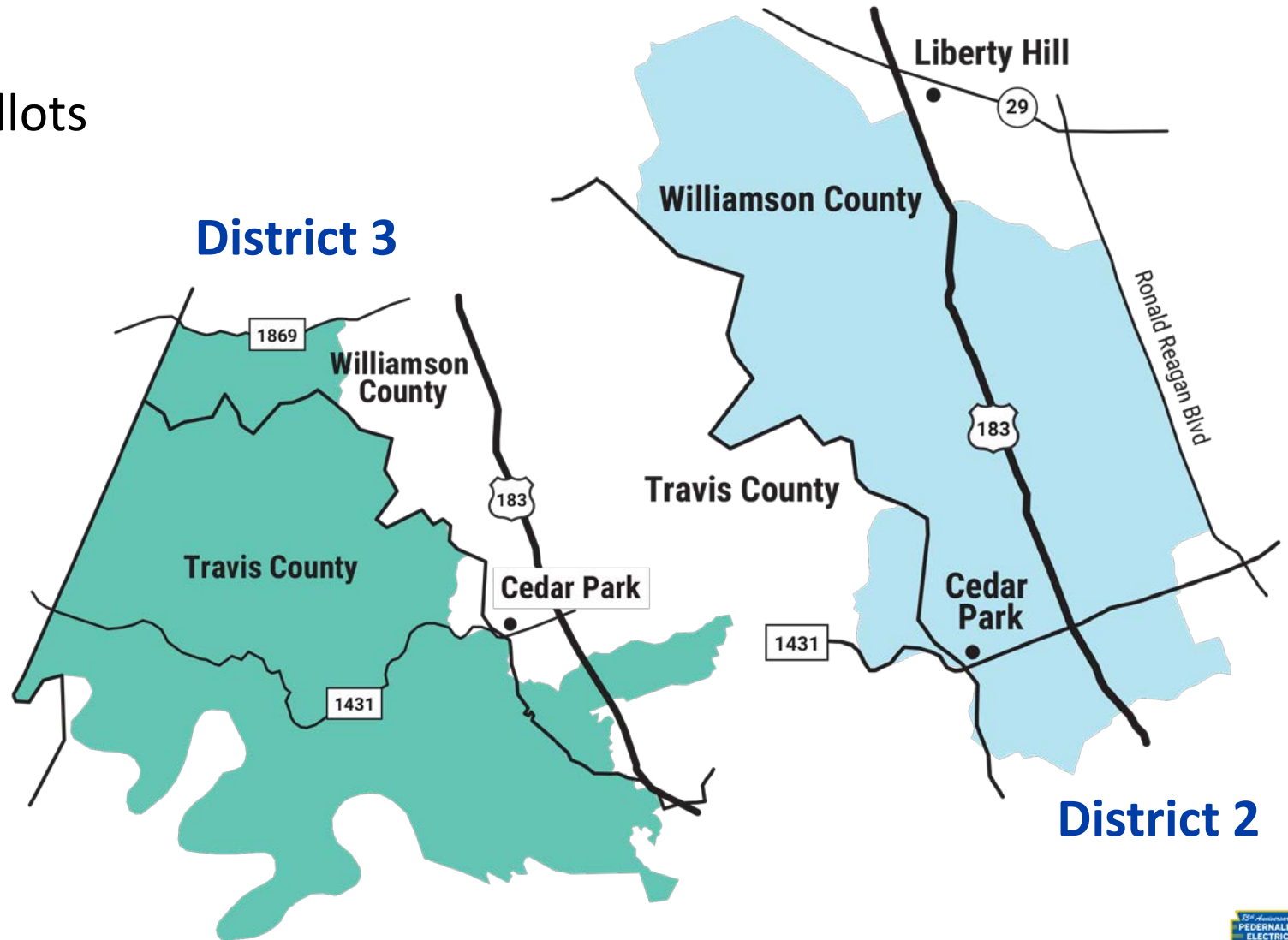
- Voting open

## June 13

- Election results released

## June 16

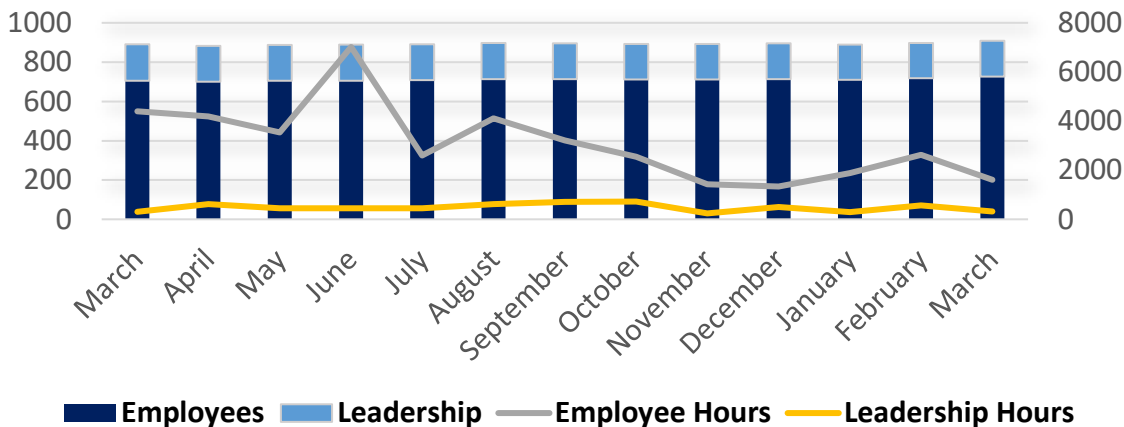
- PEC Annual Meeting;  
board directors seated



# March Employee Development

## Employee Training Overall

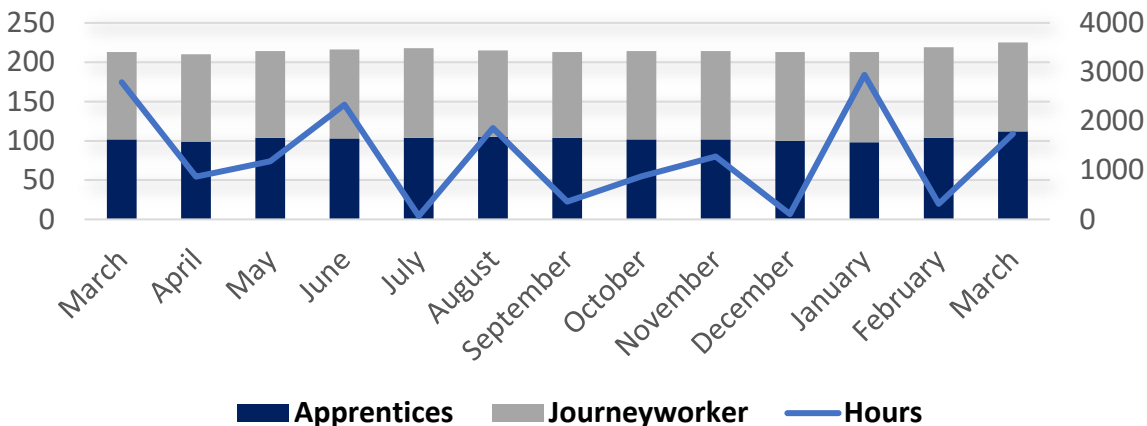
Hours for employees and leadership overall by month



- Six (6) apprentices completed Year Three Rubber Glove Certification; Year Three class also passed exams with perfect scores
- Year Two apprentices focused on troubleshooting open, closed, and paralleling banks.
- Employee training related to performance appraisals and new manager training offered

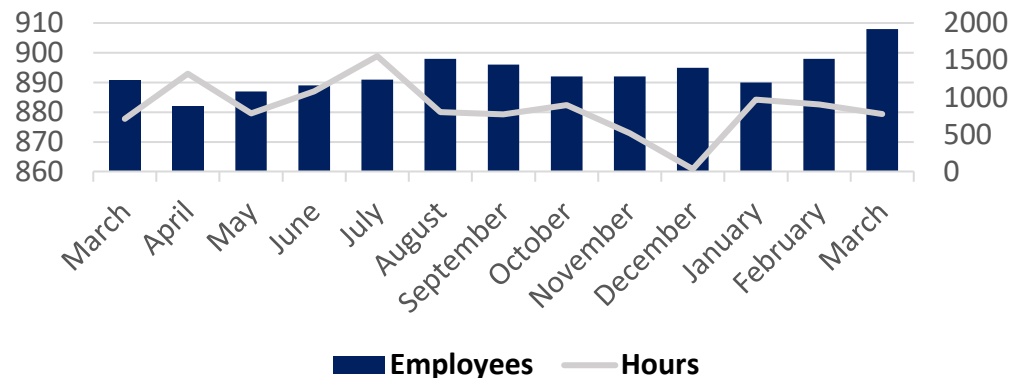
## Apprentices & Journeyworker Training Hours

Hours trained for Apprentices & Journeyworkers per month



## Safety Training Hours

Safety training hours per month





# PEC and LCRA Partner to Enhance Communities



## Steps Forward Day April 14

- Dripping Springs
- New Braunfels
- Wimberley







# Community and Member Engagement

JP Urban EVP, External Relations

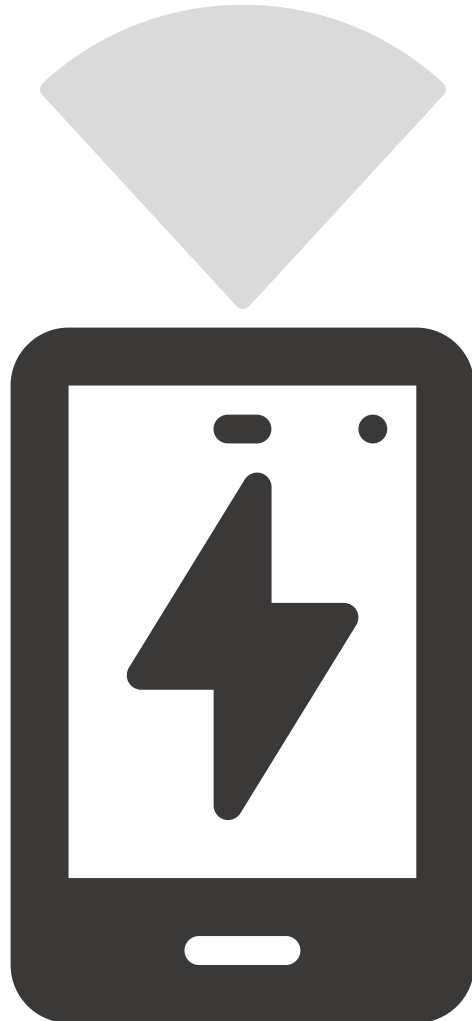
# Prepare for Spring Storms

**Stay ready  
this storm season**

[pec.coop/outages](http://pec.coop/outages)



# Outage Information at Your Fingertips



## Text “25022” for PEC

### Report an Outage

Using your mobile  
number, report and  
confirm outages

### Receive Updates

As outage restoration  
progresses, get  
updates sent to you

---

## Update your mobile today

### Log in to SmartHub

Add your mobile to  
your communications  
preferences

### Call 888-554-4732

An agent will help  
you update your  
account



# 2023 Youth Tour Delegates

- 10 local high school students will visit Washington, D.C. this June
- Selected from more than 120 applications

“Should lineworkers be considered first responders?”

“Then-Congressman LBJ worked to bring electricity to the rural Hill Country. What act, invention, or development would you create to do good for your community and “go viral?”





# Youth Tour Alums





# Appreciation and Look Ahead



# Employee Appreciation Continues



Bertram/Marble Falls Spring 2023 Employee Appreciation Event



In 2023, we are continuing regular employee appreciation events to bring staff together to reconnect and reflect on the Cooperative Spirit



# Employee Kudos\*



**Angel Almanza**  
Member Relations  
Agent  
*Oak Hill*



**Carole Hall**  
Member Relations  
Analyst  
*Bertram*



**Jeremy Castro**  
Journeyworker  
*Kyle*



**Debbie Nix**  
Distribution  
Planner 2  
*Marble Falls*



**Carrie Garrett**  
Distribution  
Planner 2  
*Liberty Hill*

*\*These were selected from the hundreds of kudos PEC receives each month*





# Appendix Pages From Operations and Financials Reports



# Operations Report - Appendix

Eddie Dauterive | Chief Operations Officer

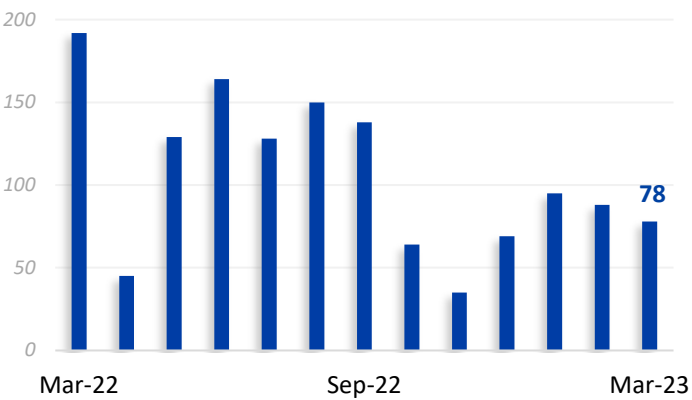
April 21, 2023

# Distribution Maintenance

## Technical Services

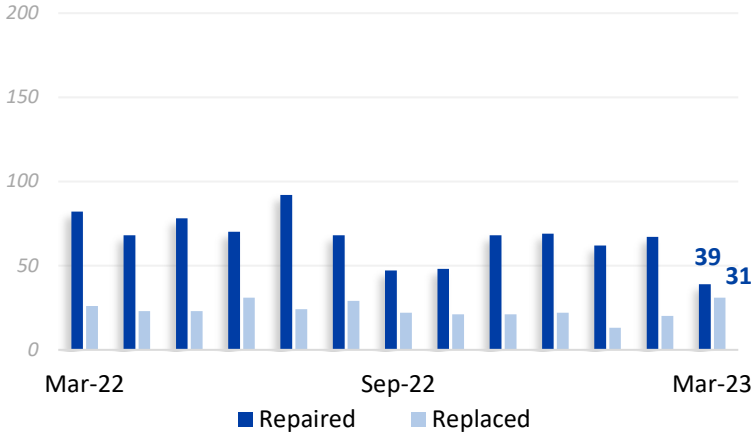
### Equipment Inspections

2022 YTD: 354  
2023 YTD: 261



### Equipment Repaired & Replaced

2022 YTD: Repaired - 218, Replaced - 59  
2023 YTD: Repaired - 168, Replaced - 64



### Pole Contacts

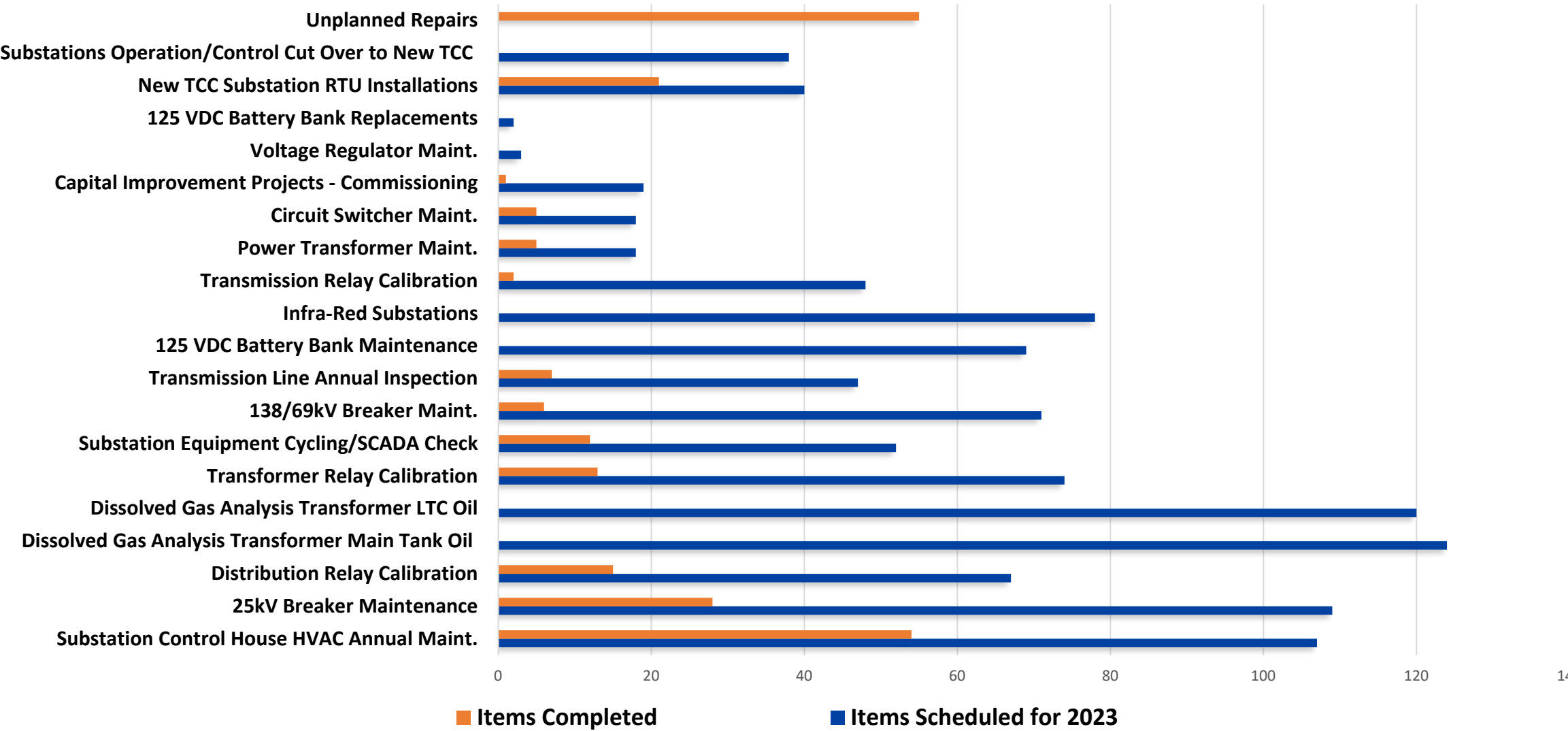
#### Applications Received & Permits Issued

2022 YTD: Received - 75 , Inspected - 87, Approved - 78  
2023 YTD: Received - 47, Inspected - 67, Approved - 36



# Substation & Transmission Maintenance

## 2023 Itemized Maintenance By Equipment





# Planning Engineering Projects

## Overall Status

Project	Completion Date	Percent Complete
Load Projections Study	Jan 2023	100%
2023 CIP Project Maps	Feb 2023	100%
Capacitor Settings	Mar 2023	90%
20 Year Plan	Apr 2023	96%
4CP Study	Apr 2023	80%
Summer Contingency	May 2023	5%
UFLS Study	May 2023	0%
CIP (1st draft) Study	Jun 2023	1%
CIP Study Completed	Aug 2023	0%
Mock UFLS Study	Dec 2023	0%
PEC System Arc Flash Study	Dec 2023	1%
Winter Contingency	Dec 2023	0%
2 Year System Protection Coordination Review	Dec 2023	65%

# Substation Engineering Projects

## Overall Status

District	Phase		Start Date	Completion Date	Percent Complete				
Cedar Park	Construction	Upgrade bus to double-bus double-breaker	Apr-21	Apr-23	97%	<div></div>			
Oak Hill	Construction	Upgrade line protection relay panels	Apr-21	May-24	65%	<div></div>			
Junction	Engineering	Upgrade transformer and add line breakers	May-21	Oct-23	78%	<div></div>			
All Districts	Engineering/ Construction	Upgrade circuit switches and relay protection on three mobile substations	Nov-21	Jun-23	85%	<div></div>			
Liberty Hill	Engineering	Construct new substation	Dec-21	Dec-23	64%	<div></div>			
Liberty Hill	Construction	Add third power transformer	Apr-22	Jun-23	81%	<div></div>			
Kyle	Construction	Add third power transformer	May-22	May-23	85%	<div></div>			
Bertram	Engineering	Upgrade power transformer	Jun-22	Sep-23	66%	<div></div>			
Cedar Park	Engineering	Make improvements to ground grid for reliability	Aug-22	Apr-23	100%	<div></div>			
All Districts	Engineering	Develop transmission protection philosophy for protective settings	Jan-23	Sep-23	33%	<div></div>			
All Districts	Engineering	Develop configuration for engineering to have access to RTU settings	Nov-22	Dec-23	0%	<div></div>			
Oak Hill	Engineering	Upgrade power transformer	Feb-23	Jan-25	8%	<div></div>			
Liberty Hill	Engineering	Upgrade power transformer	Feb-23	May-24	12%	<div></div>			
Cedar Park	Engineering	Add third power transformer	Feb-23	Nov-24	9%	<div></div>			
Kyle	Engineering	Construct new substation	Feb-23	Dec-24	9%	<div></div>			
Oak Hill	Engineering	Add feeder breaker and feeder	Mar-23	Dec-23	11%	<div></div>			
Oak Hill	Engineering	Add feeder	Mar-23	Dec-23	11%	<div></div>			
Bertram	Engineering	Add circuit switcher on power transformer	Mar-23	Dec-23	12%	<div></div>			

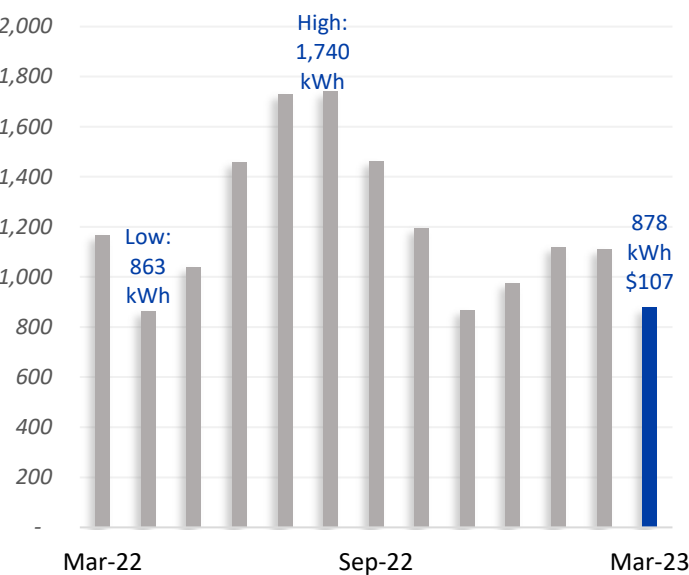
# Transmission Projects

## Overall Status

District	Phase	Description	Completion Date	Percent Complete				
Canyon Lake	Closeout	Increase clearance to meet USACE requirements	Dec 2022	99%				
Marble Falls and Oak Hill	Construction	Respacing shield wire and conductor to reduce outage vulnerability during extreme weather	Jan 2023	100%				
Marble Falls and Cedar Park	Construction	Reconductor (Phase 1)	Feb 2023	99%				
All Districts	Planning	NERC required annual planning assessment	Feb 2023	100%				
Oak Hill	Construction	Harden transmission line to meet severe weather requirements	Mar 2023	99%				
Kyle	Engineering	Harden transmission line to meet severe weather requirements	Apr 2023	60%				
Cedar Park	Engineering	Harden transmission line to meet severe weather requirements	Dec 2023	45%				
Liberty Hill	Engineering	Add Fiber to existing transmission line	Dec 2023	20%				
Liberty Hill	Engineering	Harden transmission line to meet severe weather requirements	May 2024	45%				
Oak Hill	Engineering	Harden transmission line to meet severe weather requirements	Dec 2024	30%				
Marble Falls and Cedar Park	Engineering	Overhaul (Phase 2)	Dec 2025	15%				
Cedar Park	Engineering	Harden transmission line to meet severe weather requirements	Dec 2025	20%				
Oak Hill	Engineering	Developer funded transmission line relocation	On Hold	25%				

# Member Relations

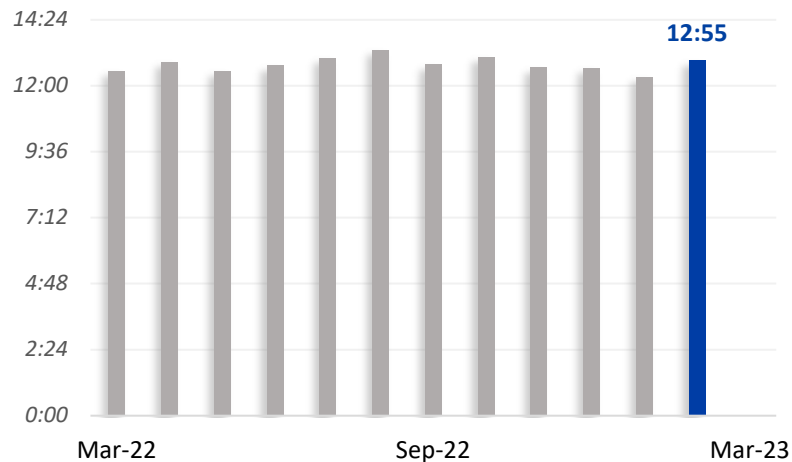
## Average Residential Usage



## Member Contacts

### Average Handle Time

Mar. Phone Contacts: 26,361  
Mar. Office Contacts: 2,793

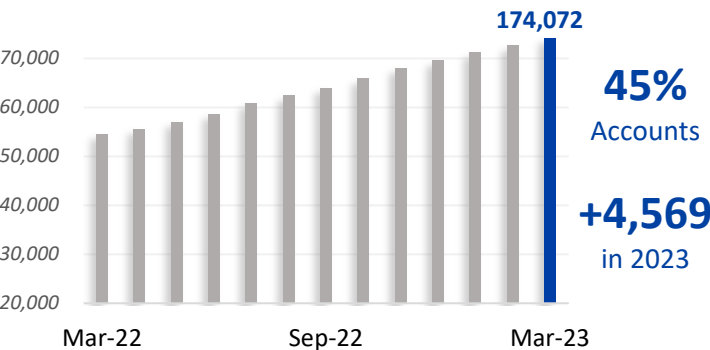


## Contact Types

2022: 376,659 Contacts

Main Contact Types	Mar. Totals	
Service Request	9,068	33%
Billing Inquiry	5,227	19%
Outage	1,757	6%
Payment Arrangement	1,662	6%
Account Update	1,434	5%
Payment	1,358	5%

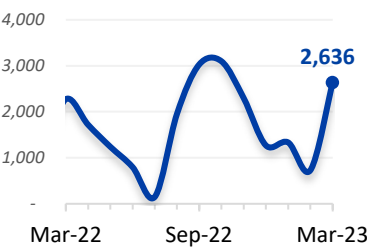
## Paperless Enrollments



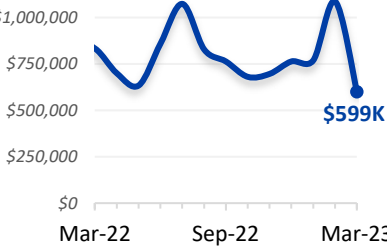
## Collections

0 days with no collection activity.

### Remote Disconnects

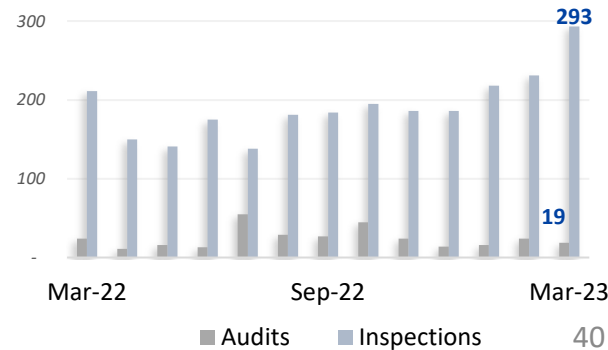


### Aged Balances



## Energy Services

2022 YTD: Audits - 80, Insp. - 524  
2023 YTD: Audits - 59, Insp. - 726





# Facilities

<b>Cedar Park</b>	New fuel tanks have been installed for better emergency preparedness, the project is 100% complete.
<b>Johnson City</b>	Begun development of a master plan for the Haley Rd site, which includes the newly acquired property adjacent to the site.
<b>Junction</b>	Contractor has mobilized and is currently working on fencing and fuel island installation.
<b>Leander Development</b>	Building construction has been completed, with a few minor punch-list items outstanding.
<b>Marble Falls</b>	Finalizing design, resolving encroachments, gathering bids and obtaining city approval for yard renovations.
<b>Oak Hill Fuel Island</b>	Project is out for RFP and permitting process has begun.



# Appendix to March 2023 Financial Presentation to the Board

Randy Kruger | Chief Financial Officer

### 3. Financial Report

# Financial Performance

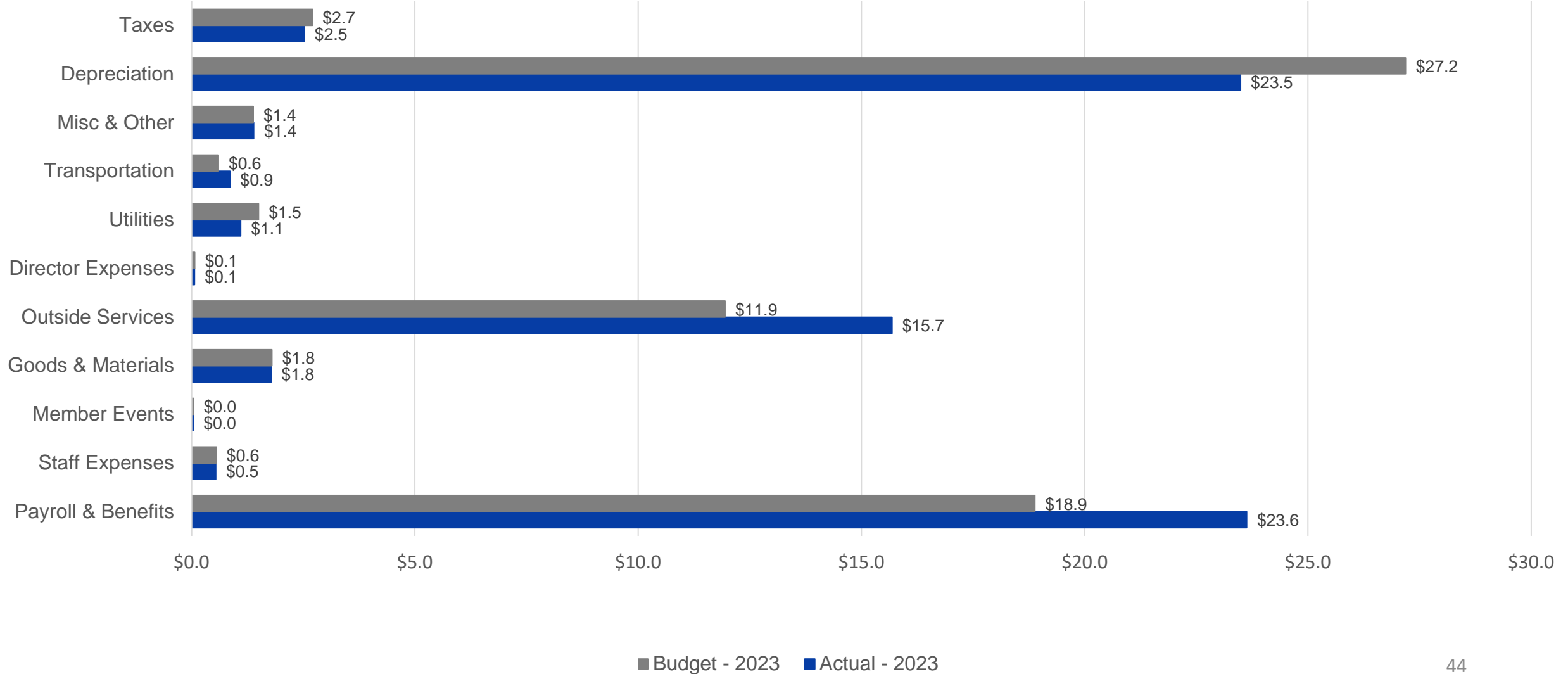
	MTD			YTD			Annual	2022 to 2023 % Change
	Actual	Budget	Prior Year	Actual	Budget	Prior Year	Budget	
<b>Gross Margins</b>	\$ 26,318,650	\$ 25,996,950	\$ 26,992,155	\$ 83,553,576	\$ 82,309,048	\$ 81,137,358	\$ 352,088,225	2.98%
Operating Expenses Ex. Depreciation	12,259,484	14,200,907	11,184,234	47,628,246	39,479,502	33,666,574	166,658,781	41.47%
Depreciation	7,832,591	9,087,261	9,950,450	23,492,210	27,187,555	29,832,380	108,552,698	
Interest Expense	3,620,585	3,720,505	3,698,433	10,883,884	11,259,094	11,039,399	45,173,483	
Other Income	(52,876)	(17,053)	(7,416)	(357,216)	(41,853)	(114,102)	(5,371,928)	
<b>Net Margins</b>	\$ 2,658,866	\$ (994,670)	\$ 2,166,454	\$ 1,906,452	\$ 4,424,750	\$ 6,713,107	\$ 37,075,192	
<b>EBIDA</b>	\$ 14,112,042	\$ 11,813,096	\$ 15,815,337	\$ 36,282,546	\$ 42,871,399	\$ 47,584,886	\$ 190,801,372	-23.75%
Over (Under) Collected Revenues	2,464,734	621,510	(231,178)	583,926	(1,646,679)	(6,180,221)	3,749,120	
<b>EBIDA(X)</b>	\$ 16,576,776	\$ 12,434,606	\$ 15,584,159	\$ 36,866,472	\$ 41,224,720	\$ 41,404,665	\$ 194,550,492	
Total Long-Term Debt							\$ 1,114,322,192	
Debt Service							65,690,519	
Debt Service Coverage Ratio							2.96	
Equity as Percent of Assets							39.6%	
Net Plant in Service							\$ 1,985,228,388	
Capital Improvement Spend							\$ 202,863,100	
Energy Sales kWh	511,504,324	478,105,571	478,769,280	1,521,691,096	1,627,820,534	1,672,394,378	7,500,307,799	-9.01%
Energy Purchases kWh	503,359,853	474,507,462	514,671,109	1,622,080,119	1,740,092,367	1,793,760,353	8,019,713,349	-9.57%
Active Accounts				390,124	392,179	372,048	407,506	4.86%



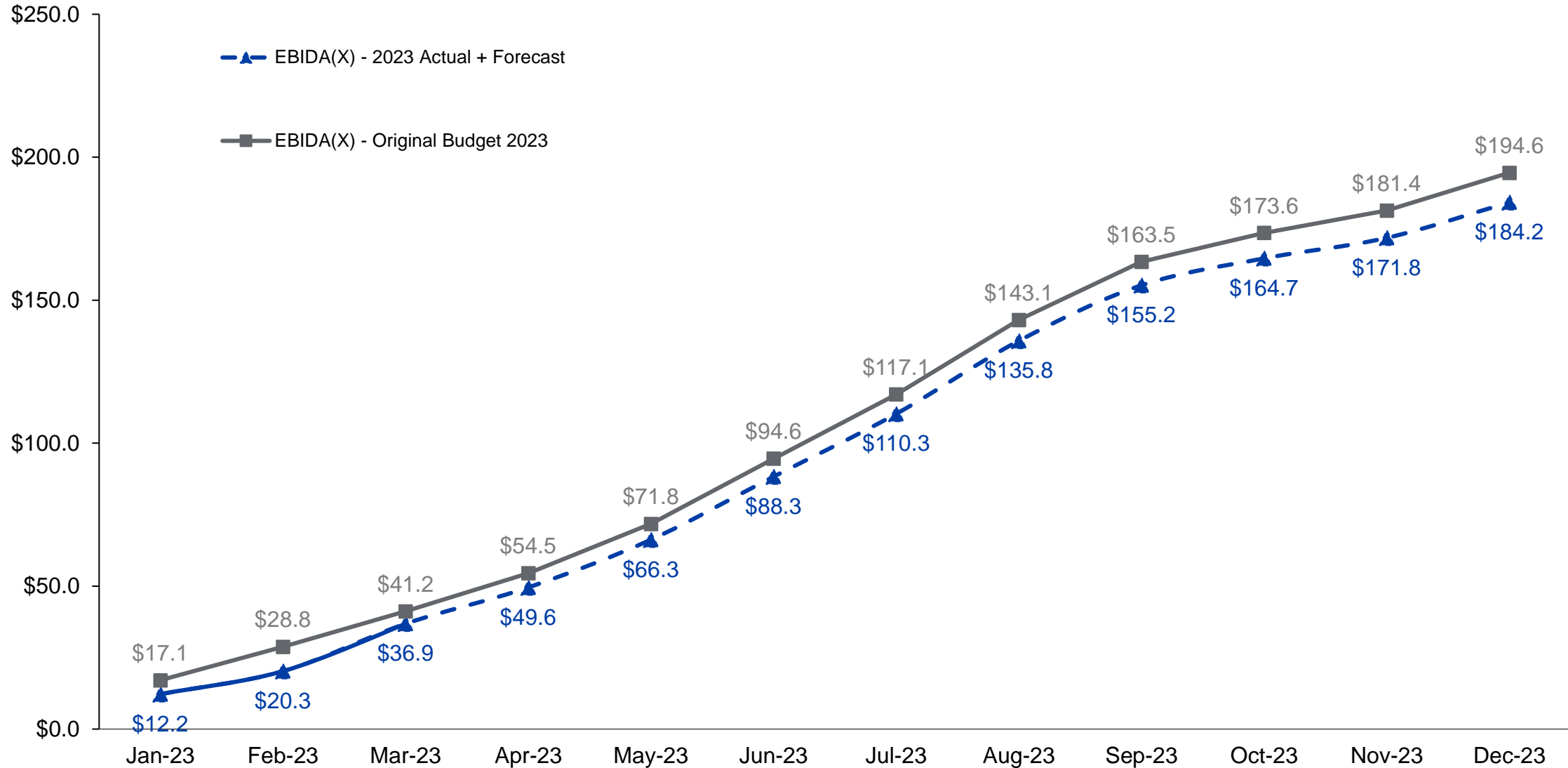
### 3. Financial Report

# Cost of Service (in millions)

## YTD Actuals vs Budget through March 2023



# EBIDA(X) Year to Date (in millions)



### 3. Financial Report

# CIP Spend

Construction Category & Description		YTD Actuals	YTD Budget	Variance (Over)/Under Budget	Annual Budget
<b><u>Distribution</u></b>					
100	New Lines (Line Extensions for new primary, secondary and service lines)	\$ 3,702,380	\$ -	\$ (3,702,380)	\$ -
200	Tie Lines (new construction between existing lines)	1,051,047	2,605,898	1,554,850	9,608,071
300	Conversions or Line Changes	4,735,277	6,834,543	2,099,265	27,514,015
600	Miscellaneous Distribution Equipment	13,895,865	11,562,055	(2,333,810)	51,775,582
700	Other Distribution Items	36,532	130,000	93,468	520,000
<b>Distribution Total</b>		<b>\$ 23,421,101</b>	<b>\$ 21,132,495</b>	<b>\$ (2,288,606)</b>	<b>\$ 89,417,668</b>
<b><u>Substation</u></b>					
400	New Substations, Switching Stations and Meter Points	\$ 1,212,017	\$ 4,136,994	\$ 2,924,977	\$ 20,798,652
500	Substations, Switching Stations and Meter Point changes	4,101,353	7,762,123	3,660,771	24,856,760
<b>Substation Total</b>		<b>\$ 5,313,370</b>	<b>\$ 11,899,117</b>	<b>\$ 6,585,747</b>	<b>\$ 45,655,412</b>
<b><u>Transmission</u></b>					
800	New Transmission Lines	\$ 131,777	\$ 439,925	\$ 308,149	\$ 2,030,593
1000	Line and Station Changes	214,061	3,444,964	3,230,903	19,698,276
<b>Transmission Total</b>		<b>\$ 345,838</b>	<b>\$ 3,884,890</b>	<b>\$ 3,539,052</b>	<b>\$ 21,728,869</b>
<b><u>General Plant</u></b>					
2000	Facilities	\$ 1,846,749	\$ 10,685,426	\$ 8,838,677	\$ 29,346,563
3000	Information Technology	573,840	2,306,286	1,732,446	7,776,588
4000	Tools & Equipment	93,577	171,749	78,172	438,000
5000	Vehicles	1,052,046	2,125,000	1,072,954	8,500,000
<b>Total General Plant</b>		<b>\$ 3,566,211</b>	<b>\$ 15,288,461</b>	<b>\$ 11,722,250</b>	<b>\$ 46,061,151</b>
<b>Accrued WIP</b>		<b>\$ 7,603,338</b>	<b>\$ -</b>	<b>\$ (7,603,338)</b>	<b>\$ -</b>
<b>Total Capital Improvement Plan Spend</b>		<b>\$ 40,249,858</b>	<b>\$ 52,204,963</b>	<b>\$ 11,955,105</b>	<b>\$ 202,863,100</b>



### 3. Financial Report

# CIP Multiyear Projects

Construction Category & Project (\$ in thousands)	Prior Years Spend		YTD Actuals	Project Actuals Post Approval		Project Budget	Remaining Budget			
<b><u>Distribution</u></b>										
JC make-ready - voltage conversion	\$	5,440.1	\$	1,172.1	\$	6,612.2	\$	12,546.0	\$	5,933.8
Fairland Make-ready Voltage Conversion		1,230.1		259.1		1,489.1		7,500.0		6,010.9
Convert Burnet to 24.9KV		2,191.4		200.1		2,391.5		5,000.0		2,608.5
Cranes Mill Conversion		766.6		1,025.1		1,791.6		3,800.0		2,008.4
<b>Distribution Total</b>	<b>\$</b>	<b>9,628.1</b>	<b>\$</b>	<b>2,656.3</b>	<b>\$</b>	<b>12,284.4</b>	<b>\$</b>	<b>28,846.0</b>	<b>\$</b>	<b>16,561.6</b>
<b><u>Substation</u></b>										
Junction - Upgrade T1 to 22.4 MVA	\$	1,069.8	\$	332.9	\$	1,402.7	\$	6,994.3	\$	5,591.6
Hero Way Construct new 46.7 MVA Subst		822.2		1,160.2		1,982.3		8,323.4		6,341.0
Florence Construct new 46.7 MVA Sub		-		2.4		2.4		7,179.7		7,177.2
Yarrington Construct new 46.7 MVA Subst		-		7.6		7.6		8,075.9		8,068.3
RR12-LaCima Construct 46.7 MVA Sub		-		-		-		7,337.6		7,337.6
New Site 2147 - Construct 46.7 MVA Sub		-		-		-		8,641.2		8,641.2
Dripping Springs Upg T1 & T2 to 46.7 MVA		-		1.5		1.5		5,257.1		5,255.6
Seward Junction Install 46.7 MVA Trf		327.8		458.0		785.9		3,289.5		2,503.7
Lehigh Install 46.7 MVA Trf		438.3		342.3		780.6		3,686.2		2,905.6
Pipeline Install 46.7 MVA Trf		-		-		-		3,778.3		3,778.3
Lago Vista Install 46.7 MVA Trf		-		4.7		4.7		8,858.7		8,854.0
SCADA RTU's		624.5		1,541.1		2,165.7		4,326.3		2,160.7
<b>Substation Total</b>	<b>\$</b>	<b>3,282.6</b>	<b>\$</b>	<b>3,850.7</b>	<b>\$</b>	<b>7,133.3</b>	<b>\$</b>	<b>75,748.2</b>	<b>\$</b>	<b>68,614.9</b>
<b><u>Transmission</u></b>										
T323 PF-MF Overhaul	\$	1,181.4	\$	765.6	\$	1,946.9	\$	10,976.6	\$	9,029.7
T327 LA-NL Overhaul		676.2		22.0		698.1		11,005.2		10,307.0
T324 ML-HT – Single Circuit		248.5		107.0		355.5		3,329.2		2,973.7
T380 BD-TV Overhaul		-		2.7		2.7		5,777.7		5,775.0
MF-TP (T315) Storm Hardening		6,533.2		1,010.5		7,543.6		8,525.5		981.9
Wimberley Loop		192.4		1.0		193.4		71,254.7		71,061.3
T623 TP-CV Storm Hardening		223.4		1.7		225.1		11,289.1		11,064.0
T333 LV to NL Overhaul		388.8		1.5		390.3		11,730.5		11,340.3
EMS Hardware Software		2,656.0		214.4		2,870.4		3,441.7		571.3
<b>Transmission Total</b>	<b>\$</b>	<b>12,099.8</b>	<b>\$</b>	<b>2,126.2</b>	<b>\$</b>	<b>14,226.0</b>	<b>\$</b>	<b>137,330.1</b>	<b>\$</b>	<b>123,104.1</b>
<b><u>General Plant</u></b>										
Transmission Control Center	\$	28,326.2	\$	1,480.4	\$	29,806.6	\$	32,500.0	\$	2,693.4
Spring Branch - Warehouse and Shop Build		-		-		-		11,837.0		11,837.0
Marble Falls Additional Property Fence & Improvements		42.4		4.8		47.2		5,025.4		4,978.2
Junction/Warehouse Yard Expansion		80.3		109.8		190.1		13,801.0		13,610.9
Haley Road - Mstr Plan, Fence, Site Dev		-		-		-		8,861.1		8,861.1
Safety Tech Training Cntr Improvements		282.7		-		282.7		5,483.4		5,200.7
<b>Total General Plant</b>	<b>\$</b>	<b>28,731.7</b>	<b>\$</b>	<b>1,594.9</b>	<b>\$</b>	<b>30,326.6</b>	<b>\$</b>	<b>77,507.9</b>	<b>\$</b>	<b>47,181.3</b>



[pec.coop](http://pec.coop)