



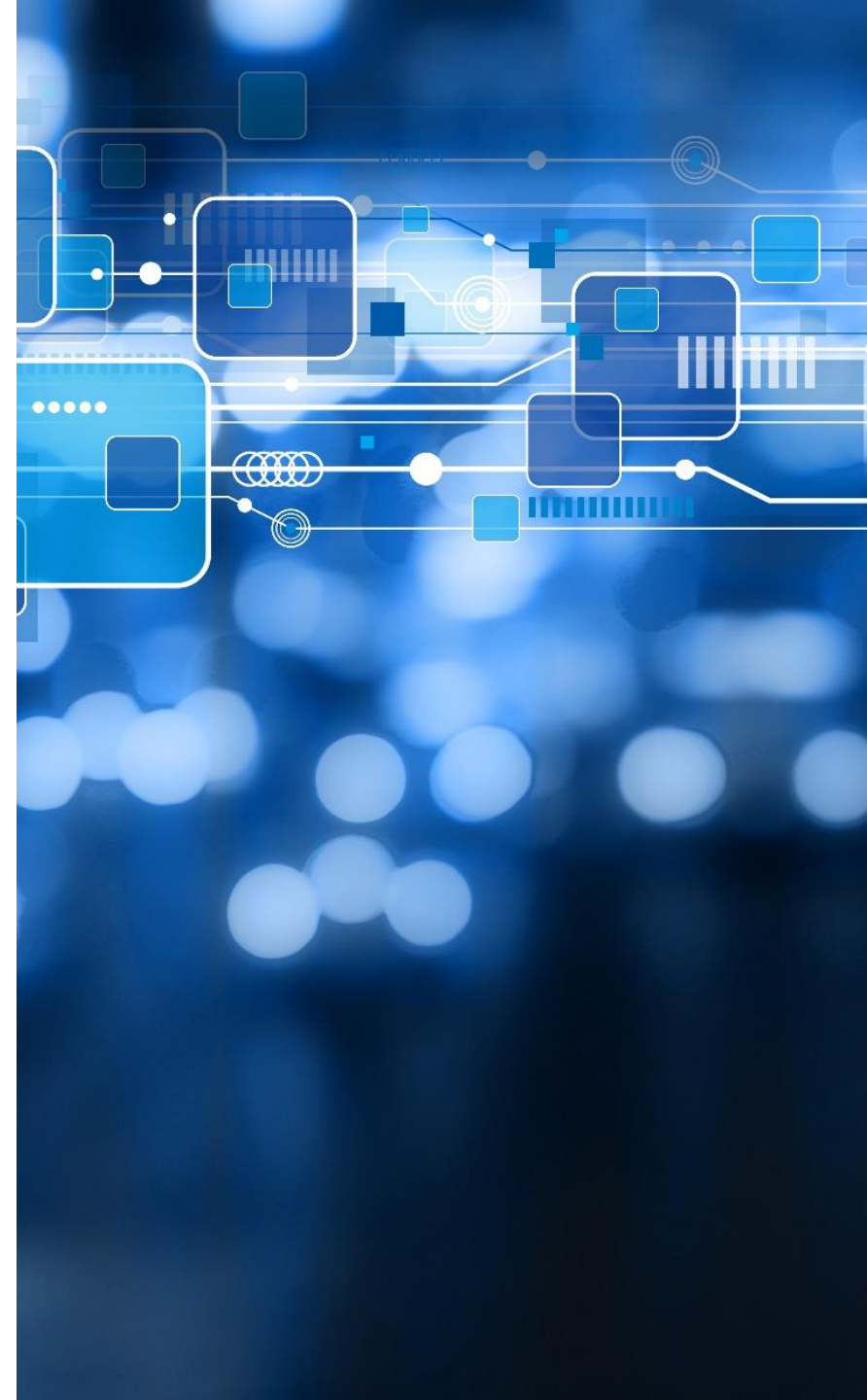
Information Technology

Lawanda Parnell, Chief Information Officer



Agile IT Initiatives

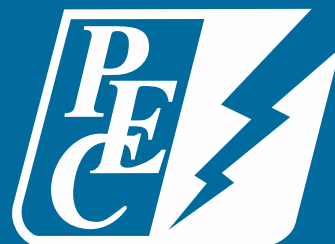
April 13	May 11
Create Employee Event Registration System	Redirect current drive mapping on PEC's Commercial Allowance Calculator
Additions to Operations QLIK Dashboard	Analyze and define EEI data modeling needed to determine calculations for reporting and create data modeling for creation of QLIK Dashboard
Create a Bill Restore Program	Create automatic archival process for bills older than 13 months
Disable Obsolete Outage Communications Online Resources	
Corrections to Cash Management QLIK Dashboards	
Modify TFCC Interface for Outage Calls to evaluate and log Multispeak Responses	
Create Secure FTP – Required for Success of Alliance Program	
Redirect PUC report to new DMS/Trimble server in order to satisfy SAIFI, SAIDI, and CAIDI reporting requirements	



May 2017

- Upgraded mapping solution – Trimble NIS
- Mobile time approval for all supervisors & managers
- Annual meeting registration app update
- SharePoint upgrade kickoff





pec.coop